



GAIN THE ADVANTAGE

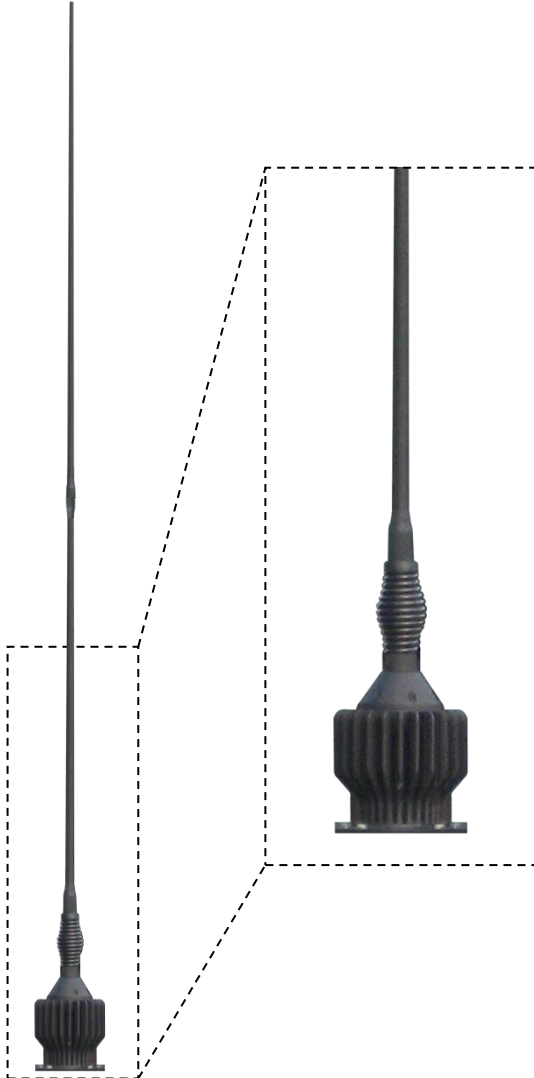
High-Power Wideband VHF Whip

20 – 100 MHz

Product Code: MONO-A0062

VERSION: 2.6

SPECIFICATIONS:



Product code:		
MONO-A0062		Standard whip length
MONO-A0062-01		Low profile version
MONO-A0062-02		Standard whip length with higher VSWR and gain
MONO-A0062-03		Standard whip length, 4.3-10 connector
Electrical:		
Frequency range		20 – 100 MHz
VSWR:		< 2.5:1
MONO-A0062 / -01 / -03		See Figure 1
VSWR:		< 3.5:1
MONO-A0062-02		See Figure 3
Feed power handling		120 W
Gain	MONO-A0062 / -03	> -12 dBi. See Figure 2
	MONO-A0062-01	Deteriorates app. by 3 dB at low frequency compared to the standard MONO-A0062 gain
	MONO-A0062-02	> -8 dBi, see Figure 4
Elevation 3 dB beamwidth		60° (± 10°)
Nominal input impedance		50 Ω
Polarisation		Vertical
Connector	MONO-A0062 / -01 / -02	N-type female
	MONO-A0062-03	4.3-10 female
Groundplane requirements		Groundplane dependent, Minimum 2000 mm x 2000 mm recommended
Mechanical:		
Length	MONO-A0062 / -02 / -03	2340 mm
	MONO-A0062-01	1605 mm
Base diameter		135 mm
Weight		3.5 kg
Mounting base		NATO flange 4 and 6 holes
Environmental: designed to meet the following specifications		
Wind loading		160 km/h
Temperature (operational)		- 30 °C to + 65 °C (no icing)
Shock		20 G at 10 msec
Thermal shock		- 20 °C to +70 °C: 10 cycles
Water ingress rating		IP65 (NEMA 4X)

FEATURES:

- Wide frequency coverage (20 to 100 MHz)
- High-power, 120 W at 100% duty cycle
- Excellent VSWR
- Omni-directional azimuth pattern
- Rugged and hard-wearing
- Suited to low-profile applications

APPLICATIONS:

- Improvised explosive device (IED) suppression
- Communications interception

PRODUCT DESCRIPTION:

The antenna has an excellent radiation pattern and a consistently low VSWR across the entire frequency band. It can handle full rated power continuously at all frequencies, making it ideal for all 100% duty-cycle applications. The insulated radiator is robust, hard-wearing and impervious to fuel, oil and hydraulic fluid.

The MONO-A0062-01 is a low profile version of MONO-A0062 and is ideal for certain vehicles; however, it suffers from gain degradation at low frequency.

The MONO-A0062-02 has been optimized for higher gain at a cost of an increased maximum VSWR.



AUTHORIZED USA DISTRIBUTION BY:

Cyntony Corporation
195 Follen Road
Lexington, Massachusetts
sales@cyntony.com
781-430-0675



GAIN THE ADVANTAGE

High-Power Wideband VHF Whip

20 – 100 MHz

Product Code: MONO-A0062

VERSION: 2.6

MONO-A0062 graphs*:

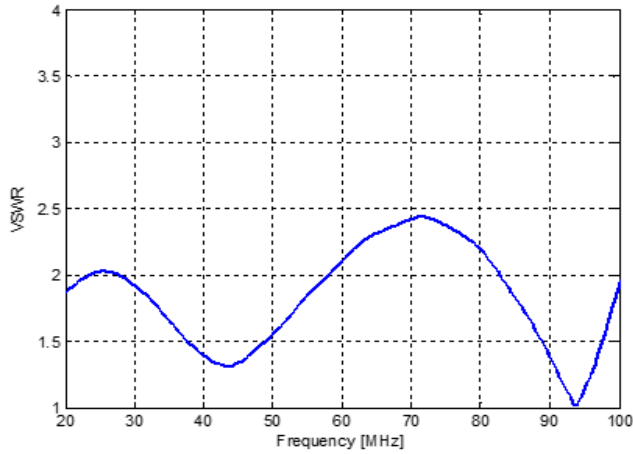


Figure 1: VSWR

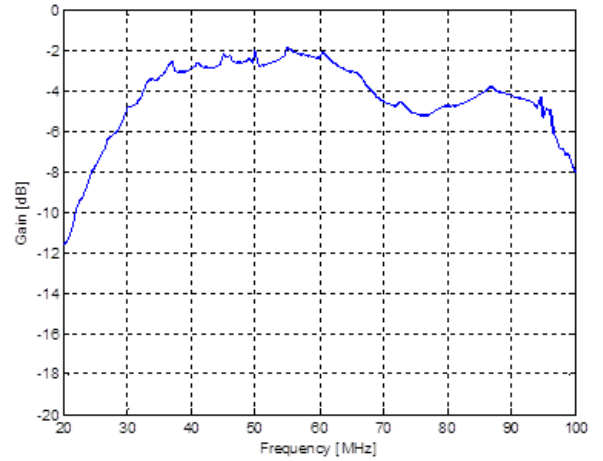


Figure 2: gain

* Measured on a 5000 mm x 5000 mm groundplane.

MONO-A0062-02 graphs:

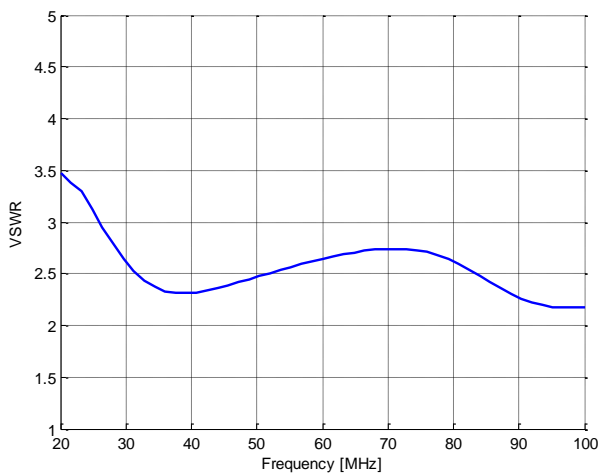


Figure 3: VSWR

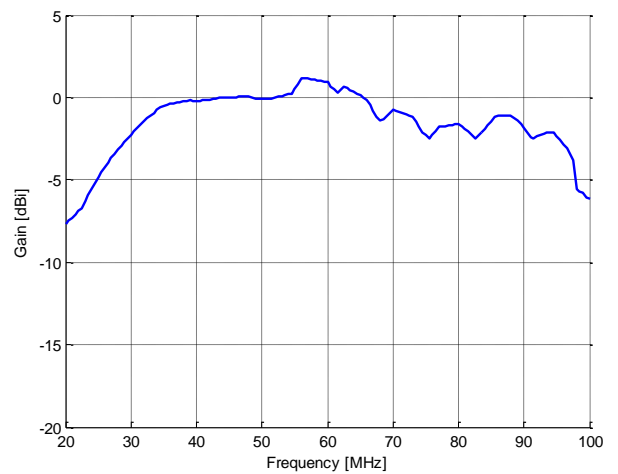


Figure 4: gain



AUTHORIZED USA DISTRIBUTION BY:

Cyntony Corporation
195 Follen Road
Lexington, Massachusetts
sales@cyntony.com
781-430-0675



GAIN THE ADVANTAGE

High-Power Wideband VHF Whip

20 – 100 MHz

Product Code: MONO-A0062

VERSION: 2.6

Elevation:

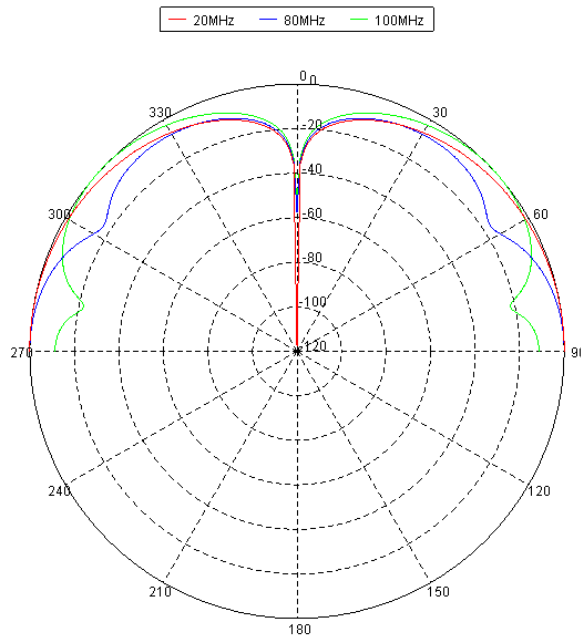


Figure 5: elevation pattern



**AUTHORIZED USA
DISTRIBUTION BY:**

Cyntony Corporation
195 Follen Road
Lexington, Massachusetts
sales@cyntony.com
781-430-0675



**GAIN THE
ADVANTAGE**