

AD-25/CW-3512

The antenna AD-25/CW-3512 is a wideband monopole whip antenna, primarily intended for use with manpack radios on VHF/UHF frequency range from 30 to 512 MHz. The antenna electrical performances are optimized for use on manportable radio units and other RF devices with relatively small ground plane.

The antenna is composed of radiating part made of bendable tape radiator ensuring high flexibility and roughness. Below the radiator is the goose-neck which enables vertical position of the antenna regardless of the position of the radio. Antenna matching unit is placed above the connector which is designed with inner part intended for electrical connection between the radio unit, middle part which is intended to hold the antenna in position and outer part - connector nut - which is intended to fasten the antenna firmly on the radio connector. Various connector threads are available on request.

The antenna is in black colour.

	AD-25/CW-3512-H Rev.B	AD-25/CW-3512-N Rev.B	AD-25/CW-3512-S Rev.B	AD-25/CW-3512-HP
Frequency range (MHz)	30 - 512	30 - 512	30 - 512	25 - 512
Impedance (ohm)	50	50	50	50
VSWR	< 3.5	< 3.5	< 3.5	< 3.5
Polarization	VER.	VER.	VER.	VER.
Maximum power (W)	20	20	20	50
Height (mm)	1242	1255	1250	1455
Max. diameter (mm)	30	30	30	42
Weight (g)	410	410	410	750
Connector	TNC male	N male	SINCGARS	N male
Temp. range				
- operation (°C)	-40.....+55	-40.....+55	-40.....+55	-40.....+55
- storage (°C)	-40.....+70	-40.....+70	-40.....+70	-40.....+70



N connector



**SINCGARS
connector**

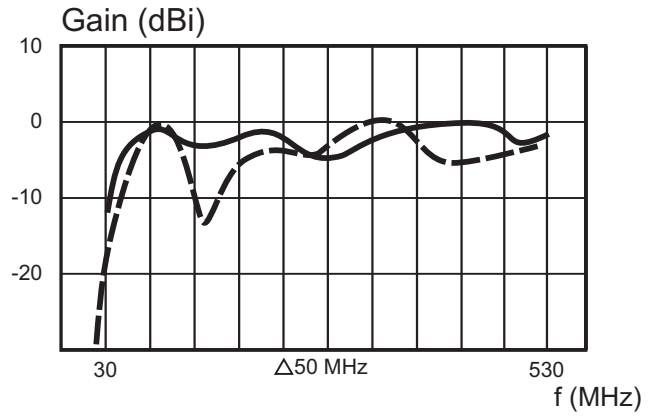
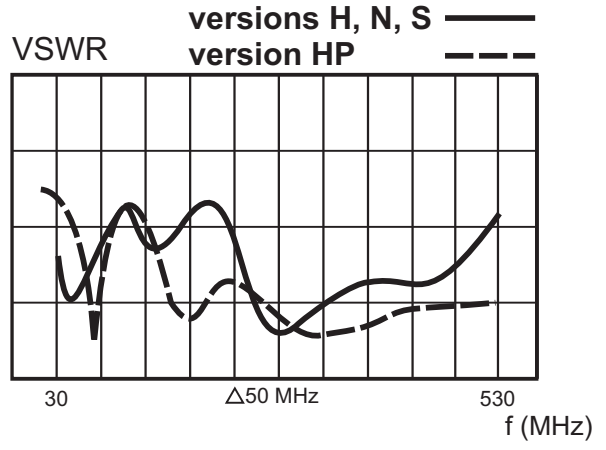
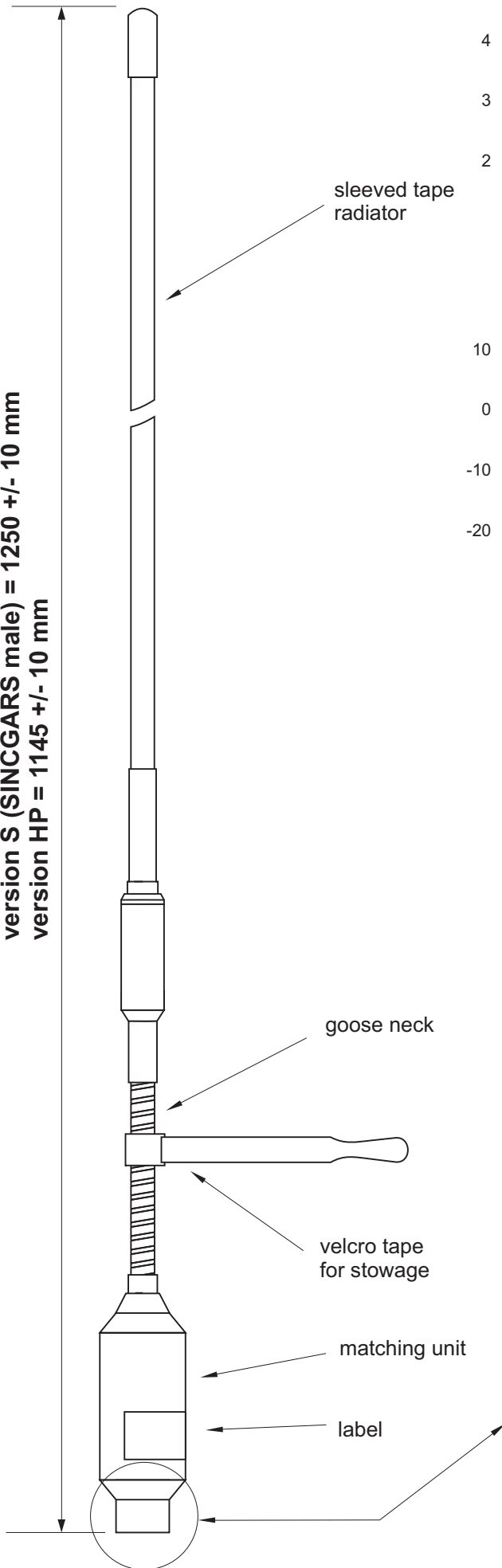


AD-25/CW-3512

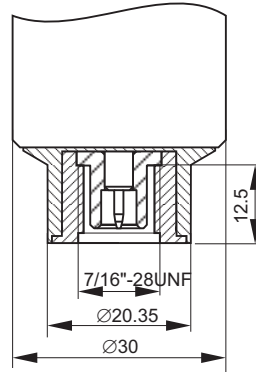


AD-25/CW-3512-HP

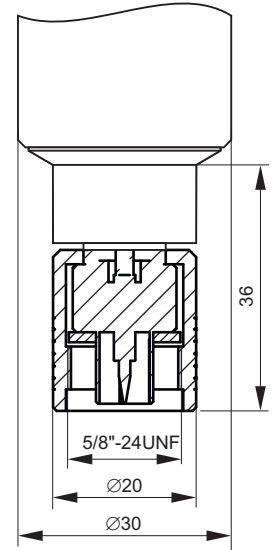
version H (TNC male) = 1242 +/- 10 mm
 version N (N male) = 1255 +/- 10 mm
 version S (SINGGARS male) = 1250 +/- 10 mm
 version HP = 1145 +/- 10 mm



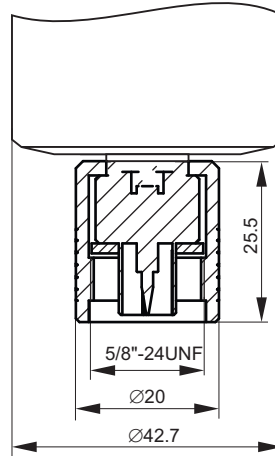
AD-25/CW-3512-H (connector detail)



AD-25/CW-3512-N (connector detail)



AD-25/CW-3512-HP (connector detail)



AD-25/CW-3512-S (connector detail)

