

Epson Edge Print

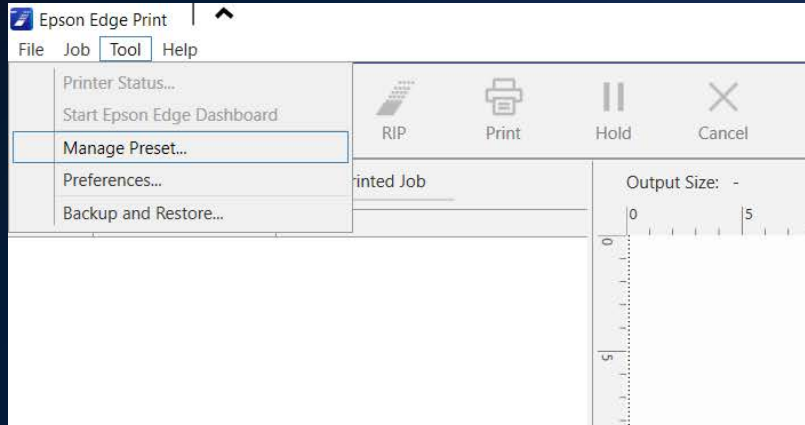
How to use custom media profiles

Media Profiling Workflow Steps

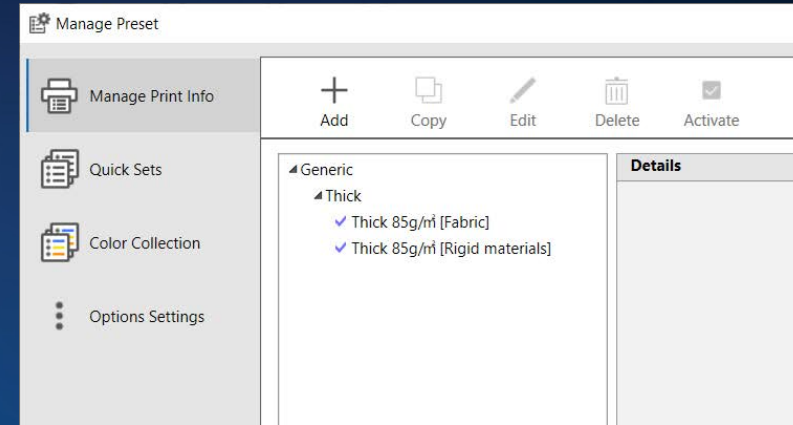
Step	Epson Edge Print	Profiling Software
1	Create a new Media type	
2	Define the print settings	
3		Generate a profile chart
4	Print the profile chart with color management disabled	
5		Measure chart and create ICC profile
6	Import the media ICC profile	
7 - Optional	Create a Quick Set	

This information contained in this document is provided as-is, and is subject to change.

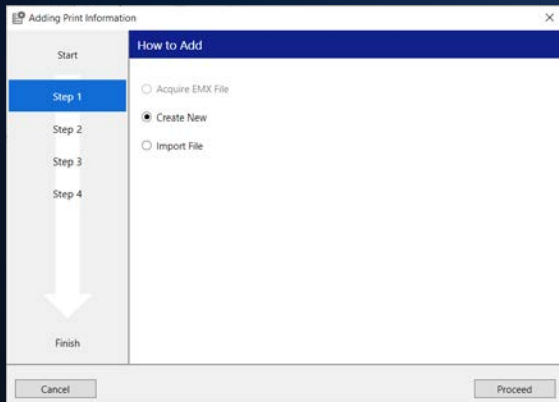
Step 1 – Create a New Media Type



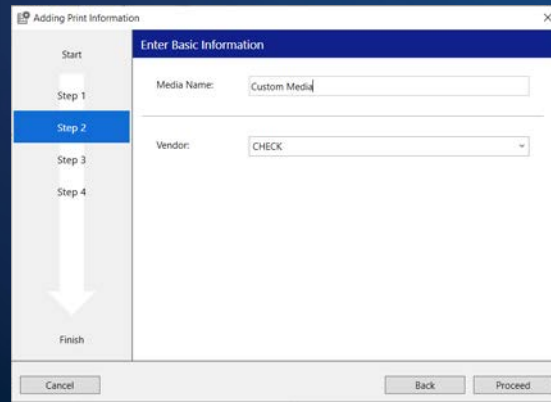
A. Open Epson Edge Print – Click “Tool” and then “Manage Preset...”



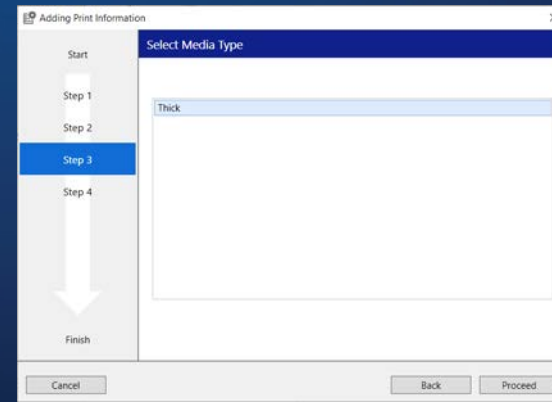
B. In the Manage Print Info section, Click the “+ Add” button



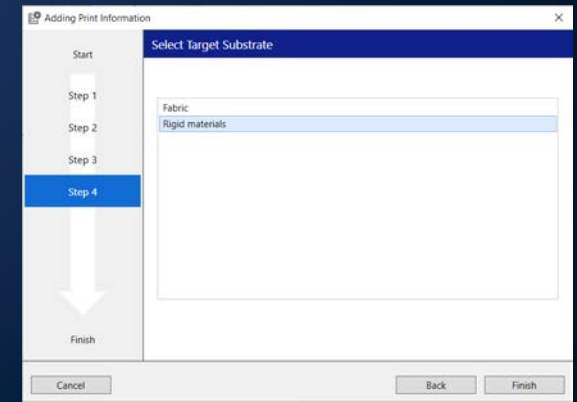
C. Click “Create New” and then click “Proceed” Button



D. Enter a Media Name and Vendor and then click “Proceed” button

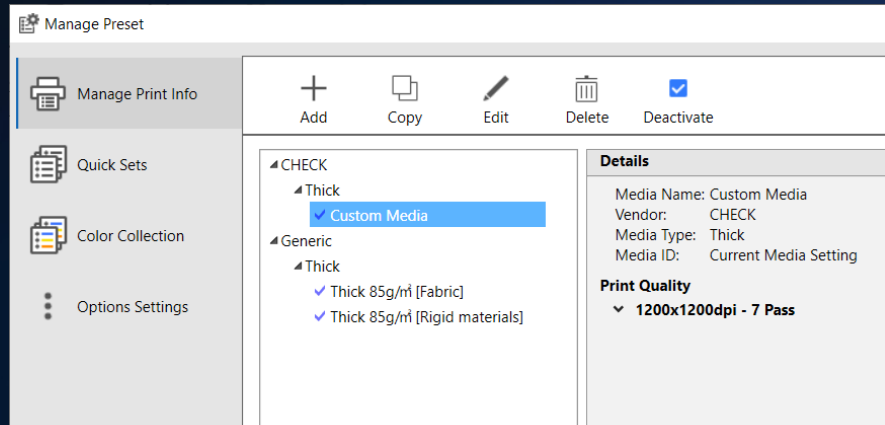


E. Select a base media type and then click “Proceed” button

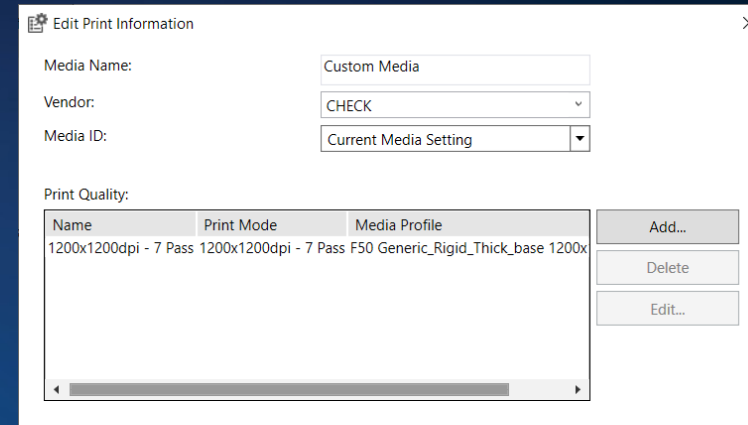


F. Select the target substrate application and then click “Proceed” button

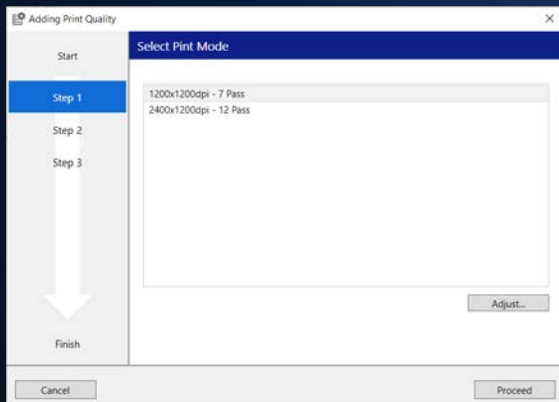
Step 2 – Define Print Settings



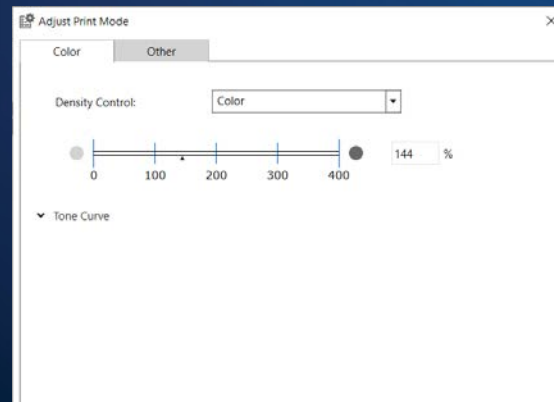
A. Click on the newly created Media type and then click “Edit”



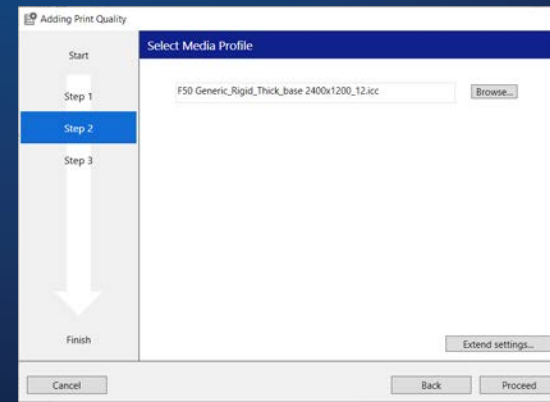
B. Click Add create a new print mode or Edit to modify an existing mode.



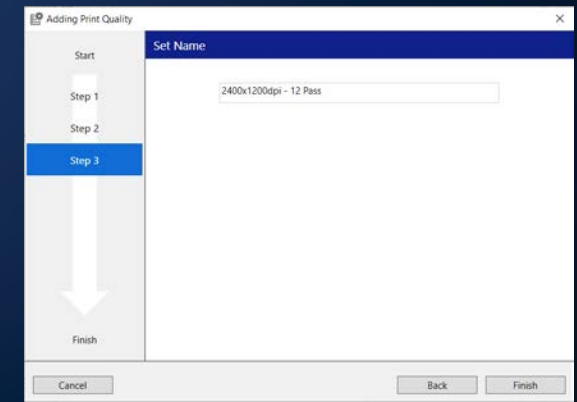
C. Select the desired print mode. Click “Adjust” to modify the ink limit factor



D. Make desired adjustments to the ink density and click “OK” and “Proceed”



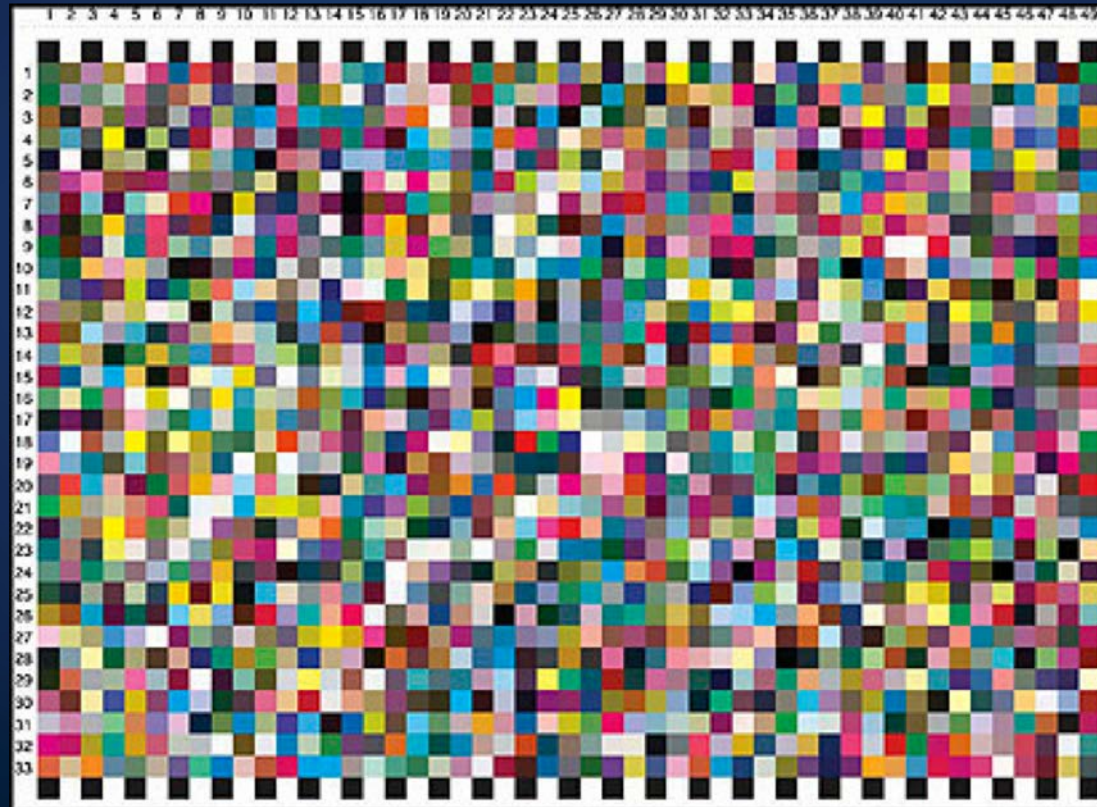
E. Skip this step and click “Proceed”



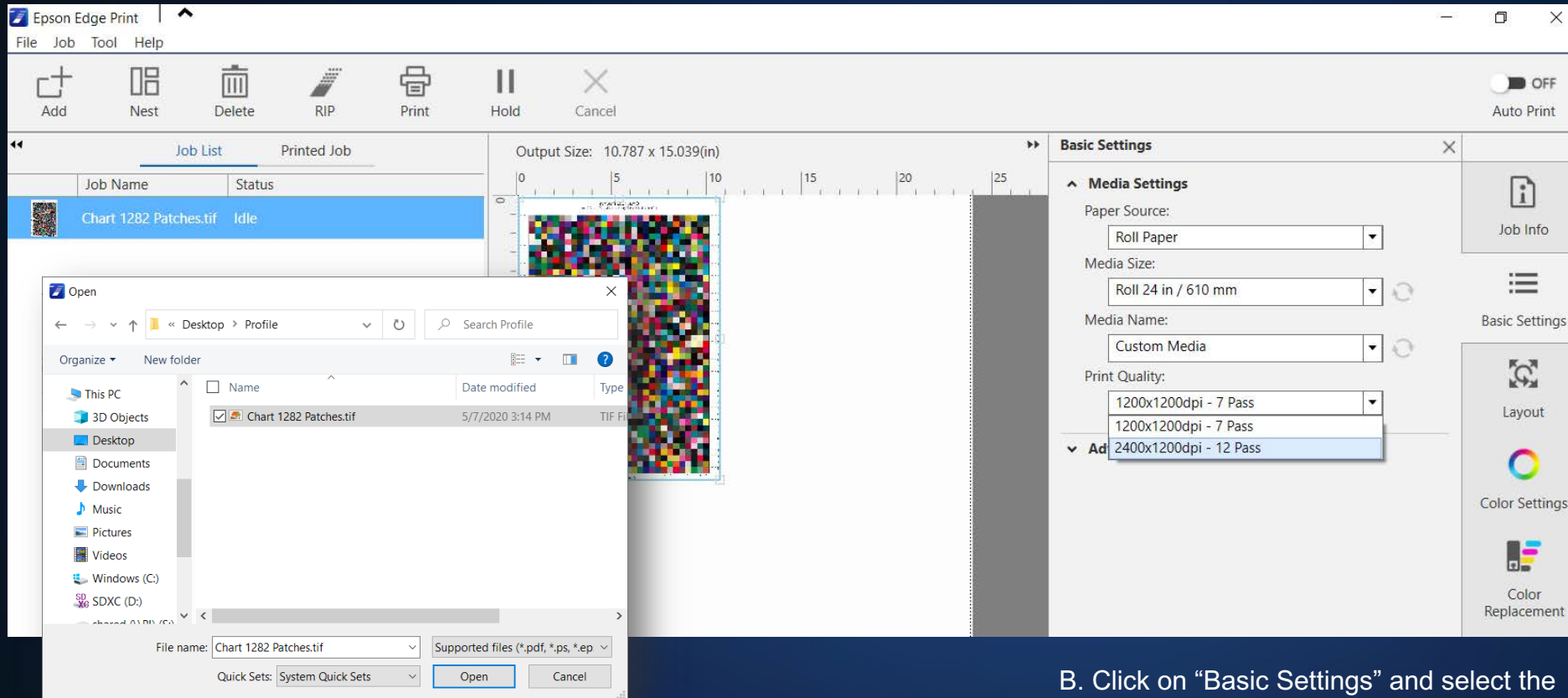
F. Set the print mode name if desired and then click “Proceed” button and “OK”

Step 3 – Generate Profile Chart

Use your color profiling software to generate a CMYK profile chart TIFF image.

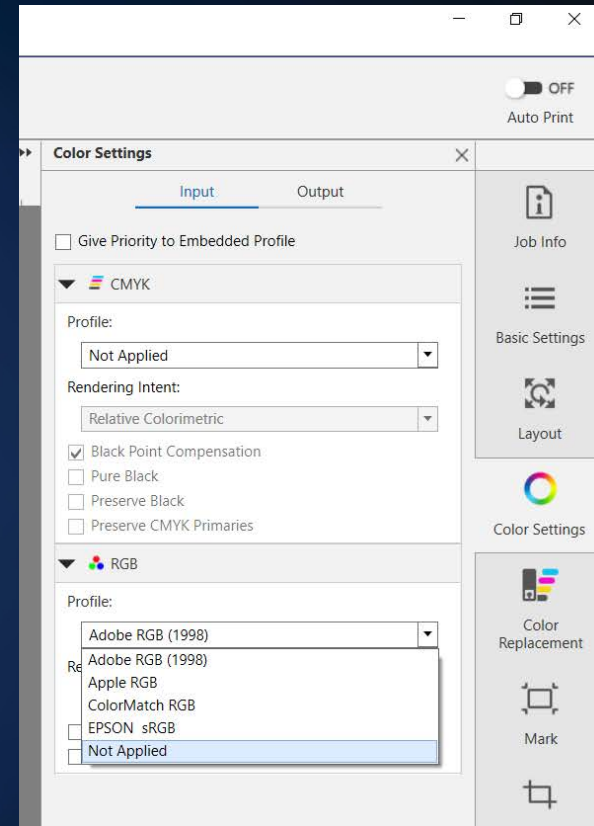


Step 4 – Print Profile Chart



A. Click on “+ Add” button and select the profile chart image. Click “Open” to add the print queue.

B. Click on “Basic Settings” and select the newly created media type and print mode.



C. Click on “Color Settings” tab and set the Input Profiles to “Not Applied”. This will disable color management.

D. Click “Print” after the above settings have been adjusted

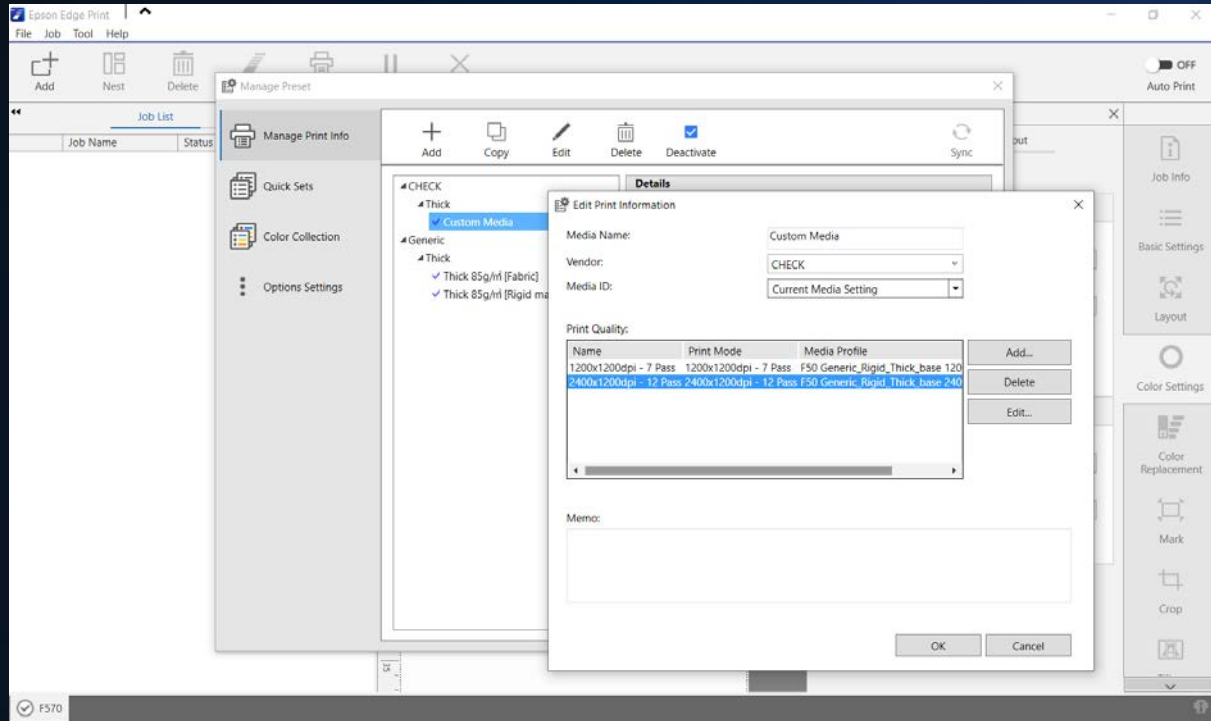
Step 5 – Measure Chart and Create ICC Profile

Sublimate the printed transfer paper to the substrate using the intended heat transfer parameters.

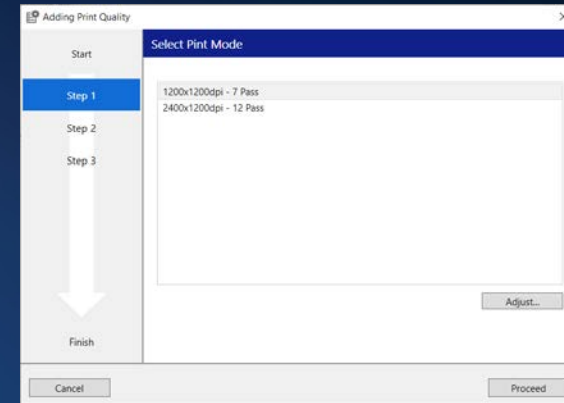
Use your color profiling software and device to measure the sublimated color chart and generate an ICC profile



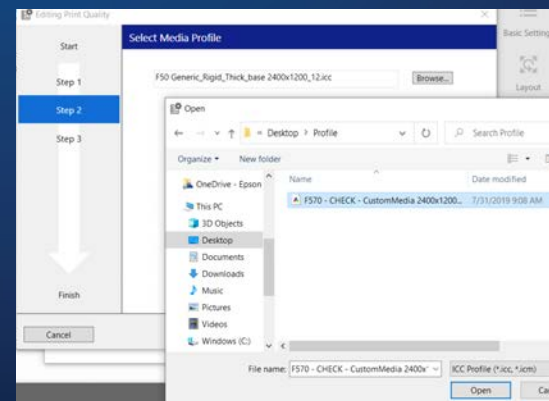
Step 6 – Import Media ICC Profile



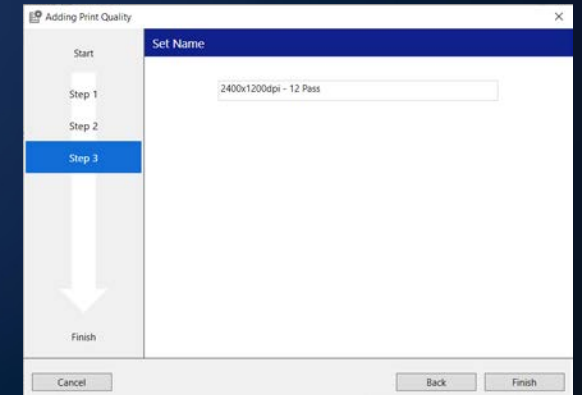
A. Click “Tool” from the top menu bar and then “Manage Preset...” In the “Manage Print Info” section, click on the newly created media and click “Edit” button. Select the Print Quality mode and then click “Edit”.



B. Select the desired print mode, and then click “Proceed”

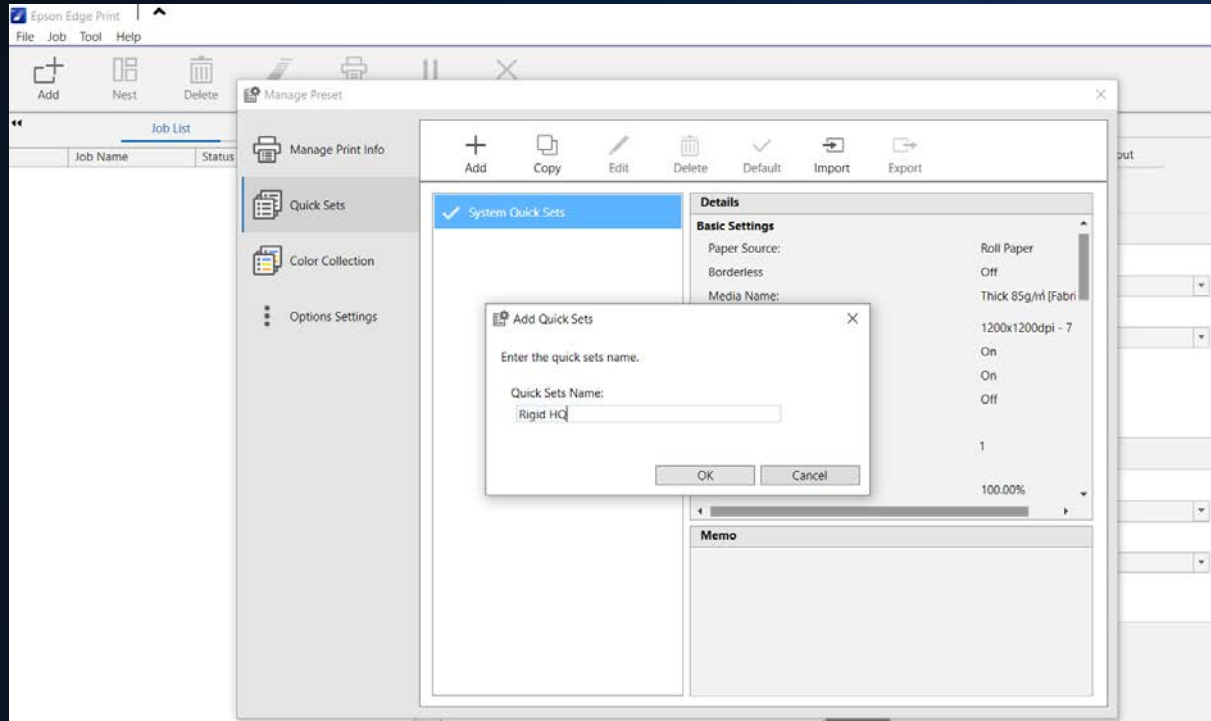


C. Click “Browse” and select the new ICC Profile file. Click “Open” and then “Proceed”

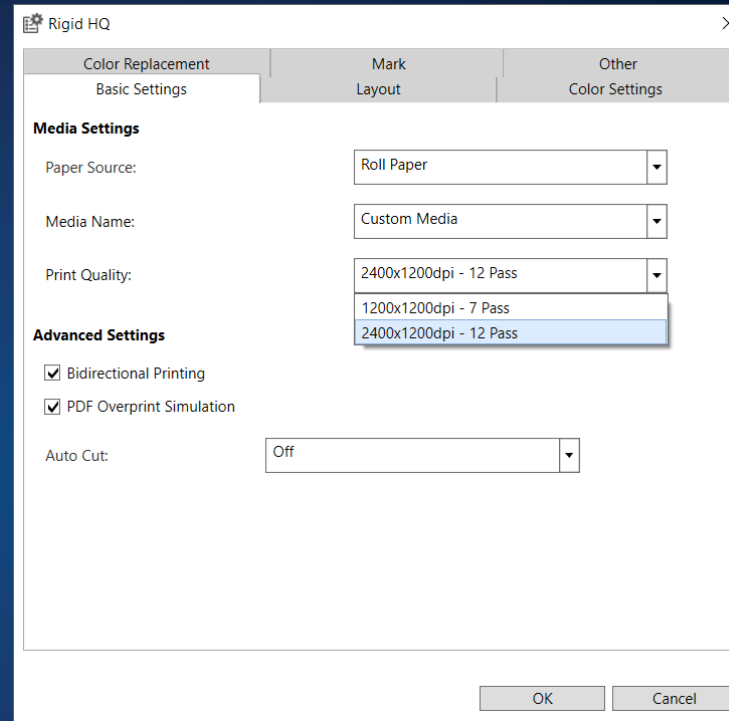


D. Set the print mode name if desired and then click “Proceed” button and “OK”

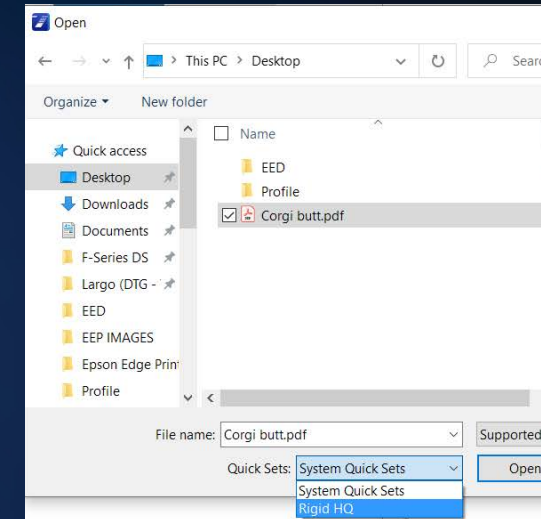
Step 7 – Create Quick Set (optional)



A. Click “Tool” from the top menu bar and then “Manage Preset...” In the “Quick Sets” section, click on the “+ Add” button, enter an appropriate name and then click “OK”



B. In the “Basic Settings” tab select the newly created media and print quality mode. Make any other adjustments desired and click “OK” to save.



C. When adding jobs to Epson Edge, select a quick set to apply the newly created settings.