

# EXP+ Empower Triboo

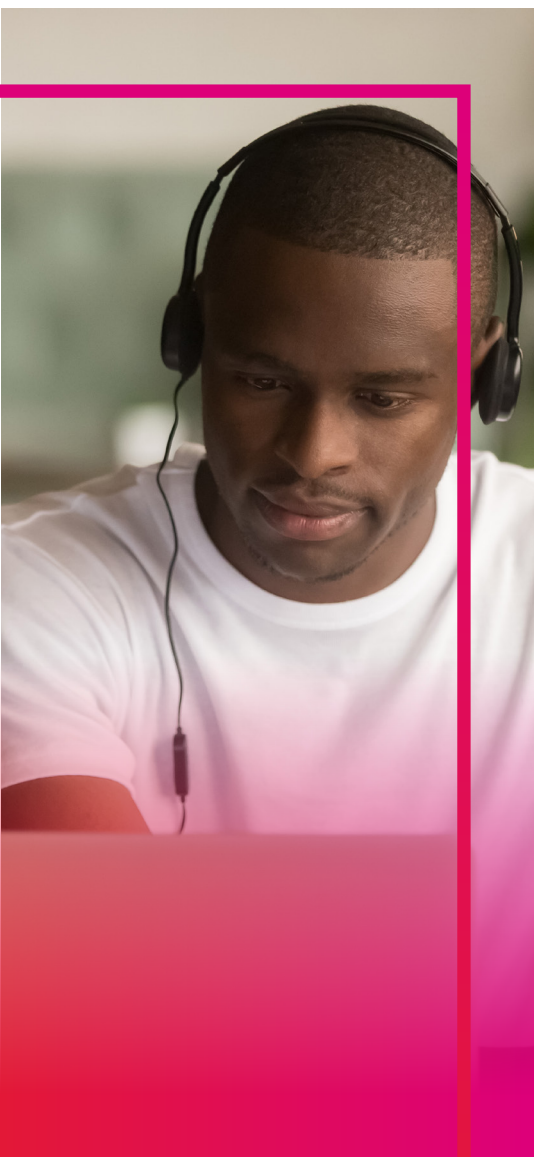


*An innovative learning experience solution.*

## Powerful, Personalized Training

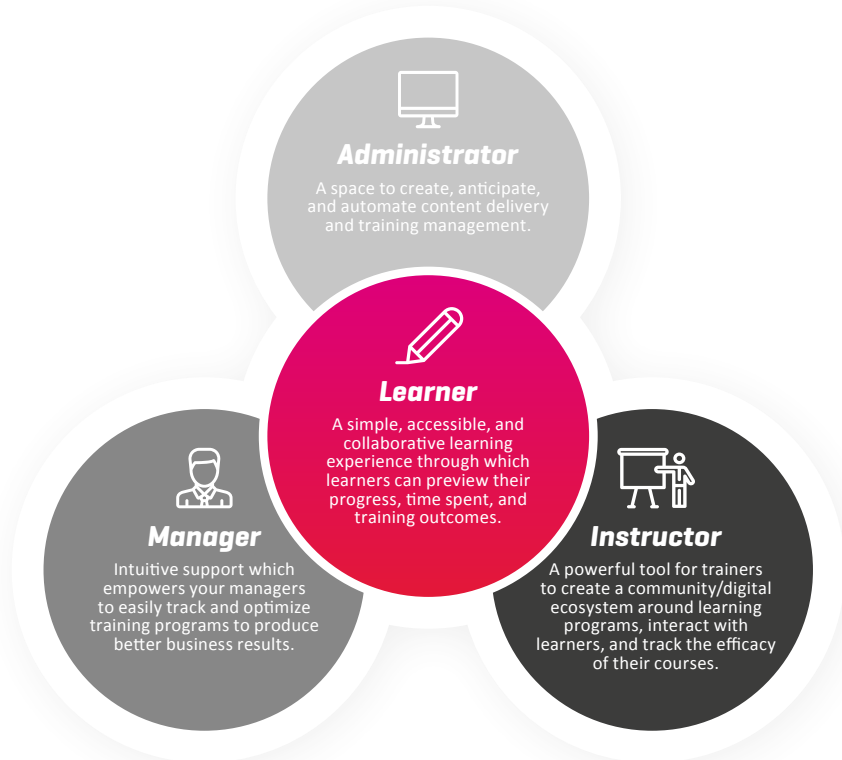
Reflective of your needs and easy to deliver on expectations, our innovative learning experience solution, Triboo, simplifies the acquisition of new skills with accessibility, interactivity and ease of use for your learners. Triboo is equally capable of supporting instructor-led and virtual instructor-led courses and reinforces collaboration, enables social learning through chatrooms and discussion forums and works seamlessly on different devices with its multimedia content.

- **Performance**  
Accelerated learning driven by a modern learning experience and delivered through blended learning.
- **Flexibility**  
An accessible and intuitive interface allows learners to easily access online components using their preferred digital devices.
- **Cost Effective**  
Low operational costs driven by training process automation and dynamic learning process.
- **Engagement**  
Collaborative and gamified content for enhanced user immersive experience.
- **Easy Deployment**  
An easy-to-use learning experience solution. The integrated studio lets you drag-and-drop content to build your courses.
- **All in One**  
An all-in-one solution that allows you to meet all of your learning business needs.



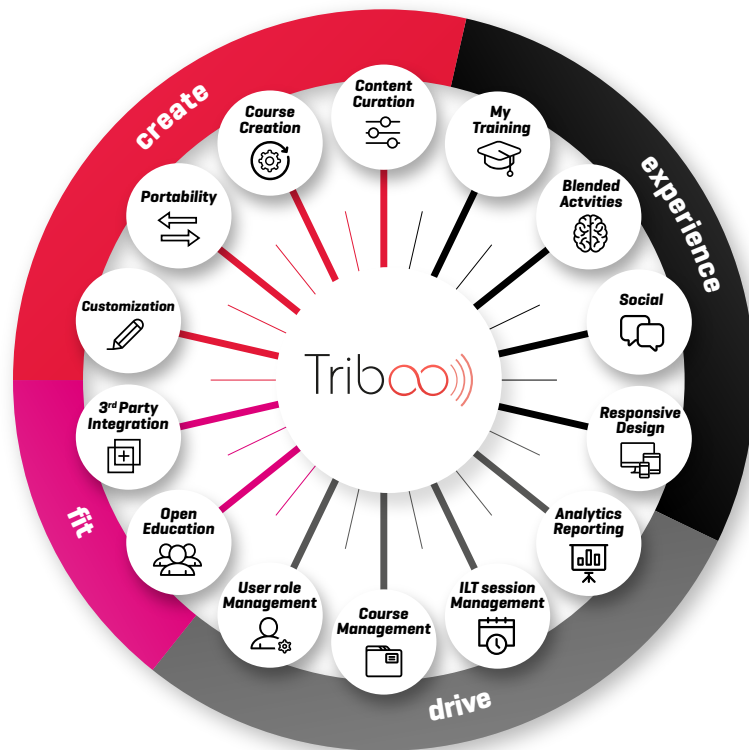
## Designed for User Needs

Triboo is structured around four main user roles; advanced features are provided for each specific user.



## One Solution, Endless Possibilities

Triboo offers a wide range of functionalities supporting the creation and delivery of state-of-the-art training programs that offer a unique and meaningful learning experiences.



**Sitel Group**  
600 Brickell Ave,  
Miami, FL 33131, USA  
[sitel.com](http://sitel.com)

@SiteL\_WorldWide  
 @sitel

