

Easy Drain®  
by ess

## Multi Wall

Easy Drain Multi Wall, the worlds most multifunctional linear shower drain, has various design grates and almost limitless application possibilities. The ABS trap body can be shortened to any height and is supplied with three water seals. If required, another type of Multi trap body can be ordered separately.

### FEATURES

- Certified - EN 1253
- Grate - Height adjustable grate
- Siphon - Easy to clean
- Supplied as - Complete set
- Available lenghts - 800 - 1200 mm



#### Manufacturer

Easy Sanitary Solutions  
Nijverheidsstraat 60 | 7575 BK Oldenzaal | The Netherlands  
T. +31 (0)541 200 800 | F. +31 (0)541 200 899  
info@esspost.com | www.easydrain.com

#### Contact

Easy Sanitary Solutions  
Nijverheidsstraat 60 | 7575 BK Oldenzaal | The Netherlands  
T. +31 (0)541 200 800 | F. +31 (0)541 200 899  
sales@esspost.com | www.easydrain.com

## GENERAL

|               |                              |
|---------------|------------------------------|
| Serie         | Multi Wall                   |
| Name          | Multi Wall                   |
| Model         | Linear shower drain          |
| Length (mm)   | 800, 900, 1000, 1100, 1200   |
| Product type  | Complete                     |
| Application   | New construction, Renovation |
| Certification | EN 1253, ETAG-022, DIN 18534 |

## INSTALLATION

|   |   |
|---|---|
| Substrate                                   | Concrete / Sand Cement, Wooden floors, Lewis sheets |
| Floor finish                                | Tiles / Mosaic, Glass Mosaic, Thin tiles            |
| Height adjustable feet                      | Included  |
| Installation option                         | Wall  |
| Outlet                                      | Horizontal (Vertical outlet optional)               |
| Connection (mm)                             | 50 (Global) / 56 (UK)                               |
| Min. installation depth (mm) (built-in set) | 59  |
| Min. installation depth (mm) (incl. grate)  | 79  |

## DRAINAGE

|   |      |
|---|------|
| Max. drainage capacity entrance (l/min) | N.A. |
| Max. drainage capacity wall (l/min)     | 29   |
| Max. drainage capacity (l/min)          | 29   |

## BUILT-IN SET

|                                |  |
|--------------------------------|--|
| Pre-assembled sealing membrane | Excluded   |
| Siphon features                | Cleanable, Pivotal & adjustable, Height adjustable |
| Water seal height (mm)         | 30 / 35 / 50                                       |
| Outlet                         | Horizontal (Vertical outlet optional)              |
| Material siphon                | ABS  |

## DESIGN

|                         |                         |
|-------------------------|-------------------------|
| Grate finish            | Brushed stainless steel |
| Grate pattern           | Excenter                |
| Grate width (mm)        | 98                      |
| Grate tile insert (mm)  | N.A.                    |
| Adjustable grate        | Yes                     |
| Frame type              | N.A.                    |
| TAF Frame material      | N.A.                    |
| Design frame finish     | N.A.                    |
| Frame width (mm)        | N.A.                    |
| Wheelchair accessible   | Yes                     |
| Extension set available | No                      |



### Manufacturer

Easy Sanitary Solutions  
 Nijverheidsstraat 60 | 7575 BK Oldenzaal | The Netherlands  
 T. +31 (0)541 200 800 | F. +31 (0)541 200 899  
 info@esspost.com | www.easydrain.com

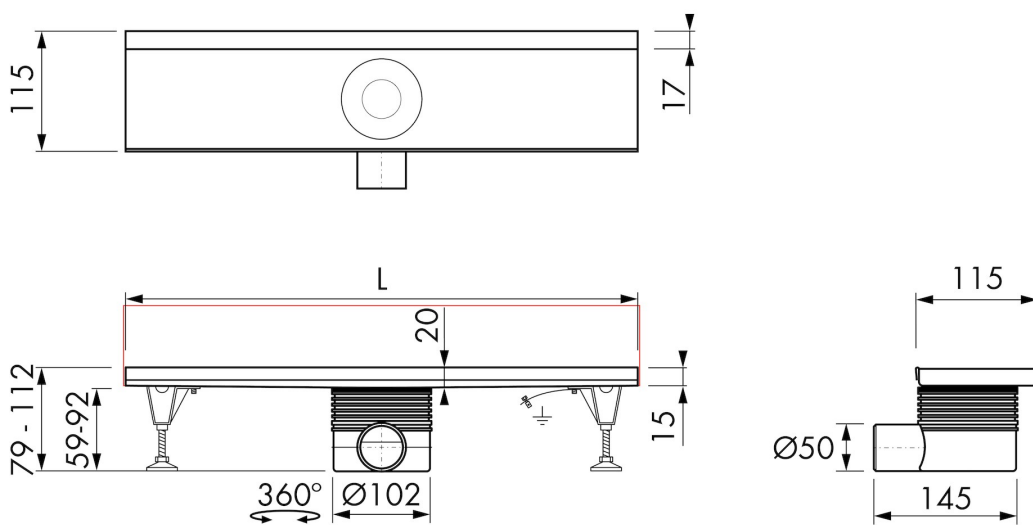
### Contact

Easy Sanitary Solutions  
 Nijverheidsstraat 60 | 7575 BK Oldenzaal | The Netherlands  
 T. +31 (0)541 200 800 | F. +31 (0)541 200 899  
 sales@esspost.com | www.easydrain.com

## ARTICLE CODE

|         |                     |  |  |
|---------|---------------------|--|--|
| 800 mm  | EDE800 / EDMWI800   |  |  |
| 900 mm  | EDE900 / EDMWI900   |  |  |
| 1000 mm | EDE1000 / EDMWI1000 |  |  |
| 1100 mm | EDE1100 / EDMWI1100 |  |  |
| 1200 mm | EDE1200 / EDMWI1200 |  |  |
|         |                     |  |  |

## TECHNICAL DRAWINGS



### Manufacturer

Easy Sanitary Solutions  
 Nijverheidsstraat 60 | 7575 BK Oldenzaal | The Netherlands  
 T. +31 (0)541 200 800 | F. +31 (0)541 200 899  
 info@esspost.com | www.easydrain.com

### Contact

Easy Sanitary Solutions  
 Nijverheidsstraat 60 | 7575 BK Oldenzaal | The Netherlands  
 T. +31 (0)541 200 800 | F. +31 (0)541 200 899  
 sales@esspost.com | www.easydrain.com