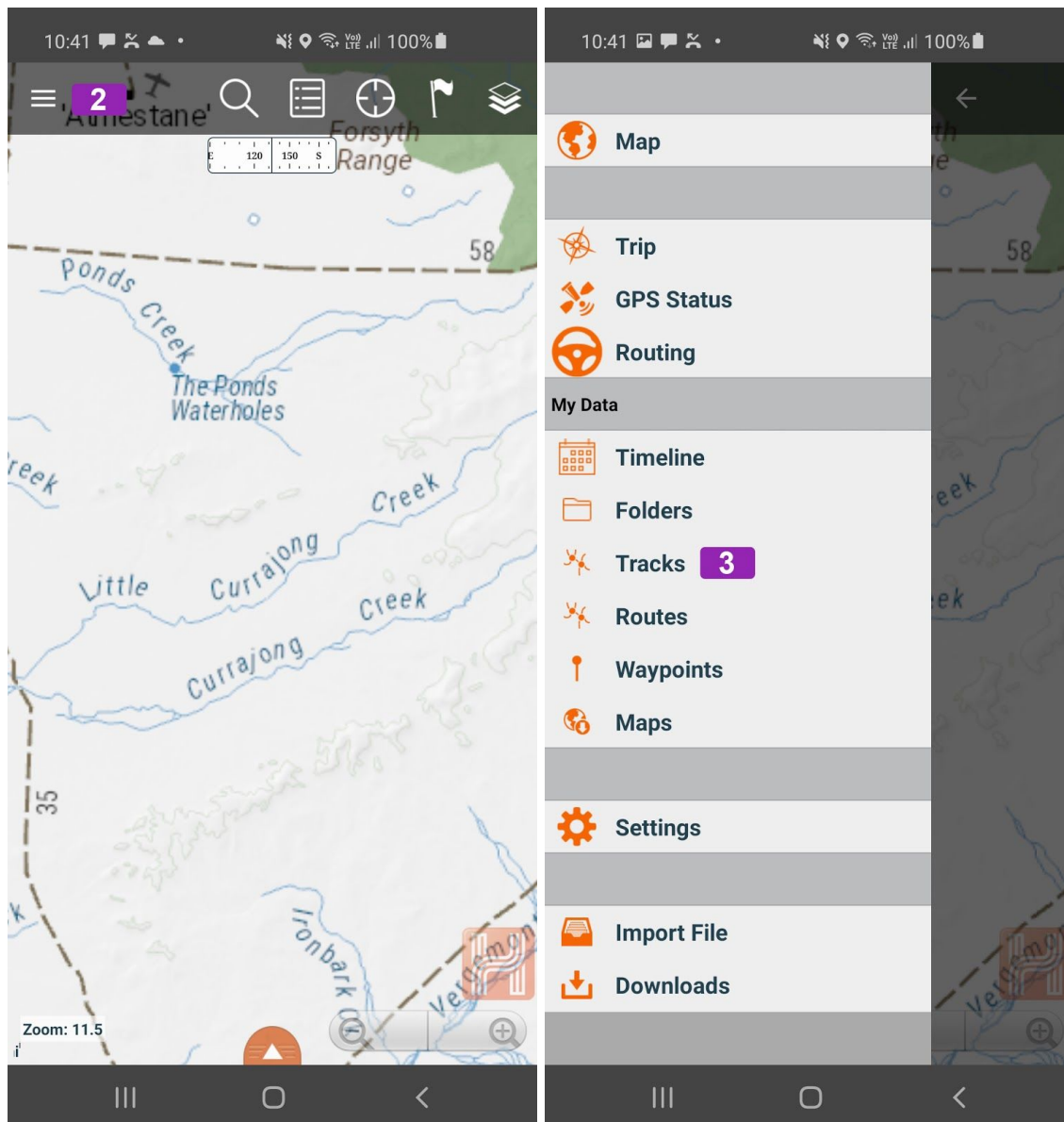


## Exporting Tracks / Waypoints from the Hema Explorer App

This guide is designed to help you export existing data from the Hema Explorer App and upload to the Hema Explorer Cloud if the App is unable to complete a sync automatically.

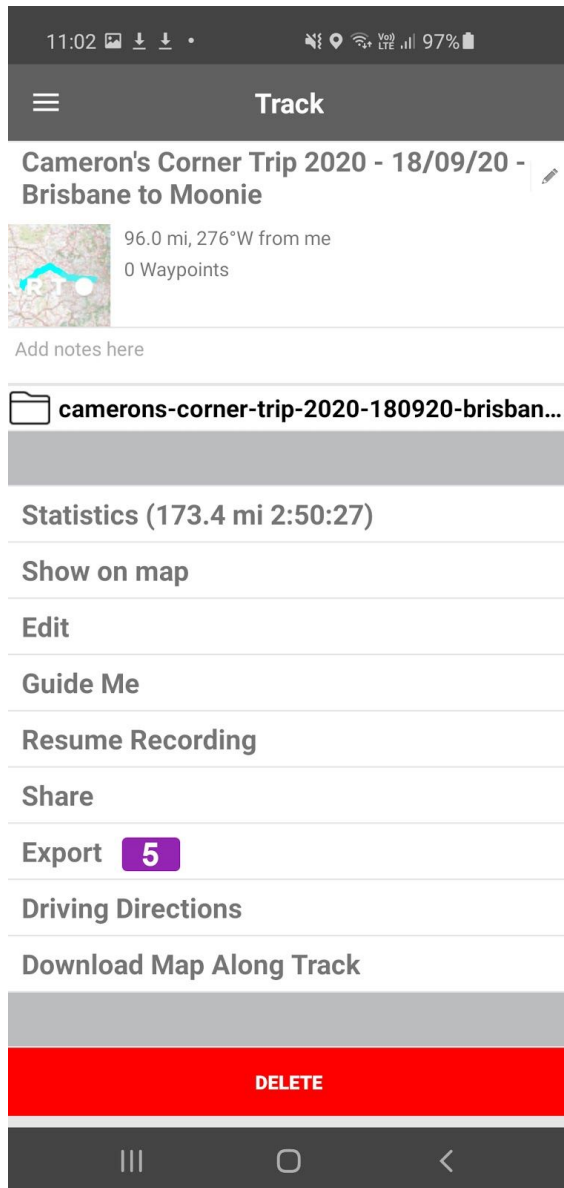
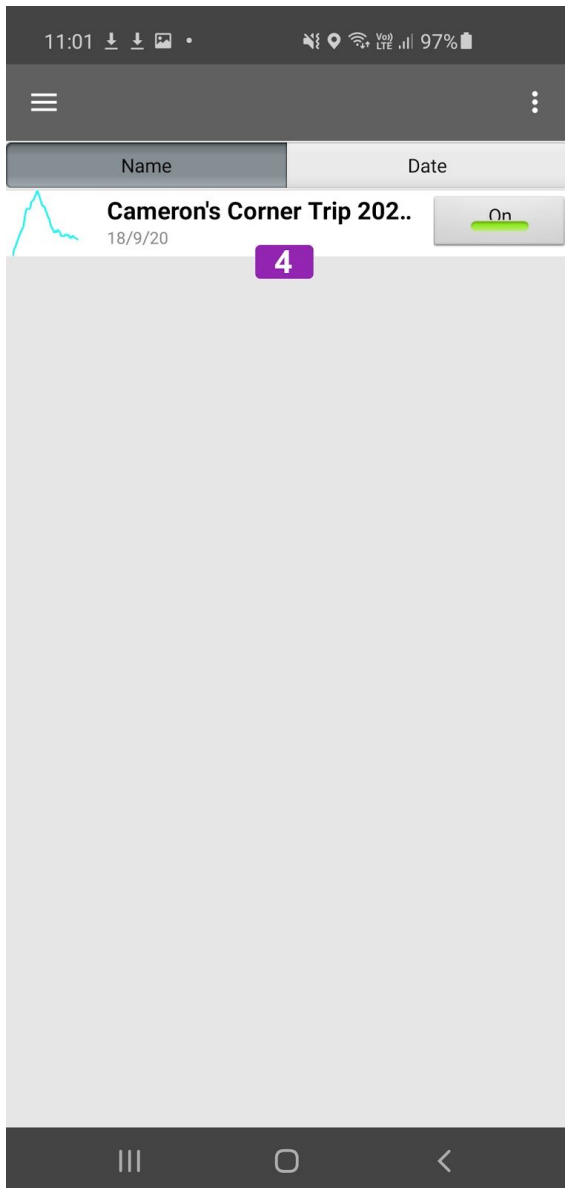
Please note: This guide was written for Android devices running Hema Explorer v3.0.13. Some steps will be different for iOS or different versions of Android.



**Step 1:** Open the Hema Explorer App on your device

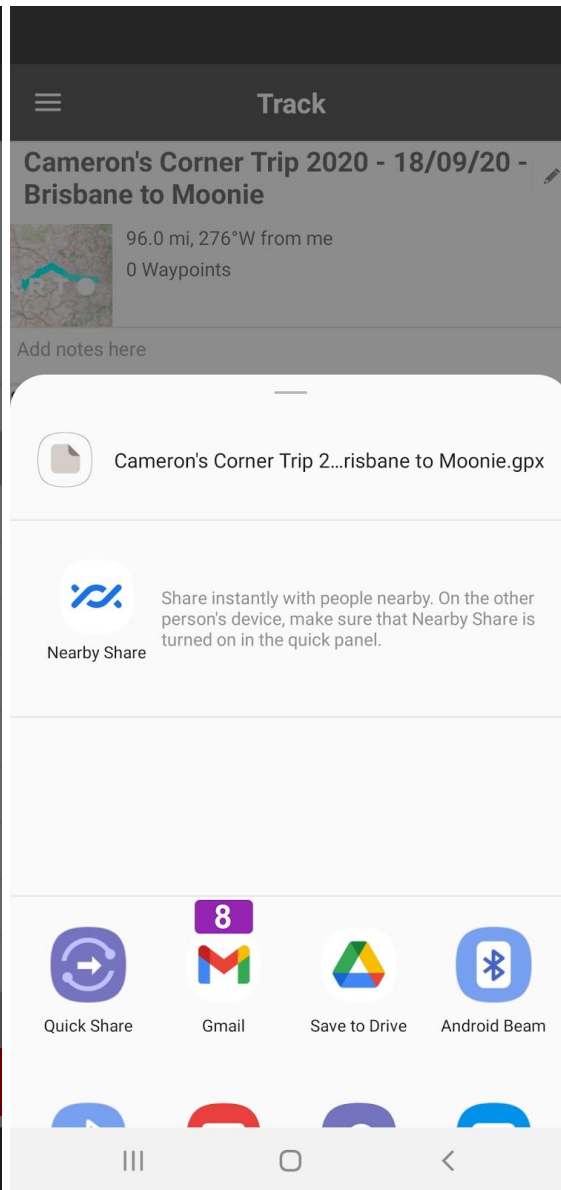
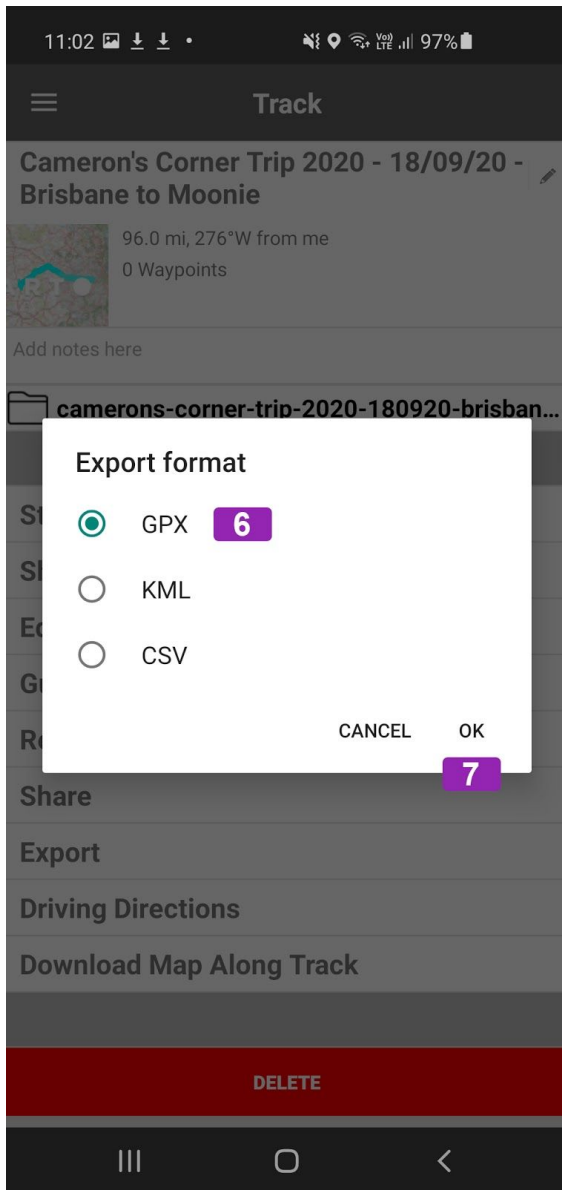
**Step 2:** Open the Main Menu in the top left corner.

**Step 3:** For this example we will export a track, please click on Tracks in the Main Menu



**Step 4:** Select the Track you wish to export.

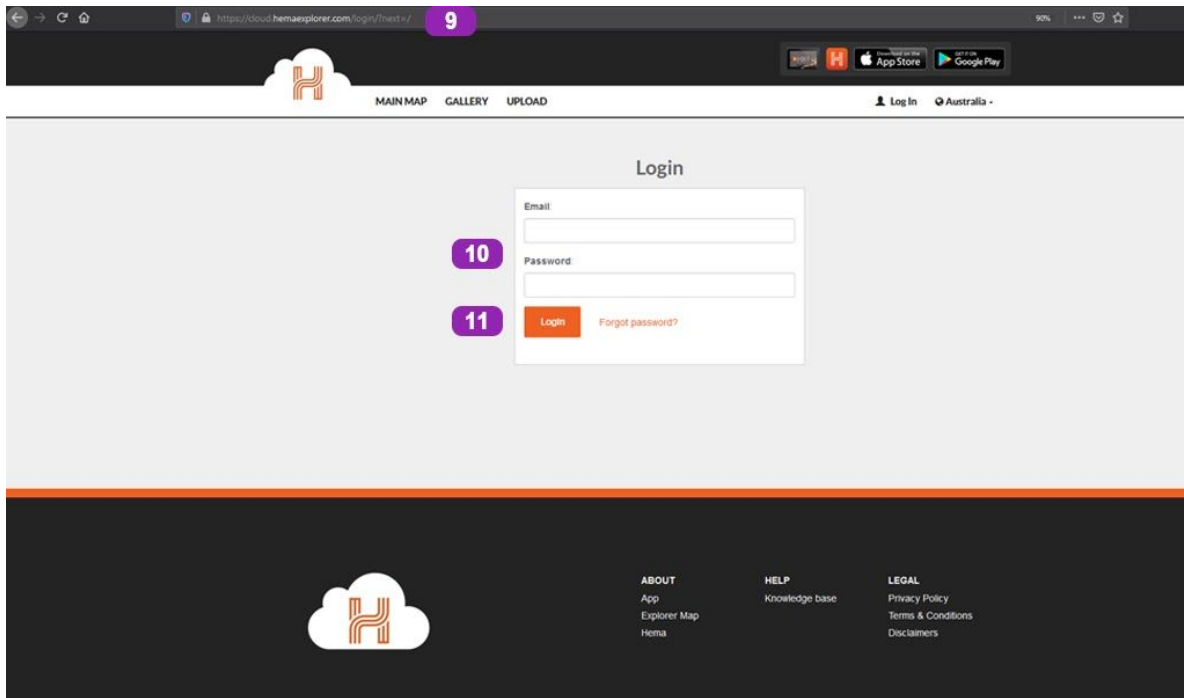
**Step 5:** From the Track Information page, click on the Export Heading.



**Step 6:** A popup window will appear and ask you to pick the format you would like to export, we recommend that you use the GPX format.

**Step 7:** Once you have selected the format please click OK.

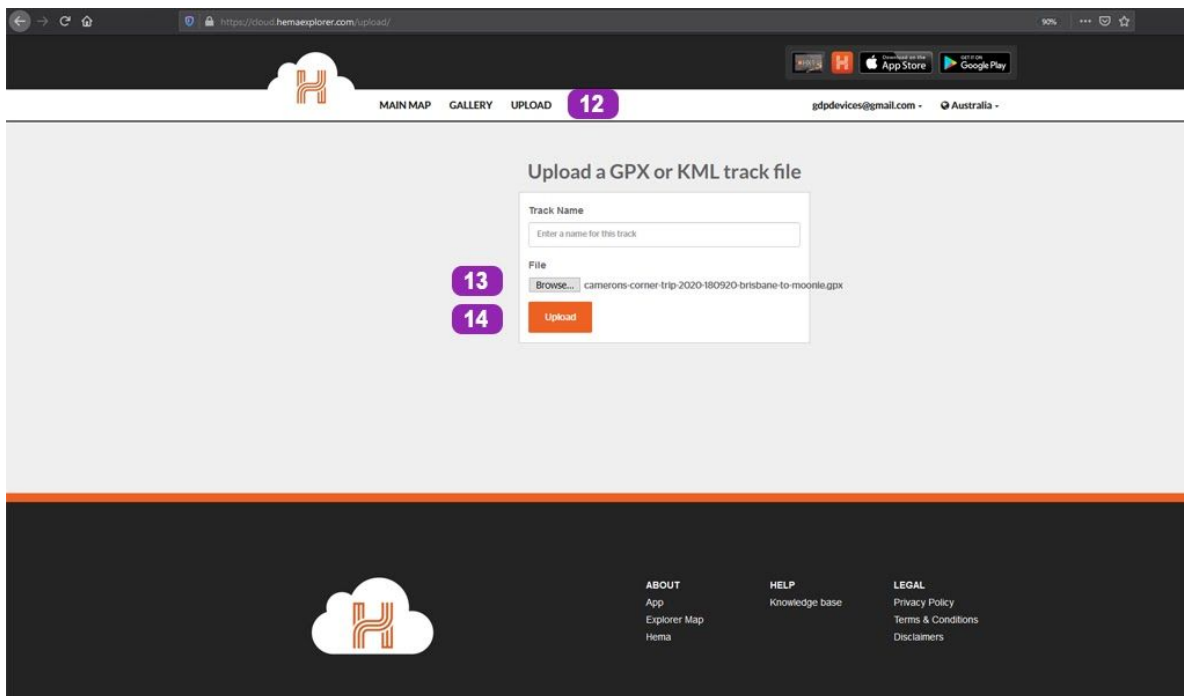
**Step 8:** You will then be asked how you want to export the information. We recommend emailing the GPX file to yourself and then uploading it to the Hema Cloud website.



**Step 9:** Open the Hema Cloud website in your browser at <https://cloud.hemaexplorer.com>.

**Step 10:** Enter the same username and password as your App

**Step 11:** Click Login



**Step 12:** Click the Upload heading.

**Step 13:** When the page loads, click either Browse or drag the file you want to upload onto the Browse button.

**Step 14:** When the name of the file is displayed click Upload

The screenshot displays the Hema Explorer web application interface. At the top, there is a navigation bar with the Hema Explorer logo, a 'MAIN MAP' button, and a 'GALLERY' button. The user's email 'gdpdevices@gmail.com' and location 'Australia' are visible. The main content area features a title 'Cameron's Corner Trip 2020 - 18/09/20 - Brisbane to Moonie' with an 'Upload Photos' button and the date '9/18/20'. Below the title is a social media sharing section with icons for Facebook, Twitter, and LinkedIn. An orange bar contains links for 'Download', 'Driving directions', 'Flag content', 'Favourite', and 'Be the first to comment'. The main content is divided into three sections: a profile section on the left with a placeholder for a user profile, a map section on the right showing a route from Brisbane to Moonie, and a 'NEARBY TRACKS' section at the bottom left listing 'Back Roads to Janowen Hills' as 2.7 km away. A speed and elevation graph is also visible at the bottom right.

When the track is uploaded you will see the Track Information Screen.