



SAP-PI Data Accelerator

Bring SAP and PI data together in days — not months — with one, easy to use packaged solution.

DATASHEET

Accelerate Delivery of Data & Analytics Initiatives

Integrating SAP and PI data is hard and time consuming. The Element SAP-PI accelerator was designed for data engineers, data scientists, data analysts, IT personnel and plant engineers who struggle to achieve rapid, analytical outcomes to solve business problems.

The Data Accelerator provides everything you need — out-of-the-box — to rapidly and easily bring PI System and SAP data together, create and deploy asset models, use them in connection with time-series and transactional data, and visualize your assets at scale, across the Enterprise.

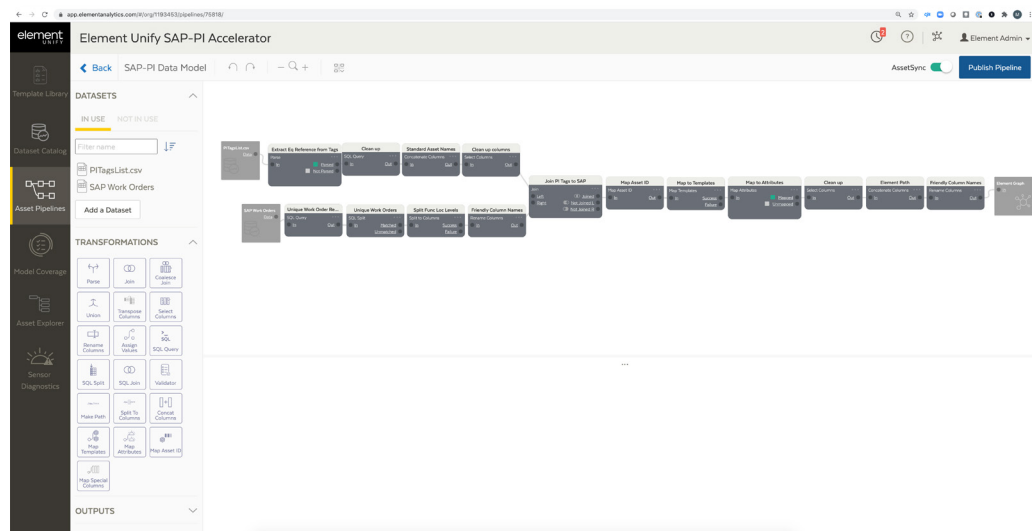
Element Unify is at the heart of every data accelerator. Unify is the leading Industrial IT/OT data management solution for delivering blended SAP and PI System data. Unify integrates and contextualizes Industrial data, with a powerful governance engine ensuring data integrity across the enterprise.

Critically, the accelerator delivers a meaningful impact to the business, enabling faster speed to insight with analytics tools, rapid app deployment, and easy data pipeline development.

Everything You Need in One Package

The SAP-PI Data Accelerator is one of several Data Accelerators offered by Element and includes:

- Element Unify
- Sample SAP and PI System datasets with time series and maintenance data
- Pre-configured equipment templates
- No-code data pipelines for IT/OT data transformation & contextualization
- Manual exports of SAP PM and OSisoft PI data (can use PI connectivity)
- Microsoft PowerBI sample dashboard
- Element Unify product documentation and video training
- Access to Element's Data Engineering team for coaching



How Your Business Benefits

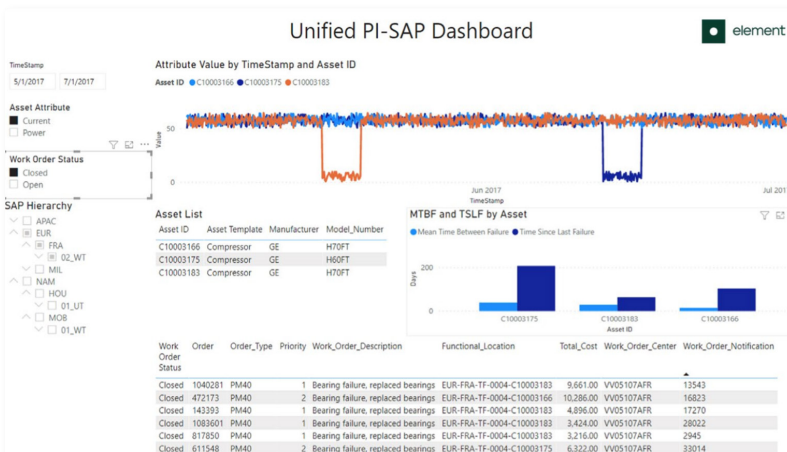
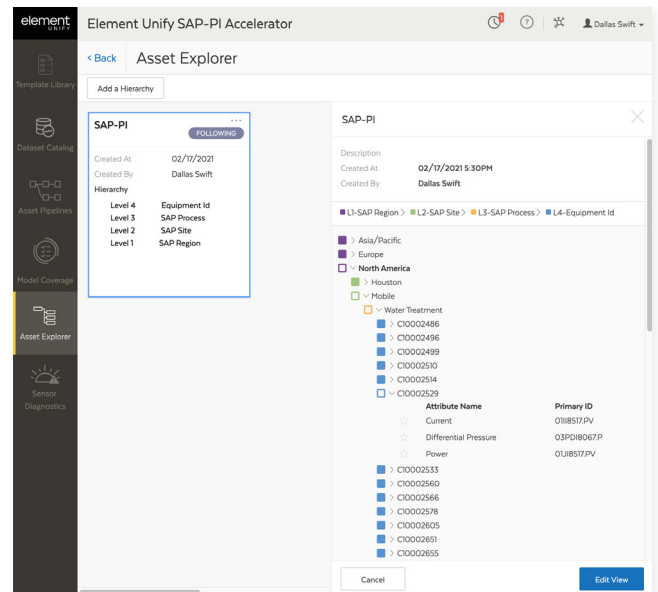
- **Faster Time to Analytics Insight** — deploy apps in days, not months
- **Improved Operations at Scale** — bring time-series and EAM data together quickly and easily
- **Lower TCO** — easily design and build pipelines and reduce pipeline maintenance burdens
- **Extensible Foundation** — build product blueprints for blending SAP and PI data
- **Rigorous Governance** — ensure data quality and integrity across the Enterprise

Enjoy Analytic Insight in Days, Not Months

The Element SAP-PI Data Accelerator speeds deployment and adoption of industry-leading analytical applications. When paired with business intelligence (BI) and analytical tools, Element Unify spans the gap between raw, siloed, and disorganized data and enriched, contextualized, and structured data. Element Unify empowers the user to build complex asset models with ease.

The Asset Data Model from Element Unify can be used in various consuming applications from business intelligence, visualization, data science and IIoT platforms.

After accessing the asset data models from Element Unify, several example dashboards can be created in Power BI, or a variety of other analytics tools, to visualize the time-series trends of example attributes as well as the work order history of assets. These visualizations are all governed by a hierarchical view of assets that is created in Element Unify.



This dashboard utilizes the asset data models from Element Unify to correctly associate real-time data sensors to specific attributes and work order history of the assets. Additionally, the asset data models from Element Unify enable organizing the assets with respect to their location at the desired hierarchy, to easily find and access the desired assets. The contextualization implemented from SAP/PI data convergence with Element Unify enables more complex use cases like predictive maintenance and OEE, that can be easily visualized in Power BI and similar BI tools.

Related Products

Element Unify | P&ID Context Client | Excel Plug-In | Element Unify for AWS | AF Management Client | Sensor Diagnostics | Element Unify for Azure

About Element

Element powers digitally-enabled operations for the Industrial Enterprise. Tackling one of the most critical gaps in Industrial IIoT — the fact that 95% of data across the Industrial Enterprise is unusable because it's fragmented and disconnected — Element Unify breaks through the data silos by bringing IT and OT data together for the first time on a single solution. With Element Unify, IT and OT teams can collaboratively make data-driven operational and business decisions around rich, contextualized metadata, while ensuring scale, reliability and security.

