



HRRP

**Hospital Readmission
Reduction Program**

The background features a series of concentric circles in light gray, some solid and some dashed, creating a ripple effect. A blue callout box with a pointed bottom is centered on the page.

What Qualifies a Readmission?

Medicare will penalize hospitals who have an excess number of patients who returned to a hospital within 30 days.

**Readmissions
are counted only
for patients who
were originally
treated for:**

- 01** Heart Failure (HF)
- 02** Heart Attack (AMI)
- 03** Pneumonia
- 04** Chronic Obstructive Pulmonary Disease (COPD)
- 05** Hip and Knee Replacement
- 06** Coronary Artery Bypass Graft Surgery (CABG)

Fiscal Year 2022

Readmissions were calculated based upon readmissions
between July 1, 2017 – December 1, 2019.

Fiscal Year 2022

The last 6 months of the performance period were removed due to the chaos of the pandemic.



3,046
hospitals

were eligible for the
HRRP program




2,499
hospitals

received a penalty for
their Readmission
performance



82%

That's 82% of eligible hospitals



Penalties will apply to
those hospital's
Medicare payments

between
October 1, 2021-
September 30, 2022

1,186
hospitals

received a higher penalty
than they did the year before





1,617
hospitals

received a lower penalty
than the year before



3%

is the maximum
penalty assessed

The background of the slide features several thin, curved lines in a light gray color, some solid and some dashed, creating a sense of motion or a stylized globe. On the left side, there is a blue graphic element consisting of a horizontal bar at the top and a larger square below it. The square has a small triangular pointer at the bottom center.


39
hospitals

will receive the maximum penalty which means 3% will be deducted from each payment for a Medicare patient stay over the next fiscal year

The background features a series of concentric circles in light gray, some solid and some dashed, creating a ripple effect. A blue callout box with a downward-pointing triangle is centered on the page.

0.64%

is the average
penalty assessed



This average has
decreased over the last
year, which was

0.69%

States with the most penalized hospitals:

States with the most hospitals penalized

1



Texas

217 hospitals

48% of all TX hospitals

2

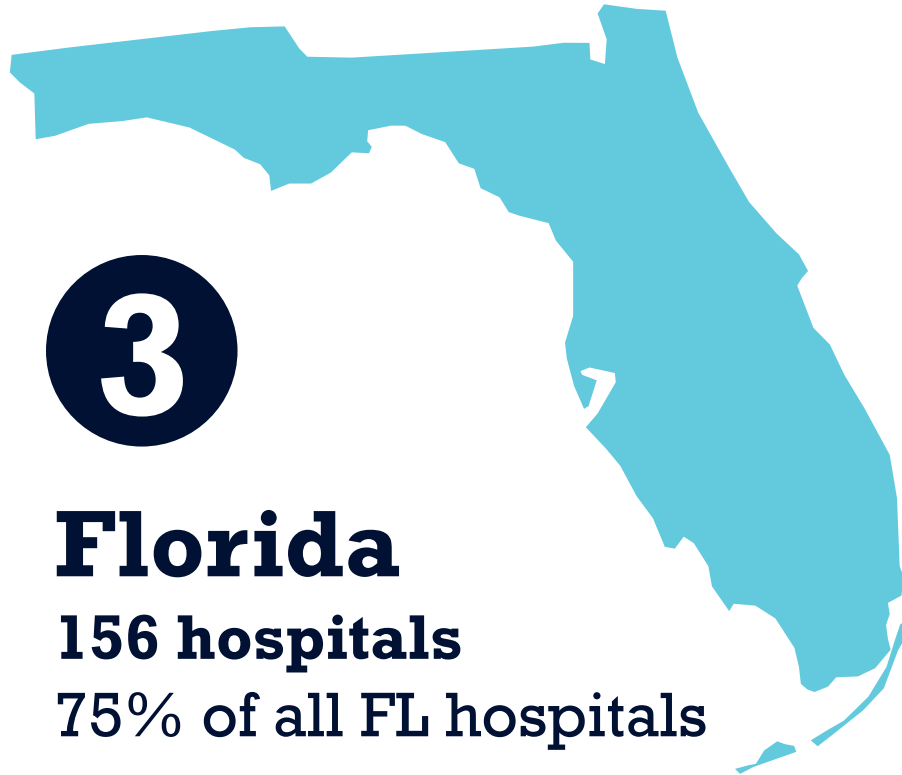


California

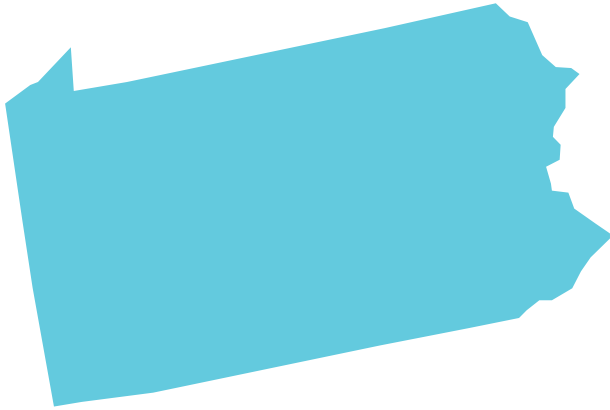
208 hospitals

56% of all CA hospitals

States with the most hospitals penalized



States with the most hospitals penalized



5

Pennsylvania

117 hospitals

63% of all PA hospitals



6

Illinois

109 hospitals

57% of all IL hospitals

States with the most hospitals penalized

7



Ohio

105 hospitals

54% of all OH hospitals

8



Georgia

81 hospitals

55% of all GA hospitals

States with the most hospitals penalized



9

Tennessee

73 hospitals

62% of all TN hospitals

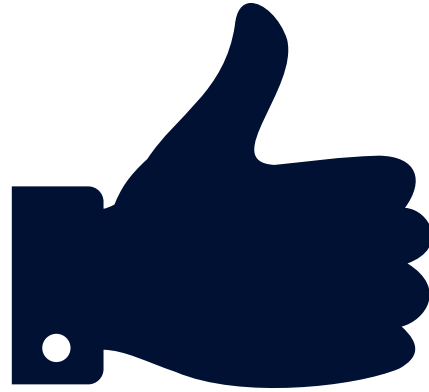


10

Michigan

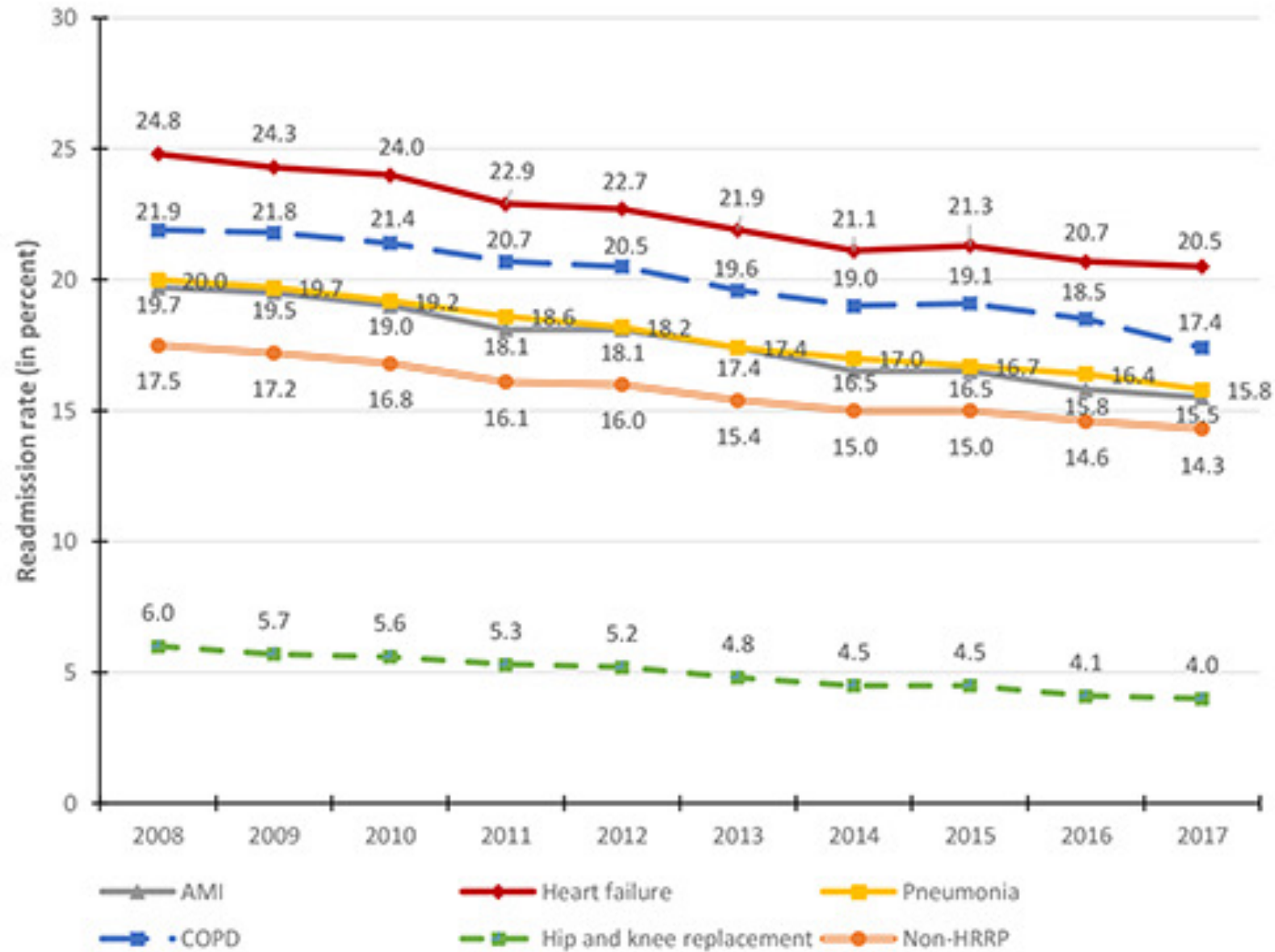
72 hospitals

50% of all MI hospitals



While there remains work to be done, there has been a decline in Readmissions since 2010.

Figure 2. Risk-adjusted unplanned readmission rates for conditions covered by the HRRP, 2008-2017





Will you be a part of the solution?

Medisolv.com | 443-539-0505 | info@medisolv.com

© 2021 Medisolv, Inc. All rights reserved.