



**"From Substation to Workstation ...
We're Distribution Unleashed!"**



800.872.7000

www.pepconet.com



Corporate Mailing Address
P.O. Box 1570
Willoughby, Ohio 44096

Corporate Physical Address
33210 Lakeland Blvd.
Eastlake, Ohio 44095

Electrical + Utility/High Voltage + Industrial/Automation
Data/Communications + Lighting + Safety/Tools



www.pepconet.com

Electrical + Utility/High Voltage + Industrial/Automation
Data/Communications + Lighting + Safety/Tools



The Pepco organization is led by a strong team of qualified and experienced leaders committed to continuously improving customer satisfaction through service to our clients.

Pepco's New E-Commerce Website

Who We Are

Pepco, a premier electrical solutions distributor and packager, meets the needs of its customers by providing them with a full line of quality products, support personnel, and expert services.






We offer complete solutions for all of our customers' electrical needs. Our service-oriented professionals and engineers are equipped to create customized solutions designed to meet our clients' individual demands.

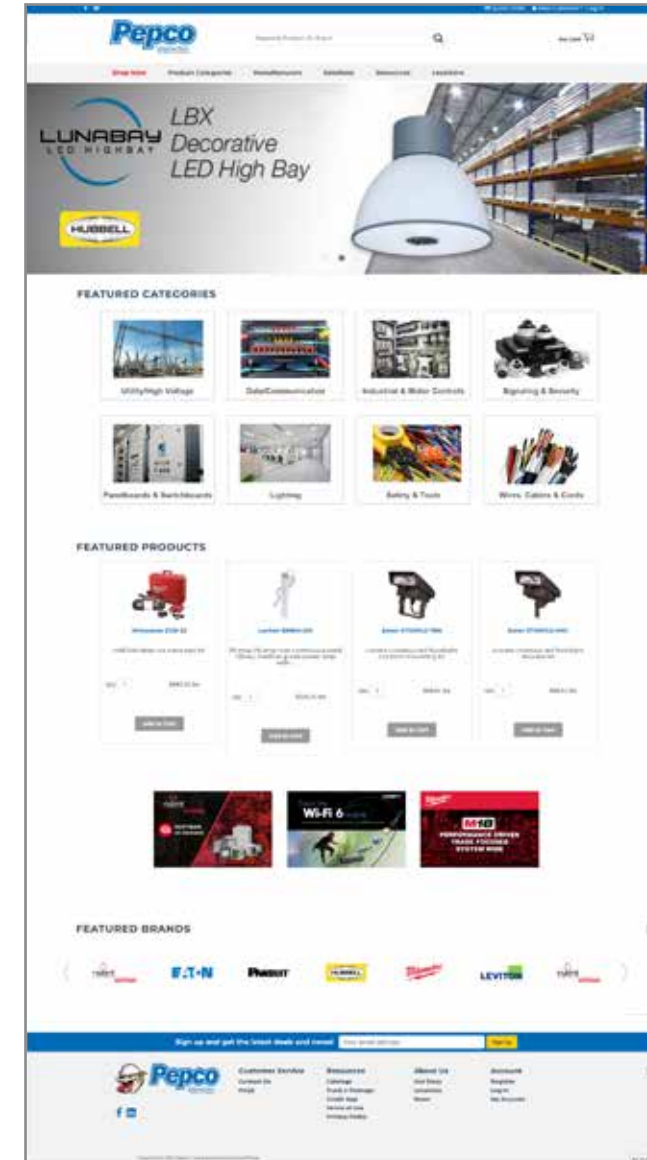
We are fully committed to supporting our clients at every level of their business, through any stage of any project. From design and support, to successful implementation, we are committed to your business's success.

With thousands of products from over 200 of the industry's top manufacturers; we are your complete source for electrical solutions.

Consistently ranked as one of the top 60 electrical distributors in the United States by tED Magazine, Pepco is uniquely positioned to bring value-added services and cost efficiencies to assist its customers with power distribution, utility/ high voltage, industrial/automation, data communications, lighting, safety/tools, and national power & utility packaging products and solutions.

Pepco at a Glance

-  Employs more than 170 highly experienced, service-oriented professionals and engineers
-  230,000 square feet of total warehouse space
-  200+ manufacturers represented
-  Operates a fleet of delivery trucks
-  Eight locations throughout Ohio



Pepco is pleased to introduce our new e-commerce website that offers our customers a 24/7, convenient service to meet their product needs.

Benefits of E-Commerce:

- Ease of ordering online and a quick check out process
- Enhanced product search capabilities. Search by part number, description, manufacturer or product category
- Inventory is real time data. All Pepco locations offer current viewable inventory
- Manage your orders by creating a "quick order" pad and/or "re-order pad". Our online system will save this information for the next time you log-in to save time
- Review your account online. See open orders, order history, account information and monthly statement
- Access to data sheets, product features and descriptions, videos and much more

Already a current Pepco customer? Register at <https://shop.pepconet.com/request-login> to receive access to our online e-commerce website.



Pepco
EASTLAKE

Pepco
AKRON

Pepco
CANTON

Pepco
TOLEDO

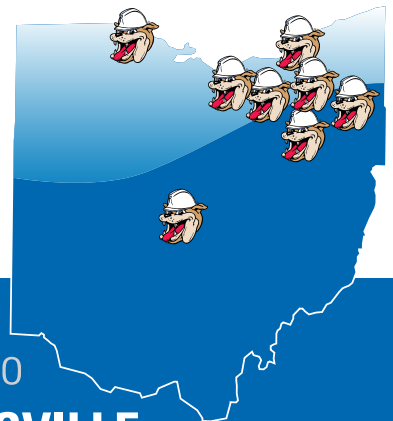
Pepco
COLUMBUS

Pepco
ELYRIA

Pepco
WARREN

Pepco
**WARRENSVILLE
HEIGHTS**

Pepco operates a fleet of trucks and over 230,000-square-feet of total inventory at its eight locations throughout Ohio.



Pepco was founded in 1968 and currently has eight branch locations throughout the state of Ohio. See the graphic to the right to view a timeline of the development and growth of the company throughout the past 50+ years.

Pride

Pride is the satisfaction in having done something well.

Excellence

Excellence is the result of dreaming more than others think is practical and expecting more than others believe is possible.

Perseverance

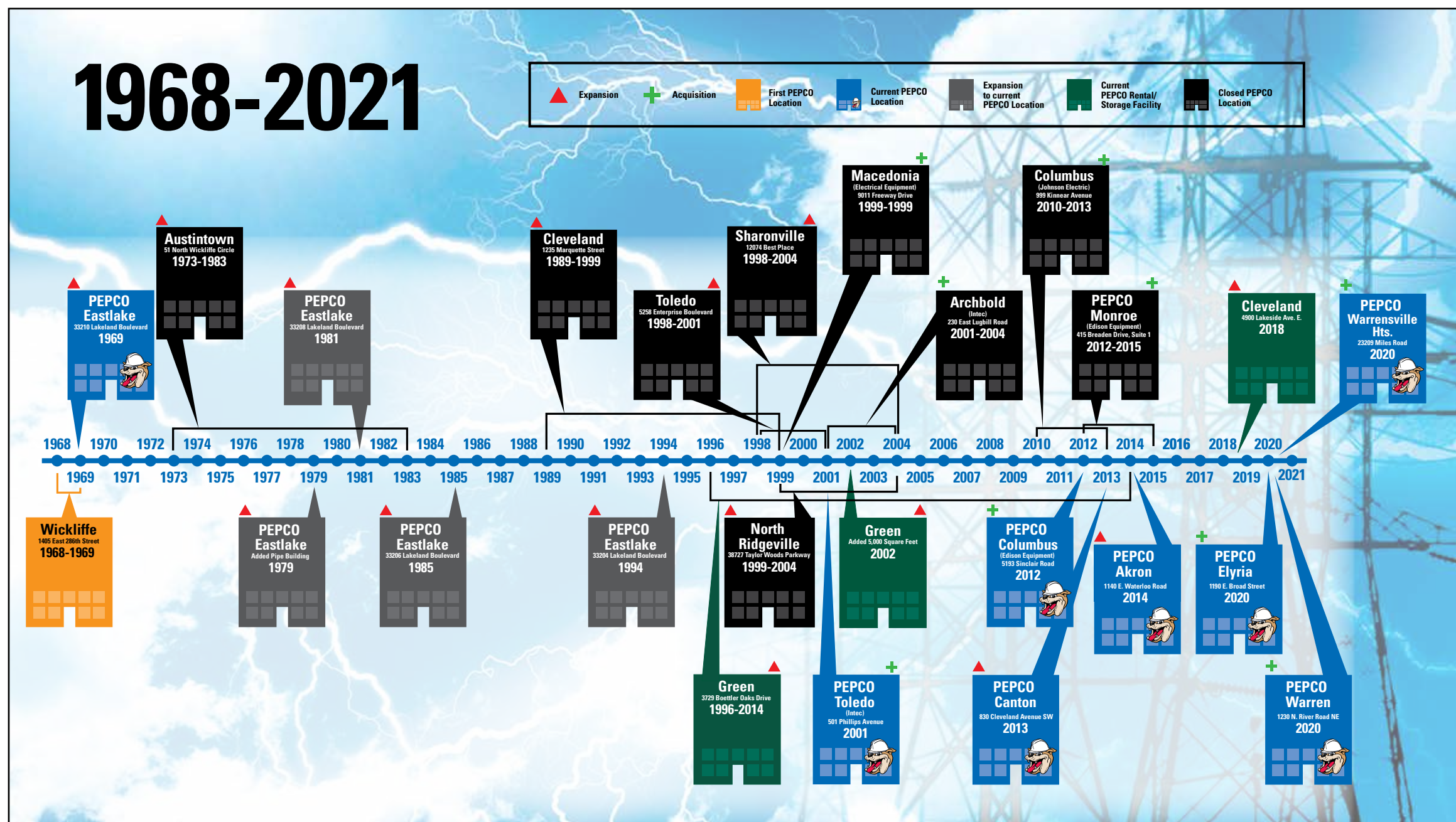
Perseverance is continuing down the path in the face of adversity.

Character

Character is having the morals and ethics of conducting positive day-to-day business.

Optimism

Optimism is the belief that good can come from all situations.



Products and Solutions

Pepco is *Comprehensive Electrical Distribution*

Pepco can help you implement cost-effective solutions for any type of electrical requirement. We have the products and solutions for your Construction (Residential, Commercial & Industrial), Utility, Government & Institutional, and Industrial projects.

+ Electrical Supplies

Pepco offers a broad selection of products and services that will allow you to fulfill all of your electrical supply needs. A complete inventory of your daily commodity items, including wire and cable, conduit and fittings, in addition to electrical distribution and components, lighting, datacom, safety and tools are complimented by general supplies. Our professional, service-oriented sales team will enhance the customer experience and elevate the relationship to a trusted, knowledgeable partnership.

+ Safety/Tools

Pepco provides a complete line of tools and safety equipment, including hand tools, testers, PPE, and much more. Our staff is highly experienced and trained in current OSHA standards and can present your organization with the latest products and technologies available in the market. We also offer on-site training, product demonstrations, and safety equipment testing services.

+ Lighting

Pepco is a leader in providing lighting solutions for all of your residential, commercial, industrial and utility projects. Pepco's lighting team can be an integral part of the process by evaluating, recommending, and executing lighting requirements to meet the demands of today's sustainable initiatives. Our knowledgeable and highly trained staff, LC and Controls Certified, can provide a complete analysis and audit of your current facility. Once completed, we will provide a detailed report that highlights the upfront costs, energy savings, potential rebates available and payback calculations.

+ Data/Communications

Pepco offers a broad selection of leading manufacturer's Data/Communications products including a full line of premise infrastructure supplies. Our team of skilled professionals will provide complete product solutions, per your request. This includes all of your voice, data, audio, video and surveillance and life safety products for commercial, industrial, institutional or utility applications.



+ National Power & Utility Packaging

Pepco is a national job packager for power and utility projects. Our cross-functional business platform brings value-added services and cost reductions to the power and utility projects for our customers. Our packaging capabilities allow us to unite our traditional expertise in power distribution with centralized products packaging, management and logistical support.

+ Power Distribution

Pepco specializes in switchgear, medium and high voltage projects, with the knowledge and capabilities to deliver timely, complete and accurate solutions. Our Project Managers coordinate timely deliveries and material staging with our Logistical Support Groups to ensure on-budget distribution projects. Our Team can also form a pre-construction budget analysis to better understand your needs and the appropriate resources for your project.

+ Utility/High Voltage

Pepco's expert utility and high voltage team of sales professionals combine products from all of our divisions to meet the requirements and specifications of any transmission, substation, or distribution project, while furnishing customers with in-house electrical engineers capable of assisting with procurement and design. Customers have access to an Emergency Hotline 24 hours a day/7 days a week/365 days a year should they need materials or services during non-business hours.

+ Industrial/Automation

Pepco's highly skilled engineering staff and global manufacturing representation deliver superior problem-solving ideas and support for all of your industrial/automation requirements. Pepco can partner to successfully implement new automation strategies and deliver emerging technologies across all of today's challenging industrial lot platforms. Pepco complements these services with a broad selection of inventory available for next day deliveries. Pepco has over 230,000 square feet of warehouse space and over 33,000 SKU's in stock for next day servicing of your OEM and MRO product requirements.

Pepco Can Help you Save Time and Money

by Providing you with a Variety of Managed Services

VMI - Vendor Managed Inventory



VMI (Vendor Managed Inventory) is a program in which Pepco teams up directly with your business to help manage your day-to-day inventory processes. This

relationship is customized to fit your organizational needs that may involve managing your entire inventory or just a specific subdivision of supplies and materials based on an individual job or project.

Once you've determined where you need the most assistance, Pepco will engage in managing your material flow from the ordering of materials, delivery, and stocking your racks and shelving on-site. VMI is an effective way to improve your inventory performance. It can help your organization reduce your warehouse operating costs by freeing up your employee's time to take on more critical tasks. It can also help lower your overall inventory investment allowing you to focus on your core business, therefore improving your cash flow.

- Customized program to meet customers' needs
- Set clear and defined objectives and goals
- Define items and set minimum and maximum levels
- Scheduled progress reviews
- Bar code and labeling requirements
- Dedicated VMI Team resources
- Use technology for ease of managing with the Innovo App



Product Modification Services

Pepco can provide custom modified enclosures within your project time line requirements via use of a Steinhauer Machine. There is no modification too large as this machine has the capacity to modify an enclosure up to 94 inches tall and 86 inches wide.

- Pre-Site Modified Enclosure Services
- Cut, Drill and Tap
- Back Panels and Full Size Enclosures
- CAD Drawing submittals for approval
- Steel, Stainless Steel and Plastic enclosures



Jobsite Management



With our team of specialists, Pepco can work with your staff to provide comprehensive project material management services. With our unique capabilities and a highly skilled staff, Pepco will work with your team to optimize efficiencies at your project site or business facility.

- We can provide an on-site 20' or 40' storage unit, complete with bin-located racking, overhead lighting and open space for bulk storage
- Collaborative effort to customize project services and maximize efficiencies for customers

- Dedicated Project Manager oversees and manages the course of the project
- Job Boxes, Wire Handling equipment, and Lighting Carts can be provided upon request
- Pre-Installed Pulling Eyes, Paralleling and cut to length services are available for Wire and Cable projects



Logistics Management



Pepco can provide special delivery services for the most challenging job sites. Pepco has the tools to package and unload your equipment at the site, per your requirements and also in emergency situations.

- Daily deliveries are offered when needed
- Assortment of material handling jobsite equipment



- Flat-bed delivery vehicle with "self-unloading" equipment for ease of off-loading larger, heavier and bulky equipment.
- Convenient 24 hour emergency line for those off-hour times of need

www.pepconet.com



"From Substation to Workstation ...
We're Distribution Unleashed!"



Safety Accessories & Tool Truck

Pepco is pleased to announce the addition of a Safety Accessories & Tool Truck to our fleet that will be traveling the state of Ohio to service all of Pepco's Utility, Construction and Industrial market channels. The launch of this new service is to bring tools directly to our customers – we aim to fill your need on-site with no down time on your project!

Our experienced staff will showcase new tool and safety product offerings from key vendors and offer hands on tool training per request. Featured items include a variety of hand tools, power tools, safety equipment, utility tools, test and measurement equipment and much more. Linemen, Electricians and Facility Maintenance Personnel and more will have the opportunity to shop and purchase items directly from the truck.

Featured Vendors

FLUKE®



WRIGHT



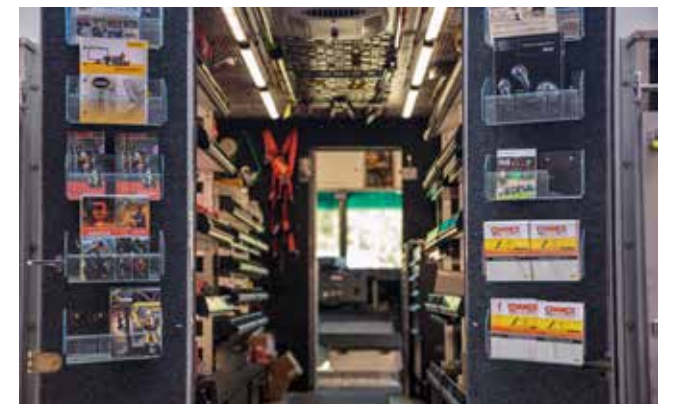
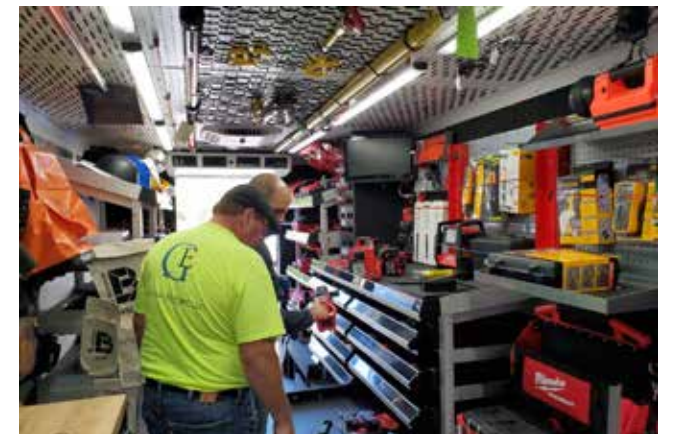
All Vendors

Bashlin	Hisco
Buckingham	HK Porter
Cementex	Hubbell
Chance	Huskie
Channellock	Illumagear
Cully	Klein Tools
Dewalt	Lug All
Estex	Madi
Flir	Milwaukee
Fluke	Pyramex
Gateway Safety	Rauckman
Greenlee	Speed Systems
Hastings	Streamlight
HD Electric	Wright Tool

Experience the Pepco Tool Truck at your next event!

To schedule a visit with your customer or employees, please contact:

800.872.7000
tooltruck@pepconet.com



www.pepconet.com



"From Substation to Workstation ...
We're Distribution Unleashed!"

