

WEDGWOOD VIEW

Deans Lane, Newcastle ST5 6BG



CERRIS
HOMES



WEDGWOOD VIEW

Located on the north side of the charming town of Newcastle-under-Lyme in Staffordshire, our new collection of beautiful 3-bedroom homes at Wedgwood View are ideal for first time buyers and families.

With excellent schools nearby and being just a stone's throw away from the town centre for shopping and leisure, there really is something for everyone living at Wedgwood View.

TRANSPORT

Wedgwood View has great transport links. Junction 16 of the M6 is a convenient 5-minute drive away, opening-up the whole of the North West for easy accessibility. Manchester Airport is 33 miles away for national and international flights and the city of Manchester just a little further. Locally the A34 and A500 are just around the corner and

Alsager, Longport and Kidsgrove train stations are all within 3 or 4 miles of the development. Local bus services can also be accessed nearby.

CULTURE

There's a good choice of local independent shops including a newsagent and Post Office on the doorstep of the development. Supermarkets are in abundance too and a short distance to travel with Waitrose 1.2 miles, ASDA 3.8 miles, Tesco Express 2.2 miles, ALDI 4.4 miles and Tesco Superstore 3.2 miles.

Affinity Outlet Staffordshire (the new name for Freeport Talke) is less than a five-minute drive away and boasts a fantastic selection of big-name brands for clothing, footwear, plug gifts, homeware and accessories, as well as a tasty selection of places to eat, drink and relax.

Living at Wedgwood View will give residents convenient access to a many gyms and other sporting facilities, including the recently renovated Alsager Leisure Centre, just 3.1 miles away from the development.

The Red Street Community Centre, just a 5-minute walk away, hosts various activities from karate classes, to senior citizen bingo, and old-time dancing. It's also home to local football club, Chesterton AFC. For keen golfers, the nearby Alsager Golf and Country Club has an 18-hole course and clubhouse, as well as a bowling green.

For lovers of the great outdoors, Wedgwood View is close to numerous parks, and a wealth of long-distance walking and cycling routes, including the South Cheshire Way and Cheshire Ring Canal Walk. It's also conveniently close to Apedale Country Park, with its 184 hectares of woodland, meadows and pools to explore. A choice of dentists and doctors are also nearby.

SCHOOLS

Residents of Wedgwood View have several excellent schooling options available, including the nearby St. Chad's Church of England Primary School half a mile away and Crackley Bank Primary School 1.6 miles away. For secondary education, The King's Church of England School is 1.6 miles away, in Kidsgrove..



CERRIS
HOMES

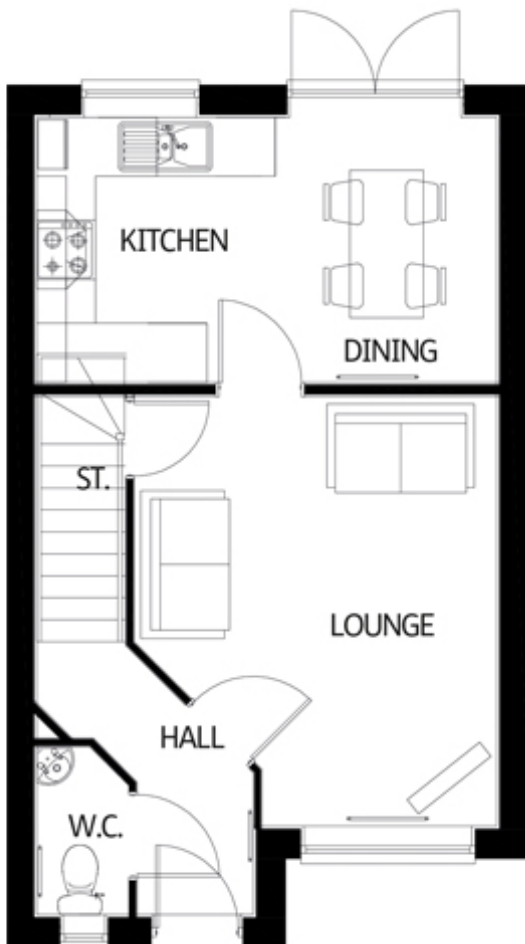
that welcome home feeling

www.cerrishomes.co.uk | 01782 854748

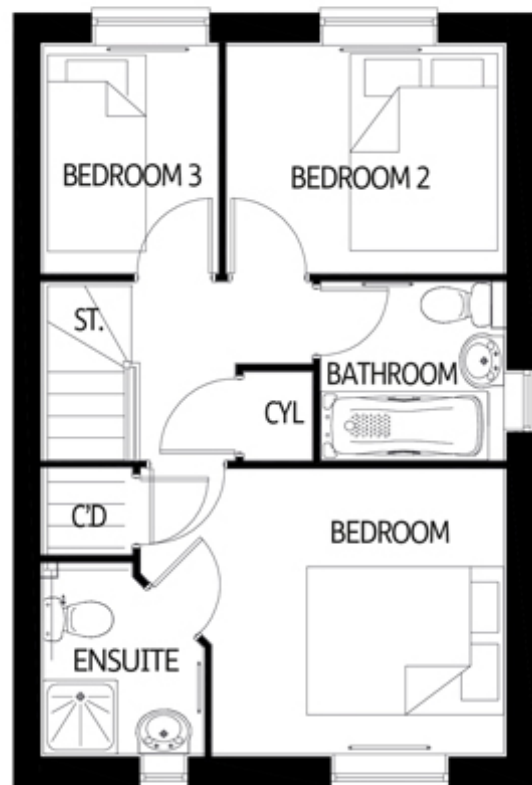


HANBURY

The Hanbury is a beautiful three-bedroom Home which combines traditional features with modern amenities. The ground floor of the property presents a hallway, large living room ideal for all aspects of family life, and a spacious, open plan kitchen and dining room. Double doors lead out to the garden, with a downstairs w.c. and upper floor staircase rounding off the ground floor. Upstairs, you'll find three ample bedrooms with the master bedroom featuring a modern en suite. The main family bathroom is accessible from the landing along with the two remaining bedrooms.



GROUND FLOOR



FIRST FLOOR



CERRIS
HOMES

that welcome home feeling

01782 854748 | www.cerrishomes.co.uk | e: newhomes@cerrishomes.co.uk |  @CerrisHomes

Aspire Housing Ltd T/A Cerris Homes, Kingsley, The Brampton, Newcastle-under-Lyme, ST5 0QW

A registered society with the Financial Conduct Authority registration number 31218R. Homes Communities Agency registration number L4238.
Registered office: Kingsley, The Brampton, Newcastle-under-Lyme ST5 0QW VAT No 927 405227.