

HALL DRIVE PARK

Hall Drive, Alsager, Cheshire ST7 2UD



CERRIS
HOMES



HALL DRIVE PARK

Expertly designed to an exceptional standard and offering the best of rural contemporary living, our collection of new 3-bedroom homes at Hall Drive Park in Alsager, are perfect for first-time buyers and families alike. Given the excellent road and rail links, commuters will also be drawn to this superb development in Alsager, a small, historic market town in Cheshire, with farmland and beautiful countryside on its doorstep.

TRANSPORT

Hall Park Drive is less than a mile from Alsager Railway Station, and then 10 minutes journey time to Crewe, which has excellent connections to the entire rail network, including London less than 2 hours away.

For drivers, Junction 16 of the M6 is less than 2 minutes from the

development, giving easy access to all parts of the region, as well as the North West and the Midlands. For air travel Manchester Airport is just 30 miles from Hall Park Drive.

CULTURE

The development is just a few-minutes-walk away from the Crewe Road (B5077) and town centre, where there are a variety of local shops, supermarkets, cafes, restaurants, pubs and takeaway food options. The town also hosts a weekly market, every Wednesday.

For more serious shoppers, Crewe is only 7 miles away and boasts many High Street names, twice weekly indoor and outdoor markets, two large shopping centres and a variety of independent retailers and the Affinity Outlet Staffordshire (the new name for Freeport Talke) is just 4 miles away, with a fantastic selection of big-name brands for clothing, footwear, plug gifts, homeware and accessories, as well as a tasty selection of places to eat, drink and relax.

For health and fitness pursuits, Alsager Leisure Centre is a family-friendly venue and only 0.7 miles from Hall Park Drive. It has a wide range of fitness classes for all ages and abilities, a 25-metre swimming pool, squash courts, a gym and a fitness suite. For people who like to take their exercise outdoors, the development's immediate proximity to open countryside offers numerous walkways, bridle paths and cycle routes.

Open to members and non-members, the immaculate, tree-lined parkland setting of Alsager Golf and Country Club is less than a 5-minute drive from Hall Park Drive. The course is open and playable all year round and maintained in stunning condition.

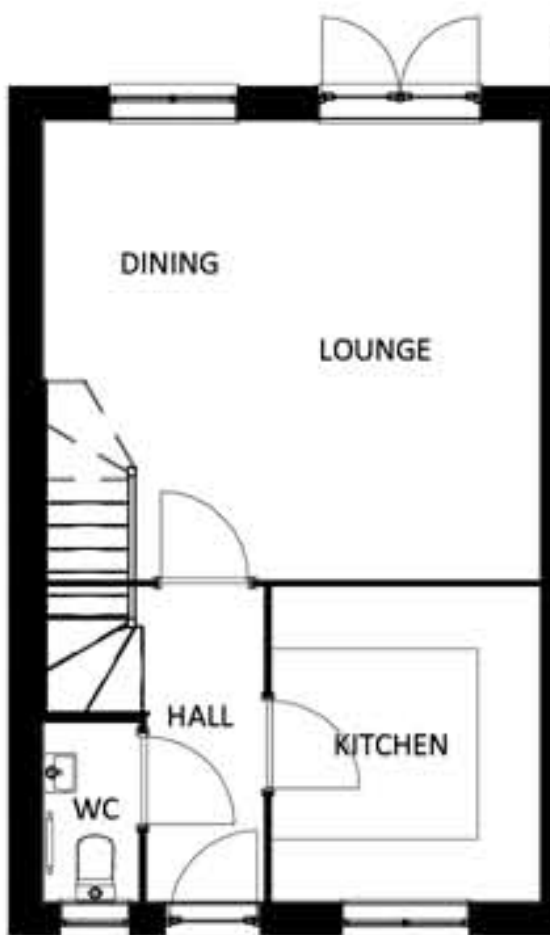
SCHOOLS

There's a good selection of primary and secondary schools in Alsager, including; St Gabriel's Roman Catholic Primary School, Excalibur Primary School, Alsager School and Cranberry Academy. Furthermore, Staffordshire University is 10 miles from the development and Manchester Metropolitan University's Cheshire campus is just over 5 miles away.

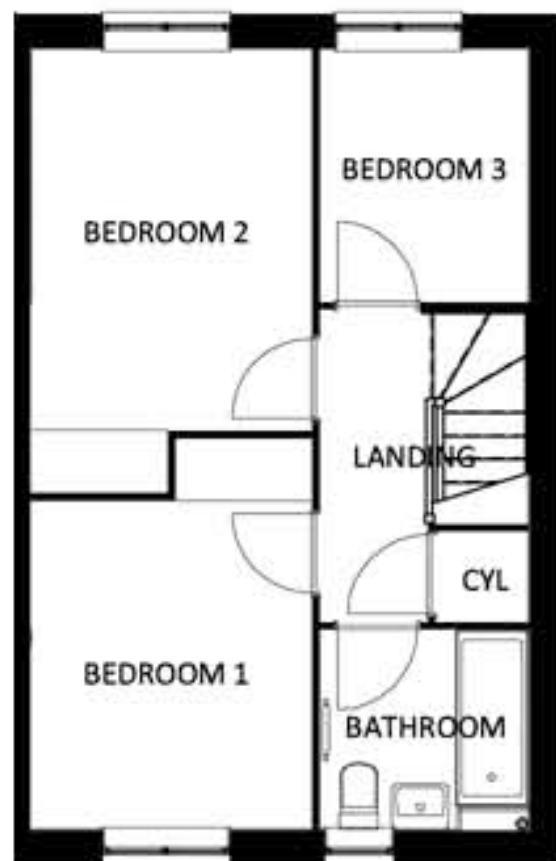


WOODRUSH

The Woodrush is a beautiful three bedroom home ideal for growing families. The ground floor presents a hallway, spacious, open plan living room and dining area, ideal for all aspects of family life and a stylish and contemporary kitchen. Double doors lead out to the garden with a downstairs w.c and upper floor staircase rounding off the ground floor. Upstairs you will find three ample bedrooms with the main family bathroom accessible from the landing.



GROUND FLOOR



FIRST FLOOR



CERRIS
HOMES

that welcome home feeling

01782 854748 | www.cerrishomes.co.uk | e: newhomes@cerrishomes.co.uk | [@CerrisHomes](https://twitter.com/CerrisHomes)

Aspire Housing Ltd T/A Cerris Homes, Kingsley, The Brampton, Newcastle-under-Lyme, ST5 0QW

A registered society with the Financial Conduct Authority registration number 31218R. Homes Communities Agency registration number L4238.
Registered office: Kingsley, The Brampton, Newcastle-under-Lyme ST5 0QW VAT No 927 405227.