

# BLUEBELL GREEN

London Road, Crewe, Cheshire CW4 8BE



CERRIS  
HOMES



## BLUEBELL GREEN

**Our exclusive collection of two and three bedroom homes are available at Bluebell Green. Beautifully finished with expert attention to detail these new homes are ideal for first time buyers and families alike.**

Bluebell Green lies just south of the village of Holmes Chapel, which in turn is located eight miles north of Crewe and 21 miles south of Manchester. Known as Church Hulme until 1974, the Cheshire village has a population of around 6,000. Overlooking the Dane Valley, the area is a hot spot for walkers and cyclists, as well as being home to the world-famous Jodrell Bank Science Centre.

### TRANSPORT

Located only one mile from J18 of the M6, Holmes Chapel is ideal for commuters to Manchester and Liverpool. The A50 also runs through the village, with market

towns Sandbach and Congleton a 20-minute drive away.

Holmes Chapel has its own railway station, situated on the Crewe to Manchester line, with regular buses servicing the village. For further afield journeys, Manchester airport is actually 20 miles via M6 or 16 miles via A34 from development address.

### CULTURE

Filled with a rich history, Holmes Chapel plays host to the old cotton mills, along with an impressive number of listed buildings such as Grade I listed, St Luke's Church, built in 1430. There's also modern amenities aplenty, with a shopping precinct, supermarket and bakery, as well as a variety of cafés, bars, pubs and restaurants.

Home to Jodrell Bank, space lovers can enjoy visiting the Lovell Telescope, or make a three-mile journey into nearby town, Middlewich, for the annual Folk & Boat Festival. Attracting 400 narrowboats and

thousands of visitors, the town also holds regular farmers' markets.

The local shops in Holmes Chapel also have a lot to offer, with a variety of independently family run businesses and quaint little boutiques within the town centre, along with our everyday essential amenities such as the Post Office, Pharmacy, Hairdressers and of course the famous Mandeville bakery. There is an excellent choice of pubs and restaurants too.

### SCHOOLS

All of the village's schools have an 'outstanding' rating from Ofsted - primary schools, Holmes Chapel Primary School and Hermitage Primary School, along with secondary school and sixth form, Holmes Chapel Comprehensive School. Manchester Metropolitan University Cheshire campus is located nine miles away, with Keele University 16 miles away.

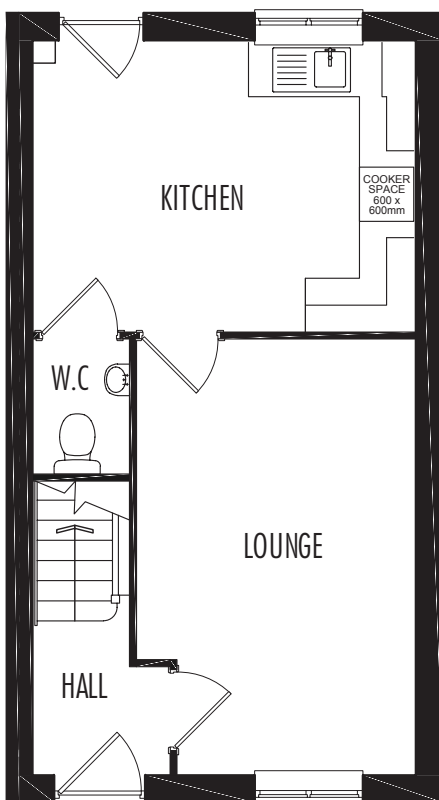




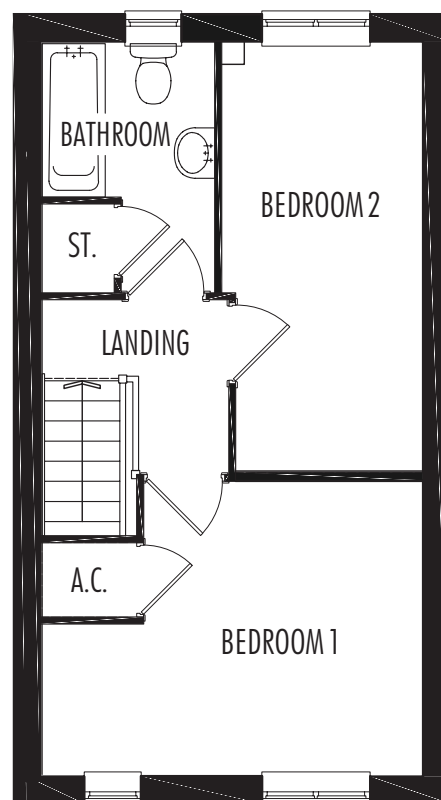
## SINCLAIR

A spacious two bedroom home offering a lounge and open plan kitchen/dining area which leads to the garden.

The first floor offers two good sized bedrooms and a family bathroom.



GROUND FLOOR



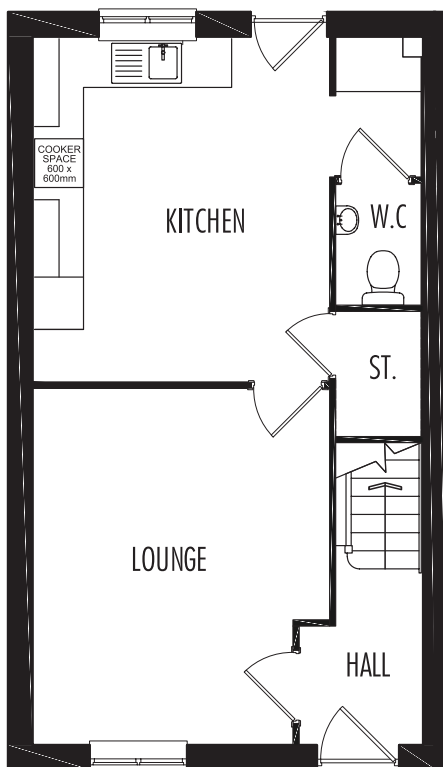
FIRST FLOOR



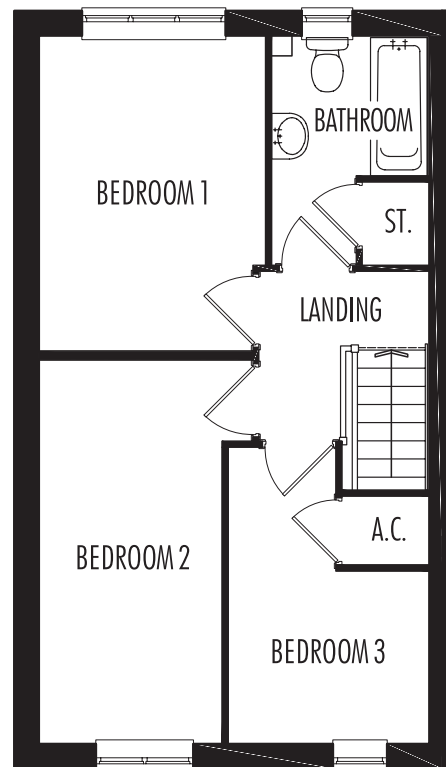
## SORLEY

Good sized modern family home, the ground floor offers a lounge and to the rear a kitchen and dining area with a separate utility and WC.

The first floor gives 3 bedrooms with a family bathroom and plenty of storage areas.





GROUND FLOOR



FIRST FLOOR





 Sorley  
 Sinclair



**CERRIS**  
HOMES

*that welcome home feeling*

01782 854748 | [www.cerrishomes.co.uk](http://www.cerrishomes.co.uk) | e: [newhomes@cerrishomes.co.uk](mailto:newhomes@cerrishomes.co.uk) |  @CerrisHomes

Aspire Housing Ltd T/A Cerris Homes, Kingsley, The Brampton, Newcastle-under-Lyme, ST5 0QW

A registered society with the Financial Conduct Authority registration number 31218R. Homes Communities Agency registration number L4238.  
Registered office: Kingsley, The Brampton, Newcastle-under-Lyme ST5 0QW VAT No 927 405227.