

AGIMENDO.process

Customizing Guide

Product Version	v3.1.11 and higher
Status	Released
Date	27.03.2017
Responsible Person	Mathieu André (mathieu.andre@ibsolution.de)

Summary

This release note is a summary of customizing options to adopt AGIMENDO.process to customer needs without modifying existing code. For further information please refer to the user manual. This documentation is provided by the development department of the IBsolution GmbH.

1. Table of Contents

- 1. Table of Contents2**
- 2. Introduction3**
- 3. Customizing table: /ISV/AP_SETTINGS4**
 - 3.1 General4
 - 3.2 Customizing Options.....5
 - 3.3 Installation of Process Types.....9
- 4. Creating Job for Background Process.....10**
- 5. Appendix12**
 - 5.1 Document History.....12
 - 5.2 Table of Figures12

2. Introduction

AGIMENDO.process has been developed to easily design and administrate planning processes in an SAP BI-IP (integrated planning) project.

It provides the functionality to design a process and its responsibilities (such as controllers and planers) and to execute the designed process and even configure it during runtime.

AGIMENDO.process consists of a bundle of SAP WebDynpro ABAP applications and serves as an abstract and user-friendly layer to administrate the planning process in BI-IP.

The application will be delivered as an SAP ABAP transport request that contains all necessary objects. After importing the transport request and running through the installation procedure the application components can be called directly via URL or could be integrated to a portal.

This documentation will guide you through customizing the application.

3. Customizing table: /ISV/AP_SETTINGS

3.1 General

The package /ISV/AGIM_PC contains a table named “/ISV/AP_SETTINGS”. This table covers nearly all customizing options for the process control application.

The table contains two columns: NAME and VALUE. In the NAME column, you find the customizing keys below. The settings can be maintained in the VALUE column.

Do not delete customizing entries – even if you do not need them. Clear the corresponding value to an unused key instead.

Please set all relevant customizing options by running the program /ISV/AP_CONFIG_INSTALL (Figure 1 and Figure 2):

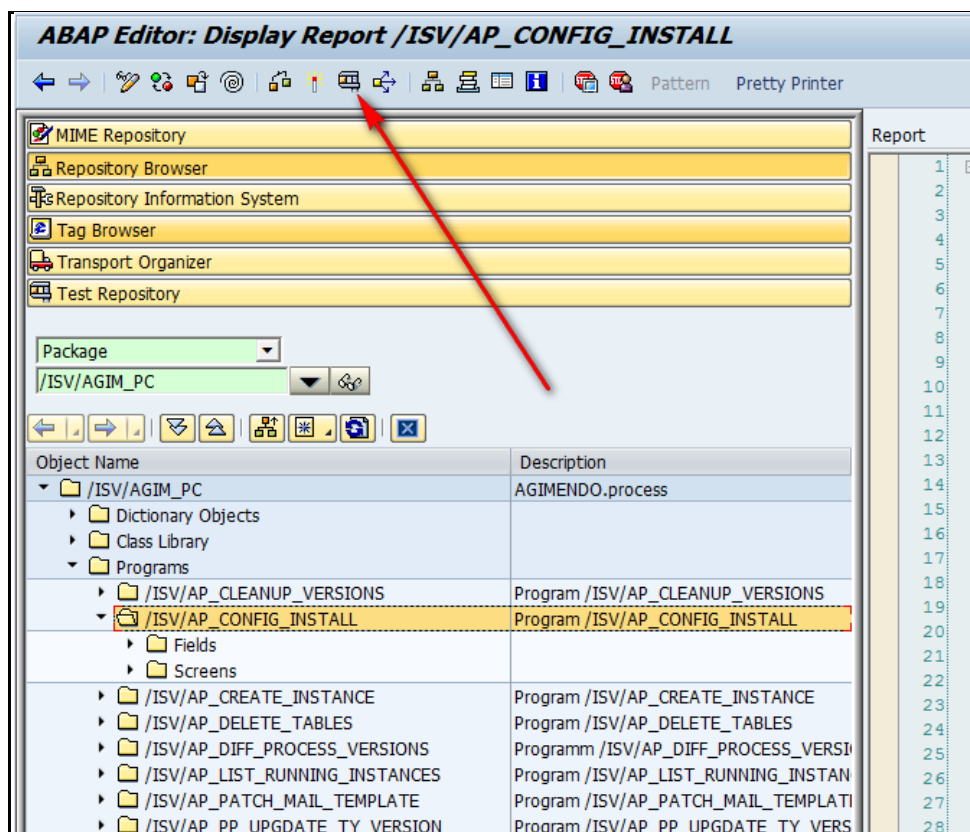


Figure 1. Run program /ISV/AP_CONFIG_INSTALL


Program /ISV/AP_CONFIG_INSTALL	
	
Default Email Sender Address	<input type="text"/>
Default Email Sender Name	<input type="text"/>
Default Text Language	<input type="text" value="E"/>
Email Notification Active	<input checked="" type="checkbox"/>
Email Sender Option	<input type="text" value="DEFAULT"/>
Number of PC Visible Columns	<input type="text" value="15"/>
Process Runtime URL	<input type="text"/>
Process Designer URL	<input type="text"/>
Show Buttons to switch apps	<input checked="" type="checkbox"/>

Figure 2. Set customizing options via program /ISV/AP_CONFIG_INSTALL

3.2 Customizing Options

Name: **DEFAULT_EMAIL_SENDER_ADDRESS**

Default Value: agimendo.process@ibsolution.de

Description: The value specifies the default sender’s address for automated email notifications that are sent by AGIMENDO.process. As recipient address the user’s email address, maintained in SU01, will be used.

Name: **DEFAULT_EMAIL_SENDER_NAME**

Default Value: Process controlling AGIMENDO.process

Description: The value specifies the default sender’s name for automated email notifications that are sent by AGIMENDO.process.

Name: **DEFAULT_TEXT_LANGUAGE**

Default Value: EN

Description: The value specifies the default language for all UI texts labels for the case, these UI text labels don’t exist in the actual system language.

Name: **MAIL_NOTIFICATION_ACTIVE**

Default Value: X

Description: The value specifies whether the automated email notification is active or not. Possible values are:

'X' - mail notification is active;

' ' – mail notification is not active.

Name: **MAIL_SENDER_OPTION**

Default Value: DEFAULT

Description: The value specifies the sender for automated email notifications that are sent by AGIMENDO.process. Possible values are:

DEFAULT – use default user as mail sender (in this case values for parameters DEFAULT_EMAIL_SENDER_ADDRESS and DEFAULT_EMAIL_SENDER_NAME will be used);

OWNER – use the 1st owner of the process as mail sender;

CURRENT_USER – use the current user as mail sender).

Name: **NUMBER_OF_PC_COLS_VISIBLE**

Default Value: 15

Description: The value specifies the number of visible columns for the work area control table in AGIMENDO.process Runtime Cockpit.

Name: **NUM_OF_WA_COLS_VISIBLE**

Default Value: [empty]

Description: The value specifies the number of visible columns for the workareas table in AGIMENDO.process Runtime Cockpit. Possible values are: empty (default size) or an integer number, preferably between 5 and 15.

Name: **PROCESS_RUNTIME_URL**

Default Value: /sap/bc/webdynpro/isv/ap_process_runtime

Description: The value specifies the URL for calling AGIMENDO.process Runtime Cockpit

Name: **PROCESS_DESIGNER_URL**

Default Value: /sap/bc/webdynpro/isv/ap_process_designer

Description: The value specifies the URL for calling AGIMENDO.process Designer

Name: **SHOW_APPSWITCH_BUTTONS**

Default Value: X

Description: The value specifies whether a navigation button from the Designer to the Runtime Cockpit and vice versa is displayed or not. Possible values are:

'X' – buttons are displayed;

'' – buttons are not displayed.

3.3 Technical Options (/ISV/AP_SETTINGS)

Name: **AUTH_CHECK_ENABLED**

Default Value: 'X'

Description: The value specifies whether performing permission checks is necessary or not. Possible values are:

'X' – permission checks are performed

'' – permission checks are skipped

Name: **AUTH_SETTING_ADV_**

Default Value: <BTN_DEL_PS> <BTN_CLOSE_INST>

Description:

The value specifies which button should be active according to the /ISV/APC3 permission object (Activity 70). Possible values are:

<BTN_DEL_PS> – “Delete Process” button (in Designer)

<BTN_CLOSE_INST> – “Close instance” button (in Runtime)

3.4 Installation of Process Types

AGIMENDO.process needs process step definitions. These process templates are called “Process Types”. To install the provided process types you have to execute the following programs.

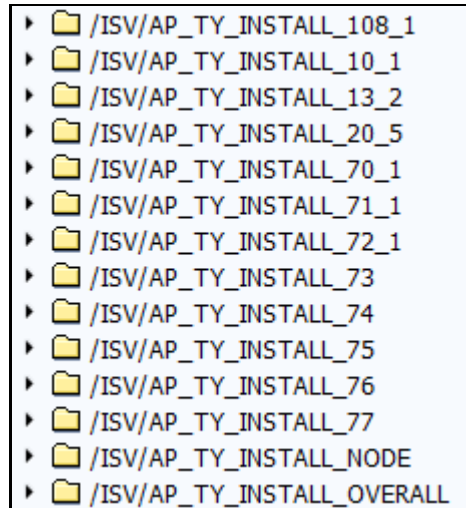
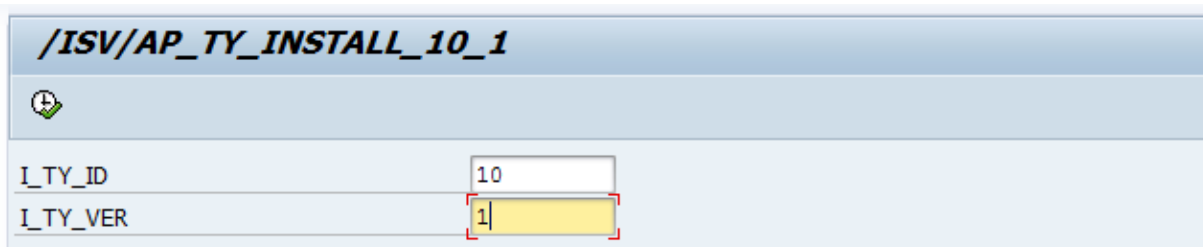


Figure 3: List of currently shipped process type install scripts

Each listed program with the naming convention /ISV/AP_TY_INSTALL_XX_Y installs a single process type in a specific version. For example, the program /ISV/AP_TY_INSTALL_10_1 installs the process type with the ID 10 in version 1. While executing the program, you are requested to define the target ID of the new process type. **Please, install in any case the Overall process type (program /ISV/AP_TY_INSTALL_OVERALL) and Intermediate Node process type (program /ISV/AP_TY_INSTALL_NODE) with default target IDs.**



The screenshot shows a dialog box titled "/ISV/AP_TY_INSTALL_10_1". It contains a green checkmark icon and two input fields. The first field is labeled "I_TY_ID" and contains the value "10". The second field is labeled "I_TY_VER" and contains the value "1".

Figure 4: Install process type 10 version 1

Each process type can only exist once, so if you like to install a process type twice (for example to modify a process type and keep the original one) you have to define a new process type ID). For custom process types please use an ID greater than 100.

The currently shipped process types are

- Overall (“Root”) process (1)
- Intermediate (“Node”) process (5)
- Planning process (10)
- Planning process with FC (13) – Automatic start with a configured workdays offset
- Process chain (20)

- Data completeness check (70) – needs user exit coding
- Conditional process chain (71) – needs gate in another process to enable process chain start
- Conditional data completeness check (72) – needs gate in another process to enable check
- Manual check (74)
- Manual check with view action (75) only the view action is visible in the cockpit
- Manual check with check action (76) view and check actions are visible in the cockpit
- Manual check with restart action (77) view and restart action are visible in the cockpit
- AGIMENDO.edit manual check (108) – requires AGIMENDO.edit

3.5 Installation of Triggered Actions (Events)

In order to use events with the background job described in the next section, please execute the report /ISV/AP_TRACT_INSTALL. This report will add the basic configuration options for the events to be used.

4. Transport ID Number Range

In order to use the AGIMENDO.process transport manager, the number range /ISV/APTID used to identify the multiple transport must have an interval as shown in the following screenshot. If not, no new transport can be created.

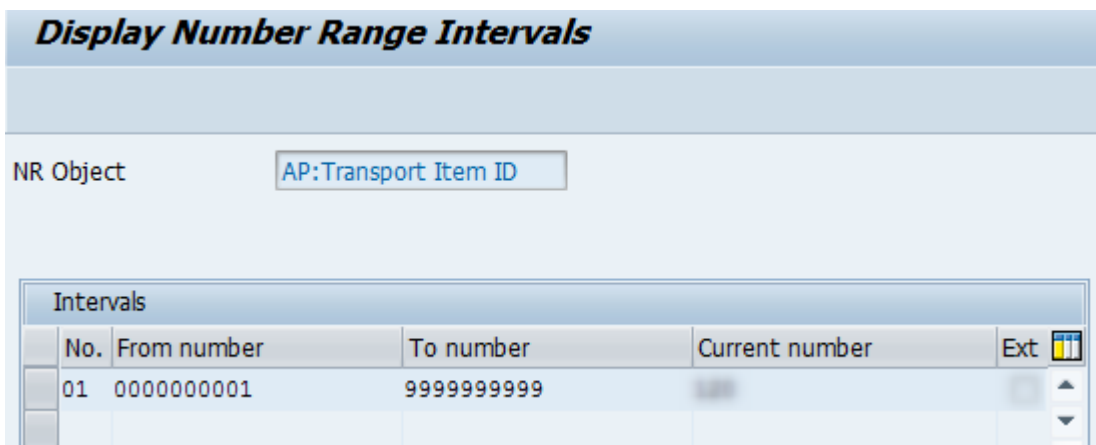


Figure 5: /ISV/APTID number range interval

5. Creating Job for Background Process

To enable the background for process triggered events to run, you have to insert a new job to execute the program /ISV/AP_EVENT_SERVICE. To perform so, run the Job-Wizard of the transaction sm36.

The program should run every day (at least every working day) and normally in the morning before start of work. Depending on your process configurations and how you are planning to use the event trigger you can also let the program run once an hour.

Every run of the program `/ISV/AP_EVENT_SERVICE` checks if there is an event to be executed.

6. Appendix

6.1 Document History

Version	Author	Short description of changes	Datum
2.0		Released	2010-05-21
2.1		Small branding changes	2010-10-01
2.2	Artjom Smirnov	Settings review und update, format update	2012-12-19
2.2.1	Felix Weyde	Install script reference	2013-01-20
2.2.2	Felix Weyde	Install script reference, Event service	2013-11-20
2.2.3	Matti Maier	Added new installation reports and refreshed images	2015-05-18
2.3	Mathieu André	Added the /ISV/AP_SETTINGS parameters	2017-03-27

6.2 Table of Figures

Figure 1. Run program /ISV/AP_CONFIG_INSTALL	4
Figure 2. Set customizing options via program /ISV/AP_CONFIG_INSTALL	5
Figure 3: List of currently shipped process type install scripts	9
Figure 4: Install process type 10 version 1	9