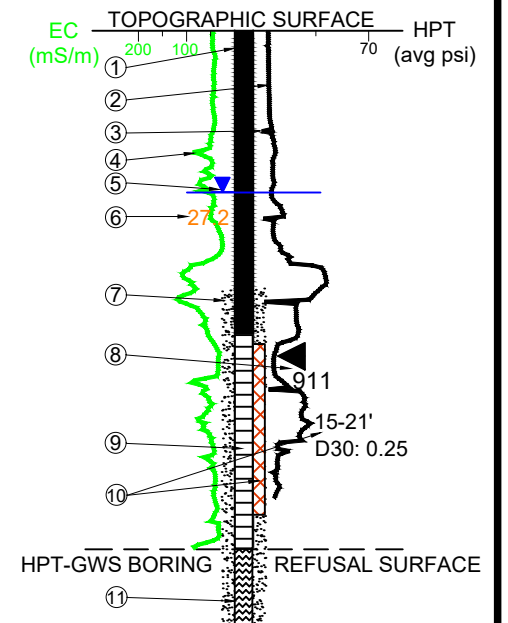


TYPICAL VERTICAL PROFILING DETAIL



LEGEND

- HPT-GWS BORING.
- HPT RESPONSE - RANGE 0 to 70 avg. PSI.
- DROP IN HPT RESPONSE INDICATES DEPTHS WHERE SAMPLES WERE COLLECTED OR ATTEMPTED.
- EC RESPONSE - RANGE 0 to 200 mS/m.
- APPROXIMATE POTENTIOMETRIC SURFACE FROM HPT-GWS BORINGS.
- DISCRETE GROUNDWATER URANIUM (ug/L) SAMPLE RESULT.
- PROPOSED EXTRACTION WELL SCREEN FILTER PACK PLACEMENT.
- PROPOSED EXTRACTION WELL PUMP INLET LOCATION (FT AMSL).
- PROPOSED EXTRACTION WELL SCREEN.
- GRAIN SIZE DISTRIBUTION SAMPLE INTERVAL WITH D30 GRAINSIZE.
- 24-INCH SUMP.

NOTES

- EC - ELECTRICAL CONDUCTIVITY
 - GWS - GEOPROBE® HPT - GROUNDWATER SAMPLER
 - HPT - HYDRAULIC PROFILING TOOL
 - ms/m - MILLISIEMENS PER METER
 - ND - NON-DETECT
 - PSI - POUNDS PER SQUARE INCH
 - ug/L - MICROGRAMS PER LITER
 - D30 - 30% OF PARTICLES ARE FINER THAN THIS SIZE (mm)
- ALL CONCENTRATIONS IN ug/L.
 - THE TOPOGRAPHIC AND REFUSAL SURFACES ARE APPROXIMATE.
 - BORING REFUSALS FOR GSD BORINGS EXCEEDED HPT-GWS BORING REFUSALS AT GE-BA1-02 AND GE-BA1-09.



FIGURE 3-4
BA1 CROSS SECTION A-A'
2020 VERTICAL DISTRIBUTION
CIMARRON SITE, OKLAHOMA