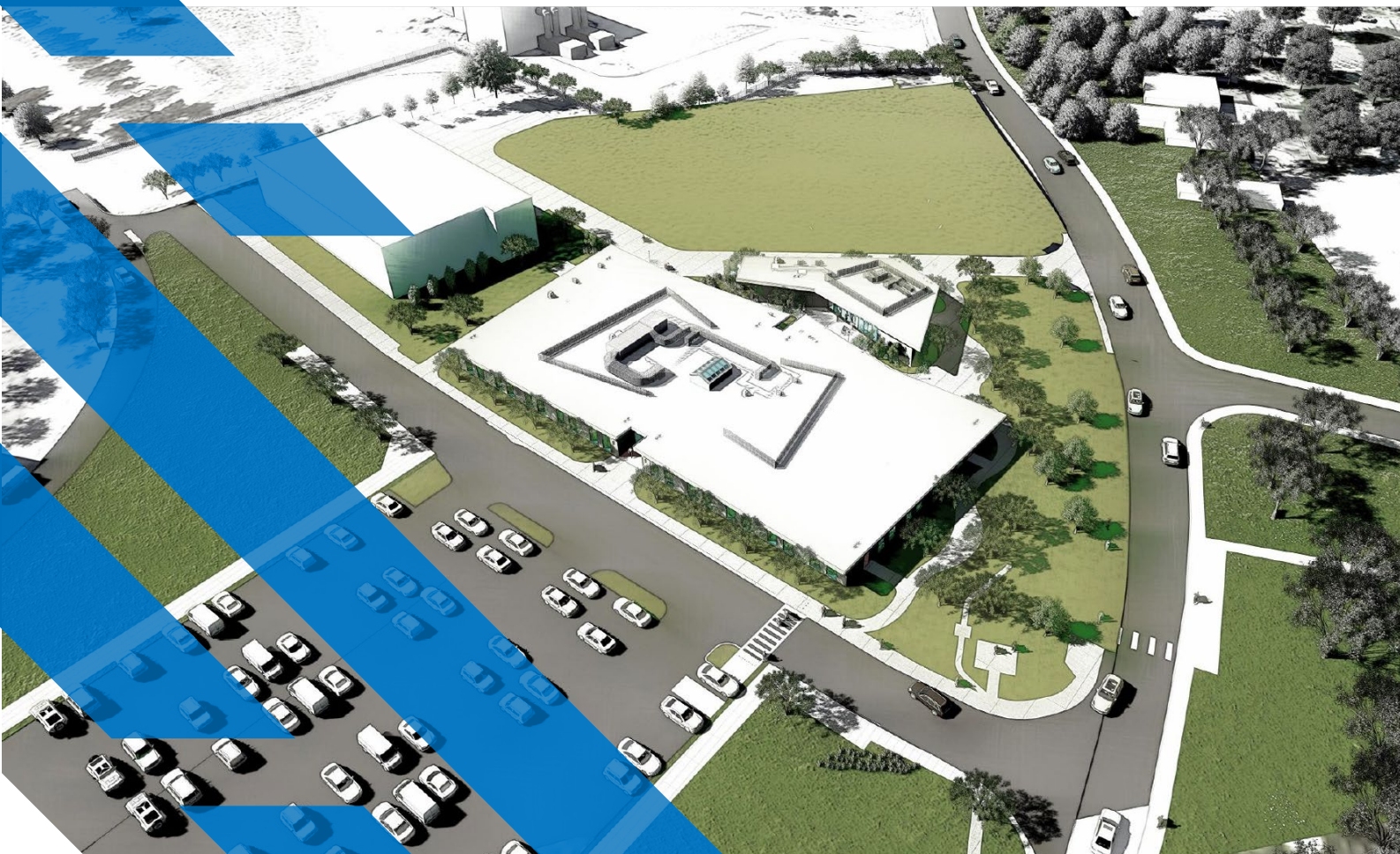


PROJECT PROFILE / **NEW OFFICE BUILDING**

# UPGRADING ESSENTIAL FACILITIES FOR TODAY'S DEMANDS

As national defense responses change over the years, the infrastructure that supports these operations must also evolve. To enhance performance and increase efficiencies, Lawrence Livermore National Security (LLNS) is adding a new office building to its campus.



# FAST-TRACK APPROACH DELIVERS SPEEDY RESULTS

Developing two separate design packages allows construction activities to start early while the final building design is being completed.

Lawrence Livermore National Security (LLNS) is tasked with creating an environment that supports LLNS's mission in STEM. This includes providing a user-friendly, convenient and comfortable office where engineers and scientists can come together in a collaborative environment while providing maximum flexibility and adaptability of floor plans for multiple institutional tenants with varying space needs.

Currently, collaboration between the private and public sectors is hindered due to security protocols that limit access into LLNS's campus. LLNS needs a space that allows for its scientists and private sector personnel to work collaboratively. The Livermore Valley Open Campus Project allows this collaboration to take place and frees up more space within the secured campus for more urgent, mission-critical-focused buildings.

The new 24,000-square-foot office building will include more than 100 executive and private offices, multiple conference rooms and collaborative spaces, a large and welcoming main lobby area, along with other building amenities. The exterior utilizes an insulated metal panel system with large fixed windows, a canted faux wood soffit and a large central skylight. Additionally, a separate conference annex is being designed and constructed to include a 2,800-square-foot conference center with a lobby, break room, utility rooms and storage. The conference center will have an occupancy of 100 people and can be subdivided into two conference areas. Each smaller conference area

has advanced audiovisual capabilities including 98-inch high-resolution displays, articulating cameras, and integrated speaker and microphone systems to allow the users to conduct video teleconferencing.

The juxtaposition of the building will create an outdoor collaborative area capable of supporting large gatherings and small intimate areas where staff can relax under drought-tolerant trees and landscaping. Sustainability measures have been incorporated into the design and construction, including enhanced building commissioning, renewables and 25% energy savings over ASHRAE 90.1 - 2010 baseline.

The design-build project is currently on track to achieve LEED Gold certification. Upon facility turnover, the new building will support LLNS's mission by providing more space for unclassified collaboration. RMW Architecture & Interiors is a partner on the project.

Lawrence Livermore National Laboratory is operated by Lawrence Livermore National Security, LLC, for the U.S. Department of Energy, National Nuclear Security Administration, under Contract DE-AC52-07NA27344.



Renderings by RMW Architecture & Interiors to include cover and article imagery.

## PROJECT STATS

### CLIENT

Lawrence Livermore National Security

### LOCATION

Lawrence Livermore National Laboratory, Livermore, California

# 27K

SQUARE-FOOT BUILDING

MORE THAN

# 100

OFFICES, CONFERENCE ROOMS AND COLLABORATIVE SPACES

DESIGNED AND BUILT TO

# LEED GOLD

SPECIFICATIONS