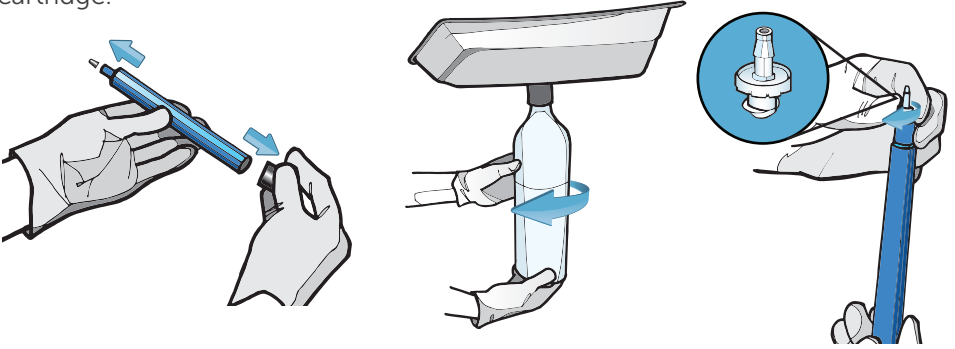


BluTube® Cartridge Installation:

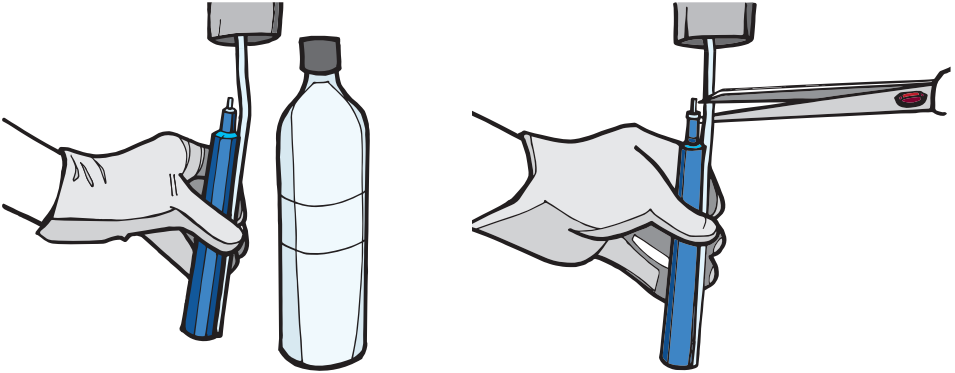
1. PREP

Practicing aseptic technique, remove the dark blue vinyl shipping caps from both ends of the BluTube cartridge. Then, remove the water bottle from the dental unit manifold and disconnect the dental unit water heating system if applicable. Twist on the female luer lock into the male end of the BluTube cartridge.



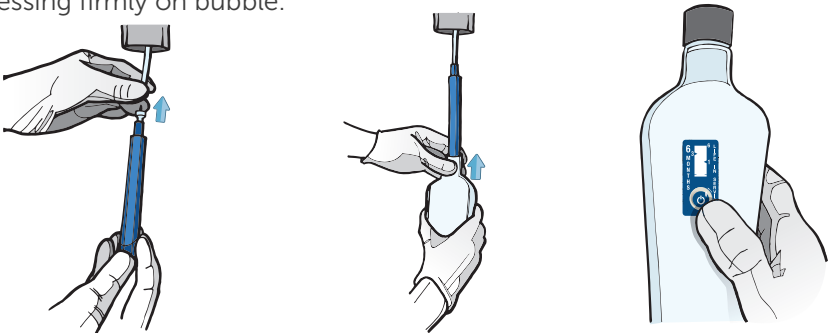
2. MEASURE

Place the BluTube and water bottle alongside the manifold uptake tube. Align the bottom BluTube near the bottom of the water bottle, allowing enough space (1/4") between them so the bottom of the BluTube will not touch the bottom of the bottle once installed. Then, cut the uptake tube at the top of the BluTube cartridge (not including the female luer lock).



3. CONNECT

Utilizing the luer lock, connect the BluTube to the cut end of the uptake tube. Reattach the water bottle to the manifold. Set the air pressure to 45psi. Operate the dental unit instruments until all air is purged from the water system. Flush cold tap water through BluTube cartridge for 1 minute. It is normal for discoloration during initial flush. Lastly, stick the 6-month replacement indicator on your water bottle or maintenance calendar. Activate by pressing firmly on bubble.



Quick Start Guide



Dental Unit Water Purification Cartridge

BluTube®

The Proven BluTube® Protocol:

1. SHOCK FIRST

Shocking your waterlines is using a strong disinfectant to clean your waterlines and is an important part of any treatment protocol. Visit ProEdgeDental.com/Shock to learn about product recommendations and review how-to videos.

- › Shock before installation of each BluTube 6 Month Cartridge.
- › Always shock when a water test results reveal 200-500 CFU/mL. Shock and retest when water test results reveal over 500 CFU/mL.
- › **Never shock through the BluTube cartridge** as this can damage the straw. Always shock with the dummy straw included and follow these steps:
 - a. Remove the water bottle.
 - b. Unscrew the BluTube from the quick connect fitting.
 - c. Attach included grey Dummy Straw by twisting the male quick-connect fitting into the female fitting (about a 1/2 turn is all it takes).
 - d. Complete shocking procedure provided by the shock solution instructions.
 - e. After shocking, reattach the BluTube. Make note of the installation date if starting with a new BluTube cartridge.

NOTE: *Dummy Straws are reusable. Store for your next shock.*

2. BLUTUBE® CONTINUOUSLY TREATS

Once you've installed the BluTube cartridge, it will continuously treat the water within your dental unit waterlines for up to 6 months. So relax, it's fighting the battle for you.

- › Empty water bottle each evening, wipe down the cartridge with a clean paper towel, and reattach bottle.
- › Refill with fresh water each morning.
- › Flush lines for 2 minutes to start the day and 20-30 seconds between patients.

3. TEST QUARTERLY

Testing waterlines ensures an effective protocol and provides dental practices protection with documentation of CDC compliance with the ≤ 500 CFU/mL standard. OSAP's best practices recommend this testing frequency:

- › Test water quality monthly to establish effectiveness of your treatment protocol.
- › If results indicate that water quality is acceptable for two consecutive months, the frequency of testing may be reduced, but should not be less than every three months.

Questions?

888.843.3343 | support@pro edgedental.com

