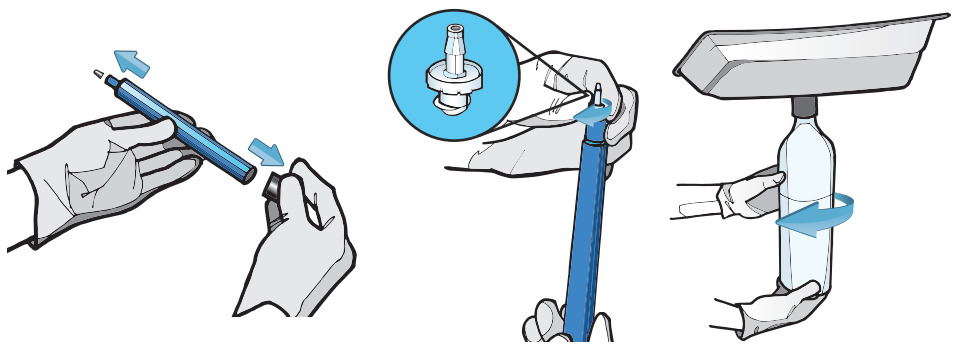


BluTube® Cartridge Installation:

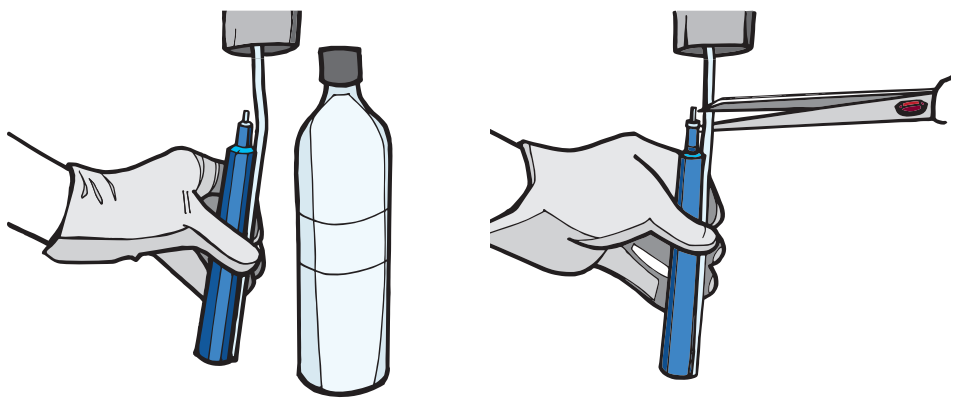
1. PREP

Practicing aseptic technique, remove the dark blue vinyl shipping caps from both ends of the BluTube cartridge. Then, attach the clear female luer lock to the BluTube cartridge. Remove the water bottle from the dental unit.



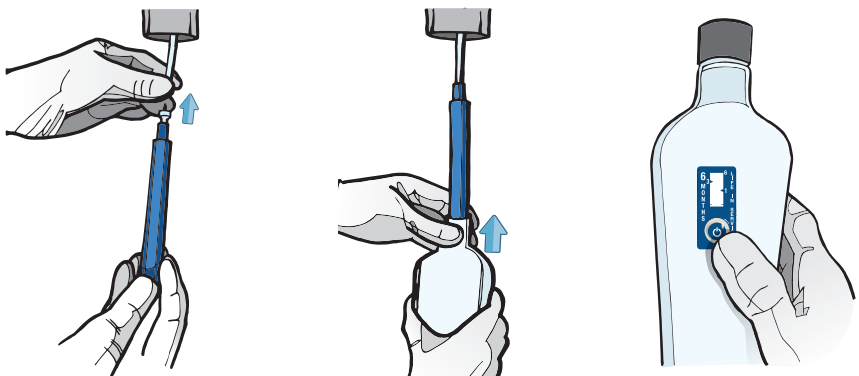
2. MEASURE

Place the BluTube and water bottle alongside the units uptake tube. When measuring, make sure there is approximately 1/4" between the bottom of the bottle and the BluTube cartridge. Then, cut the uptake tube at the top of the BluTube cartridge (not including the clear female luer lock).



3. CONNECT

Connect the BluTube to the uptake tube. Reattach the water bottle to the unit. Set the air pressure to 45psi. Flush cold water through the BluTube cartridge for 3-5 minutes. It is normal for water to have a slight tint during initial flush. Lastly, stick the 6-month replacement indicator on your water bottle or maintenance calendar. Activate by pressing firmly on bubble.



Using the 6-Month Replacement Indicator:

Remove adhesive tape and place the 6-month replacement indicator on your water bottle or maintenance calendar. Activate by pressing firmly on bubble. The white window bar will begin to turn red. At six months, the entire window bar will be filled with red, letting you know it's time to replace the BluTube cartridge.

Note: Replacement indicators can provide +/- 15% time accuracy. Use as a visual reminder, but rely on documented installation date of each cartridge and replace at 6 months or 120L of water usage.



Shortly After
Activation



1 Month



3 Months



6 Months:
Replace BluTube

Install Guide



The Proven Protocol: with BluTube®

1. Shock First

Shocking is using a strong disinfectant to clean your waterlines. Shocking is an essential part of any treatment protocol. Learn more at proedgedental.com/shock.

- Shock before installing each BluTube cartridge.
- Shock when a water test reveals 200-500CFU/mL. Shock and retest when a water test fails.

Never shock through the BluTube cartridge! This can damage the straw. Always shock with the **included dummy straw** and follow these steps:

- 1 Attach the white male luer lock to the gray dummy straw.
- 2 Twist off the BluTube from the clear female luer lock.
- 3 Connect the dummy straw to the clear female luer lock.
- 4 Shock per instructions for use.
- 5 Re-attach the BluTube cartridge. If you are using a new BluTube cartridge, take note of the installation date and use the 6-month replacement indicator.

REMEMBER: Dummy straws are reusable!

2. Treat Daily - With BluTube

Once installed, BluTube will continuously treat the water in your dental unit waterlines for up to 6 months. So relax, it's fighting the battle for you.

In the morning:

- Wipe down the outside of the BluTube cartridge.
- Fill the water bottle with cold, fresh water and reattach to the dental unit. Flush lines for 2 minutes to start the day and 20-30 seconds between patients.

End of the day:

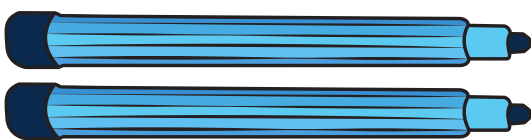
- Remove water bottle from dental unit carefully to avoid damaging cartridge. Empty water from the bottle.
- Reattach empty water bottle to unit.

3. Test Quarterly

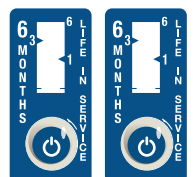
Testing is the only way to verify if your protocol is effective. It also serves as documentation to protect your practice. Start by testing monthly. If you have received passing results for two consecutive months, then quarterly testing is acceptable.

- Test using QuickPass® In-Office Water Test for a reliable economical solution.
- Test using Flo™ Mail-In Water Test for fast, reliable 3rd-party verification.

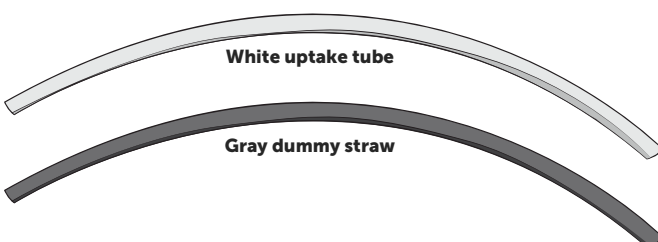
What's in the Box:



BluTube cartridges



6-month indicators



White uptake tube

Gray dummy straw



Clear female luer lock



White male luer lock