

# BluTube® Installation with A-Dec Dental Unit Water Bottles



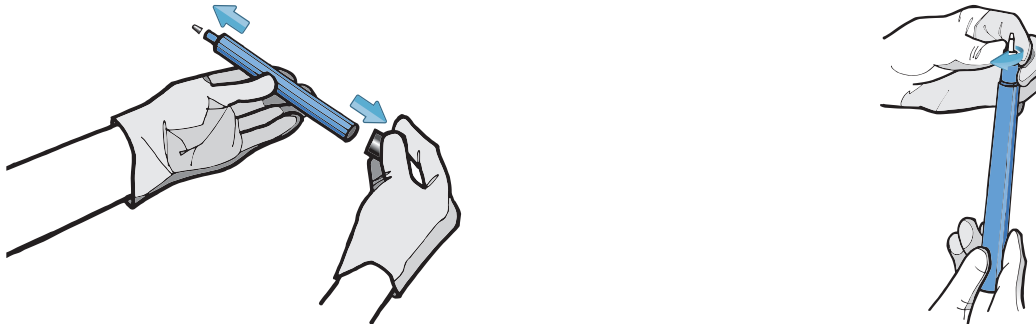
## 1. Disconnect

Practicing aseptic technique, remove the A-Dec bottle by lifting up 1 inch and turn 1/4 inch clockwise to release. Then take a 1/8 inch allen wrench and remove both screws from the collar. Separate the collar and lift the uptake tube from the bottle.



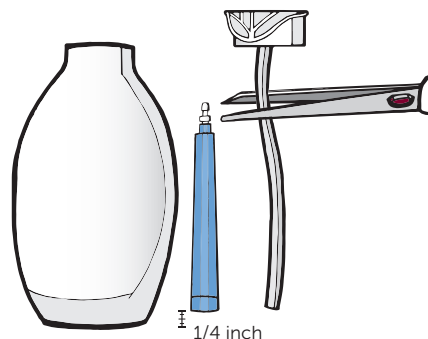
## 2. Prep

Take your BluTube® cartridge and remove the dark blue vinyl shipping caps from both ends of the cartridge. Then twist the female luer lock into the male end of the BluTube cartridge.



## 3. Measure

Place the BluTube and the uptake tube next to the A-Dec bottle. Align the BluTube to the bottom of the A-Dec bottle and then raise the BluTube 1/4 inch from the bottom of the bottle. Next, mark where the uptake tube meets the top of the BluTube cartridge (not including the female luer lock). Then, cut the uptake tube accordingly.

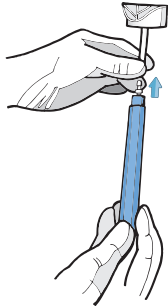


# BluTube® Installation with A-Dec Dental Unit Water Bottles



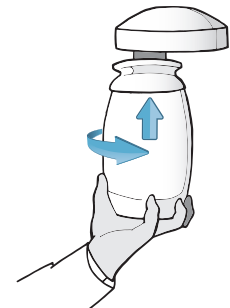
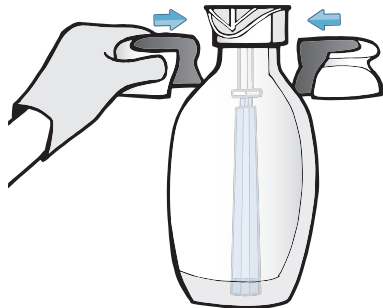
## 4. Connect

Utilizing the luer lock, connect the BluTube to the cut end of the uptake tube. Once the BluTube is firmly attached to the uptake tube, place the uptake tube and BluTube into the A-Dec bottle.



## 5. Reassemble

Locate the notches on the inside of the collar. Match the notches with the slight indentations on the bottle and uptake tube assembly. The collar should feel snug when pressed against the bottle and uptake tube assembly. If it still feels loose or you see gaps between the collar and bottle, try twisting the collar around until you feel the notches drop into the indentations in the bottle and uptake tube assembly. Then use your allen wrench to screw the collar back together. Lastly, lift the A-Dec bottle up one inch and turn counterclockwise to reconnect.



## 6. Flush

Flush cold tap water through BluTube cartridge for 1 minute. It is normal for discoloration during initial flush. Included with your BluTube is a 6-month replacement indicator, which you can choose to place on your water bottle or maintenance calendar. Activate by pressing firmly on the bubble.

