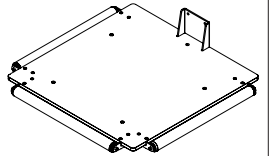
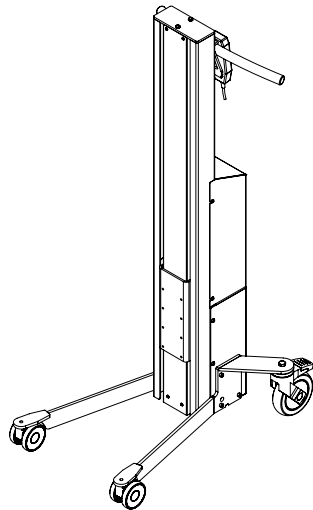
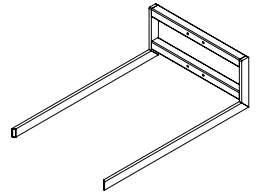
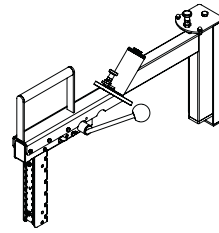


INOX 90 LIFTERS & TOOLS

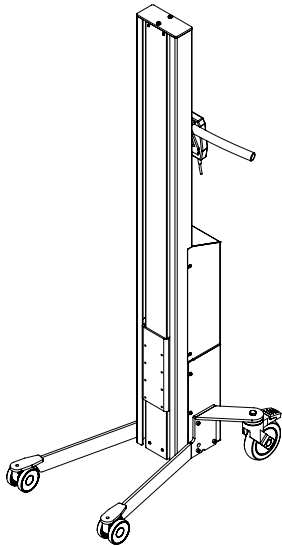
- DRAWINGS & MEASUREMENTS



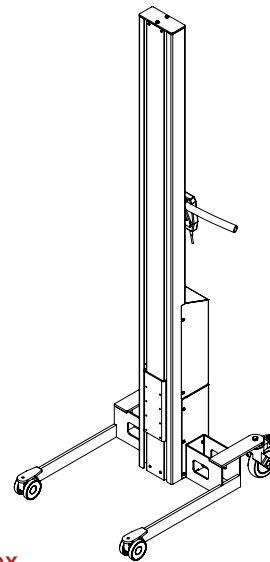
HOVMAND
LIFTING & MOVING TECHNOLOGY

INOX 90

3 MAST HEIGHTS OG 2 LEG TYPES



90 S/L/M Angled

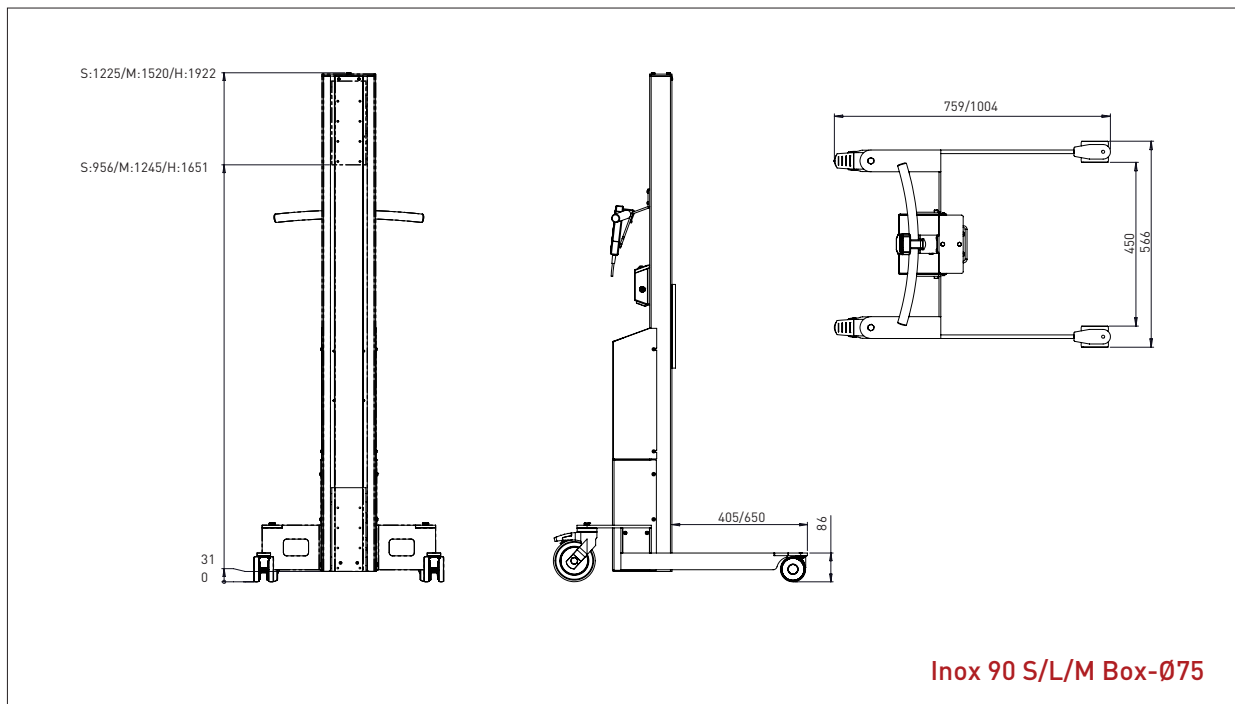
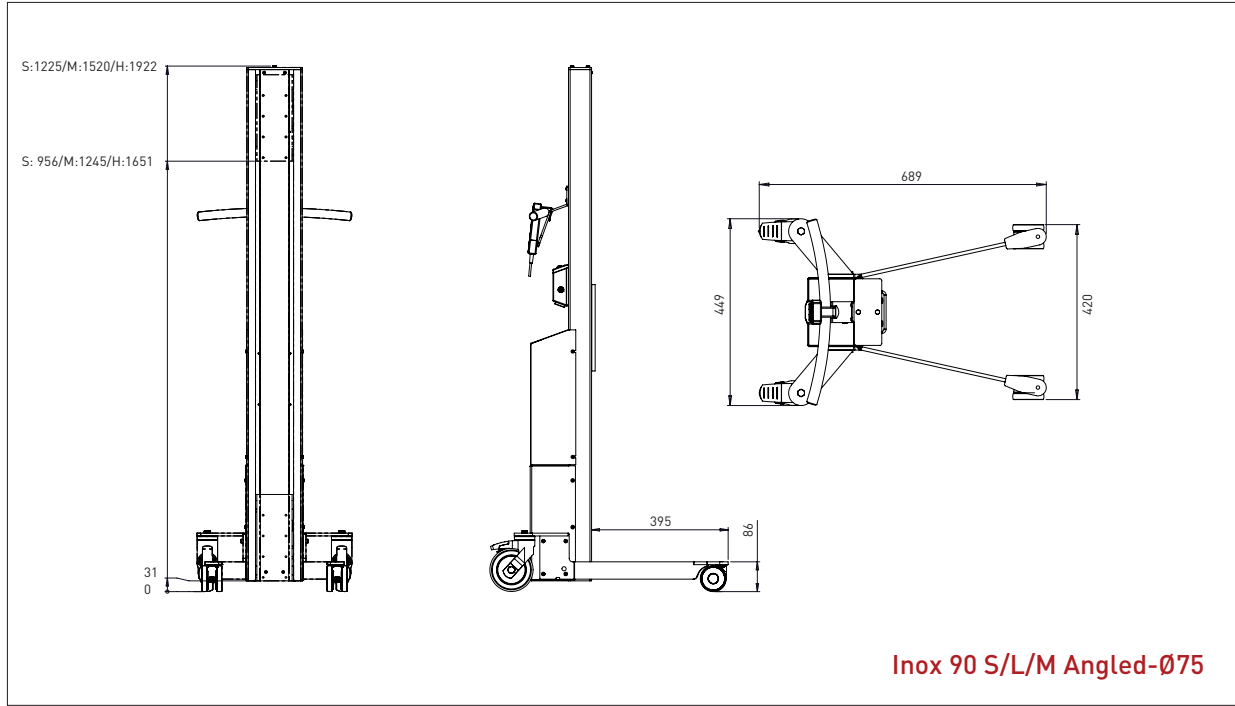


90 S/L/M Box

INOX 90

LIFTERS - DRAWINGS & MEASUREMENTS

- All measurements in mm



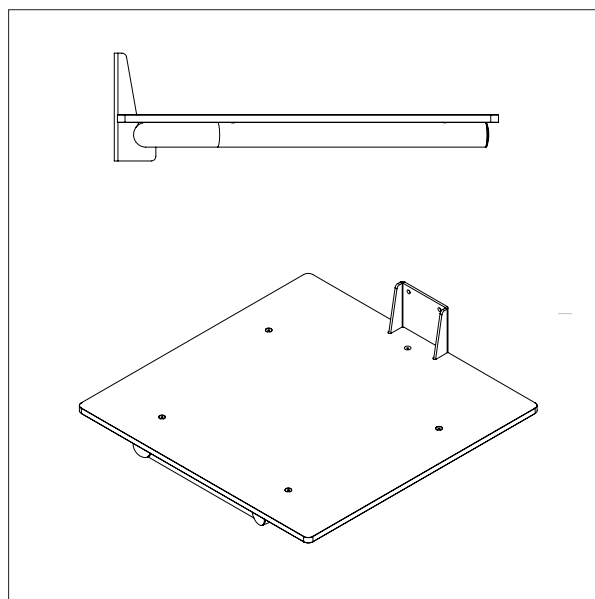
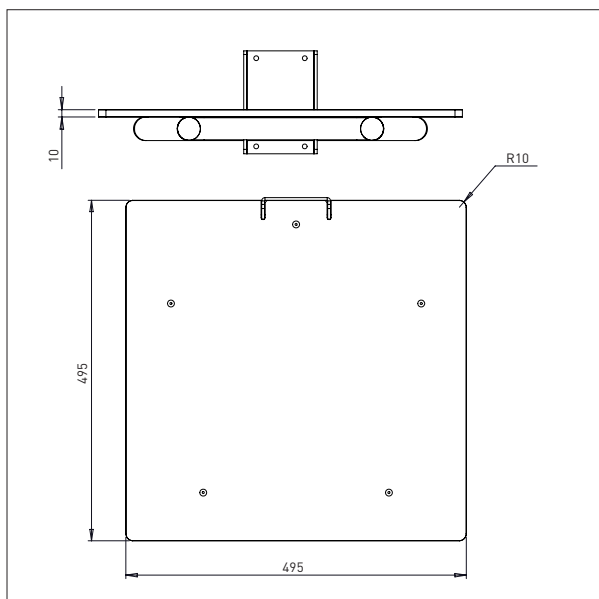
INOX 90 / TOOLS

PLATFORM PEHD

- All measurements in mm

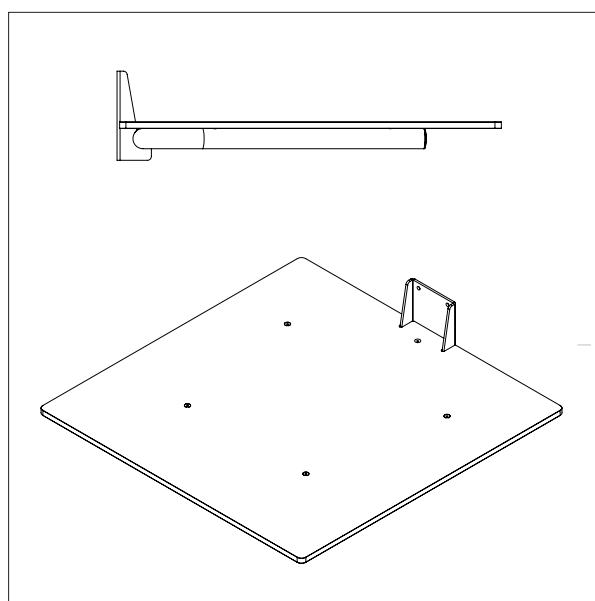
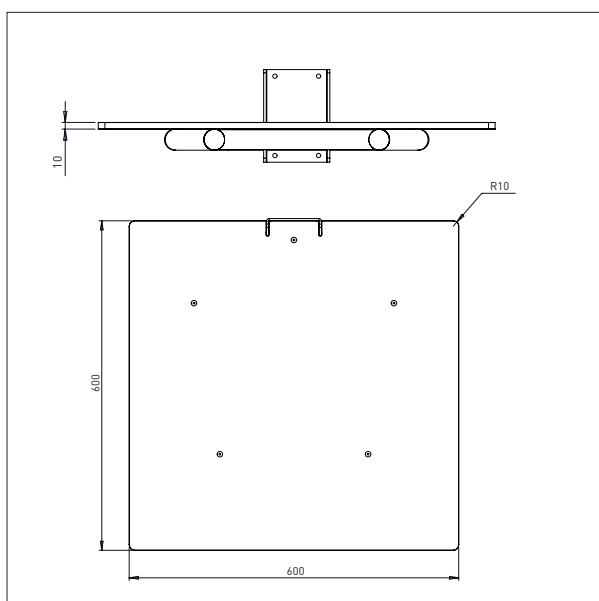
PLATFORM PEHD – KP1-ix

L x W: 495 x 495 mm



PLATFORM PEHD – KP2-ix

L x W: 600 x 600 mm



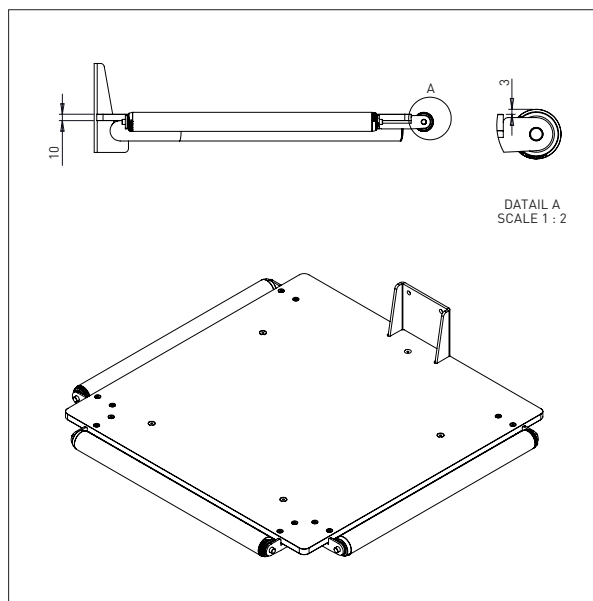
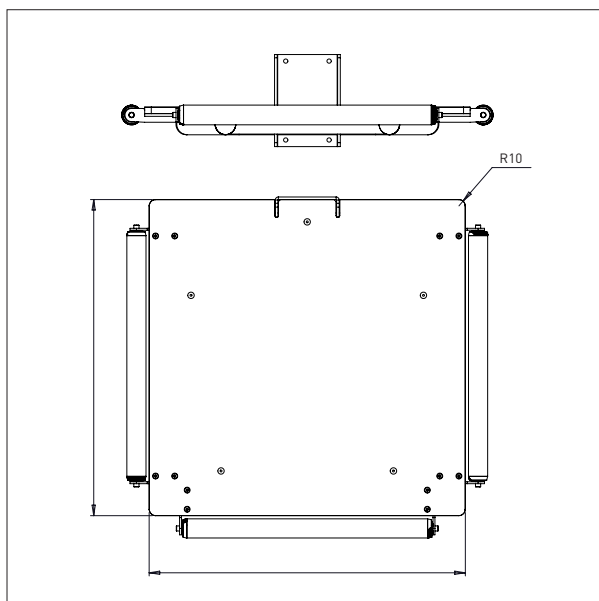
INOX 90 / TOOLS

PLATFORM PEHD WITH ROLLERS

- All measurements in mm

PLATFORM PEHD W/ROLLERS – KP3-ix

L x W: 495 x 495 mm w/rollers



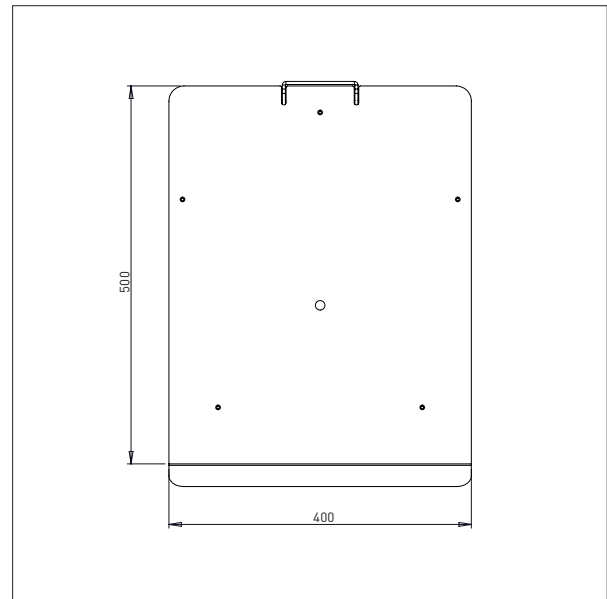
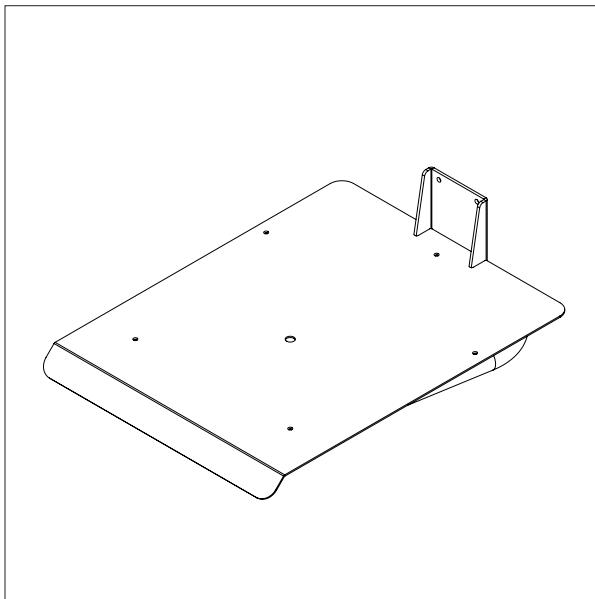
INOX 90 / TOOLS

PLATFORM STAINLESS

- All measurements in mm

PLATFORM STAINLESS – EP1-ix

L x W: 500 x 400 mm



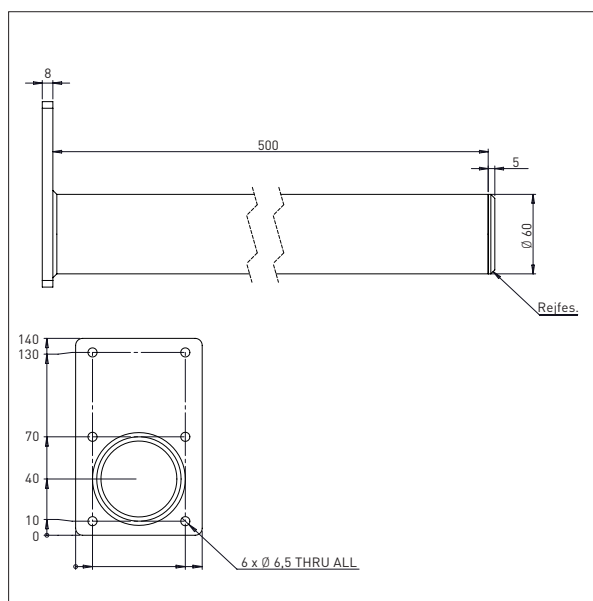
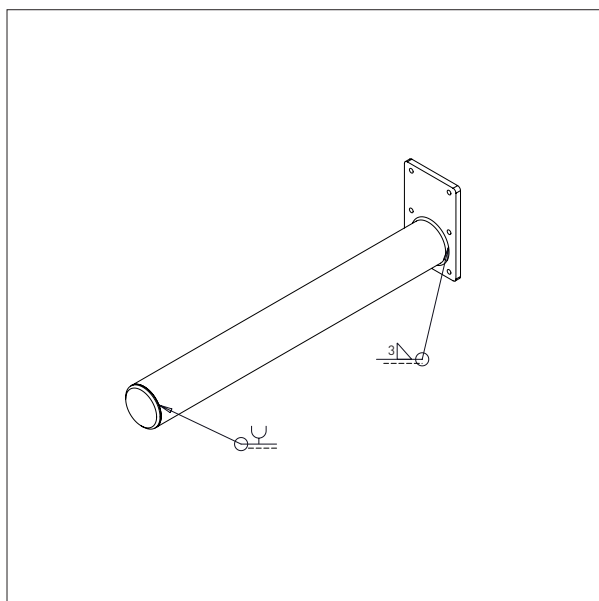
INOX 90 / TOOLS

BOOM

- All measurements in mm

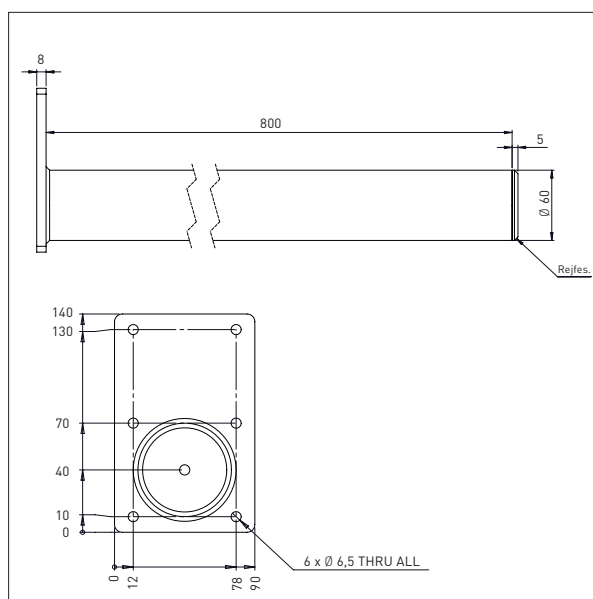
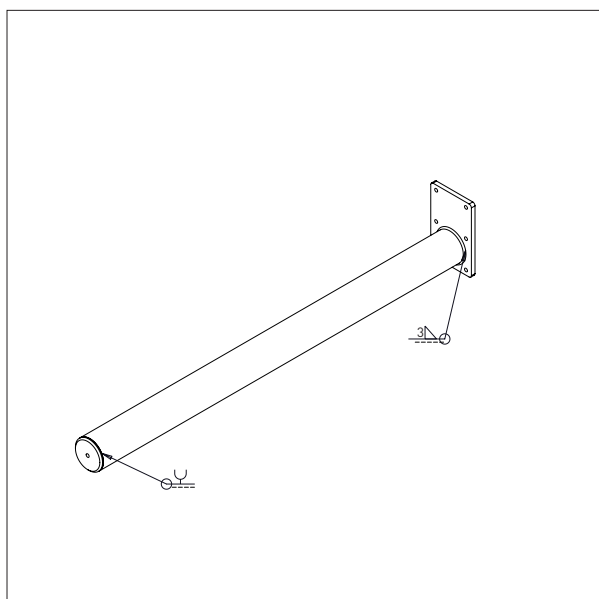
BOOM – D1-ix

L x Ø: 500 x Ø60



BOOM – D2-ix

L x Ø: 800 x Ø60



INOX 90 / TOOLS

DOUBLE BOOM

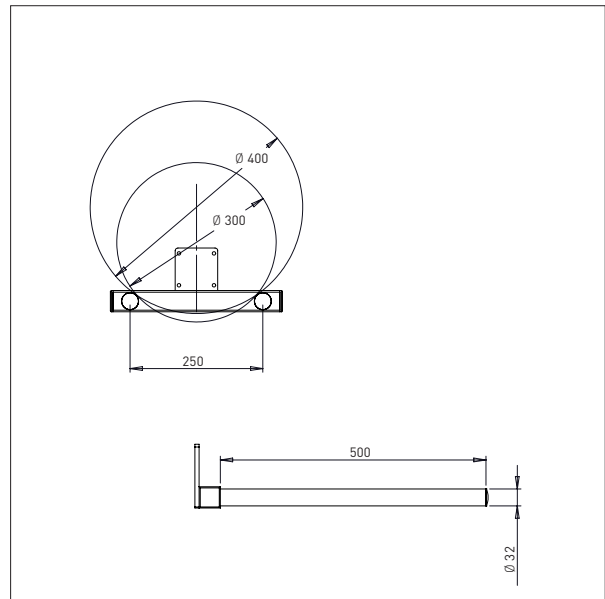
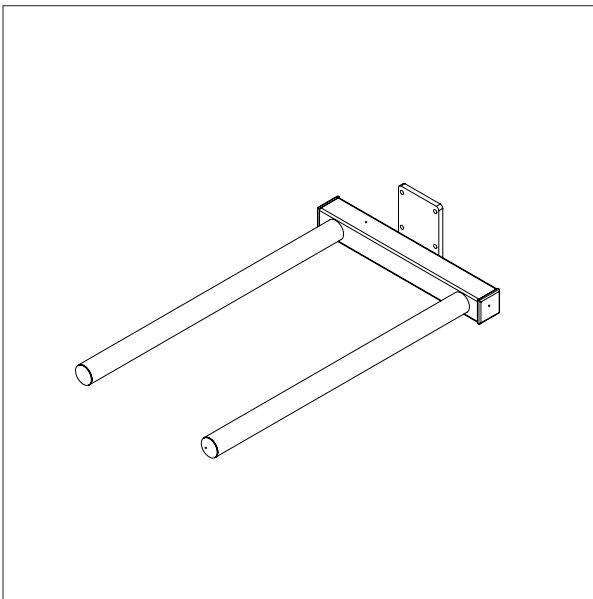
- All measurements in mm

DOUBLE BOOM – DD1

L x Ø x W: 500 x Ø30 x 250

Min. Width of reel: Ø300 mm

Max. Width of reel: Ø400 mm

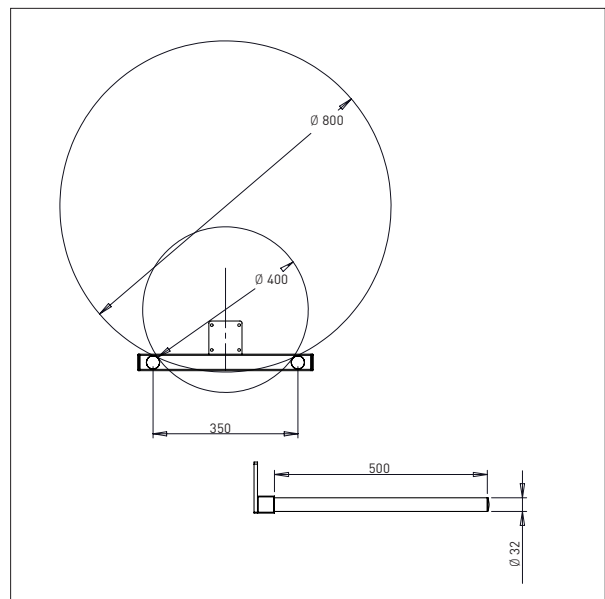
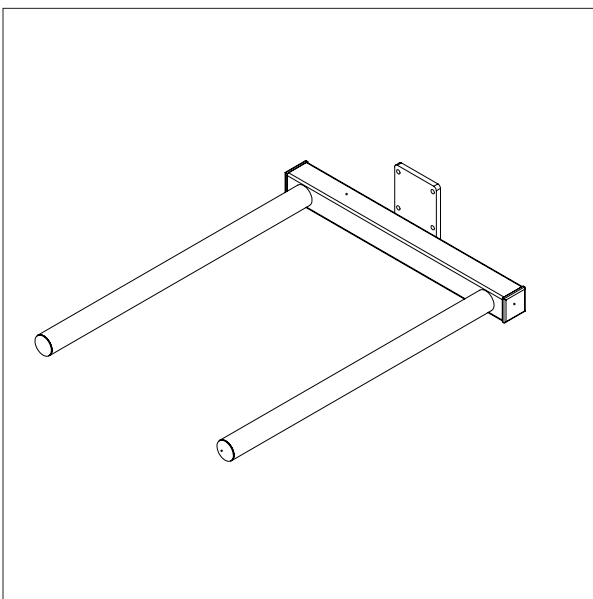


DOUBLE BOOM – DD2

L x Ø x W: 500 x Ø30 x 350

Min. Width of reel: Ø400 mm

Max. Width of reel: Ø800 mm



INOX 90 / TOOLS

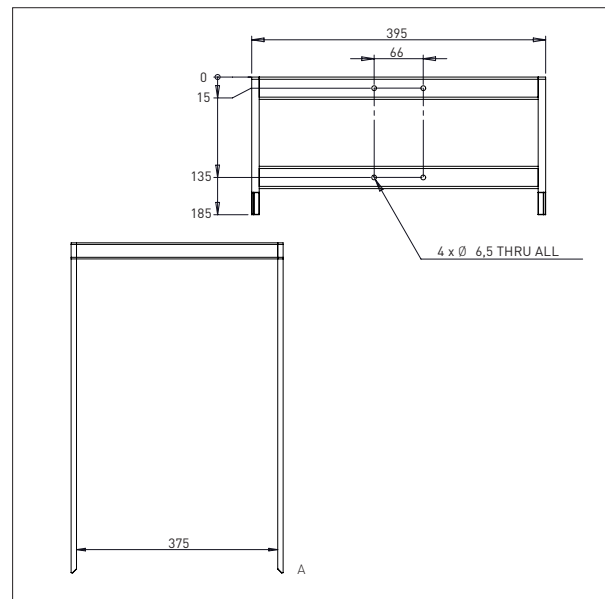
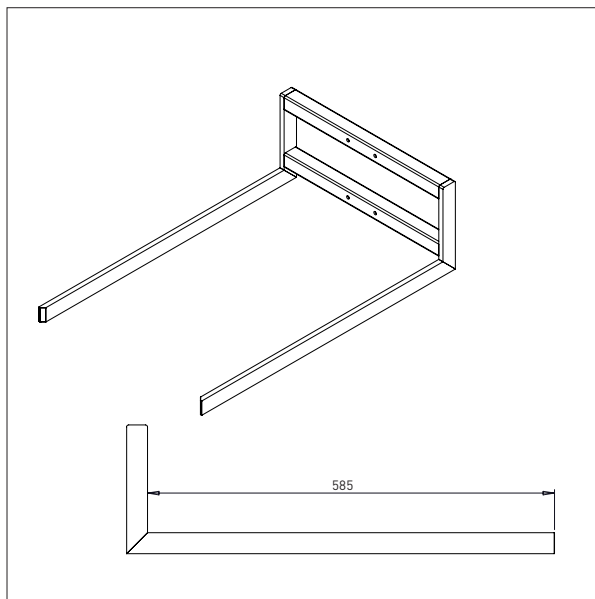
FORK

- All measurements in mm

FORK - G1-ix

L x W: 585 x 375

For 600 x 400 boxes

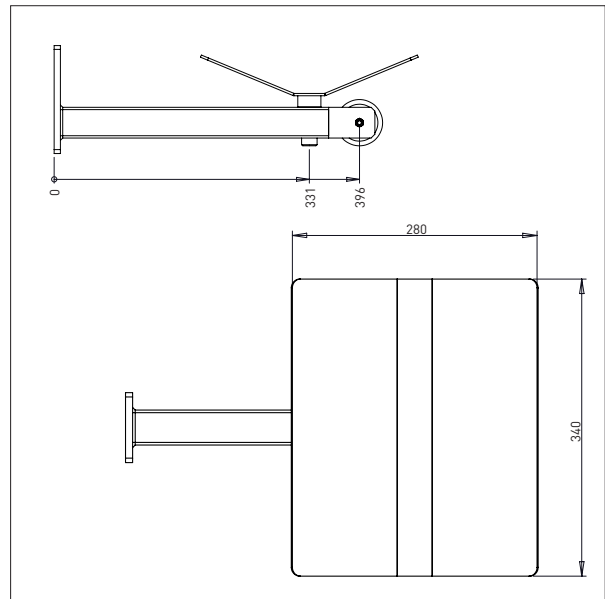
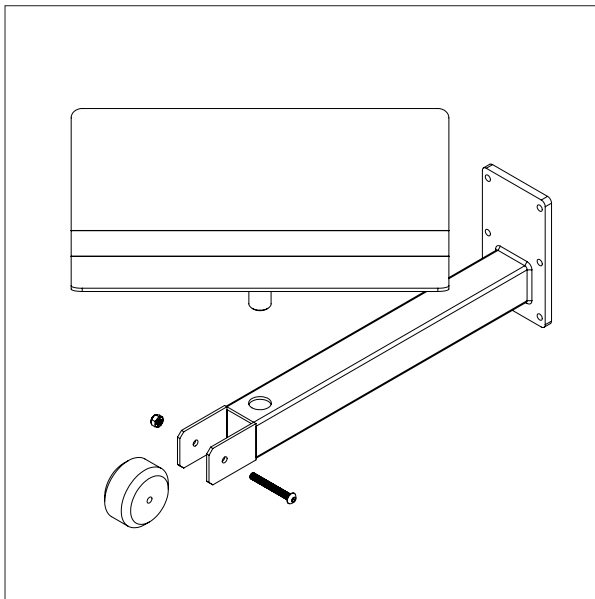


INOX 90 / TOOLS

BOOM + V-BLOCK

- All measurements in mm

BOOM + V-BLOK – DVB1-ix



INOX 90 / TOOLS

REEL MANIPULATOR

- All measurements in mm

REEL MANIPULATOR – MRP2

Manual

