

TENSOR

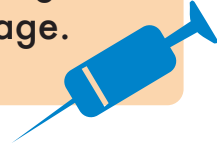
The smart way to monitor your environment.

The **Tensor** provides environmental and power monitoring along with smart plug control. Receive instant notification of problems with temperature, humidity, pressure, or electric power in your controlled environment. Continuous measurements are streamed wirelessly online for analysis or compliance purposes.

Applications for the TENSOR

MEDICAL

Temperature and power monitoring for refrigeration and medical storage.



GREENHOUSE

Climate monitoring for ensuring optimal growth conditions.



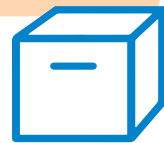
DISTILLERY/FERMENTER

Ingredient storage, fermentation, and aging condition monitoring.



STORAGE

Environmental monitoring for dry goods and sensitive materials and equipment.



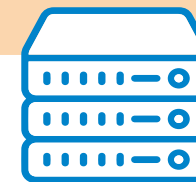
PHARMACY

Regulatory compliance for drug product storage.



SERVER ROOM

Outage, power quality, and temperature tracking and notifications.



...AND ANY OTHER CONTROLLED ENVIRONMENT

Features & Benefits:

- ➔ Adjustable power and environmental thresholds
- ➔ Instant e-mail & SMS alerts
- ➔ Cloud based data collection & analytics
- ➔ Wireless monitoring and smart plug control
- ➔ Advanced power quality: transient capture, harmonics, flicker, and ITIC triggering



The TENSOR vs Other Products

The Tensor includes either **WiFi** or **LTE** connectivity, remote access to real-time and historical data, and receptacle power control. Identify faulty equipment, spot power and environmental problems, and control loads from your web browser.



The Tensor sends immediate alerts for temperature, humidity, pressure, or power quality issues. Notifications come straight to your cell phone or e-mail, allowing you to quickly respond to the problem.



(800) 296-4120
www.powermonitors.com



TENSOR

The smart way to monitor your environment.



Tensor Product Specifications:

INPUTS	AC Voltage	80-140 V RMS 0-75 V RMS neutral-ground	SAFETY	150 V CAT II, UL Listed, UL 60730-1/ CSA E60730-1, Indoor use only, Max load 1875VA		
	AC Current	0 to 70 A (15 amps continuous)		COMMUNICATIONS	Cell Modem or WiFi	
	Sample Rate	256 samples/cycle			INFORMATION STORAGE	Data Storage
CHANNELS	Voltage	2 channels	RECORD SETTINGS	Interval Graphs		1 cycle to 4 hour interval, user selected, stop-when-full or wrap- around memory modes
	Current	1 channels		Significant Change	1 V to 8 V in 1 V steps	
BASIC MEASUREMENTS	RMS Voltage	Volts	Flicker Settings	User-defined, or conform to IEEE 1453/ IEC 61000-4-15, and IEEE Std. 141		
	RMS Current	Amps	Waveform Capture	Voltage and current threshold, periodic capture, waveshape, event cross triggers		
	Real Power	Watts		CBEMA/ITIC	Triggered event capture	
	Apparent Power	VA	POWER SUPPLY REQUIREMENTS		Voltage	70-140 VAC Line to Neutral (47-63 Hz)
	Reactive Power	VARs		Power Consumption	4 Watts max	
	Power Usage	kWh, kVARh, kVAh		ENVIRONMENTAL	Temperature	5° C - 60° C
ADVANCED POWER	Phase Angle	Degrees			Pressure	500 - 1100 hPa
	Power Factor	Watts/VA	Humidity	10 - 95% RH		
	Displacement PF	cos (phase angle)	PHYSICAL DIMENSIONS	Size	4.9" L x 2.7" W x 1.25" H	
ACCURACY	Voltage	0.50% of full scale		Weight	0.5 lbs	
	Current	1.0% of full scale	POWER FAIL OPERATION	The recorder can operate without any input voltage for up to 1 minute.		
	Power	1.0% of full scale		HARMONICS	Voltage	to the 51st
	Phase Angle	1.0°			Current	to the 51st
	Power Factor	±0.02			Measures	Magnitude, phase, THD
Displacement PF	±0.02					

Customize the TENSOR to suit Your Needs:

STANDARD TENSOR

- Basic power monitoring
- Full environmental monitoring

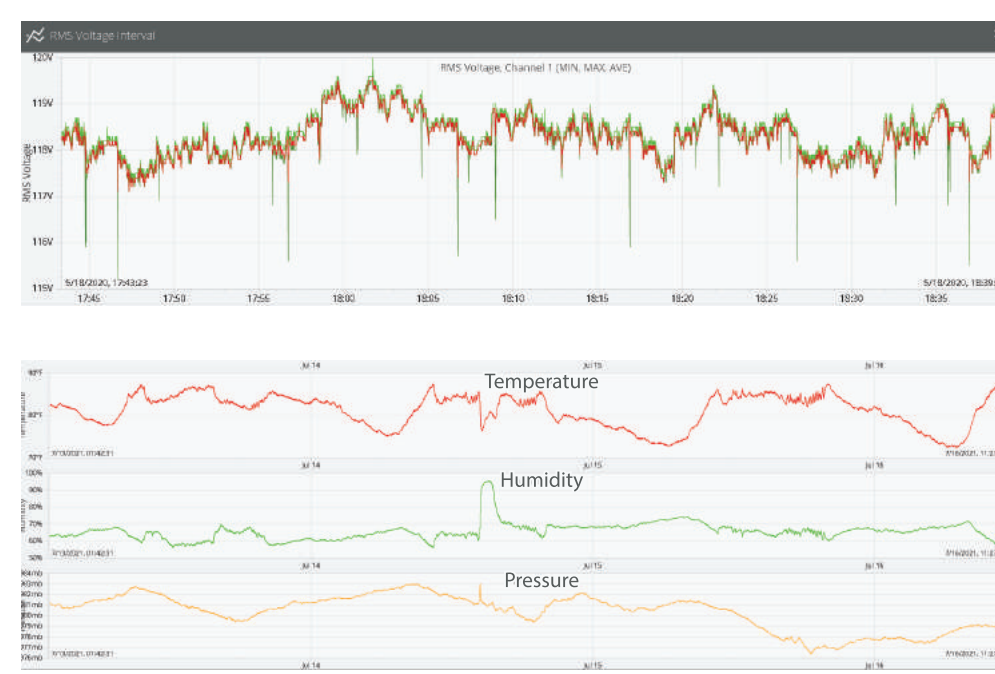


PQ TENSOR

- Standard Tensor features
- Advanced power quality



Both equipped with Wi-Fi or LTE connectivity.



pqcanvass

Cloud-based Monitoring

- Use a web browser to track your entire controlled environment
- Access powerful graphing tools to spot trends and problems

Live Data and Event Notifications

- Programmable email and text message alerts for voltage, power, and environmental threshold exceedences, outages, or other events
- View real-time data anywhere with a web browser

Applications

- Regulatory compliance reports
- Power quality troubleshooting
- Critical environmental monitoring
- Instant notification of issues

Event

07-17-2021 06:23:05 EDT

Device Label Tensor 53607 Home

Device Serial Number Voltage Percentage

Type 53607



PMI - Tools you need, people you trust.

Power Monitors, Inc. is an industry-leading product design and manufacturing firm based in Mt. Crawford, Virginia. Beginning in **1987**, PMI set out with the goal to solve power quality problems by listening to our customers and working with them to design and manufacture products to suit their needs. Total customer satisfaction is our goal: we offer **24/7 technical support** and extensive educational material.