

## Translational Tissue Biomarker Services

### Comprehensive Tissue-based Solutions to Streamline Drug Development

Invicro provides end-to-end translational research and clinical trial pathology services for biotechnology and pharmaceutical partners. We collaborate with sponsors to design studies that will provide biological insights needed to advance drug discovery and development efforts. From core histology and simple immunostains, to more complex and custom assays, we possess the scientific, regulatory and operational expertise to support projects across all phases and therapeutic areas.

## SERVICE OFFERINGS



### Operational Expertise

- Sample acquisition
- Regulatory support
- IVD kit development support



### Sample Preparation

- Specimen grossing
- Tissue processing / embedding
- Tissue microtomy



### Custom Assay Services

- Assay development, optimization and validation
- Multiplex development
- Assay transfer



### Immunohistochemistry

- Single and multiplex assays
- Chromogenic and fluorescent detection
- Quanticell™: High sensitivity, quantitative IHC
- In-house, routine markers



### ISH / FISH

- RNAScope® ISH, FISH
- Automated, manual stains
- Multiplexed assays



### Whole Slide Imaging

- Brightfield
- Multiplex chromogenic and fluorescent



### Data Reporting

- Pathologist scoring
- Quantitative image analysis
- Digital biomarker development

## APPLICATIONS

- Identify novel drug targets
- Interrogate multiple target antigens in a single tissue section
- Profile immune cell phenotypes while maintaining tissue morphology
- Combine IHC with ISH/FISH for gene and protein co-expression analysis on a single slide
- Build predictive response profiles for biological therapies (e.g. monoclonal antibodies, antibody-drug conjugates, bispecifics, etc.)



**Clinical  
Laboratory  
Improvement  
Amendments**

### Our Scientific Approach to Support Your Project Needs

From study design, sample preparation and data acquisition to image analysis, Invicro's pathology solutions empower clinical researchers to find answers they seek. We are committed to helping you uncover novel insights to advance your scientific research.

#### STUDY DESIGN



#### SAMPLE PREPARATION



#### TISSUE STAINING

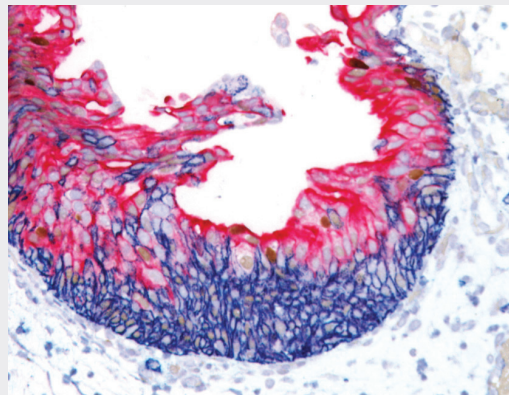


#### IMAGE ANALYSIS & REPORTING



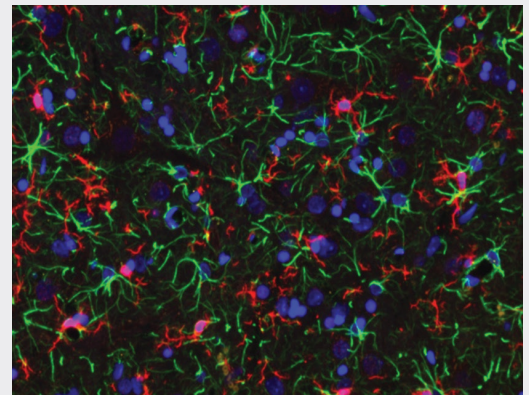
### Visualize More Biomarkers in Tissue While Preserving Spatial Context

*Multiplex, Chromogenic*



CD44 (Blue) + p53 (Brown, nuclear)  
+ CK20 (Red)

*Multiplex, Fluorescence*



DAPI (Blue) + GFAP (Green),  
+ Iba-1 (Pink)

### Platform Agnostic Service Capabilities

Invicro has deep scientific expertise to support projects on all major staining platforms. Our laboratories are equipped with the Leica Bond, Biocare IntelliPATH FLX® and VALENT®, Dako Autostainer Link 48 and Ventana DISCOVERY ULTRA.

