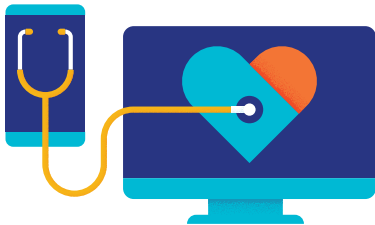


Hello there. Thanks for being a member.

Here's your health plan ID card. Before tucking it into your wallet, make sure all the information is correct. If you need to make a change, call the toll-free member phone number on the card and let us know how we can help.

Three ways to help you get the most out of your plan



1 Let's connect online

Register on myuhc.com[®]—your personalized member website—and download the UnitedHealthcare[®] app for quick access to:

- See what's covered.
- Check your plan balances.
- View your ID card and more.

2 Say hello to ways to save

Staying in the network is one way you can help keep costs in check—and visiting an out-of-network provider could end up costing you a lot more. To find a network provider:

- Visit myuhc.com > **Find Care & Costs**.

3 Pick a network PCP

Although your plan may not require you to choose a primary care provider (PCP),* it's a good idea to have one. Your PCP knows your history and can help guide you on the best path of care. To choose a network PCP:

- Visit myuhc.com > **Find Care & Costs**.
- Call the toll-free phone number on your ID card.

* Depending on your health plan, selection of a primary care physician may be required.

Members can access average cost data online or on the mobile app. None of the average costs are intended to be a guarantee of your costs or benefits. Your actual costs may vary. When accessing average cost data, please refer to the Website or Mobile application terms of use under Find Care & Costs section.

The UnitedHealthcare[®] app is available for download for iPhone[®] or Android[®]. iPhone is a registered trademark of Apple, Inc. Android is a registered trademark of Google LLC.

Oxford insurance products are underwritten by Oxford Health Insurance, Inc. Oxford HMO products are underwritten by Oxford Health Plans (NJ), Inc. and Oxford Health Plans (CT), Inc. Administrative services provided by Oxford Health Plans LLC.

B2C EI20367976.0 10/20 USP © 2020 Oxford Health Plans LLC. All Rights Reserved. 20-367977-B

This card is for identification only. It is not proof of membership and it does not guarantee coverage.