

# LODGIC WORKPLACE<sup>SM</sup>

MADISON ▶

*Let your work **thrive.***

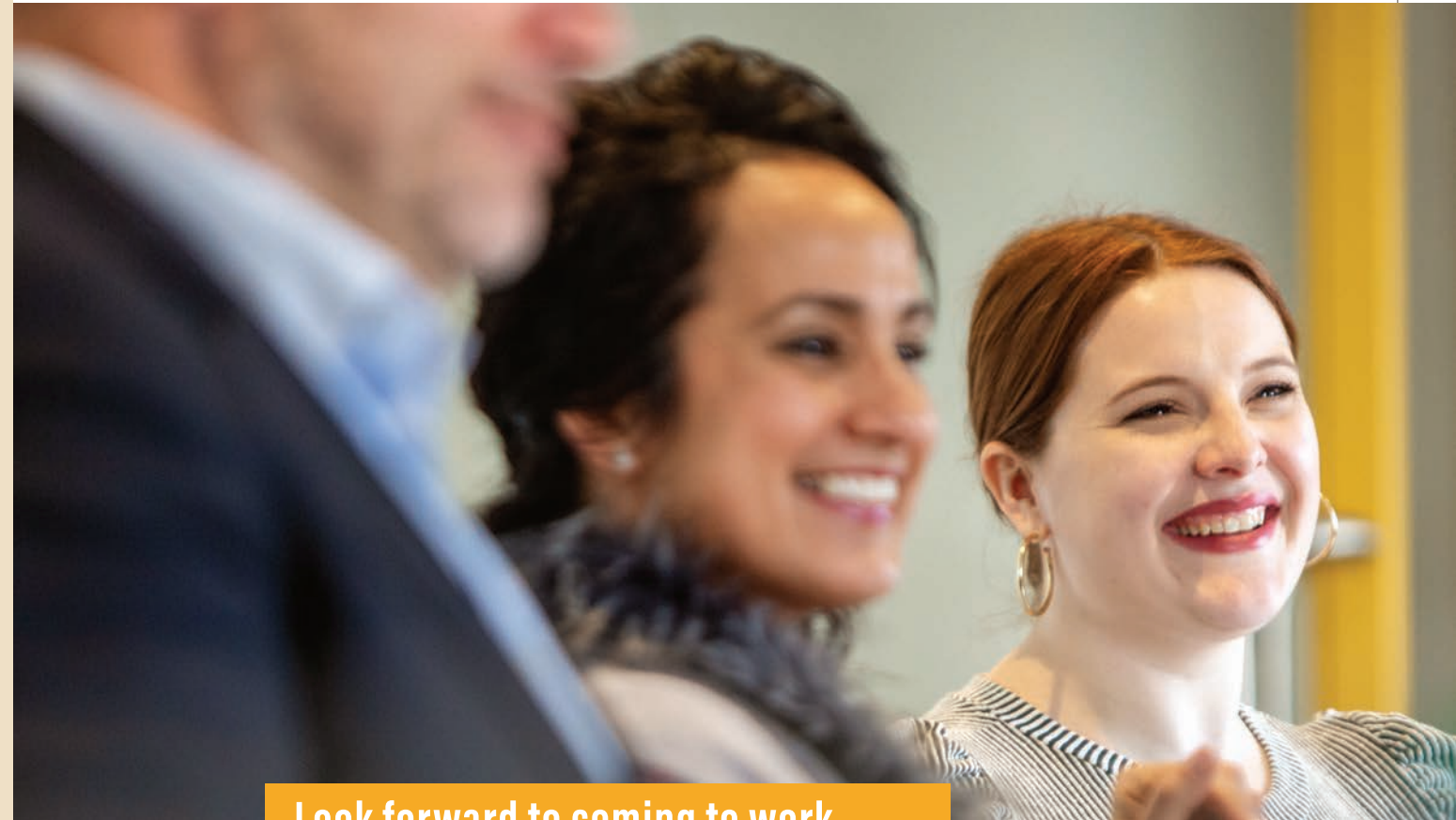




# Focus on what you do best. *We'll do the rest.*

**Welcome to Lodgic Workplace Madison, where great work thrives.** We've elevated the workplace experience and eliminated the distractions and headaches of day-to-day office management that so often bog down independent professionals and growth-oriented small businesses. Now, you can channel all of your energy into the things that matter most to you and your business.

*Discover a whole new way to work at Lodgic Workplace.*



## Look forward to coming to work.

Enjoy best-in-class business support services, an active calendar of professional and social events, an instant peer network, and all the perks of your favorite coffeehouse in one creative, productivity-enhancing environment.



### ELEVATE YOUR WORKSPACE.

Enjoy 24/7 access to a state-of-the-art, sophisticated, high-tech work environment and all of the amenities, business support services, and creativity that come with it.



### FIND YOUR PLACE TO FLOURISH.

Join our community and you'll expand your professional network immediately, boost your productivity and happiness, and host clients, partners, and meetings in style.



### ENJOY AN ALL-INCLUSIVE EXPERIENCE.

Big or small, you get it all. All membership plans enjoy the same amenities, services, support, and events for one simple monthly price – no long-term commitments required.

# Enjoy the ease of a *full-service environment.*

Our Workplace Concierge team is here to manage your business necessities and provide best-in-class hospitality so you can have the freedom and flexibility you need to focus on the things you're most passionate about. We sweat the details so you don't have to.



## Hospitality at every turn.

Each of our membership plans include these and other premium amenities, services, and support for one simple, all-inclusive monthly price – no long-term commitments required.

### **BOTTOMLESS ARTISAN COFFEE SERVICE.**

Other beverage options include reverse osmosis filtered still and sparkling water and hot water spigot.

### **GRAB-AND-GO NUTRITION.**

Nosh on morning cereal or pastries and all-day individually packaged snacks made in our kitchen.

### **DIRECT-TO-DESK FOOD & BEVERAGE SERVICE.**

Have breakfast, lunch, snacks, or even late-day cocktails or dinner delivered to your office or meeting room through your personal mobile device.

### **MEMBER MINGLES.**

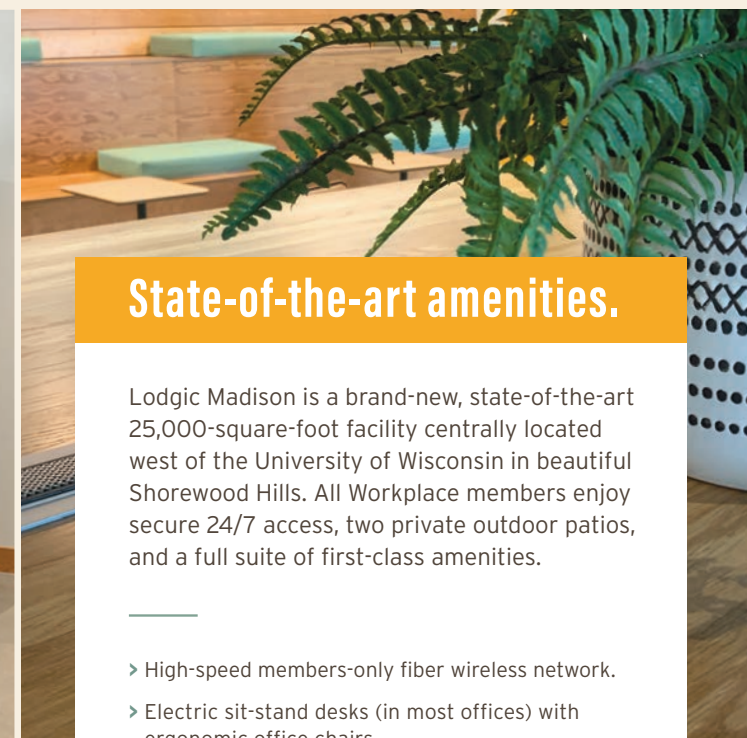
Attend weekly hosted happy hours featuring beer and wine as well as delicious chef-prepared snacks.

### **MEMBERS-ONLY PRIVILEGES.**

Enjoy your exclusive 10% discount off all food & beverage purchases, including Everyday Kitchen, Direct-to-Desk service, and Lodgic Events.



**Inquire with your  
Workplace Concierge  
about our full menu of  
Direct-to-Desk offerings.**



## State-of-the-art amenities.

Lodgic Madison is a brand-new, state-of-the-art 25,000-square-foot facility centrally located west of the University of Wisconsin in beautiful Shorewood Hills. All Workplace members enjoy secure 24/7 access, two private outdoor patios, and a full suite of first-class amenities.

- High-speed members-only fiber wireless network.
- Electric sit-stand desks (in most offices) with ergonomic office chairs.
- Key-locked cabinets for office and dedicated desk members.
- Private phone and video booths.
- Generous meeting room hours, bookable online.
- State-of-the-art audiovisual equipment and technical support.
- Free color and black-and-white printing.
- General office supplies.
- Mailboxes and/or disinfected mail and package service to your desk or office.
- Private wellness room with refrigerator, soft seating, and pull-up desk.
- Accessible showers in Workplace restrooms.
- Single-use toiletries provided.
- Adjacent to the commuter bike path.
- Underground weather-protected parking and bicycle storage (first come, first serve).
- Exterior bicycle racks.

# Elevate your business. *Accelerate your productivity.*

Lodgic Workplace was designed and built with independent professionals and growing small businesses in mind. Come to work in a place where you'll feel safe, confident, supported, and inspired every day. Enjoy hosting clients and coworkers in a beautiful, tech-smart environment that will enhance your brand and amplify your creativity, connectivity, and productivity.



## Cowork confidently.

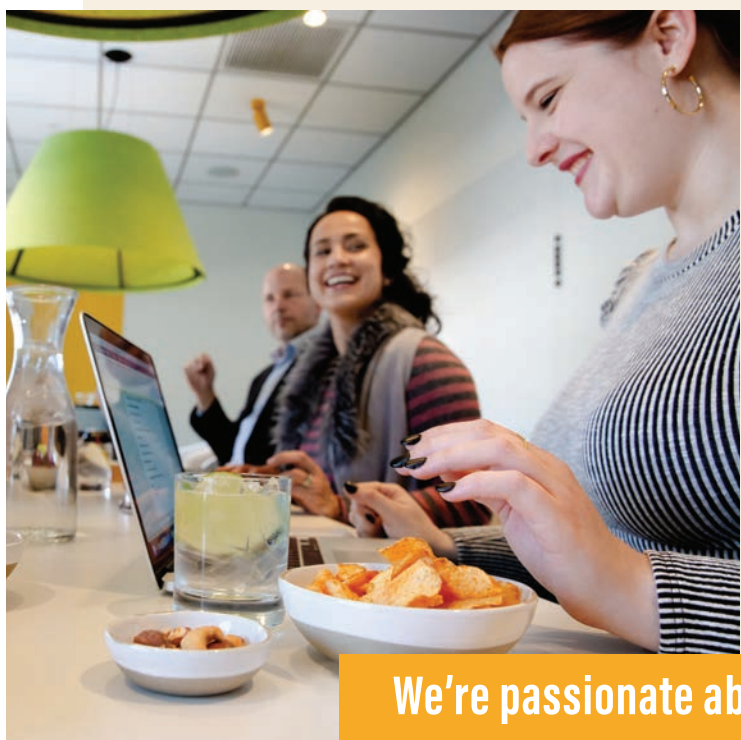
We take your safety and ours seriously. We're committed to thorough and continuous cleaning and **hospital-grade sanitation** services throughout the day, every day.

We've installed new state-of-the-art air **filtration systems with HEPA filters** for optimal air exchange to combat allergens, germs, and pollutants.

We provide **24-hour secured Workplace access** and a hosted guest reception desk during business hours. Every member can download a keyless entry app to their personal mobile device.

Read the full statement on how we provide a low-risk experience for our members, guests, and staff during COVID-19 and beyond.

**LODGIC.ORG / COVID-19**



# Harness the power *of community.*

When you become a member of Lodgic Workplace, you'll find yourself part of an enriching and enjoyable community of independent professionals, small business leaders, and entrepreneurs from all walks of life, but with a shared mindset focused on thriving. You'll be amazed by the ideas and connections that result from setting up shop in this creative, collaborative environment.

## We're passionate about community.

We love facilitating opportunities for our members to amp their businesses, grow their professional networks, learn new skills, and make new friends. Create valuable connections, showcase your business, expand your learning, and have fun doing it at Lodgic Workplace.

### FULL CALENDAR OF EVENTS.

Attend a variety of learning, networking, wellness, and social events.

### WEEKLY HOSTED HAPPY HOUR.

Network with other professionals while enjoying a selection of beer, wine, and chef-prepared snacks.

### NATIONAL ACCESS.

Visit and cowork at other Lodgic Workplace locations opening across the US (in the open coworking area). Contact the location directly if you need to book a meeting, or ask your local Workplace Concierge for assistance.



**Interested in teaching a class, hosting a lunch-and-learn, or otherwise meeting our community?**

Email us at  
**[coworking.madison@lodgic.org](mailto:coworking.madison@lodgic.org)**



## Don't just "have meetings." *Create experiences.*

Our meeting rooms are beautifully furnished with high-tech video and audio-conferencing capabilities, white boards, ambient music when you want it, and on-call food & beverage service. Let us handle the details for your in-person or virtual event while you shine in front of your clients, partners, and guests.



### *Host your meetings in style.*

- › Meeting rooms for 2 to 10 people.
- › Start-to-finish hospitality and technology support.
- › Full access to breakout spaces and furnished outdoor patios.
- › Two creative event spaces and expert event coordination available for presentations, conferences, board meetings, team-building sessions, professional mixers, and more for up to 100 attendees.



### *When it comes to food, we deliver.*

**Don't get up if you're on a roll – we'll come to you.** Enjoy the convenience of full-service food & beverage delivery from Everyday Kitchen to your office, meeting, desk, or landing spot whenever you want, early or late.

You can pre-arrange food service or satisfy an in-the-moment craving via our online portal. Or our concierge will be happy to place your order.



# Find your perfect place in our productive space.

Whether you're a solopreneur or have a team that needs a home base, we have an option to fit your needs and budget. Every membership enjoys the same all-inclusive amenities, services, support, and event programming for one simple monthly fee, no long-term commitment required.

Just need an office or meeting room for a day? We've got you covered. Call our Workplace Concierge at **608-470-5600** or email us at **[coworking.madison@lodgic.org](mailto:coworking.madison@lodgic.org)** to make your reservation.

## PRIVATE OFFICES from \$600

Conduct business behind your own door without the headaches, additional costs, or long-term leases of traditional office space.

- Fully furnished for productivity, with powered sit-stand desks and ergonomic task chairs.
- Flexible configurations for teams of one to 15.
- Secure and lockable.
- Spacious and well-lit, featuring huge windows.



## DEDICATED DESKS \$450

Settle into your own fully-powered sit-stand desk that you can make all your own.

- Every desk comes with an ergonomic task chair, lockable file cabinet, and noise-reducing acoustical privacy panels.
- Choose your ideal location in our beautiful semi-private dedicated desk area.
- Desks generously spaced to ensure appropriate physical distancing.



## OPEN COWORKING \$250

Access all amenities, services, and style at a more accessible price point for our most flexible workers.

- A variety of seating areas and work surfaces available; change it up by the day to suit your needs.
- Special pricing available for university faculty, staff, and students.
- Limited number of memberships available to ensure appropriate physical distancing.



Contact our **Workplace Concierge** to book a tour or start your membership.

**608-470-5600 | [Coworking.Madison@LODGIC.ORG](mailto:Coworking.Madison@LODGIC.ORG)**

**LODGIC**  
**WORKPLACE**<sup>SM</sup>



## *Good things happen here.*

Lodgic Workplace is part of Lodgic Everyday Community. At Lodgic, we envision a world where anyone with aspirations has no barriers to achieving them. We're here to support you with hospitality-forward coworking, flexible childcare, modern comfort food and drink, and memorable event experiences. Just by being here, you're helping us in our purpose to support communities near and far.

Learn more at [lodgic.org/ourpurpose](https://lodgic.org/ourpurpose).

**Together, we can do a little good every day.**

608-470-5600 | **CONNECT WITH US**    
**Coworking.Madison@LODGIC.ORG**  
**[LODGICWORKPLACE.ORG/Madison](https://LODGICWORKPLACE.ORG/Madison)**

2801 Marshall Court, Madison WI 53705

Lodgic Workplace Madison is centrally located west of the University of Wisconsin in Shorewood Hills.