

HON

Make Your Space

adaptable, with Screens.



Adapting in the Workplace –

You deserve the peace of mind that your workplace is designed to protect you – especially now, when in-person collaboration is a bit more challenging. That’s why HON has created solutions that let you get down to business safely and discreetly, no matter if you’re at your desk or in a shared space.



Universal Desktop Screens

Privacy in a shared office used to be a challenge, but not anymore. Whether you’re punching out a project in a collaborative space or taking on a task solo, Universal Desktop Screens keep your productivity and health in check – discreetly and at a distance. These smart solutions easily attach to any worksurface, making them a versatile and reliable option when you need your space.

UNIVERSAL PLEXI-GLASS SCREEN



24" + 36"H | 30", 36", 48" W
Pass-thru opening also available. Ships with two black stands.

UNIVERSAL PANEL STACKER SCREEN



15" + 22"H | 22" -94" W (6' increments)
Can be used on any panel system between 1.975" and 3.450" thick. Panel stackers will work with both flat trim and radius trim. Stackers can span multiple panels.



AVAILABLE
FEBRUARY 8!

Desktop Screens

PET Screens are available in:
Above/Below, Above/Below "L",
and Above "U".

13, 20, 24, 30, 32 H | 24, 30, 36,
48, 60, 72 W.

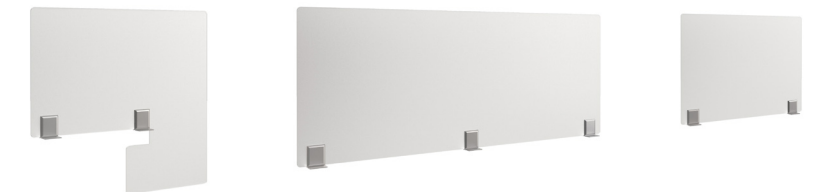
PET



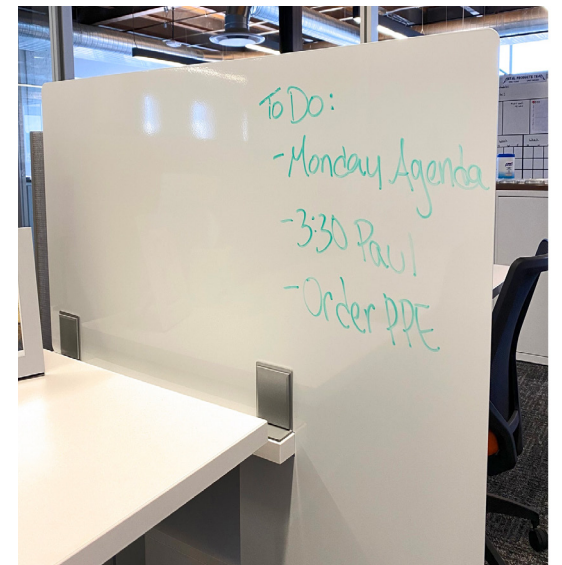
Desktop Screens

Both Acrylic and Metal Screens
are available in:
20 + 25"H | 24", 30", 36" W
Front, Side, and Pacman Screens

ACRYLIC



METAL

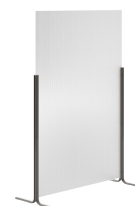


Freestanding Screens

Need a little alone time? Divide and conquer with HON's Freestanding Screens. These readily adaptable and exceptionally mobile solutions make a private breakout collaboration or strategy session effortless and efficient. And with a variety of materials and colors to choose from, you won't sacrifice style.



MixMax (Unika Vaev)
59"H | 55" + 63" W



Acrylic Screens
60" + 72"H | 36" + 48" W



Polycarbonate Screens
60" + 72" H | 48"W



Softline (Unika Vaev)
54", 59", 67" H | 32", 40", 47" W

OTHER PRODUCTS TO HELP YOU STAY PROTECTED

Hand Sanitizer Stands

Stand is compatible with most manufacturers' automatic hand sanitizer dispensers. Ideal for high-traffic areas.



MOUNT



STAND

PPE Stand

Fit's most manufacturer's boxed PPE, including gloves, masks, wipes, tissues and automatic hand sanitizer dispensers.



Door Pulls

Attaches to any door allowing for hands-free entrance and exit. Mounting hardware is included for attaching to wood and steel doors. Offered in Textured Black and Textured Titanium paint.



ARM DOOR PULL



FOOT DOOR PULL