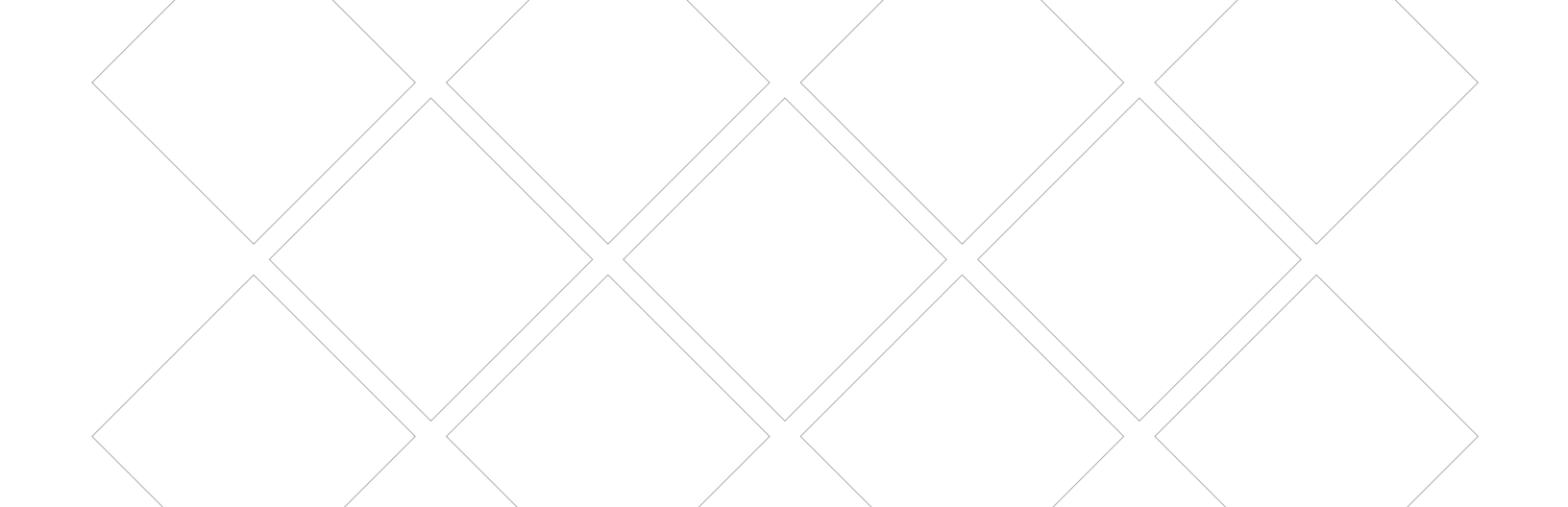


HON

Solve[®]





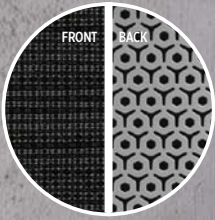
Take A Load Off
4-Way Stretch Mesh knit
fabric back uses your own
weight to create a softer,
personal fit.



THE ANSWER FOR
COMFORT AND VERSATILITY

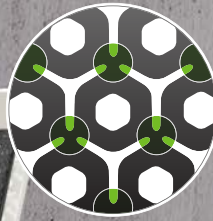
WE'VE GOT YOUR BACK

So, feel free to lean on us. With three back materials, three ergonomic controls, and optional adjustable lumbar support, Solve answers the need for total customization. It's like that BFF that provides continuous support, no matter the situation.



A Soft Touch

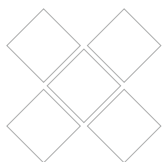
Why sacrifice? Get the look and feel of an upholstered back with the ergonomic benefits of the ReActiv™ back.



Keep Your Cool

Cool heads – and bodies – prevail. The patented geometric ReActiv back design provides a firmer fit along with continuous airflow.





ANY WAY YOU WANT IT

That's the way you need it. With so many options to choose from, Solve gives you everything you need and want for a truly customized look and feel. From arm adjustability and tilt control options to back materials and frame colors, you get to decide on the winning combination.



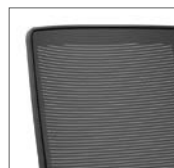
Shown with Empower and Contain.
Inspired by HON color palette Galaxy.



Shown with Preside.
Inspired by HON color palette Sail.



BACK OPTIONS



4-Way Stretch Mesh



Upholstered ReActiv



ReActiv

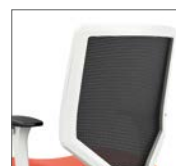
FRAMES



Titanium



Black



White

ARMS



2-D Adjustable Arms

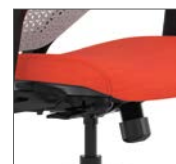


4-D Adjustable Arms



Fixed Arms

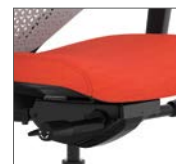
CONTROLS



Synchro-Tilt

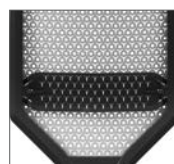


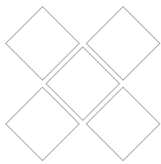
Synchro-Tilt With Seat Glide



Advanced Synchro-Tilt

OPTIONAL LUMBAR





WITH FLYING COLORS

Whether you're into painting the town red or going green, there's a Solve color combo that fits your style. Mix it up with a ginormous selection of seat fabrics combined with back fabrics and optional colored lumbar support to create a bold statement or a look that quietly complements.

Colorwav™
PERSONALIZATION



Tired of the same
basic black chair?

With our online
customization
tool, you can
see your bright
ideas come to life.

From frame to
fabric, you choose
the combination
that matches your
personality.





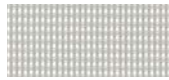
4-WAY STRETCH MESH BACK



Black



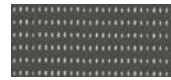
Navy



Fog



Chai



Charcoal



UPHOLSTERED REACTIV BACK

Mix and match until your heart's content by combining one of six upholstered back fabrics with a choice of hundreds of HON seat fabric selections.



Ink



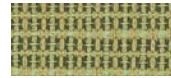
Midnight



Sterling



Putty



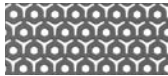
Meadow



Bittersweet



REACTIV BACK



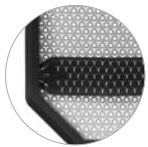
Charcoal



Titanium



Designer White



OPTIONAL LUMBAR



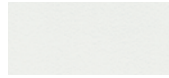
Black



Regatta



Titanium



Designer White



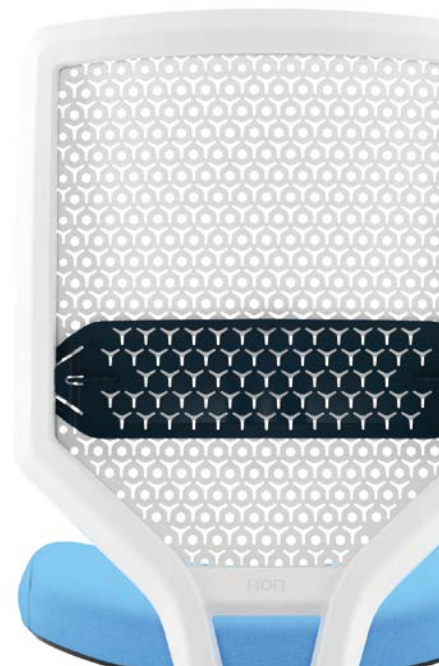
Krypton



Bullseye



Ember





THE DREAM TEAM

We keep good company. By partnering with the award-winning all-stars at Deisig Design HON has the unique ability to offer a truly personal and customizable seating platform. Add in the confidence of HON's Full Lifetime Warranty and it's easy to see why Solve is the easy answer for value and performance.

Wolfgang Deisig & Nils Köhn
Deisig Design - Designers of Solve

HON®

The HON Company
200 Oak Street, Muscatine, IA 52761
800.833.3964 | hon.com

© 2019 The HON Company. Form No. H5655 (01/19)
To view the registered and unregistered trademarks owned and used by The HON Company, visit hon.com/protected-marks. Models, upholstery and finishes are subject to change without notice.



DESIGNED, ENGINEERED
& ASSEMBLED IN THE USA

