

HON



SmartLink[®]

Education Products

A smart addition to active learning spaces.

An Academic Achievement

Show of hands—who loves long lectures? Today's classroom is more hands-on and collaborative, involving group interactions that better stimulate learning. That's why we've done our homework in the design of SmartLink. This collection of lightweight and mobile desks, chairs, storage and presentation tools earns high marks by being easy to arrange and rearrange, keeping active minds and bodies fully engaged.



Shown with Flock® seating





Classroom Chairs



Representing The Student Body

It's hard to concentrate in a room full of fidgety bodies. That's why SmartLink seating gets extra credit for being so responsive. The flexible Learning Curve™ design supports a wider range of movement so students can turn around, sit sideways, or lean back, keeping them comfortable and focused on the lesson. Designed for easy transport, SmartLink seating is available in a variety of sizes to fit all ages—giving it an A for effort.



Student Desks



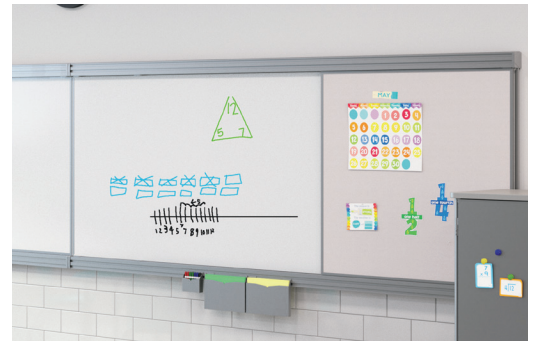
A Dependable Study Guide

Acing every placement test, SmartLink's student desks feature a unique shape that allows teachers to get creative with multiple layout options. Supporting both right- and left-handed users, SmartLink desks also feature doodle resistant surfaces that keep them looking good year after year. Optional accessories include a book box and backpack hook to keep classrooms clutter free. All that's needed is a No. 2 pencil.





Teacher Solutions



Head Of The Class

The ultimate teacher's assistant, the SmartLink collection includes a compact, mobile teacher station that accommodates technology, modular storage cabinets to keep school supplies well-organized, and versatile presentation tools that keep lessons visual and dynamic. A total classroom solution that supports any type of teaching style, SmartLink can adapt and evolve as needs change, making it a quick study.



Chairs



Short 4-leg Stacking Chair
6" height is a great solution for elementary-aged children. Stacks 5-high.



4-Leg Stacking Chairs
Available in 12"H, 14"H, 16"H and 18"H. 16"H and 18"H 4-leg chairs become mobile with the caster option. Stacks 5-high. Keep paperwork and school supplies neatly tucked under the 16"H and 18"H chairs with an added wire storage basket.



Cantilever Stacking Chair
Designed with a flexing front edge to allow energetic users to keep moving, even when sitting. Chairs can be placed on top of desks for easy cleaning, while rubber stoppers prevent scratches on surfaces. Available in 14"H, 16"H and 18"H. Stacks 5-high.



Counter Height 4-Leg Stool
24"H stool fits at table heights around 36"H. Stacks 5-high.



Cafe Height 4-Leg Stool
30"H stool fits at table heights around 42"H. Stacks 5-high.



Task Chair
Face the front of the class (or anywhere else you need to) with a 360-degree swivel and casters for easy movement.



Task Stool
360-degree swivel helps you keep an eye on everyone. Adjustable footrest supports users of any height.



Configure your own SmartLink chair on the product configurator at hon.com/configurator/education.

Teacher Solutions



Double Pedestal Desk

Classroom management can happen from anywhere thanks to a mobile desk with integrated storage.



Compact Desk

Plan lessons, conference with students, and store items all within an efficient, mobile footprint. Can be configured with pedestal on left or right side.



Mobile Bookcases

Learning materials are easily accessible when stored on mobile bookcases. Available in a variety of sizes.



Mobile Storage Cabinets

Easily roll over to store or distribute supplies and then scoot them out of the way. Discover their full potential with optional storage accessories. Available in a variety of sizes and functions.



Whiteboard Accessory

Too many ideas and not enough writing space? Make tall storage a multi-tasker by adding an optional whiteboard. For use on select storage models.



Wall Rail System

Move from subject to subject with ease. Wall rail presentation system layers multiple sliding whiteboards that can be reversed to double writing space.

Student Desks



Rectangle Top Student Desk
Adjusts from 23-33" to support users of all sizes.



Triangle Top Student Desk
Adjusts from 23-33" to support users of all sizes. Also available in a fixed-height option.



Sit-to-Stand Student Desk
Converts from 30" seated-height to 43" standing-height.



Bag Hook
Add this optional hook to keep backpacks off the floor.

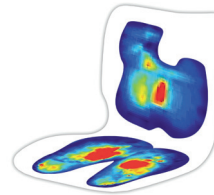
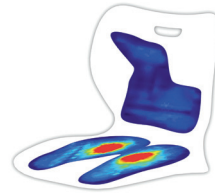


Book Box
Optional storage space keeps the desk area neat and organized.

Making The Grade For Comfort

Acing all exams, SmartLink seating was pressure tested against competitive products to ensure maximum comfort.

Extra credit given for smart back design which features contoured shape to keep bags from sliding off and a built-in handle for easy transport.





Make your space work.

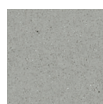
The HON Company
200 Oak Street, Muscatine, IA 52761
800.833.3964 | Check out hon.com

© 2020 The HON Company. Form No. H4979 (9/20)
To view the registered and unregistered trademarks
owned and used by The HON Company, visit
hon.com/protected-marks. Models, upholstery
and finishes are subject to change without notice.

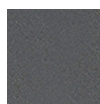


Finishes

Paints



Platinum
Metallic*



Charcoal*



Silver



Designer
White



Chrome

Colorwav™



Atom*



Bullseye*



Ember*



Ion*



Iris*



Krypton*



Regatta*

* Available as edgeband color option.

Shell Colors



Tangelo



Cherry



Lime



Calypso



Surf



Regatta



Mulberry



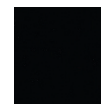
Platinum



Shadow



Lava



Onyx

Hard Plastic Tops



Natural
Maple



Harvest



Breeze



White



Sand

Laminates



Natural
Maple



Harvest



Pinnacle



Bourbon
Cherry



Cognac



Shaker
Cherry



Mahogany



Mocha



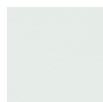
Kingswood
Walnut



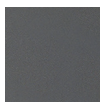
Florence
Walnut



Loft



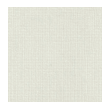
Designer
White



Charcoal



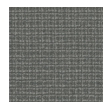
Black



Silver
Mesh



Sheer
Mesh



Steel
Mesh



Lowell Ash



Natural
Recon



Skyline
Walnut



Phantom
Ecru



Portico
Teak



Sterling
Ash

See HON Pricer for complete product information.

For more information, visit hon.com/smartlink