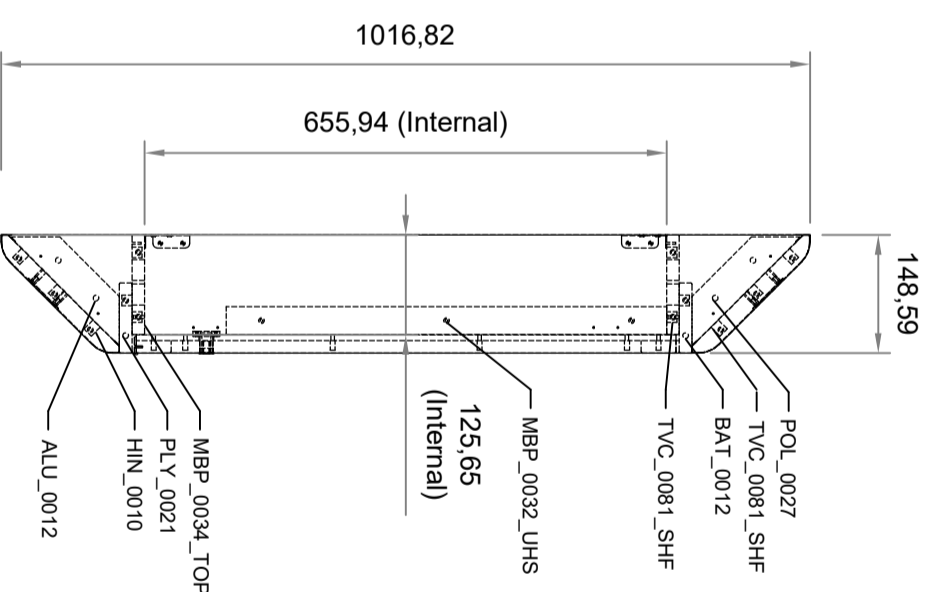
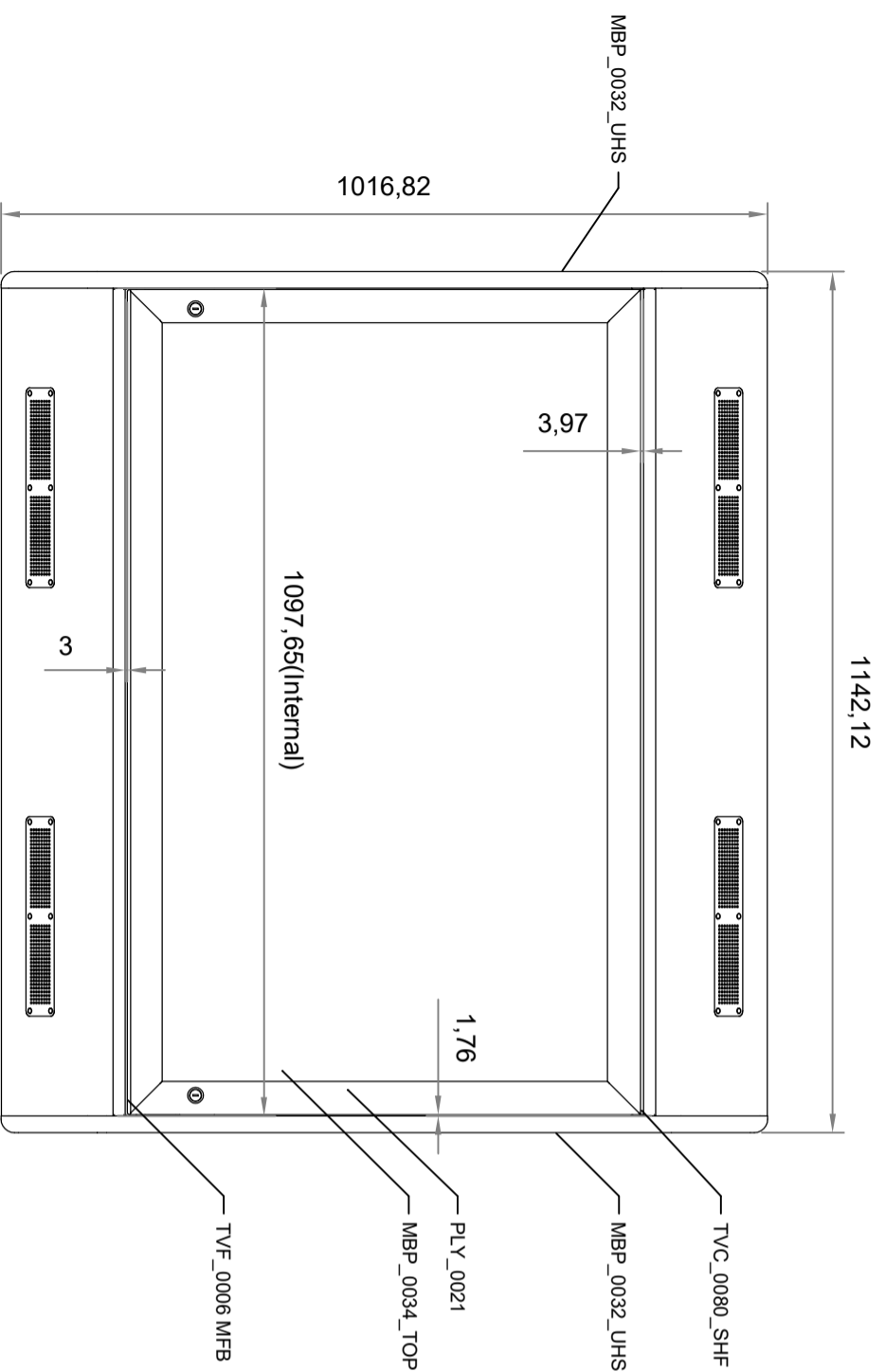
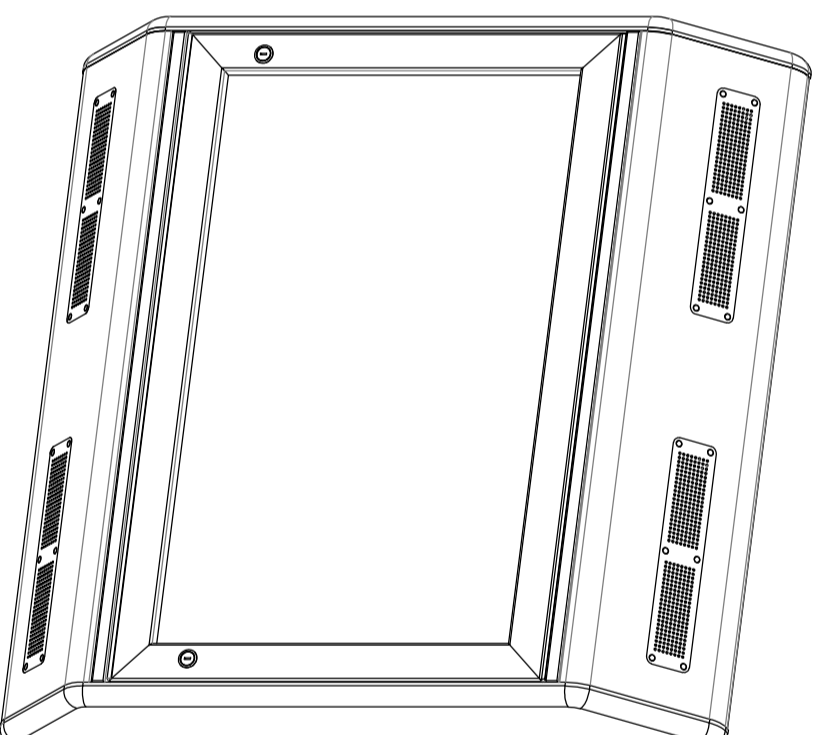


ANTI - LIGATURE 50" TV CABINET WALL MOUNTED

PART No.	QTY	COMPONENT SIZE
ALU_0012	1	860
BAT_0012	2	425 x 40 x 18
HIN_0010	1	860
MBP_0032_UHS	2	952.4 x 168 x 25
MBP_0034_TOP	2	864 x 235 x 25
PLY_0021	4	220 x 50 x 24
POL_0027	1	860 x 569 x 8
TVC_0080_SHF	2	864 x 100 x 18
TVC_0081_SHF	2	864 x 142 x 18
TVF_0006_MFB	1	860 x 569 x 18



Type:
Anti Ligature 50" TV Cabinet

Model:
Wall Mounted

Manufacture:
25mm Vinyl Wrapped MDF Carcase available in 5 Colours: Beech, Cream, Dark Elm, Light Elm & Oak
Extra Strength 8mm Polycarbonate Vision Panel Inset Doors with 8mm Polycarbonate Vision Panel
Sound & Ventilation Panels Fully Recessed with 3mm holes
No Exterior Fixings
2 Pinhex 8mm Quarter Turn Locks as Standard
Flush to Wall TV Bracket included

Sizes:
Available in Three Standard Sizes suitable to suit 32", 42" and 50" Flat Screen TV's

Contour Heating Ltd
The Mansions, 43 Broadway
Shifnal
TF11 8BB
Tel: 01952 290498
Email: Sales@contourheating.co.uk
Web: www.contourheating.co.uk