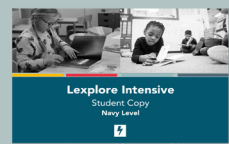
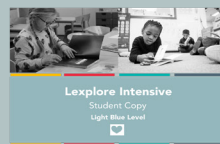
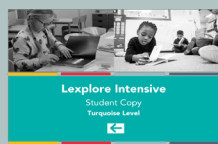


# Lexplore Intensive



**Lexplore Intensive is an all-encompassing reading intervention and development programme, created by experienced SENCo's, literacy leaders, dyslexia specialists and founders of Lancashire Dyslexia Information Guidance and Support (LDIGS).**

Working together with Lexplore Analytics, and drawing on the latest research into reading, literacy and curriculum standards, the Intensive Programme aligns with our award-winning AI assessment, to ensure the highest standard of resources and best practice are readily available to support and challenge students.

**Lexplore**  
ANALYTICS



## How is it structured?

**Lexplore Intensive** includes a wealth of resources, sorted into 5 colour coded reading ability levels. These levels directly correlate to those determined in the Lexplore Analytics Reading Assessment, making for a seamless transition that aligns to the concept of 'Assessment for Learning' and supports the Recovery Curriculum. The program can also be delivered as a stand-alone solution.

og	ke		cu		uk														
re	ek		ce		ock														
cek	gug		roc	said	there	we	my												
rec	rog		kug	have	you	like	her	crayon	loudest	replied									
uck	gock		gek	when	one	come	me	envelope	August	repeat									
ek	re		og	so	do	was	little	September	permanent	mystery	ot	aren't	can not	can't					
kug	rec		gug	they	out	you	be	adventure	interfere	October	not	weren't	did not	didn't					
gock			uck	some	what	they	said	July	signature	tournament	not	doesn't	do not	6. The painting was unusual, it bore little _____ to the original.					
Nonsense Words VG, CV and CVC; g, o, c,								what	he	all	were	denied	November	rehearsal	hadn't	has not	7. From the moment the suspect entered the police station, their ____ was suspicious.		
								were	was	are	she	complete	sympathy	January	not	haven't	is not	8. Initially, the tests had shown that the vaccine was working, but then additional studies showed it was actually _____.	
								High Frequency and Tricky Words				December	technical	conclude	d not	shouldn't	could not	9. The ancient civilisation of Mesopotamia is thought to have the earliest examples of writing, having its _____ before the 32 <sup>nd</sup> century B.C.	
												Polysyllabic Words				would not	wouldn't	let us	10. The scientist's theories were so intellectual and complex, often written in large tomes, and yet it was so clearly _____, that even young children could understand these difficult concepts.

9

Each reading level is split into three separate booklets:

Sentence Completion

***Each reading level is split into three separate booklets:***



# The Marking Book



## The Student Copy



## The Instructor Copy

Students are encouraged to work through the Student Copy whilst progress is marked in the Marking Book.

Precision teaching methods such as over-learning are followed throughout, for instance, by encouraging students to alternate between reading across and down a grid of phonemes, words and phrases in order to commit new knowledge to long term memory.

The Instructor copy contains comprehensive instructions and explanations of the various activities included, meaning a TA, SENCo or Teacher can easily deliver the program, without any prior planning or formal training.

Signposting is provided to resources which will further support children in areas they are struggling with, but also to challenge children who are showing higher ability.

Whilst clear guidance is provided on how to use Lexplore Intensive effectively, it is not prescriptive and remains adaptable to the needs and requirements of each student's individual needs.

# What is included?

**Lexplore Intensive** follows the familiar structure of the Letters and Sounds phases, starting with the very basics before moving beyond this to provide more challenging material. The program is highly inclusive and neurodiverse, with suitable content for EAL students and those with reading difficulties, as well as older students and those with well above average reading abilities.

## The Red (Low) Level

Simple training to develop children's foundations in phonological awareness and skills, through their interaction with simple, individual phonemes. Students will then work through combinations of vowels and consonants, in the form of nonsense words, so that they can learn to link the sounds and develop their reading technique.

- ✓ Individual sounds
- ✓ Alphabet Sounds & names
- ✓ Nonsense words
- ✓ Short decodable word-family words
- ✓ High frequency & tricky words

## The Yellow (Below Average) Level

Develops children's foundations in phonological awareness, skills and understanding, through their interaction with simple digraphs, phonemes and blends. Students will then work through different combinations of these, in the form of nonsense words, so that they can learn to link the sounds and develop their reading technique.

- ✓ Individual sounds
- ✓ Blends
- ✓ Nonsense words
- ✓ Word Families

## The Turquoise (Average) Level

Looks at new graphemes, before encountering alternative vowel phonemes, spellings and pronunciations and much more. A vast amount of materials are included as most students, at different ages, sit within this level.

- ✓ New graphemes
- ✓ Real & nonsense words
- ✓ Alternative vowel phonemes
- ✓ Alternative spellings & punctuation
- ✓ Polysyllabic & compound words
- ✓ High frequency & tricky words

## The Light Blue (Above Average) Level

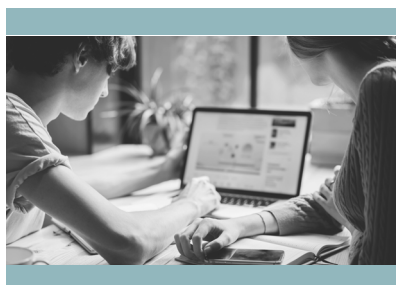
There is a shift at this level, from learning to read, to reading to learn and reading for information and pleasure.

- ✓ Compound words
- ✓ Contractions
- ✓ Homophones
- ✓ Tenses
- ✓ Affixes
- ✓ Spellings
- ✓ High frequency & tricky words

## The Navy (High) Level

Contains the most challenging material, including greater information on the morphology of words (particularly in relations to affixes), students will then look at additional homophones; homographs and homonyms; use the words they have encountered to improve their writing; work on their proof-reading; comprehension (through sentence completion), before moving on to the final section of high frequency and tricky words, together with subject specific spellings and spellings in general.

- ✓ Affixes
- ✓ Homophones
- ✓ Dictation
- ✓ Correcting Errors
- ✓ Homonyms & homographs
- ✓ Sentence Completion
- ✓ Subject specific spellings



**Find out more**

**[www.lexplore-analytics.co.uk/lexplore-intensive](http://www.lexplore-analytics.co.uk/lexplore-intensive)**

**[hello@lexplore.com](mailto:hello@lexplore.com)**

**+44(0)161 697 4166**

**@LexploreUK**



**Lexplore**  
ANALYTICS