



ANALYZE

Meetings has become virtual, as a new normal. Even planned in person meetings are having a planned virtual back-up. Organizations must have a flexible and scalable collaboration strategy to meet internal and external connections. Synergy SKY has a vendor agnostic strategy and supports most collaboration platforms. Synergy ANALYZE will give you meeting and collaboration insights from across platforms.

WHAT DOES IT DO?

Synergy ANALYZE collects data from your calendars, video infrastructure and sensors and matches this with meeting resources, capacity and behavior to give insight into: Meeting room and Video / UC utilization No – show and other waste of resources

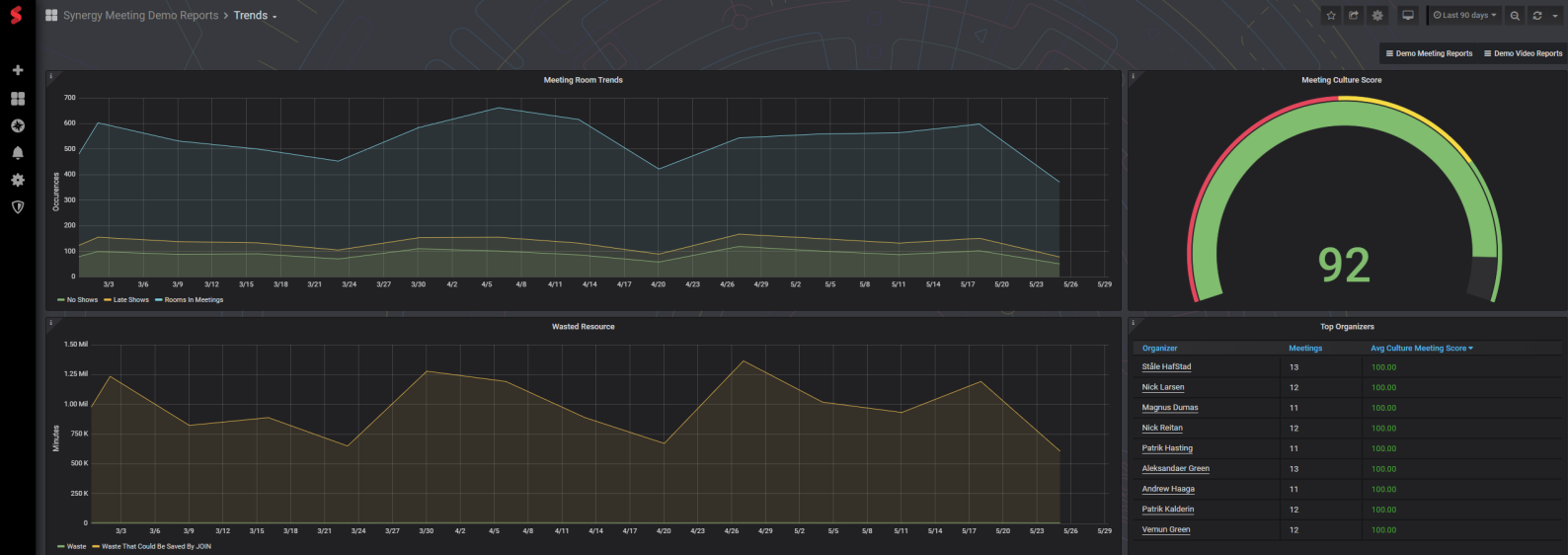
WHY IS IT IMPORTANT?

It enables organizations to get insights correlated between UC platforms, rooms and people. Being able to analyze data at this level allows organizations to understand communication trends and patterns that can help them drive their business more efficient and cut cost.

SYNERGY ANALYZE HELPS ORGANIZATIONS UNDERSTAND COLLABORATION TRENDS AND PATTERNS, AND PROVIDES THE ANALYSIS NEEDED TO MAKE FACT-BASED DECISIONS ON COLLABORATION INVESTMENTS, DIVESTMENTS, TRAINING, AND SERVICE CHANGES.

WHO IS IT FOR?

Synergy ANALYZE is for organizations who want to deliver a better meeting experience and at the same to get insight to all meeting activity in one single pane of glass. It serves IT and Facility departments with insights they can use to optimize resources and cut costs where rooms and UC investments are little- or not used. The users will have less frustration with finding



MEETING REPORTS

The Meeting Reports section of Synergy ANALYZE assembles a collection of data points from your environment to provide a unique view into the behavior of your meeting rooms. Synergy ANALYZE looks at the meeting rooms infrastructure, sensor information and meeting infrastructure equipment to reveal trends and optimization opportunities that are obscured by disparaged meeting and scheduling systems. Only Synergy ANALYZE fills the gaps of understanding and paints an accurate portrait of meeting room usage and occupancy.

VIDEO REPORTS

The Video Reports section of Synergy ANALYZE provides a collection of intuitive pages that demystify the statistics on past collaboration usage. At the surface, these reports provide the standard Key Performance Indicators (KPI) metrics typically available on most collaboration platforms. Calling stats, duration details, daily, monthly... etc. However, Synergy ANALYZE takes analytics one step further and allows the user to interact and explore the data like never before. Use filter and custom tagging to gain additional insight into the specifics of your environment. Click into and manipulate data collected by multiple sources to expose the real trends behind the numbers. Let Synergy ANALYZE provide the window into your collaboration data.

KEY BENEFITS

- Comprehensive Video Collaboration Usage Reports
- Environmental Impact Reports (CO2 Savings Report)
- Travel Savings Reports (ROI Travel cost Savings)
- Meeting No-Show and automatic de-booking
- People Count and Meeting Room Capacity reporting

KEY FEATURES

Understand Call History:

Drill into Call Detail Records (CDRs) Details, graphs, trends, and patterns Sort and filter by location, department, or device Easy way to justify whether an endpoint is being used

Determine Call Distribution:

Understand call trends by: Hours of the day Weekday Days of the Month Understand production peaks and foreshadow activity for "Busy Season" Capacity Planning

Monitor Infrastructure Usage (Pexip Infinity/ Cisco CMS):

Display Infrastructure Load: Call Count on Infrastructure Average Daily call count Most Used Infrastructure in minutes Shows what infrastructure is handling calls

Monitor endpoint usage:

Displays Endpoint Activity per endpoint: Calculates usage % per timeframe (Day) Orders the information for stack ranking Can use filters to answer questions like – "Which room systems are most used?"