



UNCORKED

20
14

PERENNIALS®

POUR L'EXTÉRIEUR ET L'INTÉRIEUR * FOR OUTDOORS AND INDOORS





un·corked [uhn-kawrkt]

1.
to have drawn the cork from.

2.
Informal. to have released or unveiled;
unleashed: to have uncorked one's
pent-up emotions.

With that in mind,
Perennials cuts loose and lets
off a little steam with:

UNCORKED

92 high-performance fabrics
for draperies, upholsteries or anywhere
you need the good stuff. Uncorked
features 100% solution-dyed acrylic
greatness and adheres to the exacting
standards of the luxury lifestyle.
Introducing eight new patterns
and twenty new colorways to
play with, outdoors or in.





[umbrellas, top to bottom] Perfect Setting/Lavender {741-277} Perfect Setting/Citrus {741-135} Perfect Setting/Denim {741-282}
Perfect Setting/Balsamic {741-293} Perfect Setting/Tutti Frutti {741-233}



Perfect Setting/Tutti Frutti {741-233} Please note that we don't currently sell umbrellas, but maybe we should.



[umbrellas, top to bottom] Perfect Setting/Lavender {741-277} Perfect Setting/Citrus {741-135} Perfect Setting/Denim {741-282}
Perfect Setting/Balsamic {741-293} Perfect Setting/Tutti Frutti {741-233}



[chair] Arabesque collection by Sutherland [seat cushion] Rough 'n Rowdy/Bronze {955-294} [pillow] Perfect Setting/Olive {741-264}
[throw] Leaf Me To It/Olive {742-264} [opposite, seat cushion] Fiddlesticks/Balsamic {745-293} [chair] Arabesque collection by Sutherland

The day wore on and our ensemble realized that they were still not entirely

UNCORKED

So as the sun went down,
they loosened up and went ape.

[tent top] Fiddlesticks/Tutti Frutti {745-233} [tent exterior] Basket Case/Tutti Frutti: {743-233}
[tent interior] Boathouse Stripe/Strawberry Fields {835-276} [tent trim] Stripe Tease/Red Coral {ST-166}
[tent tiebacks] Modern Twist/Rossa {MTTB-92} [lamp] John Dickinson collection by Sutherland
[lampshade] reversed Fiddlesticks/Citrus {745-135} [table] Hurel collection by Sutherland
[pillows, top to bottom] Perfect Setting/Dove {741-102} Shutter to Think/Tutti Frutti {744-233} with
Jake Stripe/Tutti Frutti {800-233} boxing reversed Shutter to Think/Tutti Frutti {744-233}
with Shutter to Think/Tutti Frutti {744-233} boxing Shutter to Think/Tutti Frutti {744-233} with
Slubby/Tutti Frutti {655-233} boxing [under flap, top to bottom] Slubby/Lavender {655-277}
reversed Leaf Me To It/Lavender {742-277} Rough 'n Rowdy/Violet {955-278} Rough 'n Rowdy/Lavender {955-277}



The day wore on and our ensemble realized that they were still not entirely

UNCORKED

So as the sun went down, they loosened up and went ape.

[tent top] Fiddlesticks/Tutti Frutti {745-233} [tent exterior] Basket Case/Tutti Frutti: {743-233}
[tent interior] Boathouse Stripe/Strawberry Fields {835-276} [tent trim] Stripe Tease/Red Coral {ST-166}
[tent tiebacks] Modern Twist/Rossa {MTTB-92} [lamp] John Dickinson collection by Sutherland
[lampshade] reversed Fiddlesticks/Citrus {745-135} [table] Hurel collection by Sutherland
[pillows, top to bottom] Perfect Setting/Dove {741-102} Shutter to Think/Tutti Frutti {744-233} with
Jake Stripe/Tutti Frutti {800-233} boxing reversed Shutter to Think/Tutti Frutti {744-233}
with Shutter to Think/Tutti Frutti {744-233} boxing Shutter to Think/Tutti Frutti {744-233} with
Slubby/Tutti Frutti {655-233} boxing [under flap, top to bottom] Slubby/Lavender {655-277}
reversed Leaf Me To It/Lavender {742-277} Rough 'n Rowdy/Violet {955-278} Rough 'n Rowdy/Lavender {955-277}





reversed Leaf Me To It/Lavender {742-277}



Leaf Me To It/Tutti Frutti {742-233}



[opposite, pool table] Leaf Me To It/Lavender {742-277}



[left to right] Old Hand/Mesa {974-281} Rough Copy/Sea Salt {956-124}
Old Hand/Sea Salt {974-124} Rough Copy/Sahara {956-229} Rough Copy/Mesa {956-281}

[pillows, left to right] Shutter to Think/Tutti Frutti {744-233} Perfect Setting/Olive {741-264} reversed Shutter to Think/Tutti Frutti {744-233}



[tablecloth] Perfect Setting/Balsamic {741-293} [trim] Basket Case/Balsamic {743-293} [seat cushions] Fiddlesticks/Balsamic {745-293}

[chairs and tables] Arabesque collection by Sutherland





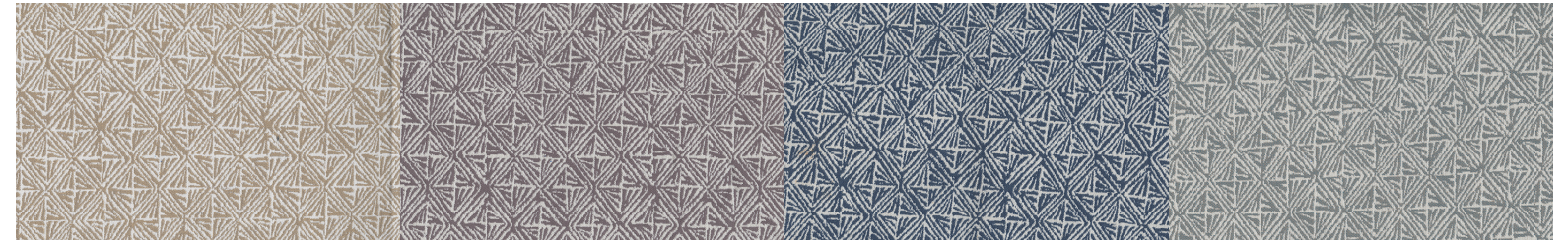
And now, in its entirety,
the 92 fabulous
fabrics of Uncorked



Basket Case/Dove {743-102} Basket Case/Citrus {743-135} Basket Case/Platinum {743-207} Basket Case/Pumice {743-208}



Basket Case/Tutti Frutti {743-233} Basket Case/Sable {743-244} Basket Case/Celery {743-263} Basket Case/Olive {743-264}



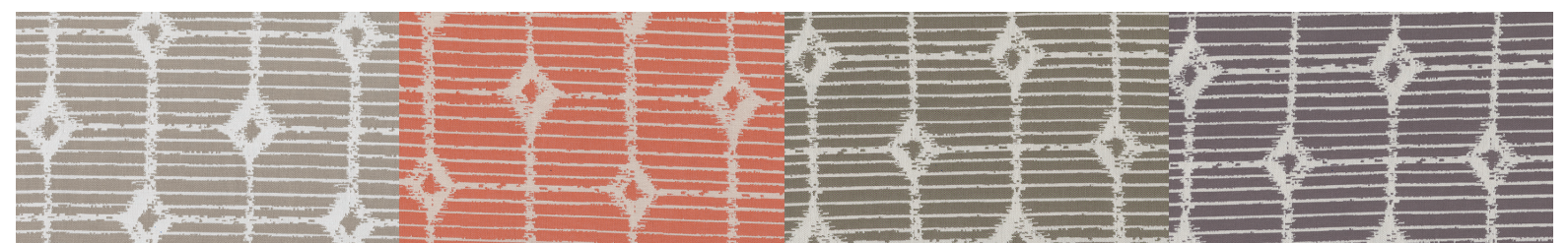
Basket Case/Wheat {743-268} Basket Case/Lavender {743-277} Basket Case/Denim {743-282} Basket Case/Dolphin {743-285}



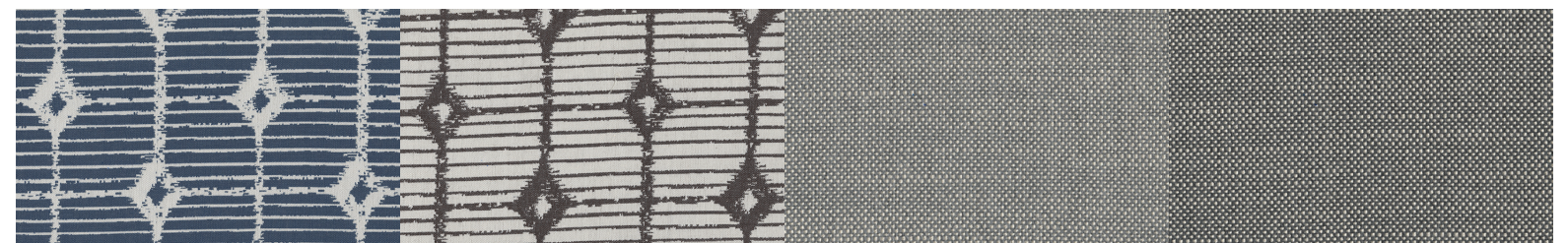
Basket Case/Balsamic {743-293} Rough 'n Rowdy/Ash {955-108} Rough 'n Rowdy/White Sands {955-270} Rough 'n Rowdy/Lavender {955-277}



Rough 'n Rowdy/Violet {955-278} Rough 'n Rowdy/Oatmeal {955-279} Rough 'n Rowdy/Tumbleweed {955-288} Rough 'n Rowdy/Bronze {955-294}



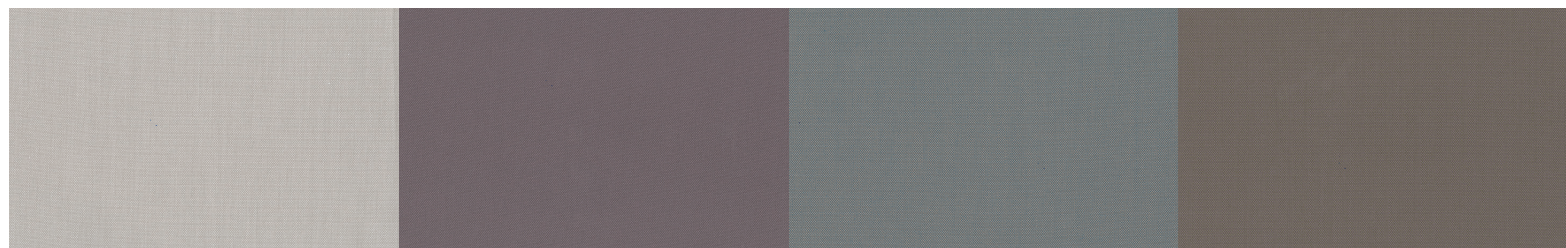
Shutter to Think/Dove {744-102} Shutter to Think/Tutti Frutti {744-233} Shutter to Think/Olive {744-264} Shutter to Think/Lavender {744-277}



Shutter to Think/Denim {744-282} Shutter to Think/Balsamic {744-293} Ishi/Platinum {950-207} Ishi/Pumice {950-208}



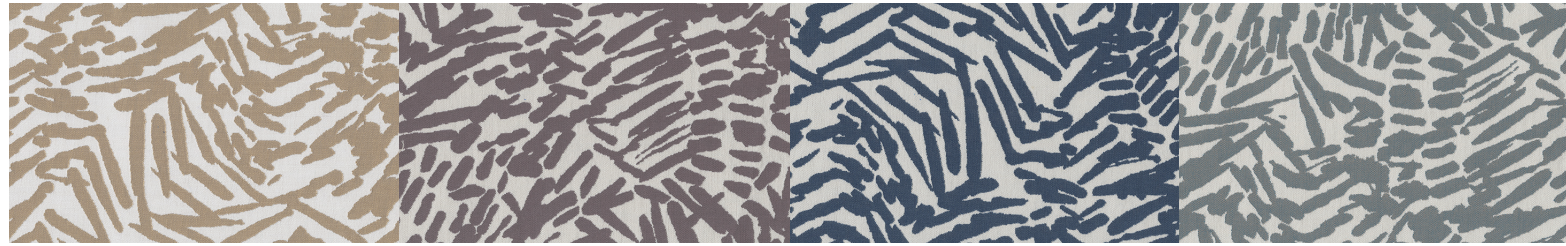
Ishi/Sable {950-244} Ishi/White Sands {950-270} Ishi/Lavender {950-277} Ishi/Fossil {950-284}



Canvas Weave/White Sands {600-270} Canvas Weave/Lavender {600-277} Canvas Weave/Dolphin {600-285} Canvas Weave/Cactus {600-287}



Fiddlesticks/Dove {745-102} Fiddlesticks/Citrus {745-135} Fiddlesticks/Tutti Frutti {745-233} Fiddlesticks/Olive {745-264}



Fiddlesticks/Wheat {745-268} Fiddlesticks/Lavender {745-277} Fiddlesticks/Denim {745-282} Fiddlesticks/Dolphin {745-285}



Fiddlesticks/Balsamic {745-293} Old Hand/Dove {974-102} Old Hand/Ash {974-108} Old Hand/Sea Salt {974-124}



Old Hand/Pelican {974-220} Old Hand/White Sands {974-270} Old Hand/Mesa {974-281} Old Hand/Zinc {974-283}



Perfect Setting/Dove {741-102} Perfect Setting/Citrus {741-135} Perfect Setting/Tutti Frutti {741-233} Perfect Setting/Celery {741-263}



Perfect Setting/Olive {741-264} Perfect Setting/Wheat {741-268} Perfect Setting/Lavender {741-277} Perfect Setting/Denim {741-282}



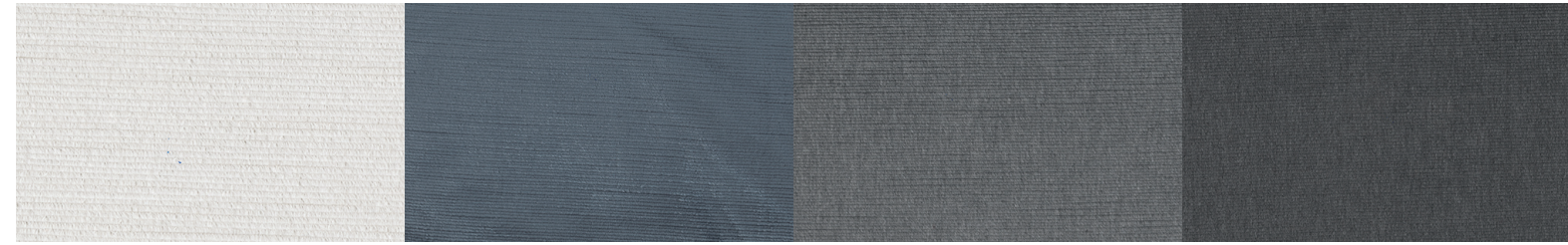
Perfect Setting/Dolphin {741-285} Perfect Setting/Balsamic {741-293} Plushy/Ash {990-108} Plushy/Lavender {990-277}



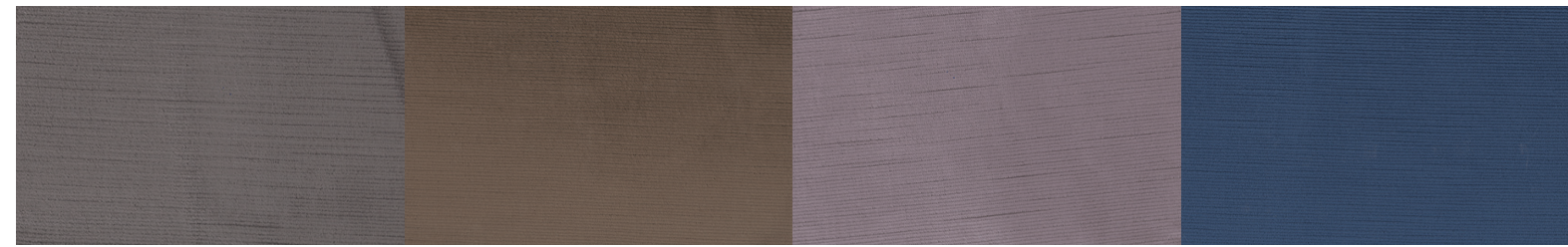
Rough Copy/Sea Salt {956-124} Rough Copy/Sahara {956-229} Rough Copy/Quartz {956-269} Rough Copy/Oatmeal {956-279}



Rough Copy/Mesa {956-281} Rough Copy/Silver Lining {956-295} Swanky/Linen {994-27} Swanky/Ash {994-108}



Swanky/Sea Salt {994-124} Swanky/Slate {994-142} Swanky/Platinum {994-207} Swanky/Grey Matter {994-217}



Swanky/Taupe {994-222} Swanky/Sable {994-244} Swanky/Lavender {994-277} Swanky/Denim {994-282}



Leaf Me To It/Citrus {742-135} Leaf Me To It/Tutti Frutti {742-233} Leaf Me To It/Olive {742-264} Leaf Me To It/Lavender {742-277}



Leaf Me To It/Denim {742-282} Leaf Me To It/Balsamic {742-293} Slubby/White Sands {655-270} Slubby/Lavender {655-277}



Sail Cloth/Ash {680-108} Sail Cloth/Sage {680-262} Sail Cloth/Frost {680-265} Sail Cloth/Lavender {680-277}

The Uncorked collection is a creative accomplishment and a technical advancement utilizing the Perennials genuine solution-dyed acrylic technology. All Perennials fibers are independently lab tested and certified so they comply with, or exceed, industry standards including resistance to soil, water, UV radiation, tearing and abrasion. This collection features Perennials Nanoseal™ finish for extra protection against the elements. More than just a coating, Perennials Nanoseal™ is molecularly bonded with the fibers providing long-lasting protection, even after repeated washings. Because Perennials fibers are solution-dyed, the color permeates to the core, enabling Perennials to confidently offer a three-year warranty against fading. From fiber technology, to design, to quality assurance, every step in the production process is under Perennials' care and control. All very good reasons why Perennials fabrics have character and longevity like no other.



PERENNIALS
FIBER DESIGN

THIS MARK ASSURES GENUINE PERENNIALS
100% SOLUTION-DYED ACRYLIC TECHNOLOGY

perennialsfabrics.com
toll free U.S. 888.322.4773
international +1.214.638.4162



The
E N D

