



## Who We Are

Hailo has developed the best performing edge AI processor – a revolutionary deep learning solution that allows smart edge devices to run high-performance AI applications that could previously only run in the cloud.

With market-leading products and our global partners across various domains, Hailo continues to boost edge AI for new customers across various markets.

## Our Mission

Hailo's deep learning technology is set to transform multiple industries with edge AI. We are focused on building efficient and compact AI processors capable of computing and interpreting vast amounts of data in real-time.

We enable smart edge technologies to reach their full potential. We bridge the gap between existing and future AI technologies by delivering the compute capacity needed to power them.

## A Leading Solution Across Industries

The Hailo-8 AI processor is designed to fit into a multitude of smart machines and devices, impacting a wide array of sectors including Automotive, Smart Cities, Industry 4.0, Retail and Smart Home. We work with world-leading OEMs, ODMs, Tier 1s and software vendors across different industries.

## Industries



Automotive



Smart City



Smart Home



Smart Retail



Industry 4.0

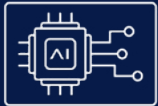
---

**Empower Your Edge AI Products Today!**

## Target Platforms



Intelligent Camera



Edge AI Box

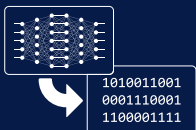


Front-Facing Camera

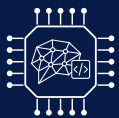


ADAS Electronic Control Unit

## Tools



Datoflow Compiler



Hailo Applications

## Our Products

Rethinking traditional computing, we developed Hailo's Structure-Defined Dataflow Architecture and designed a groundbreaking AI processor – the Hailo-8™.

Our production-ready Hailo-8 delivers high, data center-class performance – up to 26 tera-operations per second (TOPS), with minimal power consumption, size and cost. Embedded in small edge devices, such as intelligent IP cameras, edge compute devices and ADAS systems, Hailo-8 enables them to perform deep learning inference tasks such as state-of-the-art object detection and segmentation while processing high resolution data streams in real-time.

Hailo-8 is also available in standard form factors – an M.2 and Mini PCIe high-performance AI acceleration modules, that allow easy integration into computing devices such as IPCs, edge servers and AI Edge Boxes.

For developers, the Hailo-8 is supported by the Hailo Dataflow Compiler – a comprehensive software toolchain that integrates with existing deep learning development frameworks and allows easy prototyping and integration, and our dedicated Evaluation Board, which allows easy access to all peripherals necessary for development, testing and debugging.

Hailo uniquely provides a high-performance applications infrastructure that shortens development time with visualization and out-of-the-box results.



Hailo-8™ AI Processor



Hailo-8™ M.2 AI Acceleration Module



Hailo-8™ mPCIe Acceleration Module

[www.hailo.ai](http://www.hailo.ai)

