



Aurora Heights *Avery*

SF 3,736 | 3 Bedrooms | 2.5 Bathrooms | 2 Car Garage

Elevation A



Elevation B



Elevation C



The Avery is designed to allow for the best use of space and main floor living. Upon entering this home you are greeted by an inviting, wide entry and versatile living room. The open great room provides a large space for entertaining and opens to a spacious kitchen with pantry, large island and separate dining space. Guests enjoy convenient access to the half bath which is tucked away for privacy. The separate laundry room and mudroom are located just off the garage. The generous master suite with private bath, two additional bedrooms and full bath complete this beautiful Rambler plan.

*Floorplans and renderings are conceptual drawings and may vary from actual plans and homes as built. Options and features may not be available on all homes and are subject to change without notice. Dimensions are approximate. Actual homes may vary from photos and/or drawings which may show upgrades and may not represent the lowest-priced homes in the community. 7/7/20



garbetthomes.com

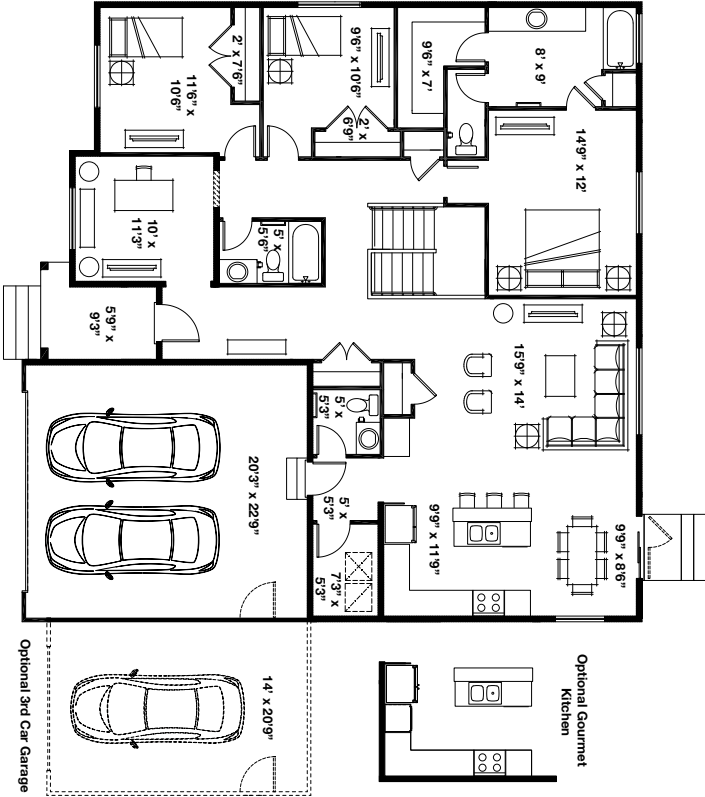
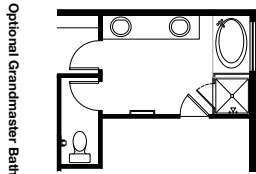
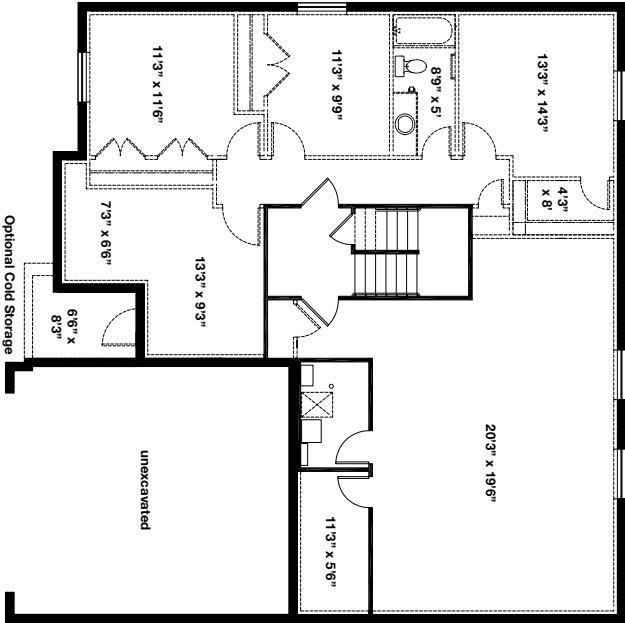
801.396.9882





Aurora Heights Avery

SF 3,736 | 3 Bedrooms | 2.5 Bathrooms | 2 Car Garage



*Floorplans and renderings are conceptual drawings and may vary from actual plans and homes as built. Options and features may not be available on all homes and are subject to change without notice. Dimensions are approximate. Actual homes may vary from photos and/or drawings which may show upgrades and may not represent the lowest-priced homes in the community. 7/7/20