

## YOUR WORKING AT HEIGHT PARTNER

### Specifications

Model	ZX-135/70	
-------	-----------	--

Measurements	US	Metric
Working height maximum*	141 ft	43.15 m
Platform height maximum	135 ft	41.15 m
Horizontal reach max - riser extended	59 ft 2 in	18.03 m
Horizontal reach max - riser retracted	69 ft 9 in	21.26 m
Up and over clearance maximum -		
riser extended	75 ft 6 in	23.01 m
riser retracted	32 ft 6 in	9.91 m
Below ground reach	19 ft 3 in	5.87 m
▲ Platform length - 8 ft / 6 ft model	3 ft / 2 ft 6 in	0.91 m / 0.76 m
▲ Platform width - 8 ft / 6 ft model	8 ft / 6 ft	2.44 m / 1.83 m
▲ Height - stowed	10 ft 1.5 in	3.09 m
▲ Length - stowed	42 ft 5 in	12.93 m
▲ Width - axles retracted	8 ft 2 in	2.49 m
Width - axles extended	12 ft 11 in	3.94 m
▲ Wheelbase - axles retracted	13 ft 6 in	4.11 m
Wheelbase - axles extended	13 ft 6 in	4.11 m
▲ Ground clearance - center	1 ft 3 in	0.38 m

### Productivity

Lift capacity	600 lb	272 kg
Platform rotation	160°	
Vertical jib rotation	110°	
Turntable rotation	360° continuous	
Turntable tailswing - axles extended riser up	2 ft 8 in	0.81 m
Turntable tailswing - riser down	14 ft 1 in	4.29 m
Drive speed - stowed	3.0 mph	4.8 km/h
Drive speed - raised	0.68 mph	1.1 km/h
Lift speed to full height	96 sec	
Gradeability - stowed**	45%	
Tilt sensor activation	front to back: 4.5° and side to side: 4.5°	
Turning radius - axle retracted: inside	26 ft 4 in	8.03 m
outside	32 ft 8 in	9.96 m
Turning radius - axle extended: inside	9 ft 6 in	2.90 m
outside	20 ft 3 in	6.17 m

Controls	12 V DC proportional
Tires	445D50/710 18 ply foam-filled

### Power

Power source	74 hp (55 kW) Deutz turbo diesel, Tier 4f, 2.9 L
Auxiliary power unit	12 V DC
Hydraulic tank capacity	65 gal / 246.1 L
Fuel tank capacity	40 gal / 151.4 L

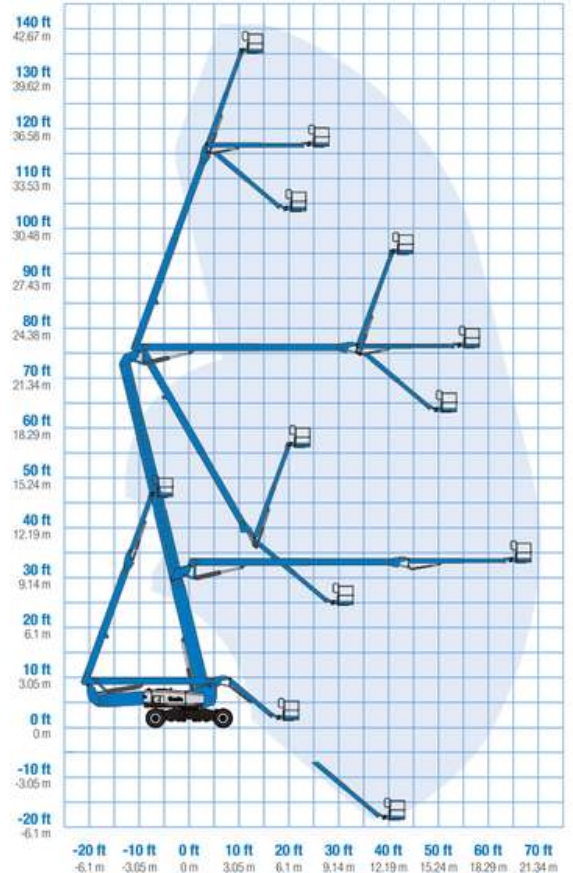
### Weight\*\*\*

46,500 lb / 21,092 kg

### Standards Compliance

ANSI A92.20, CSA B354.6, EN 280, AS 1418.10

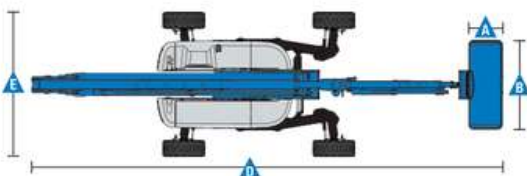
### Range Of Motion ZX-135/70



\* The metric equivalent of working height adds 2 m to platform height. U.S. adds 6 ft to platform height.

\*\* Gradeability applies to driving on slopes. See operator's manual for details regarding slope ratings.

\*\*\* Weight will vary depending on options and/or country standards.



### YOUR WORKING AT HEIGHT PARTNER

#### Features

Standard Features	Easily Configured To Meet Your Needs	Options & Accessories
<p><b>Measurements</b></p> <ul style="list-style-type: none"> <li>• 141 ft (43.15 m) working height</li> <li>• 69 ft 9 in (21.26 m) horizontal reach</li> <li>• 75 ft 6 in (23.01 m) up and over clearance</li> <li>• Up to 600 lb (272 kg) lift capacity</li> </ul> <p><b>Productivity</b></p> <ul style="list-style-type: none"> <li>• Mini XChassis™ extendable axles</li> <li>• 12 to 20 ft (3.66 to 6.1 m) Jib-Extend™</li> <li>• 160° Hydraulic platform rotation</li> <li>• Proportional joystick controls</li> <li>• Hydraulic oil cooler</li> <li>• Drive enable</li> <li>• AC power cord to the platform</li> <li>• Horn</li> <li>• Hour meter</li> <li>• Tilt alarm</li> <li>• Descent alarm</li> <li>• 360° continuous turntable rotation</li> <li>• Positive traction 4WD</li> <li>• Two speed wheel motors</li> <li>• Four wheel high angle steer</li> <li>• Four steering modes: front, rear, crab and coordinated</li> <li>• Four wheel brakes</li> <li>• On board full diagnostics and engine monitoring display</li> <li>• Lift Tools™ Work Tray</li> <li>• Platform Load sense system</li> <li>• Entry Toeboard</li> <li>• Lift Connect™ Telematics</li> <li>• Lift Guard™ Contact Alarm</li> </ul> <p><b>Power</b></p> <ul style="list-style-type: none"> <li>• 12 V DC auxiliary power</li> <li>• Auto engine fault protection</li> <li>• Swing out engine tray</li> </ul>	<p><b>Platform Options</b></p> <ul style="list-style-type: none"> <li>• Steel 6 ft (1.83 m) platform with side swing gate</li> <li>• 8 ft (2.44 m) tri-entry platform with side swing gate (standard)</li> </ul> <p><b>Engine Options</b></p> <ul style="list-style-type: none"> <li>• 74 hp (55 kW) Deutz turbo diesel, T4f</li> </ul> <p><b>Drive/Steer</b></p> <ul style="list-style-type: none"> <li>• 4WD (standard)</li> <li>• 4WS (standard)</li> </ul> <p><b>Tire</b></p> <ul style="list-style-type: none"> <li>• Rough terrain foam-filled (standard)</li> </ul>	<p><b>Productivity Options</b></p> <ul style="list-style-type: none"> <li>• Lift Guard Platform Mesh - Half</li> <li>• Lift Guard Platform Mesh - Full</li> <li>• Lift Guard Platform Mesh - Screen (8ft platform only)</li> <li>• Platform top auxiliary rail</li> <li>• Welder package</li> <li>• Welder Ready package</li> <li>• Cold weather, fire resistant, or biodegradable hydraulic oil</li> <li>• Hostile environment kit</li> <li>• Thumb rocker steer</li> <li>• Light package</li> <li>• Pipe cradle (pair)**</li> <li>• Alarm package</li> <li>• Panel cradle package</li> <li>• Lockable platform control box cover</li> <li>• Operator Protective Structure**</li> <li>• Fall Arrest Bar</li> <li>• Lift Tools Access Deck*</li> <li>• Lift Tools Expo Installer*</li> </ul> <p><b>Power Options</b></p> <ul style="list-style-type: none"> <li>• 12 kW welder ready AC generator - 208 V / 110 V / 60 Hz</li> <li>• 7.5 kW welder ready AC generator - 208 V / 120 V / 60 Hz</li> <li>• 3 kW AC generator - 110 V / 60 Hz</li> <li>• Cold weather kit</li> <li>• Diesel scrubber/catalytic muffler***</li> <li>• Intake air pre-cleaner</li> <li>• Positive air shut off system (Deutz engine only)</li> </ul>



\* Available as limited regions  
 \*\* Available through aftermarket parts only  
 \*\*\* Tier 4i engine only

