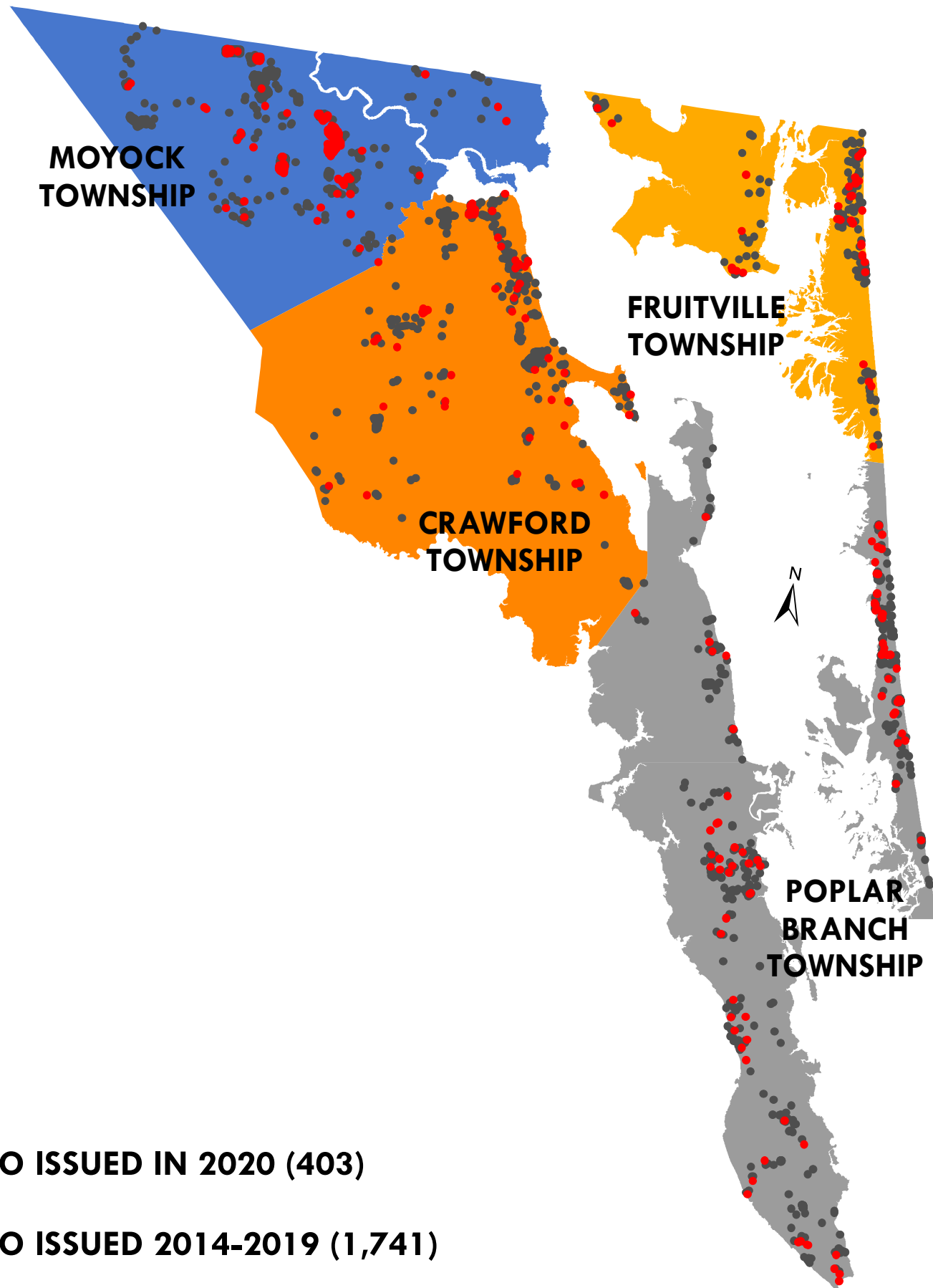


RESIDENTIAL CERTIFICATES OF OCCUPANCY ISSUED: JANUARY 1, 2014-DECEMBER 31, 2020 (2144)*

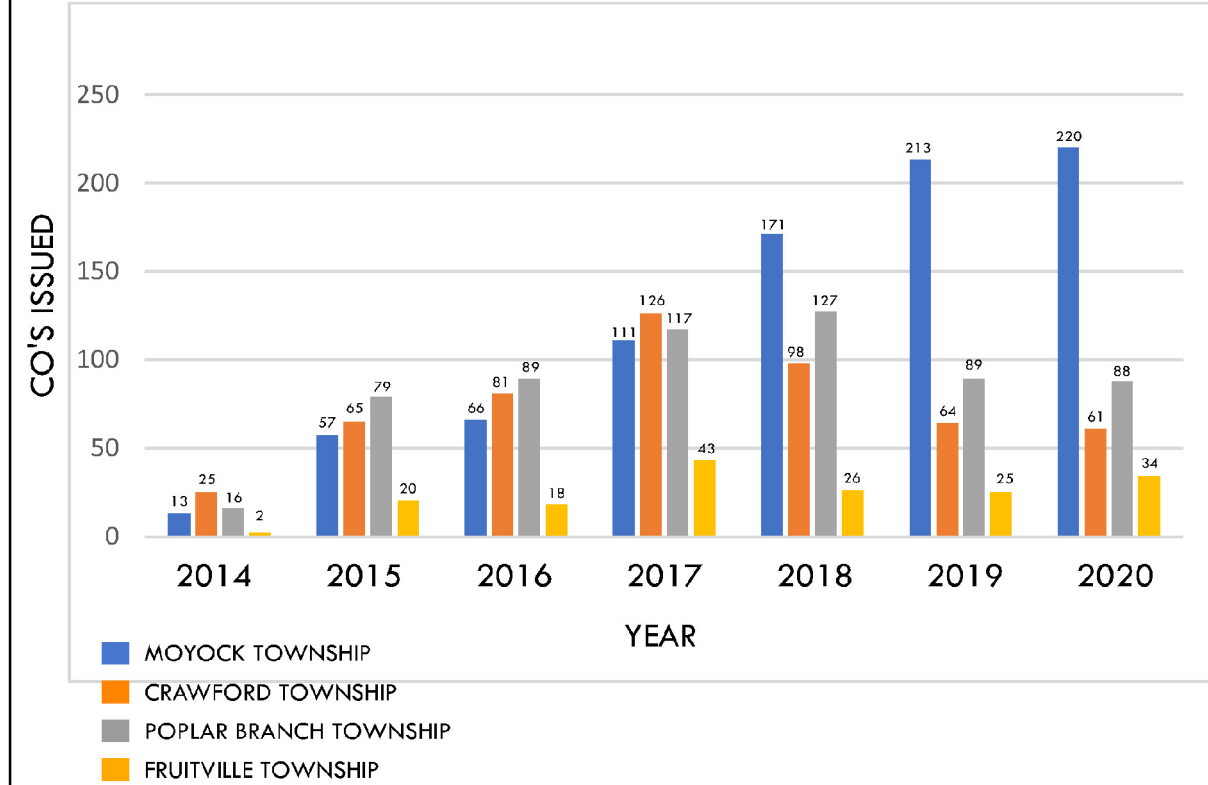
*Source: Currituck County Permits and Inspections



- CO ISSUED IN 2020 (403)
- CO ISSUED 2014-2019 (1,741)

CO'S ISSUED BY TOWNSHIP AND YEAR: JANUARY 1, 2014 - DECEMBER 31, 2020

SOURCE: CURRITUCK COUNTY PERMITS AND INSPECTIONS



CO'S ISSUED BY SUBTOWNSHIP AND YEAR: JANUARY 1, 2014 - DECEMBER 31, 2020

SOURCE: CURRITUCK COUNTY PERMITS AND INSPECTIONS

