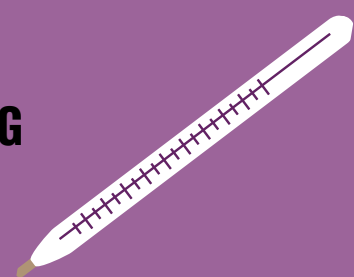
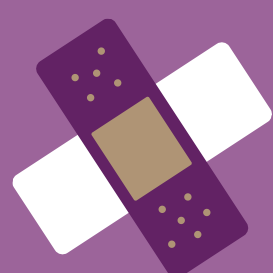
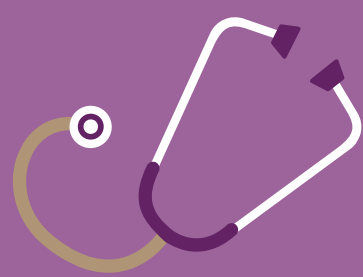


# DAYSTAR SENIOR RETIREMENT CLINICAL CARE SERVICES



- \* INSULIN DEPENDENT DIABETIC MANAGEMENT
- \* PARKINSON'S SUPPORT
- \* MILD TO MODERATE MEMORY CARE MANAGEMENT
- \* COPD, CHF MANAGEMENT
- \* OXYGEN MONITORING
- \* PACEMAKER MONITORING ASSISTANCE
- \* PREOPERATIVE, POST-OPERATIVE COORDINATION OF CARE
- \* MOBILE LAB SERVICE
- \* UA, BLOOD DRAWS, INR, COVID TESTING
- \* MOBILE XRAY
- \* OUT-PATIENT REHABILITATION THERAPIES
- \* COORDINATION OF HOME HEALTH AND HOSPICE
- \* OSTOMY AND CATHETER CARE
- \* WOUND CARE MANAGEMENT
- \* VIRTUAL DR' VISIT ASSISTANCE
- \* HEARING EVALUATIONS AND SUPPORT DIETARY MANAGEMENT