

GB EMPLOYER CONTACT TRACING – SEVEN BENEFITS FOR YOUR BUSINESS

Gallagher Bassett's dedicated Employer Contact Tracing solution is a core disease control measure and a key strategy for preventing further spread of COVID-19 within your organization. Here are seven reasons Employer Contact Tracing is an essential component of your safe re-occupancy roadmap.

1



Ensure your employees have a safe and secure environment when they return to the workplace.

- As more and more employees return to work, GB Employer Contact Tracing provides a valuable safety measure to prevent cluster outbreaks and ensure that workers avoid COVID-19 infection.
- Implementing a proactive disease control measure that will reduce the risk of infection in the workplace helps to improve employee confidence.

2



Performing contact tracing in-house is a time consuming and burdensome process. The administrative activity of performing contact tracing grows and becomes more difficult to keep up with as cases mount.

- Tracking and managing data using documents and spreadsheets is inefficient and difficult to sustain. GB uses a custom built tool to efficiently track and manage data.
- To be effective, contact tracing requires rapid execution. GB will reach out to an infected employee within 2 hours of notification.
- In addition, GB has a scalable operation that provides coverage 7 days a week from 8:00 A.M. Eastern to 8:00 P.M. Pacific Time.

3



Allow your HR, Safety and Risk Management Team to focus on core strategic functions instead of performing administrative activities.

- Over 50 percent of employers have implemented in-house contact tracing, generally through HR departments or Safety departments. As re-occupancy continues to expand, contact tracing will require more and more resources to keep up with the effort. GB Employer Contact Tracing allows your HR and Safety teams to focus on the important work of helping employees adjust to the new normal.
- With the COVID-19 environment likely to extend well into 2021, GB Employer Contact Tracing provides an opportunity for companies to find an external solution. This will free up internal resources to focus on the business.





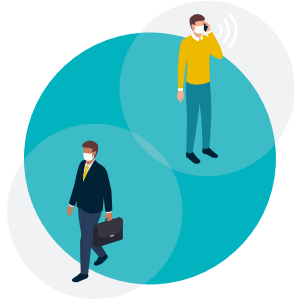
4



Help your company remain in compliance with evolving COVID-19 regulations.

- Recent CA SB-1159 legislation creates a new data tracking and reporting requirement for your organization. GB contact tracing can help with the tracking and reporting to ensure you remain in compliance.
- As new regulations get passed in other jurisdictions, GB will gather the right data to ensure you remain in compliance.

5



Reduce your liability to future COVID-19 lawsuits in two important ways.

- GB Employer Contract Tracing reduces the number of COVID-19 outbreaks within the workplace to reduce the frequency of future lawsuits.
- Engaging GB's contact tracing experts provides clear evidence that your company is taking proactive measures to reduce COVID-19 outbreaks and ensure that employees are safe and secure in the workplace. Proactive safety measures enable you to rebut the presumption under CA SB-1159.

6



Reduce the overall cost of future workers' compensation claims by reducing both claim frequency and severity.

- Contact tracing will prevent additional infections in the workplace by ensuring that employees isolate or quarantine to avoid further spread.
- Effective contact tracing will also help prevent cluster outbreaks where large numbers of employees are quickly infected in a single location.

7



GB contact tracers have a unique skillset to deliver superior contact tracing performance.

- Workers' Compensation Resolution Managers have been trained to perform contact tracing.
- Bring an empathetic approach to sensitive conversations with employees that are ill or may have been infected.
- Our team are experienced with conducting a medical investigation and dealing with medical terminology.

GALLAGHER BASSETT'S DEDICATED EMPLOYER CONTACT TRACING SOLUTION

ensures your workforce and your organization remain safe during, and after, the re-occupancy phase of your business.

For more information, please visit Gallagherbassett.com/contacttracing