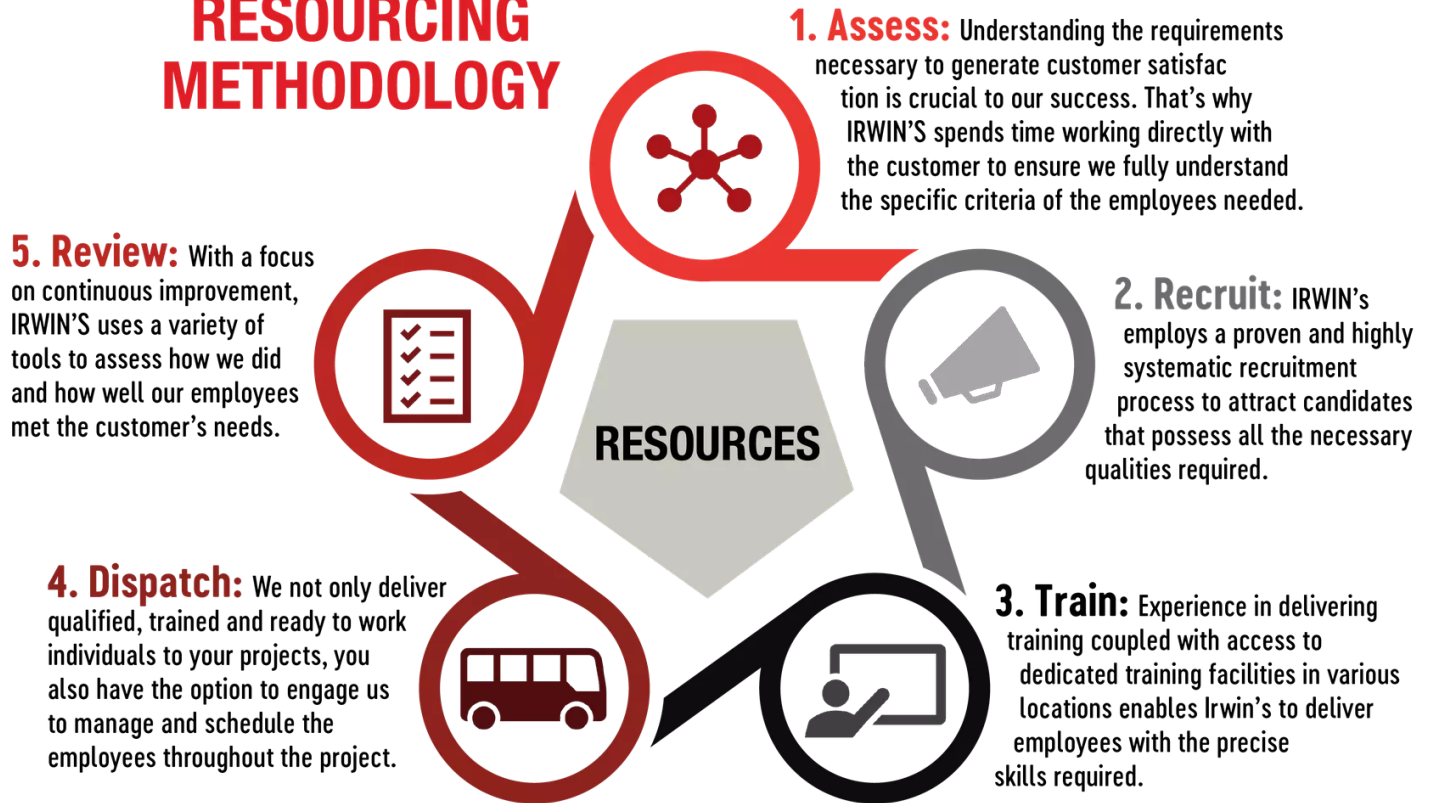


IRWIN'S RESOURCING METHODOLOGY



Why IRWIN'S?

Irwin's has been successfully staffing industrial projects since 2009 and as a result has a substantial database of qualified individuals ready for work throughout Alberta and BC. Clients turn to Irwin's because of the Resources Department's success in attracting the right candidates to meet client's needs and expectations.

What do we do?

The Resources Department's sole function is to: attract, assess, educate, train, review and retain personnel to match the unique needs of our customers. We specialize in delivering qualified, trained and ready to work employees:

- **Entry Level** – confined space attendants, spark watch, industrial labourers, equipment operators
- **Technicians & Trades** - Emergency & High angle rescue, Medics,
- **Consultants** - NCSO, CRSP, Industrial Hygiene
- **Project Managers**
- **Professional, industry experienced instructors**

Irwin's Resources department satisfies your high demand for manpower, in a short amount of time

All of our Resourcing processes are designed to deliver customer satisfaction, in the most cost effective and efficient manner.