

Installing TV on arms

SAFETY STEPS:

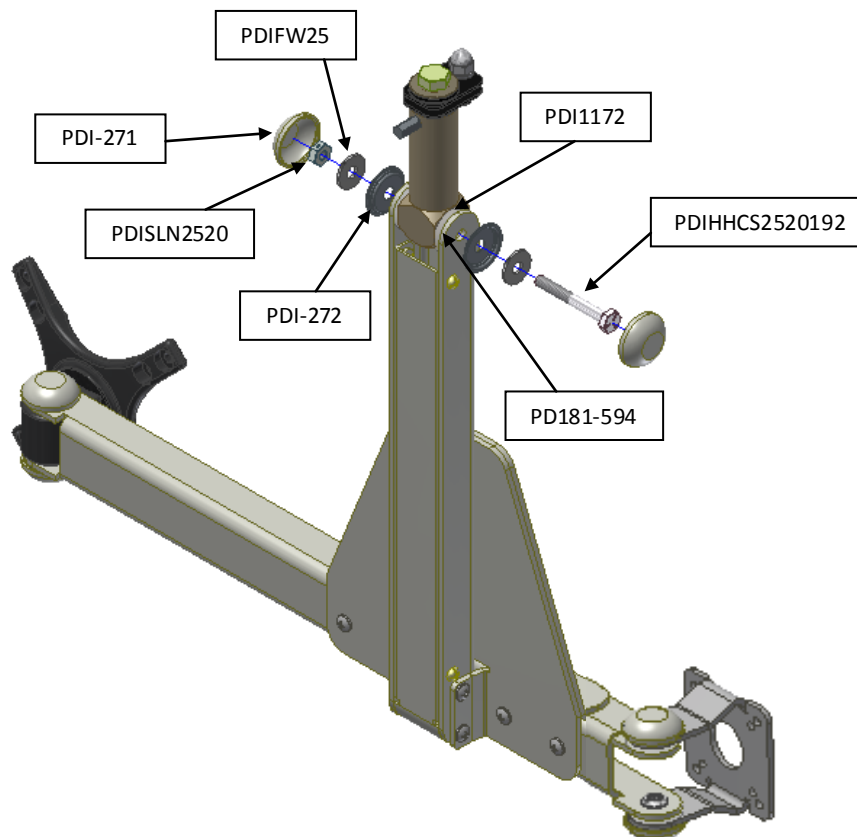
- 1) Always wear safety glasses/goggles to prevent injury from debris.
- 2) Follow the installation/removal instructions for your existing products.

TOOL LIST:

- 1) P1 or P2, Phillips screw driver
- 2) ¼" wrench
- 3) Safety glasses/goggles

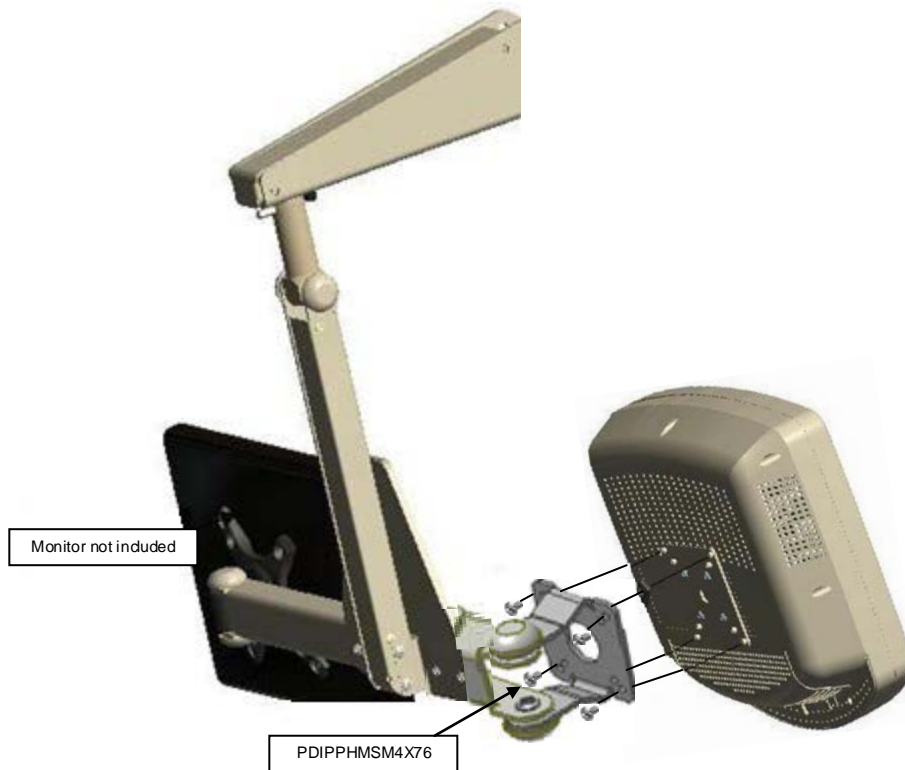
STEP 1: Mounting The Channel to the Swivel:

- 1) Place one a ¼" Flat Washer (PDIFW25) and Washer (PDI-272) onto a ¼-20 X 30" Bolt (PDIHCS 2520 192).
- 2) Place the Bolt/Washer combination into the hole on the right side of the Mounting Channel.
- 3) Place Friction Washer (PDI1172) on end of bolt.
- 4) Slide the Swivel Stem into the Mounting Channel and push the bolt through the swivel stem, but not through the left side Mounting Channel hole.
- 5) Slide the second Friction Washer between the swivel stem and left side of the Mounting Channel.
- 6) Push bolt through Friction Washer and left side whole of Mounting Channel.
- 7) Place Washer (PDI272), ¼" Flat Washer (PDIFW25) and ¼-20 Stover Lock Nut (PDISLN2520) on other end of bolt.
- 8) Wrench-tighten lock nut until desired tension is obtained.



STEP 2: Mounting the P15X TV

Attach P15X TV (PDI-P15X-CN4001A) or P14T2R using four M4X.7 6MM Phillips Head screws (PDIPPHMSM4X76).



STEP 3: Additional Monitor

Attach Monitor (not included) to VESA Mount.

PARTS LIST:

- 1) (1) PDI-P15X-CN4001A (not included)
- 2) (4) PDIPPHMSM4X76
- 4) (2) PDI-271
- 5) (1) PDIHHC5 2520 192
- 6) (2) PDIFW25
- 7) (2) PDI-272
- 8) (2) PDI1172
- 9) (2) PDISLN2520

