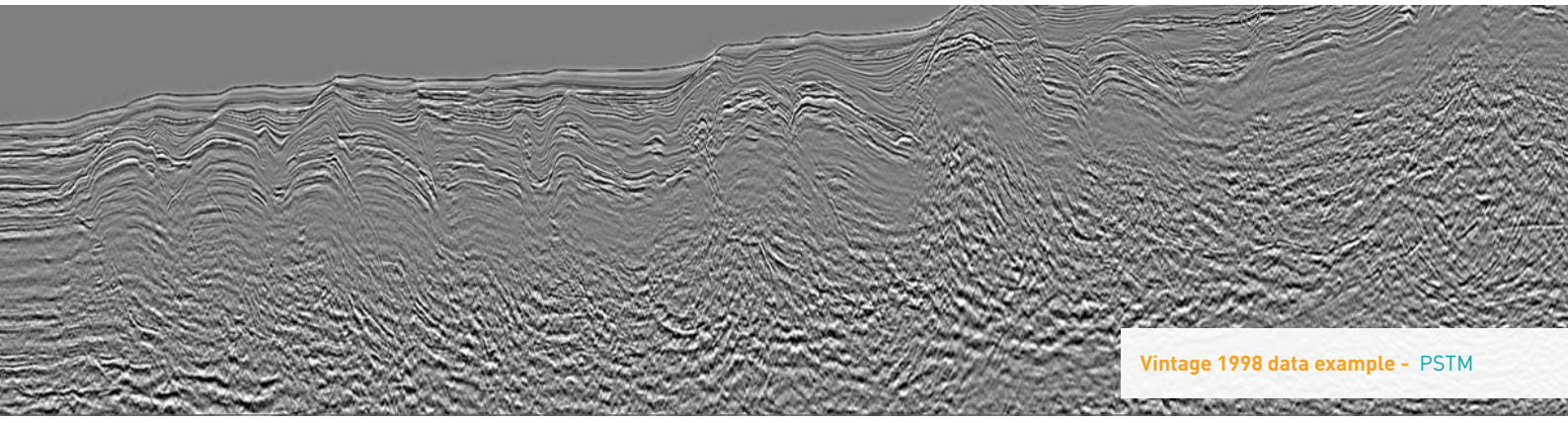


2019 NGRE 19 data example - processing 70% complete, PSTM



Vintage 1998 data example - PSTM

Nigeria

NEW NGRE19 2D Repro

Data Licensing Opportunity

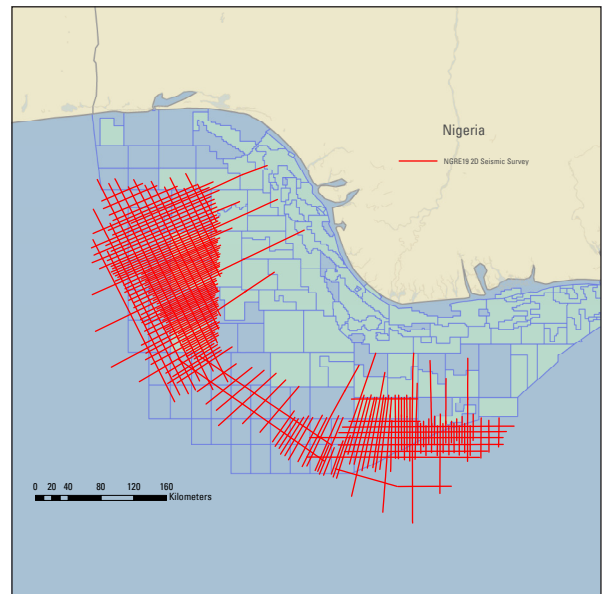
In early 2019 TGS-PetroData commenced reprocessing of the data set, to both PSTM and PSDM, utilising TGS' Clari-Fi™ processing solution.

The NGRE19 survey consists of 17,860 km of multi-client 2D seismic data offshore Nigeria. This distal-located survey covers numerous open license blocks in the deep water (+1,500 m WD) area.

Final deliverables will be available in Q4 2019 which will bring high-quality, broadband 2D seismic data to the exciting deep water offshore region.

Next Steps

To take advantage of preferential license fees, please contact TGS-PetroData for more information.



For more information, contact TGS-PetroData at:



UK Tel: +44 208 339 4200
Email: amesales@tgs.com

See the energy at TGS.com

