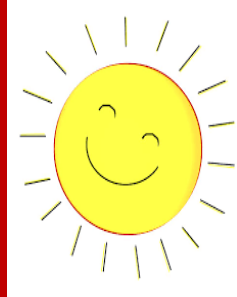




KNIGHTWATCH

March 26, 2021



**Adam
Kirsch**

FROM THE PRINCIPAL . . .

Q) Why is Jesus' death and resurrection so important?

**A) Evil and suffering are temporary –
He has already overcome.**

Our theme for the year focuses on the idea that we need to be prepared to answer the questions for the reason for the hope that we have. There are questions that non-Christians have of Christians in relation to our faith. Throughout the year we will focus on answers to these questions through a lens on the central figure to our faith – Jesus Christ.

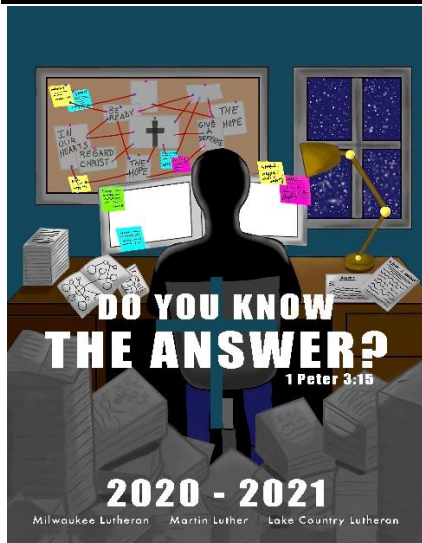
The past few weeks we have discussed why suffering happens – even amongst faithful Christians. We have seen how God can work through bad situations for our good. We have come to recognize our complete reliance on God. But removal of all of life's problems is not promised. The short-term circumstances may not be ideal, but we hold fast to the long-term assurance.

I have said these things to you, that in Me you may have peace. In the world you will have tribulation. But take heart; I have overcome the world (John 16:33).

In the midst of the storms, God promises that He has overcome the problems of this world. His death and resurrection defeated sin, death, and the devil once and for all. And because we share in His resurrection, we are guaranteed victory as well.

Our suffering, then, is temporary. It is equivalent to knowing how the book or movie ends. Knowing the conclusion of the story doesn't mean that we are not surprised by the twists and turns in getting there. However, seeing the end result also calms our fears about the current plot development.

As Christians we should be living in that faith. Good will happen to believers and un-believers alike. Bad will happen to believers and un-believers as well. However, the Christian's response can be one that is future-focused. We can continually point to the hope that exists for us. As the world sees our reaction, it should look different. As they examine why we respond the way we do, may we always be prepared to give an answer for the reason of our hope (1 Peter 3:15).



UPCOMING EVENTS . . .

April 2-5: Easter Break

April 16: Blood Drive at Mayfair Mall, pg. 6

ATTENDANCE PROCEDURES . . .

FOR ALL STUDENTS - REPORTING A STUDENT ABSENT OR LATE Absences must be reported to the Attendance Office by email attendance@milwaukeeelutheran.org OR (414) 461-6062 by 9 AM on the day of the absence.

EARLY RELEASE If you need to have your student released early, please Email attendance@milwaukeeelutheran.org or call the attendance office (414) 461-6062 **AT LEAST ONE HOUR IN ADVANCE**. Last minute calls may result in a delayed dismissal.

GETTING A MESSAGE TO A STUDENT If you need to get a message to a student, please email attendance@milwaukeeelutheran.org OR call (414) 461-6062 and a message will be sent to the student through student mail.

Please note that due to the large volume of calls and activity in the attendance office you may have to leave a message. Messages are checked often and the call will be handled accordingly. Thank you for your assistance in this matter!

ACADEMIC ADVISING . . .

STUDENT/COUNSELOR ASSIGNMENTS:

GUTTER: Freshmen E. JANOUSKY: Juniors
 SINCLAIR: Sophomores STEINKE: Seniors
 L. KOEBERT: Transition

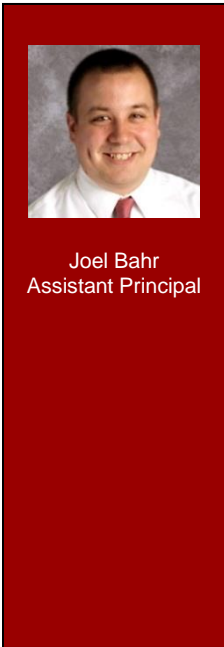
Week of March 29 – April 3

NO SCHOOL on Good Friday, April 2.

March 2021						
Su	M	Tu	W	Th	F	Sa
28	29	30	31			

April 2021						
Su	M	Tu	W	Th	F	Sa
				1	2	3

BLOCK KEY:
Yellow – EVEN
Green – ODD
Blue – ALL
Red – No School



Joel Bahr
 Assistant Principal

OFFICE of SCHOOL CULTURE/Dean of Students

Greetings,

I hope and pray that everyone enjoyed Spring Break week! It is such an exciting time as we are quickly approaching Easter Sunday when we celebrate Jesus rising from the dead. We will be having a different schedule next week. Group A is in the building Monday and Tuesday (March 29 and 30), and Group B will be in the building Wednesday and Thursday (March 31 and April 1). There will be no school on Good Friday (April 2).

I encourage you to check up on your student's grades. If you forgot how to access their grades on Skyward, please contact their academic advisor. In regards to any policies/procedures, please feel free to contact me. My contact information is jkalkopf@milwaukeeelutheran.org and 414-461-6000x205.

Arrival To School

- The earliest students can enter the building is 7:15.
- Please aim for arrival by 7:50 as classes begin at 8:00. Students need to be on time.

Dress Code

- Masks must be worn in the building. If a student is a repeat offender of not bringing a mask to school, they will be charged \$2 for a mask.
- Rips/Tears/Frays are not allowed in jeans or any other clothing
- No writing on shirts is allowed unless it is a Christian message, a team/school, or a name brand. T-shirts with musicians, movies, and tv shows are not allowed.
- If a student is out of dress code, they will not be allowed in class.

After-School Procedures

- Please continue to arrange for pick-ups to be as close to 3:20 as possible.
- Students can be on school property until 4:15.

As we celebrate Palm Sunday this Sunday the verse of encouragement I chose for today is from Luke 19:37-38 - The whole crowd of disciples began joyfully to praise God in loud voices for all the miracles they had seen: 'Blessed is the king who comes in the name of the Lord! Peace in heaven and glory in the highest!' Have a great weekend!

God's Blessings,
Mr. Joe Kalkopf
Dean of Culture



Joe Kalkopf
Dean of Culture



Marcus Jackson
Dean of Students



Chip Wylie
Counselor

ADMISSIONS...

Do you know anyone that has a current 8th grader in their family? If so, here is the MLHS Admissions process that you are welcomed to pass onto them. If they have any admissions questions, they should reach out to Mrs. Janousky, Director of Admissions, at rjanousky@milwaukeeelutheran.org



Rachel Janousky
Director of
Admissions



Checklist to Become a Red Knight

MILWAUKEE LUTHERAN HIGH SCHOOL 2021-2022 School Year

ALL STEPS must be completed for your child to attend MLHS.

You need both **ACADEMIC ACCEPTANCE** and a **CHOICE SEAT or TUITION PLAN** to be accepted and enrolled at MLHS.

- Complete an online application** at www.milwaukeeelutheran.org. Click on Admissions tab at the top and “Get Started.”
- Register for a Placement Exam.** Students will register to take the Placement Exam on the online application.
- Take a **VIRTUAL Placement Exam** at MLHS (upcoming dates are either December 5th or January 23)
- After a Placement Test has been taken, you will receive your test results and a **Next Step Letter**.
If academically accepted, you will be prompted to finish an enrollment form. To enroll, either log back into your online application or use the link found in your ‘New Student Welcome’ email.

Remember to set up a payment plan in February! (see next step)

- Starting February 1, 2021, apply for a **Choice Seat** OR set up a **Tuition Payment Plan**:
 - Choice:** Apply online for a MPCP seat (February 1 – 22, April 1 – 20, July 1 – 20, 2021) or a WPCP seat (February 1, – April 15, 2021). When Choice Seats are filled, a wait list will be started.
APPLY EARLY! (see Milwaukee/Wisconsin Parental Choice Programs sheet)
 - Tuition:** After being academically accepted, enroll & set up a billing agreement. To enroll, either log back into your online application or use the link found in your ‘New Student Welcome’ email.
- Select Classes.** We will contact you in the Spring to sign up for a Freshman Course Selection Night only **AFTER Academic Acceptance AND a Choice Seat or Tuition Plan** are verified.

9700 W Grantosa Drive Milwaukee, WI 53222
www.MilwaukeeLutheran.org
Phone: 414-461-6000 Fax:414-461-2733

ATHLETICS . . .

Milwaukee Lutheran Athletics Week of March 29th to April 3rd :

Please refer to our website for Athletic events:

www.RedKnightAthletics.org



John Ellenberger
Athletic Director

STUDENT ACTIVITIES . . .

Thank you to everyone who came out to join us for our HOCO GLOW Party at SkyZone! We had a great time!

Blood Drive: Student Council's Community Service Committee will be hosting another Blood Drive at Mayfair Mall on Friday, April 16th. Please consider coming out to donate and save lives! See the flyer for more details.



Rachel
Vonderheide
Student Activities
Director



Community Blood Drive

**Friday, April 16, 2021
11:00 am to 4:00 pm**

**Mayfair Mall Professional Tower - 6th Floor
2500 N. Mayfair Rd.**

For an appointment, please visit redcrossblood.org and enter sponsor code: Mayfair. Or, call 1-800-RED CROSS (1-800-733-2767). Appointments strongly encouraged for social distancing measures.

By donating at this blood drive, you are helping two graduating seniors earn a scholarship. This blood drive is organized by Milwaukee Lutheran High School Student Council's Community Service Committee.

Download the Blood Donor App | RedCrossBlood.org | 1-800-RED CROSS | 1-800-733-2767

© 2020 The American Red Cross | 275801-MS-15

CURRENT NEWS . . .

YEARBOOK AD'S DEADLINE EXTENDED!! Do you want to shout out your senior son or daughter in the yearbook for them to remember for years to come? Or advertise your company/business for future prospects in high schoolers? You can purchase a full page, half, quarter, or even an eighth of a page, in full color. Contact Mrs. Tennies @ ktennies@milwaukeeelutheran.org for more information and the form to fill out. **“Yearbook Ad” deadline is extended until March 27th, 2021.**

LAST CHANCE TO BUY A YEARBOOK is May 7th, 2021! Purchasing a yearbook is fast and easy! Visit www.jostens.com/yearbook to purchase your child a yearbook for this year. The cost is only \$65 - but you *must* purchase one before May 7th! We have limited available after May so check that off the “to do list” now before it’s too late! Questions - email Mrs. Tennies the Yearbook Advisor at any time at ktennies@milwaukeeelutheran.org

HEY JUNIORS!



COLLEGE POSSIBLE IS RECRUITING STUDENTS AT YOUR SCHOOL

IF YOU ARE...

- + A junior (graduating in 2022)
- + Have a cumulative GPA of 2.0+
- + Interested in pursuing a Bachelor’s Degree

We offer support on:

- College exploration
- ACT registration and preparation
- College applications
- Financial aid & more!

...APPLY FOR COLLEGE POSSIBLE TODAY!

Go to CollegePossible.org/Join and complete the online application.
Questions? Email AMiner@CollegePossible.org



- MONDAY, Mar. 29** – Cheeseburger, Potatoes
- TUESDAY, Mar. 30** – Chicken Tenders, Tater Tots
- WEDNESDAY, Mar. 31** – Cheeseburger, Potatoes
- THURSDAY, Apr. 1** – Chicken Tenders, Tater Tots
- FRIDAY, Apr. 2** – Good Friday, No School
- MONDAY, Apr. 5** – Easter Monday, No School
- TUESDAY, Apr. 6** – Brat, Corn Dog, Fries
- WEDNESDAY, Apr. 7** – Chicken Patty, Hash Brown
- THURSDAY, Apr. 8** – Brat, Sloppy Joe, Fries
- FRIDAY, Apr. 9** – Chicken Patty, Hash Brown

PARKING LOT SAFETY: For the safety of all our students and parents, please find below a few reminders about dropping off/picking up your student(s) in the morning and after school.

1. When picking up after school, please **DO NOT** park between the orange cones. This area is designated for the buses.
2. When dropping off in the morning, you may pull up next to the canopy or next to the parking lot. Please **DO NOT stop in the middle of the driveway** – this causes congestion.
3. Please **DRIVE SLOWLY** at all times and watch for pedestrians crossing.

“THANK YOU FOR BEING A COURTEOUS AND SAFE DRIVER”

