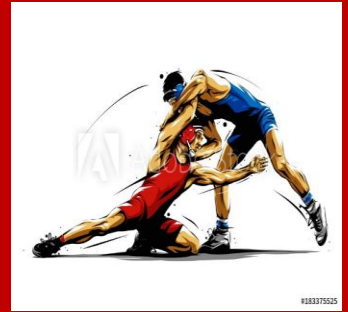




KNIGHTWATCH

February 25, 2022



**Adam
Kirsch**

FROM THE PRINCIPAL . . .

God sends us when God creates opportunities

God has created each of us as His people. He has redeemed us from the eternal weight of our sin. He has called us to His purposes. We have covered each of those concepts throughout this year. But God also puts us into the situations and opportunities where He needs us.

He has created us for the opportunities that we encounter daily. Nothing is circumstance or accident. The people that we interact with, the time and place in which we live, and situations we find ourselves in – all are by His design. He has put before us a purpose and a mission to serve our neighbor. We are created to use the opportunities given to serve others in good works. Martin Luther said it this way: “God does not need your good works, but your neighbor does.”

For we are his workmanship, created in Christ Jesus for good works, which God prepared beforehand, that we should walk in them (Ephesians 2:10)

Who gave himself for us to redeem us from all lawlessness and to purify for himself a people for his own possession who are zealous for good works. (Titus 2:14)

We are called to be passionate about carrying out the calling of God for the benefit of those around us. Throughout history, those who have served others using the gifts of God have brought Him glory. We too are called to hear that calling and use the opportunities God gives to us. (Isaiah 6:8)

On Tuesday, March 1st the City Mask Mandate is being allowed to expire. With the local and national trends showing an overall decline in COVID rate and positive testing, Milwaukee Lutheran High School will return to “Mask-Optional” environment for all adults and students in the building beginning Tuesday, March 1st.



UPCOMING EVENTS . . .

- 3/3 Parent/Teacher Conferences, 5:00-7:30 pm
- 3/4 Parent/Teacher Conferences, 7:30-9:30 am

- 3/5 Band Concert, 2:00 pm

- 3/8 Junior Class ACT Testing, 12:45 pm Early Release
FR, SO, SR classes- Remote Learning day

ATTENDANCE PROCEDURES . . .

REPORTING A STUDENT ABSENT OR LATE Absences must be reported to the Attendance Office by email attendance@milwaukeeelutheran.org OR (414) 461-6062 by 9 AM on the day of the absence.

EARLY RELEASE If you need to have your student released early, please

Email attendance@milwaukeeelutheran.org or call the attendance office (414) 461-6062 **AT LEAST ONE HOUR IN ADVANCE**. Last minute calls may result in a delayed dismissal.

GETTING A MESSAGE TO A STUDENT If you need to get a message to a student please email attendance@milwaukeeelutheran.org OR call (414) 461-6062 and a message will be sent to the student through student mail.

Please note that due to the large volume of calls and activity in the attendance office you may have to leave a message. Messages are checked often and the call will be handled accordingly.

Thank you for your assistance in this matter!

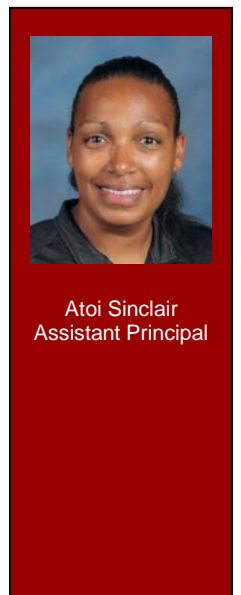
ACADEMIC ADVISING . . .

STUDENT/COUNSELOR ASSIGNMENTS:

LASLEY: Freshmen	E. JANOUSKY: Juniors/Seniors
GUTTER: Sophomores	STEINKE: Juniors/Seniors
L. KOEBERT: Transition	

JUNIORS AND SENIORS – Now is the time to start thinking about COLLEGE!! The following colleges will be visiting our school in the near future. You MUST sign up with Mrs. Ebben in the Advising Office at least 2 days prior to the college visit.

- Tuesday, March 1st – **Concordia Mequon**, 9:36 am
- Tuesday, March 1st – **Edgewood College**, 9:36 am
- Wednesday, March 9th – **Concordia Chicago**, 2nd & 3rd lunch
- Tuesday, March 15th – **WCTC**, 9:36 am
- Tuesday, March 15th – **UW Milwaukee**, 9:36 am
- Tuesday, March 29th – **Marquette University**, 9:36 am
- Tuesday, April 12th – **MSOE**, 9:36 am



OFFICE of SCHOOL CULTURE/Dean of Students

Greetings,

Reminder that parent-teacher conferences will be held Thursday night, March 3, and Friday morning, March 4. This is such a great opportunity for there to be face-to face communication for parents and teachers to discuss students' education. I look forward to seeing many parents on Thursday or Friday.

We had a special Black History Month assembly this morning. It was great to see so many students involved as they focused on Black Excellence. I encourage you to talk to your student about the message from this morning.

Every month each department at MLHS selects a Student of the Month. Congratulation to our January winners:

- | | |
|---------------------------------|-------------------------------|
| Ty'lei Addison-Curtis (English) | Ny'emia Rodgers-Evans (Music) |
| Armani Chambers (Art) | Breia Rush (Business) |
| Solomon Demby (SR) (Tech Ed) | Jaylyn Sims (Religion) |
| Malek Edwards (Social Studies) | Skye Spsychala (P.E.) |
| Aniyah Gibbs (Spanish) | Izaiah Williams (Science) |
| Jeremy Hood (Math) | Terrence Williams (Resource) |

Below are some reminders of school policies. If you have any questions about policies/procedures, please contact me at 414-461-6000X205 or jkalkopf@milwaukeeelutheran.org

BEFORE SCHOOL

-Please have your student arrive at school by 7:50 to give them plenty of time to get to their first class.

ATTENDANCE

-If your student is absent, please contact the attendance office at 461-6062.

-We expect all students to be on time to all of their classes. If a student accumulate more than 5 late marks in a week, they will receive consequences.

DRESS CODE

-Our 2 biggest issues deal with jeans and hooded sweatshirts. We do not allow jeans that have frays, tears or rips in them. We do not allow hoods to be worn up.

PHONES/EAR BUDS

-Phones/ear buds should not be out during the school day. If a staff member sees it without permission, the student must hand the phone over and the student will get it back at the end of the day. If you need to get ahold of your student, please call the attendance office at 461-6062.

DELIVERIES

-Door Dash and other delivery services are not allowed.

AFTER SCHOOL

-The school day ends at 3:20. Please have your student picked up near this time.

The verse of encouragement I would like to leave with you is from Genesis 1:27 "So God created man in his own image, in the image of God he created him; male and female he created them". Have a great weekend!

God's Blessings,
Mr. Joe Kalkopf
MLHS Dean of Culture



Joe Kalkopf
Dean of Culture



Marcus Jackson
Dean of Students



Chip Wylie
Counselor

ADMISSIONS . . .



We want you to become a
RED KNIGHT



MILWAUKEE LUTHERAN
HIGH SCHOOL

Free to apply now!



[www.milwaukeeelutheran.org/
get-started](http://www.milwaukeeelutheran.org/get-started)

Choice Application

MPCP - Feb. 1-21, 2022
WPCP - Feb. 1-April 21, 2022



<https://dpi.wi.gov/choice>



Rachel Janousky
Director of
Admissions

STUDENT ACTIVITIES . . .

Staff vs Student Basketball Game! Mark your calendar for Monday, March 14th! MLHS's staff will be taking on the students in a full basketball game at 4pm! Help us fill the stands and cheer on the teams! Members of our varsity boys' and girls' teams will be coaching!

Blood Drive: Student Council's Community Service Committee will be hosting a blood drive on Thursday, March 17th. Stay tuned for information on how you can sign up to donate.

Talent Show! Save the date for our Talent Show on Thursday, April 28th! (Please note the date change.) If you are interested in auditioning, see Miss Vonderheide. Auditions will take place the first week in April.

If you are interested in attending Prom this year but do not have access to a dress, please see the announcement on the next page from Melissa Mariscal, Volunteer Coordinator for the Cinderella Project MKE.



Rachel
Vonderheide
Student Activities
Director



Cinderella Project MKE

We are back and better than ever!
We want to help make your prom
unforgettable! Receive a FREE prom
dress and more!

www.cinderellaprojectmke.com
for more Info

**Cinderella Project MKE is back
for Prom 2022! SAVE THE DATE
April 2nd!**

I am with the organization known as EmPOWER YOUth Foundation. We are a charitable organization whose mission is to eliminate negative barriers affecting youth and their families; replacing these obstacles by fostering self-esteem with positive experiences that build autonomy, while enhancing the community.

The Cinderella Project MKE has been our annual event since our organization's inception. We have helped send over 1,000 girls to prom! Prom is an important time for any high school student. We aim to help alleviate some of the costs by providing a free prom dress to deserving young ladies in the community. Our goal is to instill self confidence and self worth with our workshops, which we hope will lead to good decision making during this important time in their lives. Their day starts with a fun and informative workshop. We want them to know how strong, smart and beautiful they are! Afterwards they will meet their "fairy godmother" who will help them select from the thousands of dresses to find the perfect one.

Applications will be open March 1st. We received a very generous donation from Macy's department store of brand new dresses that will allow us to help so many more applicants than ever before. We will have music, food, giveaways and even hair and makeup.

Visit www.cinderellaprojectmke.com
for more information.

ATHLETICS . . .

Milwaukee Lutheran Athletics Week of February 28th to March 5th :

Please refer to our website for Athletic events:

www.RedKnightAthletics.org

SPRING SPORTS are less than two weeks away! **All athletes should be registered on-line and have a current physical turned in before the first day of practice.** For those that did not play a fall or winter sport, this is a new registration site. The directions below will walk you through the registration.

Athletes who participated in a fall or winter sport need to log in to their existing family account, select the student they wish to register, and fill out any missing details. You should **not create a “new student” if the registrant participated in a fall or winter sport.**

The only stipulation to that is if Child "1" participated in fall or winter sports and now child "2" wants to participate in spring, the family should still log in to their existing account, then create a new student within their family account.

Athletes that **did not participate in the fall or winter** should create a new family account. Please use the steps below:

1. **Go to redknightathletics.org**
Select “Activity Registration”
2. **Set up a Parent Account**
*Once the account is set up, please go to your email that you entered in the set-up and follow the directions to confirm your account. **This must be done before you can proceed.***
3. Now you will be at the point where you will fill out the registration.
Please note: **you will need to enter your student’901s full name and date of birth.**
Ex: If your student’s name Johnathon Smith-Walker you must enter exactly that.
Not: Johnny Smith or Johnathon Walker
4. In step 4 you will be prompted to upload your physical form completed and signed by your doctor and parent. You may skip this step if you plan to bring your physical to the office.
5. Complete all seven steps in the registration. At the end of the registration is where you will pay the Sports fee by credit card. *Please note: that until the sports fee is paid, your registration is not complete. If your athlete does not make a team, your sports fee will be refunded.*
6. Once you have submitted your registration, you will be sent a confirmation email notifying you of your registration completion. Your registration will say “pending” until it is cleared by the Athletic office.

****All Athletes must be registered and have their physical submitted before the first day of practice.****

Start Dates for Spring Sports:

Track March 7
Softball March 14
Baseball March 21
Soccer—Girl’s March 21
Tennis—Boy’s March 28

Please contact the athletic office with any questions at

lradowahn@milwaukeeelutheran.org or 414/461-6000 ext. 200



Todd Albers
Athletic Director

CURRENT NEWS . . .

On Tuesday, March 1st the City Mask Mandate is being allowed to expire. With the local and national trends showing an overall decline in COVID rate and positive testing, Milwaukee Lutheran High School will return to "Mask-Optional" environment for all adults and students in the building beginning Tuesday, March 1st.

MILWAUKEE LUTHERAN BAND BACK FROM FLORIDA TOUR



Milwaukee Lutheran's touring band, along with chaperones, recently return from Florida, the first band tour since prior to Covid. The band participated in the Music and Art of Foley Workshop at Universal Studios, where students created an entire scene of *Despicable Me*, from music to voice overs to sound effects. At Disney's Soundscapes Workshop, band members learned new

music in two and one-half hours, then recorded the soundtrack to a scene from the movie *Tangled*. The students enjoyed the parks at Universal Studios and Disney World. The weather was not always sunny, but it was warmer than Wisconsin! For many students, it was a travel adventure filled with new opportunities to learn and grow. We are all looking forward to another band tour in 2024!



Chris Marshall, Band Director

YEARBOOKS – Don't forget to purchase your yearbook for the school year! Order online on Jostens.com or see Mrs. Tennes for more info on how to order!

Basketball, Wrestling, Swim, and Cheerleading are fundraising!

The 2021 winter season is underway, and we are reaching out to YOU for support. Your generosity and backing have been essential in providing exceptional experiences for our student-athletes. To support the athletes, click on this link and share it with your family and friends. Go Red Knights! [Click here to support your team.](#)

Great news! Did you know that you can advertise your business and help Milwaukee Lutheran Athletics at the same time through our Athletics Sponsorship/Advertising program? Whether through partner sponsorships or single sport advertising, Milwaukee Lutheran High School is looking to team up with local companies to advertise their business through various media outlets, including signage, program event advertising and social media advertising, to name a few. All proceeds will go to support the sports programs at Milwaukee Lutheran High School. Want to learn more? Contact Preston Hoffman at phoffman@lhsagm.org; or at (414) 418-7638 for further information. What a fantastic way to showcase your business where exceptional experiences happen!



MONDAY, Feb. 28 – Cheeseburger
TUESDAY, Mar. 1 – Spicy Chicken Sandwich
WEDNESDAY, Mar. 2 – Chicken Fajita Wrap
THURSDAY, Mar. 3 – Bratwurst
FRIDAY, Mar. 4 – No School, Professional Development
MONDAY, Mar. 7 – Chili Cheese Dogs
TUESDAY, Mar. 8 – Junior ACT Testing, No Lunch
WEDNESDAY, Mar. 9 – Burritos
THURSDAY, Mar. 10 – Meatball Subs
FRIDAY, Mar. 11 – Stir Fry w/Veggies

SNOW DAYS In the event severe weather conditions would occur, please check one of the local media outlets for information on school closings. **Our recommendation is that you check the WTMJ website (www.todaystmj4.com) for the earliest and most up-to-date information.** Other media outlets broadcasting school closings include:

Television: WTMJ-4, FOX-6, WISN-12, CBS-58
Radio: 94.5 KTI Country, 620WTMJ
Internet: fox6now.com/weather, WISN.com, cbs58.com

Since our students come from many parts of the metropolitan area, weather conditions may vary from one area to another. Please use discretion in sending your child to school even though school may be in session. A guideline to use in making your decision would be the decision that your local public school district has made. (Example: If you live in Cedarburg and the Cedarburg school district has closed due to the weather, consider keeping your child home from school that day.)

In the event that a sudden snowstorm forces school to close before the regular closing time, make certain that your child knows exactly where to go and what to do should no one be home during the school day.