



KNIGHTWATCH

January 8, 2021



**Adam
Kirsch**

FROM THE PRINCIPAL . . .

Q) Why is Jesus' death and resurrection so important?

A) It is our victory also.

Our theme for the year focuses on the idea that we need to be prepared to answer the questions for the reason for the hope that we have. There are questions that non-Christians have of Christians in relation to our faith. Throughout the year we will focus on answers to these questions through a lens on the central figure to our faith – Jesus Christ.

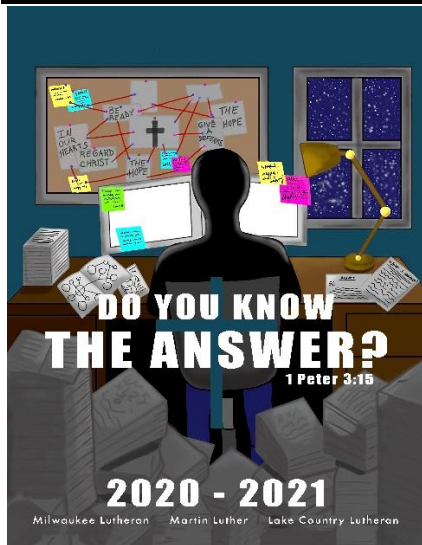
Your surname means something – you are linked to someone. At birth, we are linked to our parent(s). If family circumstances change our name may change that links us again. At marriage, two individuals become one flesh and a name is changed to reflect that new union. That name and the associated link means something. Our identity, reputation, and inheritable rights are often affected by it.

We have another name written on our hearts also. It doesn't change after being given to us in our baptism. It is a name that is written in the Book of Life which guarantees the right to put a claim on its inheritable promises. It is the name of Christian. It is written on our hearts and one that grants us forgiveness and eternal life.

Those rights were won through the death and resurrection of Jesus Christ. Through the blood of sacrifice we have been linked as sons and daughters to our Heavenly Father. In Christ's victory over death, we receive the rewards of the promise of God.

For if we have been united with Him in a death like His, we shall certainly be united with Him in a resurrection like His. (Romans 6:5)

Our sin became Christ's sin. Our death was His death. His victory became our victory. His life has become our life. His promises have become our hope (1 Peter 3:15).



UPCOMING EVENTS . . .

January 18: No School, MLK Day

January 20: GLOW Night at Sky Zone, 7 - 9 pm

January 29: Paint Night, 4 – 6 pm

February 16: Roller Skate Night, 6:30 – 8:30 pm

SNOW DAYS In the event severe weather conditions would occur, please check one of the local media outlets for information on school closings. **Our recommendation is that you check the WTMJ website (www.todaystmj4.com) for the earliest and most up-to-date information.** Other media outlets broadcasting school closings include:

Television: WTMJ-4, FOX-6, WISN-12, CBS-58

Radio: 94.5 KTI Country, 620WTMJ

Internet: fox6now.com/weather, WISN.com, cbs58.com

Since our students come from many parts of the metropolitan area, weather conditions may vary from one area to another. Please use discretion in sending your child to school even though school may be in session. A guideline to use in making your decision would be the decision that your local public school district has made. (Example: If you live in Cedarburg and the Cedarburg school district has closed due to the weather, consider keeping your child home from school that day.)

In the event that a sudden snowstorm forces school to close before the regular closing time, make certain that your child knows exactly where to go and what to do should no one be home during the school day.

ATTENDANCE PROCEDURES . . .

FOR ALL STUDENTS - REPORTING A STUDENT ABSENT OR LATE Absences must be reported to the Attendance Office by email attendance@milwaukeekeelutheran.org OR (414) 461-6062 by 9 AM on the day of the absence.

EARLY RELEASE If you need to have your student released early, please

Email attendance@milwaukeekeelutheran.org or call the attendance office (414) 461-6062 **AT LEAST ONE HOUR IN ADVANCE**. Last minute calls may result in a delayed dismissal.

GETTING A MESSAGE TO A STUDENT If you need to get a message to a student, please

email attendance@milwaukeekeelutheran.org OR call (414) 461-6062 and a message will be sent to the student through student mail.

*****Please note that due to the large volume of calls and activity in the attendance office you may have to leave a message. Messages are checked often and the call will be handled accordingly.***** Thank you for your assistance in this matter!

ACADEMIC ADVISING . . .

STUDENT/COUNSELOR ASSIGNMENTS:

GUTTER: Freshmen E. JANOUSKY: Juniors
SINCLAIR: Sophomores STEINKE: Seniors
L. KOEBERT: Transition

Week of January 11 – January 16

January 2021						
Su	M	Tu	W	Th	F	Sa
10	11	12	13	14	15	16

BLOCK KEY:
Yellow – EVEN
Green – ODD
Blue – ALL
Red – No School



Joel Bahr
Assistant Principal

OFFICE of SCHOOL CULTURE/Dean of Students

Greetings,

We are back! I hope everyone had a great Christmas break as we celebrated the birth of Our Savior. 2nd Semester has begun. The 8 classes that a student has in 2nd Semester will look different than 1st Semester. I encourage parents to take note of the new classes and the new teachers that your son/daughter has. It is extremely important for students to get off to a great start this semester; it is a fresh start for everyone. Please contact me if you have any questions regarding policies/procedures. My contact information is jkalkopf@milwaukeeelutheran.org and 414-461-6000x205.

Arrival To School

- The earliest students can enter the building is 7:15.
- Please aim for arrival by 7:50 as classes begin at 8:00. Students need to be on time.

Dress Code

- Masks must be worn in the building. If a student is a repeat offender of not bringing a mask to school, they will be charged \$2 for a mask.
- Rips/Tears/Frays are not allowed in jeans or any other clothing
- No writing on shirts is allowed unless it is a Christian message, a team/school, or a name brand. T-shirts with musicians, movies, and tv shows are not allowed.
- If a student is out of dress code, they will not be allowed in class.

Parking Permit/Driving

- If a student is parking in the school parking lot, they need to either renew their permit from last year or get a parking permit. The cost is \$10. Please see Ms. Adams regarding parking permits.
- Students that are driving should review our Parking Lot Regulations/Violations on p. 127 in the school planner.

After-School Procedures

- Please continue to arrange for pick-ups to be as close to 3:20 as possible.
- Students can be on school property until 4:15.

The verses of encouragement I chose for today are from Ephesians 4:2-3: ""Be completely humble and gentle; be patient, bearing with one another in love. Make every effort to keep the unity of the Spirit through the bond of peace." Have a great weekend!

God's Blessings,
Mr. Joe Kalkopf
Dean of Culture



Joe Kalkopf
Dean of Culture



Marcus Jackson
Dean of Students



Chip Wylie
Counselor

School Hours

8:00 am – 3:20 pm

School Office Hours

7:30 am – 4:00 pm



MILWAUKEE LUTHERAN HIGH SCHOOL

2020-2021 Calendar

August

25 First Full Day – All Students

September

7 No School – Labor Day

October

2 6 Week Progress Point
8 Fall Open House
15 Parent-Teacher Conf. (PM)
16 No School – Parent-Teacher Conf.

November

5 Fall Open House
6 No School – Professional Dev.
13 12 Week Progress Point
25-27 No School – Thanksgiving

December

18, 21-22 Final Exams
23-31 No School – Christmas Break

January

1-5 No School – Christmas Break
6 First Day of Second Semester
18 No School – MLK Day

February

5 No School – Professional Dev.
19 6 Week Progress Point

March

11 Parent-Teacher Conf. (PM)
12 No School – Parent-Teacher Conf.
15-19 No School – Spring Break

April

2 No School – Good Friday
5 No School – Easter Monday
9 12 Week Progress Point
26 No School – Professional Dev.

May

27-28 Final Exams
29 Graduation (9:00 AM)

www.milwaukeeelutheran.org

Telephone: (414) 461-6000

Attendance: (414) 461-6062

Fax: (414) 461-2733

August 2020

Su	M	Tu	W	Th	F	Sa
						1
2	3	4	5	6	7	8
9	10	11	12	13	14	15
16	17	18	19	20	21	22
23	24	25	26	27	28	29
30	31					

September 2020

Su	M	Tu	W	Th	F	Sa
		1	2	3	4	5
6	7	8	9	10	11	12
13	14	15	16	17	18	19
20	21	22	23	24	25	26
27	28	29	30			

October 2020

Su	M	Tu	W	Th	F	Sa
				1	2	3
4	5	6	7	8	9	10
11	12	13	14	15	16	17
18	19	20	21	22	23	24
25	26	27	28	29	30	31

November 2020

Su	M	Tu	W	Th	F	Sa
1	2	3	4	5	6	7
8	9	10	11	12	13	14
15	16	17	18	19	20	21
22	23	24	25	26	27	28
29	30					

December 2020

Su	M	Tu	W	Th	F	Sa
		1	2	3	4	5
6	7	8	9	10	11	12
13	14	15	16	17	18	19
20	21	22	23	24	25	26
27	28	29	30	31		

January 2021

Su	M	Tu	W	Th	F	Sa
					1	2
3	4	5	6	7	8	9
10	11	12	13	14	15	16
17	18	19	20	21	22	23
24	25	26	27	28	29	30
31						

February 2021

Su	M	Tu	W	Th	F	Sa
	1	2	3	4	5	6
7	8	9	10	11	12	13
14	15	16	17	18	19	20
21	22	23	24	25	26	27
28						

March 2021

Su	M	Tu	W	Th	F	Sa
	1	2	3	4	5	6
7	8	9	10	11	12	13
14	15	16	17	18	19	20
21	22	23	24	25	26	27
28	29	30	31			

April 2021

Su	M	Tu	W	Th	F	Sa
				1	2	3
4	5	6	7	8	9	10
11	12	13	14	15	16	17
18	19	20	21	22	23	24
25	26	27	28	29	30	

May 2021

Su	M	Tu	W	Th	F	Sa
						1
2	3	4	5	6	7	8
9	10	11	12	13	14	15
16	17	18	19	20	21	22
23	24	25	26	27	28	29
30	31					

BLOCK KEY:
Yellow – EVEN
Green – ODD
Blue – ALL
Red – No School

SHARING JESUS. SHAPING LIVES. DEVELOPING LEADERS.

11/10/2020

ADMISSIONS...

Do you know anyone that has a current 8th grader in their family? If so, here is the MLHS Admissions process that you are welcomed to pass onto them. If they have any admissions questions, they should reach out to Mrs. Janousky, Director of Admissions, at rjanousky@milwaukeekeelutheran.org



Checklist to Become a Red Knight

MILWAUKEE LUTHERAN HIGH SCHOOL 2021-2022 School Year

ALL STEPS must be completed for your child to attend MLHS.

You need both **ACADEMIC ACCEPTANCE** and a **CHOICE SEAT or TUITION PLAN** to be accepted and enrolled at MLHS.

- ☐ **Complete an online application** at www.milwaukeekeelutheran.org. Click on Admissions tab at the top and "Get Started."
- ☐ **Register for a Placement Exam.** Students will register to take the Placement Exam on the online application.
- ☐ Take a **VIRTUAL Placement Exam** at MLHS (upcoming dates are either December 5th or January 23)
- ☐ After a Placement Test has been taken, you will receive your test results and a **Next Step Letter**.
If academically accepted, you will be prompted to finish an enrollment form. To enroll, either log back into your online application or use the link found in your 'New Student Welcome' email.

Remember to set up a payment plan in February! (see next step)

- ☐ Starting February 1, 2021, apply for a **Choice Seat** OR set up a **Tuition Payment Plan**:
 - ☐ **Choice:** Apply online for a MPCP seat (February 1 – 22, April 1 – 20, July 1 – 20, 2021) or a WPCP seat (February 1, – April 15, 2021). When Choice Seats are filled, a wait list will be started.
APPLY EARLY! (see Milwaukee/Wisconsin Parental Choice Programs sheet)
 - ☐ **Tuition:** After being academically accepted, enroll & set up a billing agreement. To enroll, either log back into your online application or use the link found in your 'New Student Welcome' email.
- ☐ **Select Classes.** We will contact you in the Spring to sign up for a Freshman Course Selection Night only AFTER Academic Acceptance AND a Choice Seat or Tuition Plan are verified.

9700 W Grantosa Drive Milwaukee, WI 53222
www.Milwaukeekeelutheran.org
Phone: 414-461-6000 Fax: 414-461-2733



Rachel Janousky
Director of
Admissions

If you know any prospective MLHS 9th grade families for the 2021-22 school year, feel free to pass on this following invite to them.

MILWAUKEE LUTHERAN HIGH SCHOOL ADMISSIONS

Virtual Q&A

Tuesday, January 12th

7:00 am | 12:00 pm | 6:00 pm

Pick ONE timeslot that works best for you for an estimated 30-minute Zoom meeting.

Grab your coffee, lunch, or appetizer, and learn about Milwaukee Lutheran! Rachel Janousky, Director of Admissions, will lead the discussions about the high school, the admission process, and how to apply for choice & financial aid.



<https://zoom.us/j/96026832226>

SCAN ME



ATHLETICS . . .

Milwaukee Lutheran Athletics Week of January 11th to January 16th :

Please refer to our website for Athletic events:

www.RedKnightAthletics.org



John Ellenberger
Athletic Director

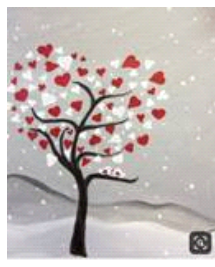
STUDENT ACTIVITIES . . .

GLOW Night at Sky Zone: Your Student Council has a fun new event planned just for you! Join us for a Glow in the Dark night at Sky Zone in Waukesha on Wednesday, January 20th! A significant portion of all admission sales will go towards this year's PROM! Details are below!

**Please note: masks will be required at all times.*

- **Location** – Sky Zone, W229 N 1420 Westwood Dr, Waukesha, WI
- **Date & Time** – Wednesday, January 20th @ 7:00-9:00pm
- **Cost** – \$27.99 (+ \$3.99 if you don't bring your own jump socks)
- **Who** – This event is open to ALL MLHS supporters! Bring your family and friends! Just mention MLHS at the door!
- **Details** – We will have the building to ourselves! Admission includes 2 hours of non-stop jumping fun and the required glow in the dark shirt!

Paint Night: Join us on Friday, January 29th for an evening of painting! Mrs. Tennes will walk us through a beautiful, Valentine's-themed painting (image below). The event will run from 4:00-6:00pm in the cafeteria. The cost is \$10 per student, which includes all of the items needed to create your masterpiece! Space is limited for this event, and students must register in advance. Registration will close on 1/25. Sign up now to reserve your spot!



- To register and pay, follow this link to access Efunds: <https://payments.efundsforschools.com/v3/districts/56396/>
- Directions:
 - Select "Login" or "Create Account" on the left side of the screen
 - Log in or create your account
 - Select "Pay for Optional Fees"
 - Select your student
 - Click "Begin Checkout" and follow the prompts to pay

Roller Skate Night: Since skate night was such a success last fall, we've decided to host another event this February! Join us for some skating fun at Butler Skateland on Tuesday 2/16 @ 6:30-8:30pm. This event is for current MLHS students only, and school IDs will be checked at the door. The cost per student is \$10, which includes your skate rental and 2 hours of skating. Students must pre-register for the event. Registration will be open from 2/1 – 2/12, but be sure to mark those calendars today!

**Please note: masks will be required at all times.*



Rachel
Vonderheide
Student Activities
Director

CURRENT NEWS CONTINUED. . .

LAST CALL TO BUY AN AD IN THE YEARBOOK FOR YOUR SENIOR OR BUSINESS!! Do you want to shout out your senior son or daughter in the yearbook for them to remember for years to come? Or advertise your company/business for future prospects in high schoolers? You can purchase a full page, half, quarter, or even an eighth of a page, in full color. Contact Mrs. Tennies @ ktennies@milwaukeeelutheran.org for more information and the form to fill out. **"Yearbook Ad" deadline is extended until February 19th, 2021.**

LAST CALL TO BUY A YEARBOOK - is March 1st, 2021! Purchasing a yearbook is fast and easy! Visit www.jostens.com/yearbook to purchase your child a yearbook for this year. The cost is only \$65 - but you must purchase one before March 1st! We have limited available after March so check that off the "to do list" now before it's too late! Questions - email Mrs. Tennies the Yearbook Advisor at any time at ktennies@milwaukeeelutheran.org



MARTIN LUTHER:
Evening Housekeeping - Part-Time
Weekend Housekeeping - Part-Time

LAKE COUNTRY LUTHERAN:
Weekend Housekeeping - Part-Time

TRIUN3:
Accounts Payable Specialist - Part-Time
Accounting Assistant - Full-Time

Contact Nathan Anderson at Nanderson@LHSAGM.org or (414) 296-5961

CURRENT NEWS CONTINUED. . .

HEY JUNIORS!

COLLEGE POSSIBLE IS RECRUITING
STUDENTS AT YOUR SCHOOL



IF YOU ARE...

- + A junior (graduating in 2022)
- + Have a cumulative GPA of 2.0+
- + Interested in pursuing a Bachelor's Degree

We offer support on:

- College exploration
- ACT registration and preparation
- College applications
- Financial aid & more!

...APPLY FOR COLLEGE POSSIBLE TODAY!

Go to CollegePossible.org/Join and complete the online application.
Questions? Email AMiner@CollegePossible.org

WEEKLY LUNCH MENU



MONDAY, Jan. 11 – No Lunch, Virtual Instruction
TUESDAY, Jan. 12 – Chicken Patty, Hash Brown
WEDNESDAY, Jan. 13 – Popcorn Chicken, Mashed Potato Bowl
THURSDAY, Jan. 14 – Chicken Patty, Hash Brown
FRIDAY, Jan. 15 – Popcorn Chicken, Mashed Potato Bowl
MONDAY, Jan. 18 – No Lunch, Virtual Instruction
TUESDAY, Jan. 19 – Cheeseburger, Hash Brown
WEDNESDAY, Jan. 20 – BBQ Rib Sandwich, Potatoes or Casserole
THURSDAY, Jan. 21 – Cheeseburger, Hash Brown
FRIDAY, Jan. 22 – BBQ Rib Sandwich, Potatoes or Casserole

PARKING LOT SAFETY: For the safety of all our students and parents, please find below a few reminders about dropping off/picking up your student(s) in the morning and after school.

1. When picking up after school, please **DO NOT** park between the orange cones. This area is designated for the buses.
2. When dropping off in the morning, you may pull up next to the canopy or next to the parking lot. Please **DO NOT** stop in the middle of the driveway – this causes congestion.
3. Please **DRIVE SLOWLY** at all times and watch for pedestrians crossing.

"THANK YOU FOR BEING A COURTEOUS AND SAFE DRIVER"



The diagram illustrates a school zone layout. At the top is a shaded rectangular area labeled 'CANOPY'. Below it is a horizontal dashed line with the text 'NO PARKING BETWEEN CONES (AFTER SCHOOL ONLY)' centered between two triangle symbols. Below this is another horizontal dashed line with the text 'DRIVEWAY-----NO STOPPING' centered between two dashed lines. Below that is a horizontal solid line with the text 'DROP OFF/PICKUP' centered. At the bottom is a large shaded triangular area labeled 'PARKING LOT', with its hypotenuse sloping downwards from left to right.

CANOPY

△ NO PARKING BETWEEN CONES (AFTER SCHOOL ONLY) △

DRIVEWAY-----NO STOPPING

DROP OFF/PICKUP

PARKING
LOT