

# Cut costs 4 ways with eNow.



## HARD COSTS

Benefits	eNow solar systems...	How?
<b>1</b> Reduce liftgate (LG) battery replacements	Extend battery life 2-3 years	eNow continually monitors batteries and tops off with optimal charge.
<b>2</b> Reduce LG downtime and repairs	Reduce damage to LG electrical parts	eNow eliminates strain on LG electrical components due to weak batteries.

## SOFT COSTS



Benefits	eNow solar systems...	How?
<b>3</b> More satisfied customers and drivers	Reduce breakdowns and delivery delays due to dead batteries	<ul style="list-style-type: none"> <li>eNow charges batteries all day – without any engines running...</li> <li>Even on cloudy days.</li> </ul>
<b>4</b> More productivity	More LG cycles per day	

## RAPID PAYBACK

- Costs less than 2-3 road calls
- Saves on battery replacements
- Saves fuel – no idling to charge batteries
- Reduces late delivery penalties

	APPLICATION		
	Light-Duty or Irregular Use	Average Use	Heavy-Duty Use
	100W	260W	310W
Suggested List Prices	\$959.	\$2,659.	\$2,898.
Typical Operating Cost Saving	\$1,000 per year	\$2,084 per year	\$3,015 per year
Simple Payback (based on List Prices)	0.96 years	1.22 years	0.92 years
Payback w/30% Fed. Tax Credit*	0.67 years	0.85 years	0.64 years

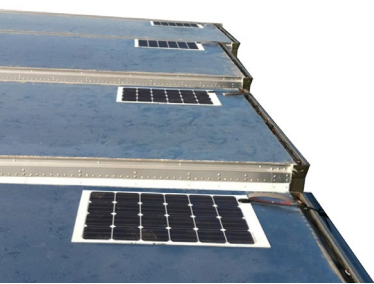
Note: product specifications are subject to change without notice.



eliminating dead batteries™

[enowenergy.com](http://enowenergy.com)

© 2020 eNow, Inc.



# System Selection Guide\*

Liftgate Activity	eNow Solar System		
	100W	260W	310W
<b>Light-duty / Irregular use:</b> Ideal for battery maintenance; used 2-5 days per week, often parked in distribution center or used as overflow trailer	<b>GOOD</b>	<b>BEST</b>	
<b>Average-use:</b> Used 5 days a week with moderate size loads		<b>GOOD</b>	<b>BEST</b>
<b>Heavy-duty use:</b> For liftgates with high activity and heavy loads; trailers with two liftgates			<b>BEST</b>

\*This is a general guide only. Factors such as geographic location (average solar potential), liftgate capacity/model, and average number of lift operations per day are key to proper size selection. [Click](#) for "10 Questions for Precise Size Selection"



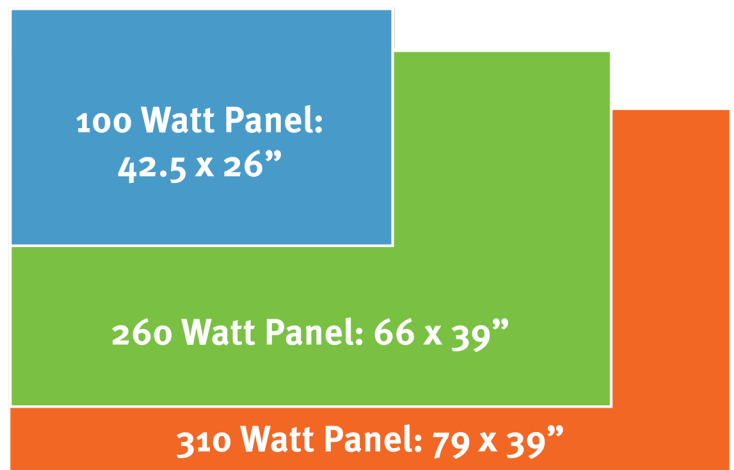
[Click for Installation Guide](#)



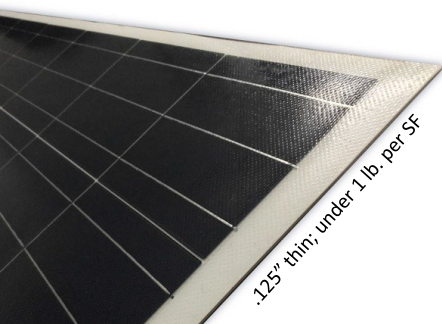
[Click for Spec Sheets](#)

## eNow 100 / 260 / 310 watt systems

- Flexible, low-profile, ETFE-encapsulated panels
- 1/8" thin; weight < 1 lb. per sq.ft.
- Salt and corrosion resistant
- Unaffected by truck wash and snow
- Survives scratches and the elements
- Smart MPPT controller
- Produces power in the shade
- Compatible with all battery types
- Maintenance free
- 5-Year warranty, parts and labor



Note: product specifications are subject to change without notice.



**eNow**  
eliminating dead batteries™

[enowenergy.com](http://enowenergy.com)

© 2020 eNow, Inc.

