



BauscherHepp



VENTA



“We have invested all of our energy into making our furniture as functional as possible, but with such elegant designs that this is not immediately obvious.”

Karl Büchin, General Manager Büchin Design, Berlin

Büchin Design develops, builds and sells individual furniture for the hotel industry and events catering business under the brand name „VENTA by Büchin Design“.

The high-quality buffet furniture includes exclusive cocktail tables and stylish buffet tables as well as matching modern stools. Most VENTA furnishings can be folded up or stacked together to save space, and can be assembled and disassembled in just a few easy steps, without the need for any tools.

All of our buffet furniture is mobile and can be used anywhere. It meets the high demands of the hotel, events and catering industry in every respect.

Our VENTA products have an exclusive design and are available worldwide.

Most of our VENTA products are manufactured in Germany, and we are pleased to appear with the “Made in Germany” seal at trade fairs both in Germany and abroad.



Lookbook Impressions



page 4

Buffet Tables on wheels



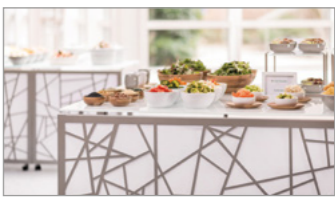
page 20

System with two table tops



page 36

Buffet Accessories



page 44

Hot Buffet



page 68

Cold Buffet



page 76

Service Furniture



page 86

Cocktail Area



page 102

Foldable Buffet Tables



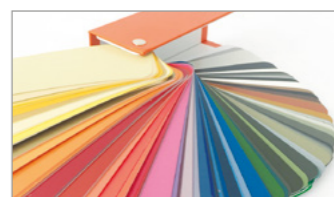
page 114

Additional Equipment



page 124

Material+Color



page 128

References America + Worldwide



page 136













table-top: compact panel
decor: Dark Grey Chicago Concrete (415)



Buffet Tables on wheels

STAGE_80 | STAGE_50



Item No.: VE-81001100402
L: 77.2" x 31.5" x 36.8"
M: 70.9" x 31.5" x 33.7"
2 x XS: 31.5" x 31.5" x 30.5"
total weight: 264.1 lb

STAGE - the modular buffet system

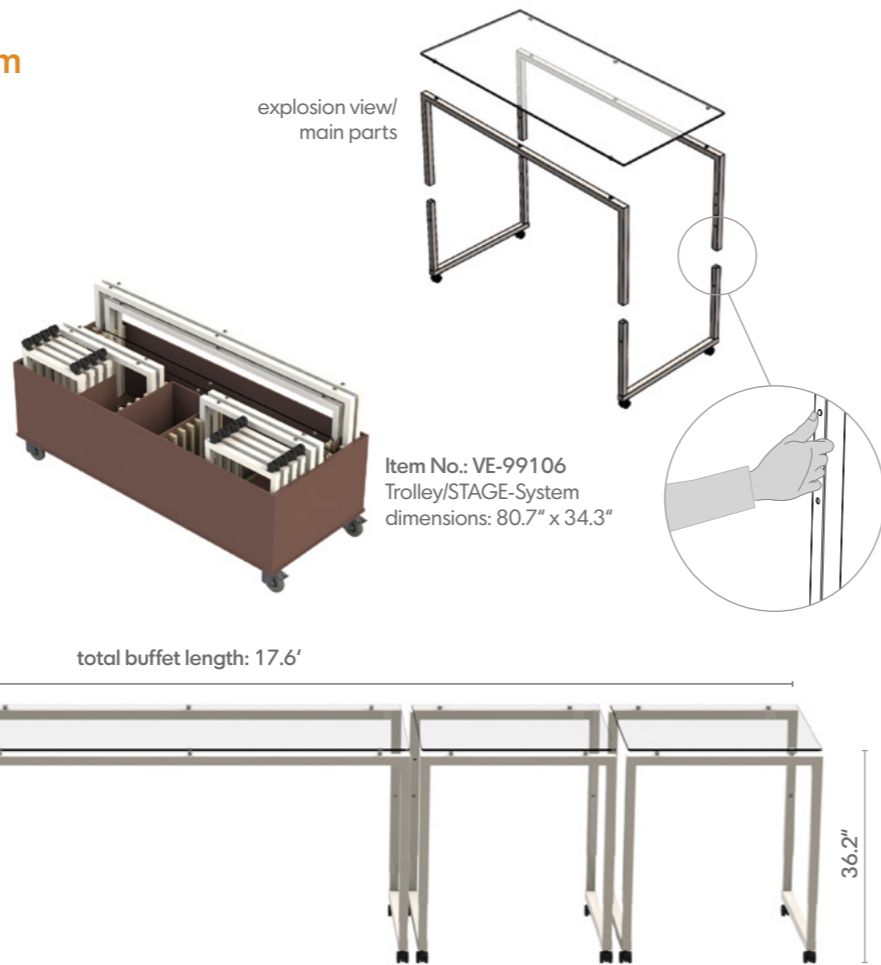
modern look & easy to move
simple, functional, good-looking.

The modular buffet table system STAGE_80 can be assembled and disassembled in just a few easy steps, without the need for any tools.

The trolley system allows you to store all four tables in a mobile wooden box on wheels.

Code map:
VE-XXXXXXXX
For Autoquotes, enter first 5 digits

item # base color top color



all tables in a row/adjusted at the same height

Features

SYSTEM SIZE – Table system available in three standard lengths (L=77.2" , M=70.9" , 2 x XS=31.5")

NESTING - the three standard sizes can be pushed together, so that only 6.4' of the 17.6' buffet table length is required as NESTING system.

COMBINE – system available in two table depths, 31.5" = classic buffet size/19.7" = table depth for smaller meeting rooms. Combinations of the two table depths result in interesting buffet variants or e.g. a MOBILE BAR.

ADAPTIVE - each table can be optimised for the respective area of use with additional equipment (e.g. shelves below the table surface for use as a plate shelf).

CHANGEABLE – a light, elegant buffet system consisting only a metal frame for the table legs and a transparent glass top. Or a buffet system with full equipment including appliances for heating and cooling, thermal bridges, shelves and blinds - STAGE can do both.

FUNCTIONAL – wheel diameter in three sizes suitable for the application: small = in the room or on the floor/medium = in the whole hotel, also suitable for lifts or smaller thresholds/large = inhouse and outdoor, also usable on the terrace.

ADJUSTABLE HEIGHT – four table heights can be adjusted at each table in a grid of 3.1" , thus enabling an interesting and varied furniture construction.

MOBIL - buffet table on wheels, which can be moved in any room and throughout the hotel, all wheels are lockable to fix the table in place.

STORAGE – if required, the system can be dismantled without tools and stowed in trolleys (wooden boxes on wheels), each part has a fixed place due to a grid system and cannot be damaged during transport.

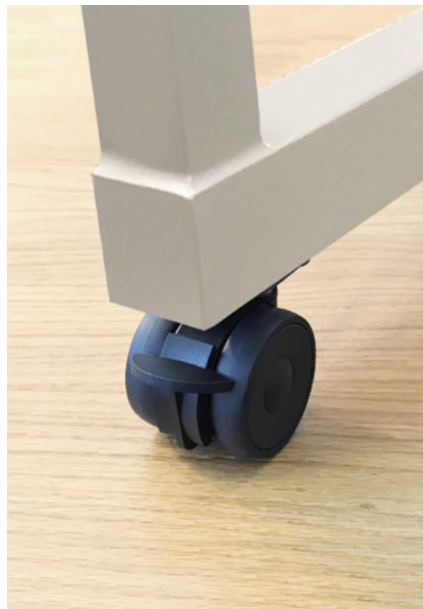
COLOR – elegant lacquering of the table frames and the table tops (underside of the glass tops), so the matching color to the room concept is selectable.

DECOR – table tops available in „compact top“ material with various decorative surfaces (photo reproduction: wood, stone, metal).

BLINDS – various decor panels to choose from, variants from completely closed to translucent, can be quickly assembled and disassembled by magnet attachment, enables „invisible supply“.

Three castor sizes for STAGE buffet-tables – generally recommended for indoor use.

Ø = 2.0" /standard size suitable for using on all grounds, but at the same level.



Ø = 2.6" /suitable for using an elevator (to cross the gap), for longer distance and high pile carpet.



Ø = 3.0" /suitable for using anywhere, especially for catering purposes.

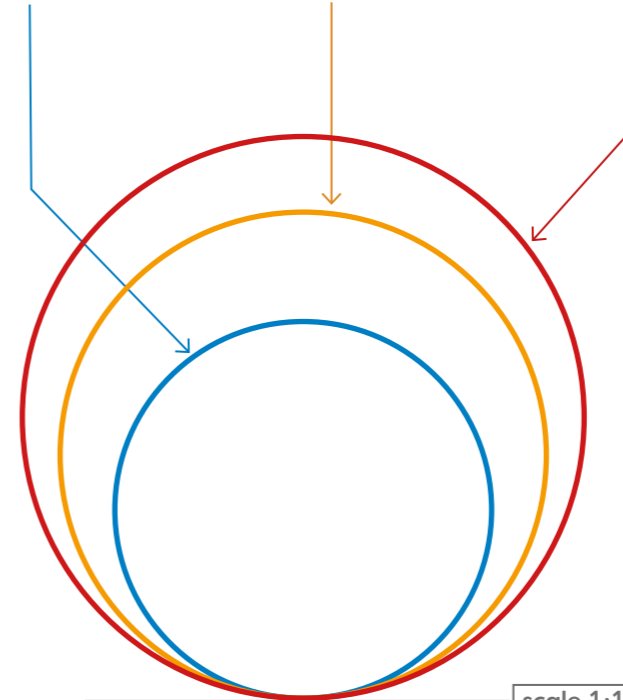


Castor sizes – influence the height of the tables | all sizes useable for buffet purpose

table height: 36.2"
Ø = 2.0"

table height: 36.8"
Ø = 2.6"

table height: 37.2"
Ø = 3.0"



standard size / Ø = 2.6"



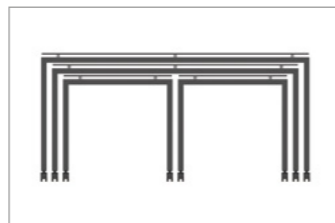
STAGE_80 | set of 4 tables

Item No.: VE-81001100402
 L: 77.2" x 31.5" x 36.8"
 M: 70.9" x 31.5" x 33.7"
 2 x XS: 31.5" x 31.5" x 30.5"
 total weight: 264.1 lb

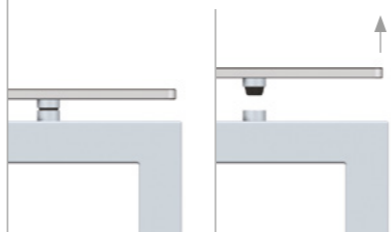
Base (inkl. castors)
 steel, powder-coated anthracite (100)
 profile 1.6" x 1.6" with height
 compensation
 weight: 40.3 lb, 38.1 lb, 2 x 29.3 lb

Table-top
 compact laminate 0.4"
 ceramic anthracite (402)
 weight: 46.3 lb, 41.9 lb, 2 x 19.4 lb

Height adjustable-system
 L: 36.8", 40.0", 43.1", 46.3"
 M: 33.7", 36.8", 40.0", 43.1"
 XS: 30.5", 33.7", 36.8", 40.0"



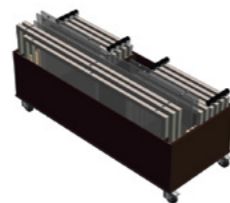
connection between table-top and base



arrangement of the four buffet tables



Item No.: VE-99106
 Trolley for 1 x STAGE_80 (set of 4 tables)



weight: 165.3 lb [empty] / 429.5 lb [full]

height can
 be adjusted
 (30.5"-46.3")



MATERIAL+COLOR

basic
 base: 100, 101
 table-top: 300, 401, 402

option
 base: 102, 103, 104 | more options see page 130
 table-top: 303, 412 | more options see page 131, 132

table on wheels →

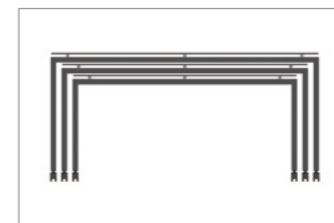
STAGE_80 | set of 3 tables

Item No.: VE-81094100402
 L: 77.2" x 31.5" x 36.8"
 M: 70.9" x 31.5" x 33.7"
 S_164: 63.0" x 31.5" x 30.5"
 total weight: 342.4 lb

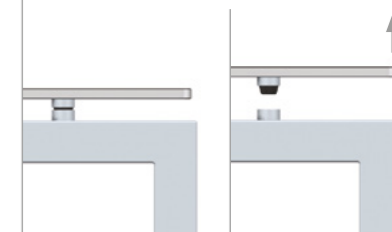
Base
 steel, powder-coated anthracite
 profile 1.6" x 1.6" with height
 compensation
 weight: 40.3 lb, 38.1 lb, 34.6 lb

Table-top
 safety glass 0.4",
 weight: 83.8 lb, 77.2 lb, 68.3 lb

Height adjustable-system
 L: 36.8", 40.0", 43.1", 46.3"
 M: 33.7", 36.8", 40.0", 43.1"
 S_164: 30.5", 33.7", 36.8", 40.0"



connection between table-top and base



height can
 be adjusted
 (30.5"-46.3")



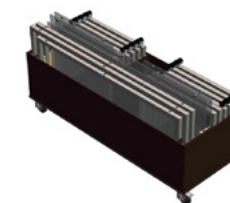
MATERIAL+COLOR

basic
 base: 100, 101
 table-top: 300, 401, 402

option
 base: 102, 103, 104 | more options see page 130
 table-top: 303, 412 | more options see page 131, 132



Item No.: VE-99106
 Trolley for 1 x STAGE_80 (set of 3 tables)



weight: 165.3 lb [empty] / 507.7 lb [full]

STAGE_80_L

Item No.: VE-81002100402
[LxWxH]: 77.2" x 31.5" x 36.8"
total weight: 86.6 lb

Base
2 x main frame (VE-15800) 25.6 lb
2 x table leg (VE-15805) 13.7 lb
steel, powder-coated anthracite (100)
profile 1.6" x 1.6" with height
compensation

4 x Castor (item-no.: VE-11716)
diameter = 2.6"
weight: 1.1 lb

Height adjustable:
36.8" (lowest height)
40.0", 43.1", 46.3"

Table-top (VE-14015)
compact laminate 0.4"
ceramic anthracite (402)
weight: 46.3 lb

Alternative:

Table-top (VE-13003)
safety glass 0.4"
transparent (300),
white colored (303)
weight: 83.8 lb

height can
be adjusted
(36.8"-46.3")

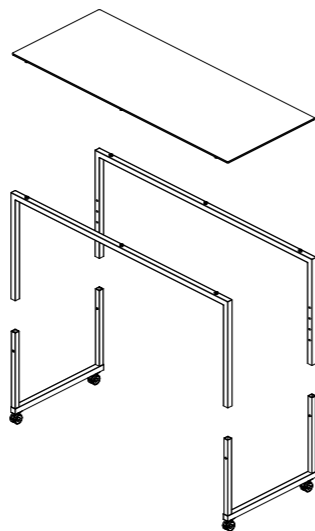


MATERIAL+COLOR

basic
base: 100, 101
table-top: 300, 401, 402

option
base: 102, 103, 104 | more options see page 130
table-top: 303, 412 | more options see page 131, 132

Assembly of individual parts without tools



Item No.: VE-99107
Trolley for 4 x STAGE_80_L (maximum load)



weight: 165.3 lb [empty] / 511.9 lb [full]

STAGE_80_M

Item No.: VE-81003100402
[LxWxH]: 70.9" x 31.5" x 33.7"
total weight: 78.9 lb

Base
2 x main frame (VE-15801) 23.4 lb
2 x table leg (VE-15805) 13.7 lb
steel, powder-coated anthracite (100)
profile 1.6" x 1.6" with height
compensation

4 x Castor (item-no.: VE-11716)
diameter = 2.6"
weight: 1.1 lb

Height adjustable:
33.7" (lowest height)
36.8", 40.0", 43.1"

Table-top (VE-14016)
compact laminate 0.4"
ceramic anthracite (402)
weight: 41.9 lb

Alternative:

Table-top (VE-13004)
safety glass 0.4"
transparent (300),
white colored (303)
weight: 77.2 lb

height can
be adjusted
(33.7"-43.1")

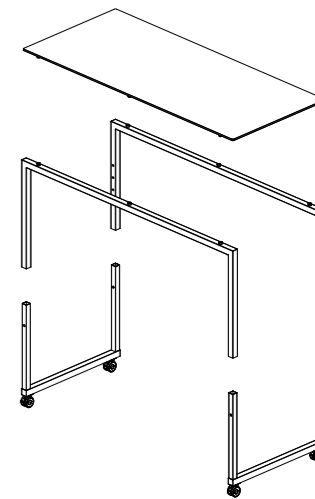


MATERIAL+COLOR

basic
base: 100, 101
table-top: 300, 401, 402

option
base: 102, 103, 104 | more options see page 130
table-top: 303, 412 | more options see page 131, 132

Assembly of individual parts without tools



Item No.: VE-99109
Trolley for 4 x STAGE_80_M (maximum load)



weight: 165.3 lb [empty] / 481.0 lb [full]

STAGE_80_S_164

Item No.: VE-81056100402
[LxWxH]: 64.6" x 31.5" x 30.5"
total weight: 86.6 lb

Base
2 x main frame (VE-15800) 25.6 lb
2 x table leg (VE-15805) 13.7 lb
steel, powder-coated anthracite (100)
profile 1.6" x 1.6" with height
compensation

4 x Castor (item-no.: VE-11716)
diameter = 2.6"
weight: 1.1 lb

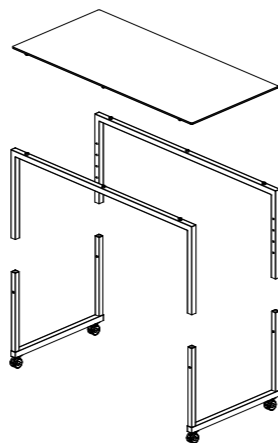
Height adjustable:
29.7" (lowest height)
33.7", 36.8", 40.0"

Table-top (VE-14015)
compact laminate 0.4"
ceramic anthracite (402)
weight: 46.3 lb

Alternative:

Table-top (VE-13003)
safety glass 0.4"
transparent (300),
white colored (303)
weight: 83.8 lb

Assembly of individual parts without tools



height can
be adjusted
(30.5"-40.0")

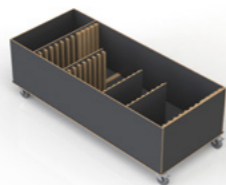


MATERIAL+COLOR

basic
base: 100, 101
table-top: 300, 401, 402

option
base: 102, 103, 104 | more options see page 130
table-top: 303, 412 | more options see page 131, 132

Item No.: VE-99123
Trolley for 4 x STAGE_80_S_164 (maximum load)



weight: 158.7 lb [empty] / 505.3 lb [full]

STAGE_80_XS

Item No.: VE-81004100402
[LxWxH]: 31.5" x 31.5" x 30.5"
total weight: 78.9 lb

Base
2 x main frame (VE-15801) 23.4 lb
2 x table leg (VE-15805) 13.7 lb
steel, powder-coated anthracite (100)
profile 1.6" x 1.6" with height
compensation

4 x Castor (item-no.: VE-11716)
diameter = 2.6"
weight: 1.1 lb

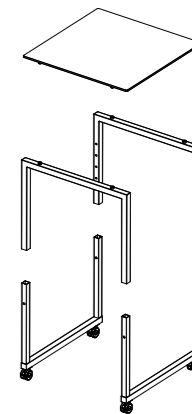
Height adjustable:
30.5" (lowest height)
33.7", 36.8", 40.0"

Table-top (VE-14016)
compact laminate 0.4"
ceramic anthracite (402)
weight: 41.9 lb

Alternative:

Table-top (VE-13004)
safety glass 0.4"
transparent (300),
white colored (303)
weight: 77.2 lb

Assembly of individual parts without tools



height can
be adjusted
(30.5"-40.0")

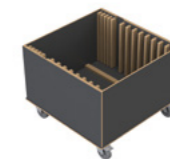


MATERIAL+COLOR

basic
base: 100, 101
table-top: 300, 401, 402

option
base: 102, 103, 104 | more options see page 130
table-top: 303, 412 | more options see page 131, 132

Item No.: VE-99114
Trolley for 4 x STAGE_80_XS (maximum load)



weight: 105.8 lb [empty] / 421.5 lb [full]

STAGE_50_L

Item No.: VE-51002100402
[LxWxH]: 77.2" x 19.7" x 36.8"
total weight: 70.8 lb

Base
2 x main frame (VE-15800) 25.6 lb
2 x table leg (VE-15806) 11.0 lb
steel, powder-coated anthracite (100)
profile 1.6" x 1.6" with height
compensation

4 x Castor (item-no.: VE-11716)
diameter = 2.6"
weight: 1.1 lb

Height adjustable:
36.8" (lowest height)
40.0", 43.1", 46.3"

Table-top (VE-14020)
compact laminate 0.4"
ceramic anthracite (402)
weight: 33.1 lb

Alternative:

Table-top (VE-13026)
safety glass 0.4"
transparent (300),
white colored (303)
weight: 52.9 lb

height can
be adjusted
(36.8"-46.3")

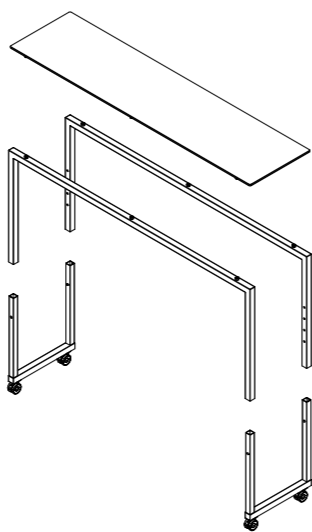


MATERIAL+COLOR

basic
base: 100, 101
table-top: 300, 401, 402

option
base: 102, 103, 104 | more options see page 130
table-top: 303, 412 | more options see page 131, 132

Assembly of individual parts without tools



Item No.: VE-99109
Trolley for 4 x STAGE_50_L (maximum load)



weight: 165.3 lb [empty] / 448.4 lb [full]

STAGE_50_M

Item No.: VE-51003100402
[LxWxH]: 70.9" x 19.7" x 33.7"
total weight: 64.2 lb

Base
2 x main frame (VE-15801) 23.4 lb
2 x table leg (VE-15806) 11.0 lb
steel, powder-coated anthracite (100)
profile 1.6" x 1.6" with height
compensation

4 x Castor (item-no.: VE-11716)
diameter = 2.6"
weight: 1.1 lb

Height adjustable:
33.7" (lowest height)
36.8", 40.0", 43.1"

Table-top (VE-14021)
compact laminate 0.4"
ceramic anthracite (402)
weight: 28.7 lb

Alternative:

Table-top (VE-13027)
safety glass 0.4"
transparent (300),
white colored (303)
weight: 48.5 lb

height can
be adjusted
(33.7"-43.1")

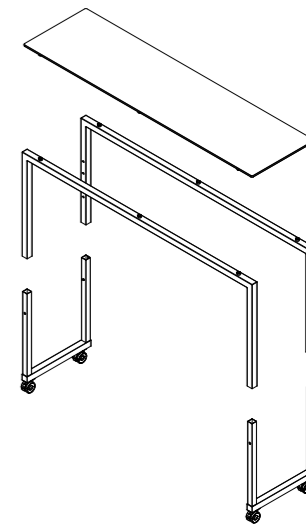


MATERIAL+COLOR

basic
base: 100, 101
table-top: 300, 401, 402

option
base: 102, 103, 104 | more options see page 130
table-top: 303, 412 | more options see page 131, 132

Assembly of individual parts without tools



Item No.: VE-99109
Trolley for 4 x STAGE_80_M (maximum load)



weight: 165.3 lb [empty] / 422.0 lb [full]

STAGE_50_S_164

Item No.: VE-51017100402
[LxWxH]: 64.6" x 19.7" x 30.5"
total weight: 58.4 lb

Base
2 x main frame (VE-15803) 19.8 lb
2 x table leg (VE-15806) 11.0 lb
steel, powder-coated anthracite (100)
profile 1.6" x 1.6" with height
compensation

4 x Castor (item-no.: VE-11716)
diameter = 2.6"
weight: 1.1 lb

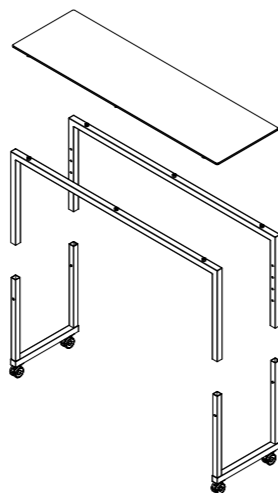
Height adjustable:
30.5" (lowest height)
33.7", 36.8", 40.0"

Table-top (VE-14017)
compact laminate 0.4"
ceramic anthracite (402)
weight: 26.5 lb

Alternative:

Table-top (VE-13005)
safety glass 0.4"
transparent (300),
white colored (303)
weight: 68.3 lb

Assembly of individual parts without tools



height can
be adjusted
(36.8"-46.3")

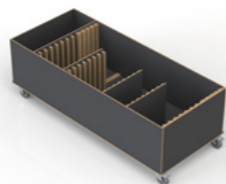


MATERIAL+COLOR

basic
base: 100, 101
table-top: 300, 401, 402

option
base: 102, 103, 104 | more options see page 130
table-top: 303, 412 | more options see page 131, 132

Item No.: VE-99123
Trolley for 4 x STAGE_50_S_164 (maximum load)



weight: 158.7 lb [empty] / 392.4 lb [full]

STAGE_50_XS

Item No.: VE-51004100402
[LxWxH]: 31.5" x 19.7" x 30.5"
total weight: 46.1 lb

Base
2 x main frame (VE-15804) 14.6 lb
2 x table leg (VE-15806) 11.0 lb
steel, powder-coated anthracite (100)
profile 1.6" x 1.6" with height
compensation

4 x Castor (item-no.: VE-11716)
diameter = 2.6"
weight: 1.1 lb

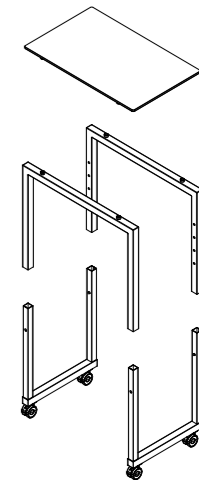
Height adjustable:
30.5" (lowest height)
33.7", 36.8", 40.0"

Table-top (VE-14018)
compact laminate 0.4"
ceramic anthracite (402)
weight: 19.4 lb

Alternative:

Table-top (VE-13006)
safety glass 0.4"
transparent (300),
white colored (303)
weight: 33.1 lb

Assembly of individual parts without tools



height can
be adjusted
(33.7"-43.1")

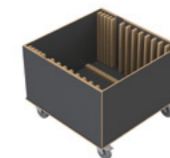


MATERIAL+COLOR

basic
base: 100, 101
table-top: 300, 401, 402

option
base: 102, 103, 104 | more options see page 130
table-top: 303, 412 | more options see page 131, 132

Item No.: VE-99114
Trolley for 4 x STAGE_50_XS (maximum load)



weight: 105.8 lb [empty] / 290.1 lb [full]

System with two table tops

STAGE_S table | single devices



STAGE_80_S | system with two separate table-tops

Item No.: VE-81039100
[LxWxH]: 63.0" x 31.5" x 30.5"
total weight: 33.5 lb

Base
2 x main frame (VE-15803) 19.8 lb
2 x table leg (VE-15805) 13.7 lb
steel, powder-coated anthracite (100)
profile 1.6" x 1.6" with height compensation

4 x Castor (item-no.: VE-11716)
diameter = 2.6"
weight: 1.1 lb

Height adjustable:
30.5" (lowest height)
33.7", 36.8", 40.0"

Table-top (VE-14018)
compact laminate 0.4"
ceramic anthracite (402)
weight: 19.4 lb

Alternative:

Table-top (VE-13006)
safety glass 0.4"
transparent (300),
white colored (303)
weight: 33.1 lb

height can
be adjusted
(30.5"-40.0")

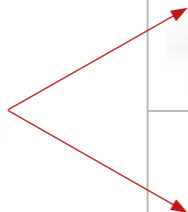


MATERIAL+COLOR

basic
base: 100, 101
table-top: 300, 401, 402

option
base: 102, 103, 104 | more options see page 130
table-top: 303, 412 | more options see page 131, 132

**order separately:
base and table-top**



base_STAGE_80_S / Item No.: VE-81039100



table-top XS / Item No.: VE-14018402



explosion view



STAGE_80_S | available table-top-units

Item No.: VE-13006300
table-top / glass, transparent (300)



Item No.: VE-11010100307
metal bowl / steel, anthracite (100)
table-top / glass, black colored (307)



> more details see page 80

Item No.: VE-11084100402
metal housing / steel, anthracite (100)
table-top / compact panel, ceramic anthracite (402)



> more details see page 84

Item No.: VE-11057402
table-top / compact panel, ceramic anthracite (402)



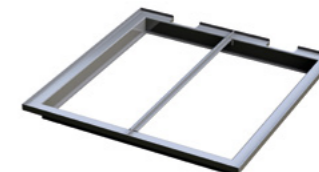
> more details see page 73

Item No.: VE-11054402
table-top / compact panel, ceramic anthracite (402)



> more details see page 71

Item No.: VE-20007199
metal frame / stainless steel (199)



STAGE_80_S | MOBILE BAR with ICE WELL | VERSION 1

Item No.: VE-86005100402402



- 1 x base_STAGE_80_S / VE-81039100
- 1 x table-top_XS / VE-14018402
- 1 x table-top-unit_ICE_WELL / VE-11084100402



- 1 x FRONTBLIND_STAGE_S / VE-38046100402
- 2 x SIDEBLIND_STAGE_80 / VE-38048100402



- 1 x STAGE_50_M / VE-51003100402



optional equipment:
container 1/1 GN perforated / VE-12309

STAGE_80_S | MOBILE BAR with ICE WELL | VERSION 2

Item No.: VE-86006100402402



- 1 x base_STAGE_80_S / Item No.: VE-81039100
- 1 x table-top_XS / VE-14018402
- 1 x table-frame_ELEMENTS / VE-20007199



- 1 x VE-20012402
- 1 x VE-20019402
- 1 x VE-20027

- 1 x FRONTBLIND_STAGE_S / VE-38046100402
- 2 x SIDEBLIND_STAGE_80 / VE-38048100402



- 1 x STAGE_50_M / VE-51003100402



optional equipment:
container 1/1 GN perforated / VE-12309

STAGE_80_S | MOBILE BAR with ICE WELL | VERSION 3

Item No.: VE-86007100402402



1 x base_STAGE_80_S / Item No.: VE-81039100
 1 x table-top_XS / VE-14018402
 1 x table-frame_ELEMENTS / VE-20007199

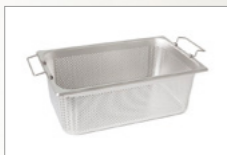


2 x VE-20012402
 2 x VE-20019402
 2 x VE-20027

1 x FRONTBLIND_STAGE_S / VE-38046100402
 2 x SIDEBLIND_STAGE_80 / VE-38048100402



1 x STAGE_50_M / VE-51003100402



optional equipment:
 container 1/1 GN perforated / VE-12309

STAGE_80_S | MOBILE BAR with ICE WELL | VERSION 4

Item No.: VE-86008100402402



1 x base_STAGE_80_S / Item No.: VE-81039100
 2 x table-frame_ELEMENTS / VE-20007199



2 x VE-20012402
 2 x VE-20019402
 2 x VE-20027

1 x FRONTBLIND_STAGE_S / VE-38046100402
 2 x SIDEBLIND_STAGE_80 / VE-38048100402



1 x STAGE_50_M / VE-51003100402



optional equipment:
 container 1/1 GN perforated / VE-12309

Buffet Accessories

Blind | Shelf | Table Riser



FRONTBLIND_STAGE_BAMBOO_COVERED

FRONTBLIND_STAGE_L_BAMBOO
Item No.: VE-38036100622
[LxWxH]: 77.2" x 32.4" x 0.7"
weight: 30.9 lb

FRONTBLIND_STAGE_S_164_BAMBOO
Item No.: VE-38038100622
[LxWxH]: 64.6" x 32.4" x 0.7"
weight: 19.8 lb

FRONTBLIND_STAGE_XS_BAMBOO
Item No.: VE-38040100622
[LxWxH]: 31.5" x 32.4" x 0.7"
weight: 14.3 lb

FRONTBLIND_STAGE_M_BAMBOO
Item No.: VE-38037100622
[LxWxH]: 70.9" x 32.4" x 0.7"
weight: 28.7 lb

FRONTBLIND_STAGE_S_BAMBOO
Item No.: VE-38039100622
[LxWxH]: 63.0" x 32.4" x 0.7"
weight: 17.6 lb

suitable for all STAGE tables
buffet height = 36.8"

FRONTBLINDS/available in five
sizes/suitable for L, M, S_164, S and
XS length



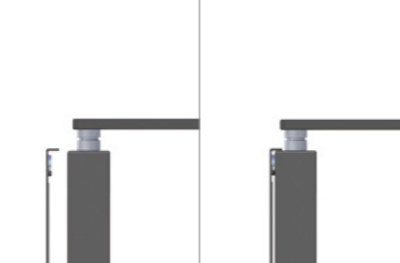
MATERIAL+COLOR

basic
base: 100, 101
cover: 620, 621, 622

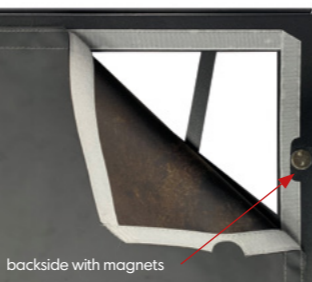
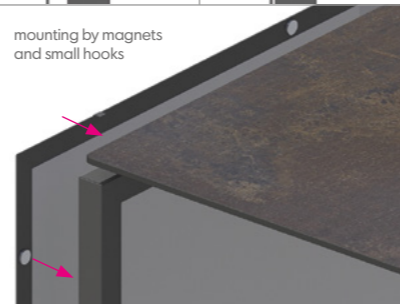
option
base: 102, 103, 104 | more options see page 130
cover: no more options

side view 1

side view 2



mounting by magnets
and small hooks



backside with magnets

SIDEBLIND_STAGE_BAMBOO_COVERED

SIDEBLIND_STAGE_80_BAMBOO
Item No.: VE-38041100622
[LxWxH]: 31.5" x 32.4" x 0.7"
weight: 14.3 lb

SIDEBLIND_STAGE_50_BAMBOO
Item No.: VE-38042100622
[LxWxH]: 19.7" x 32.4" x 0.7"
weight: 11.0 lb

suitable for all STAGE tables
buffet height = 36.8"

SIDEBLINDS/available in
two sizes for 31.5" and
19.7" buffet depth



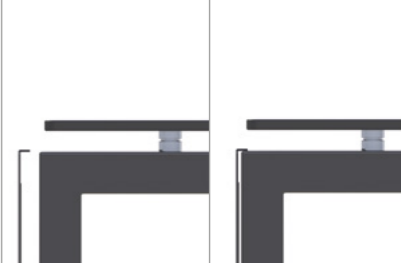
MATERIAL+COLOR

basic
base: 100, 101
cover: 620, 621, 622

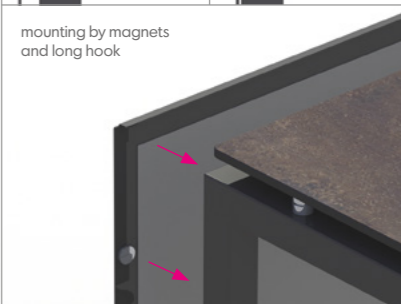
option
base: 102, 103, 104 | more options see page 130
cover: no more options

side view 1

side view 2



mounting by magnets
and long hook



FRONTBLIND_STAGE_LEAF_COVERED

FRONTBLIND_STAGE_L_LEAF
Item No.: VE-38022100622
[LxWxH]: 77.2" x 32.4" x 0.7"
weight: 30.9 lb

FRONTBLIND_STAGE_S_164_LEAF
Item No.: VE-38024100622
[LxWxH]: 64.6" x 32.4" x 0.7"
weight: 19.8 lb

FRONTBLIND_STAGE_XS_LEAF
Item No.: VE-38026100622
[LxWxH]: 31.5" x 32.4" x 0.7"
weight: 14.3 lb

FRONTBLIND_STAGE_M_LEAF
Item No.: VE-38023100622
[LxWxH]: 70.9" x 32.4" x 0.7"
weight: 28.7 lb

FRONTBLIND_STAGE_S_LEAF
Item No.: VE-38025100622
[LxWxH]: 63.0" x 32.4" x 0.7"
weight: 17.6 lb

suitable for all STAGE tables
buffet height = 36.8"

FRONTBLINDS/available in five
sizes/suitable for L, M, S_164, S and
XS length



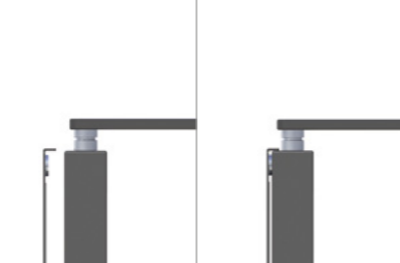
MATERIAL+COLOR

basic
base: 100, 101
cover: 620, 621, 622

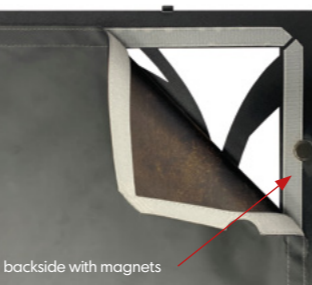
option
base: 102, 103, 104 | more options see page 130
cover: no more options

side view 1

side view 2



mounting by magnets
and small hooks



backside with magnets

SIDEBLIND_STAGE_LEAF_COVERED

SIDEBLIND_STAGE_80_LEAF
Item No.: VE-380427100622
[LxWxH]: 31.5" x 32.4" x 0.7"
weight: 14.3 lb

SIDEBLIND_STAGE_50_LEAF
Item No.: VE-38028100622
[LxWxH]: 19.7" x 32.4" x 0.7"
weight: 11.0 lb

suitable for all STAGE tables
buffet height = 36.8"

SIDEBLINDS/available in
two sizes for 31.5" and
19.7" buffet depth



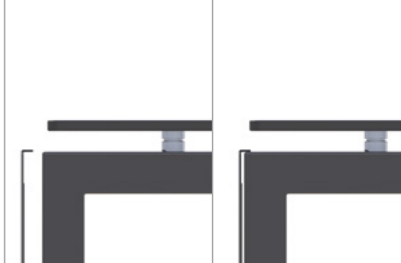
MATERIAL+COLOR

basic
base: 100, 101
cover: 620, 621, 622

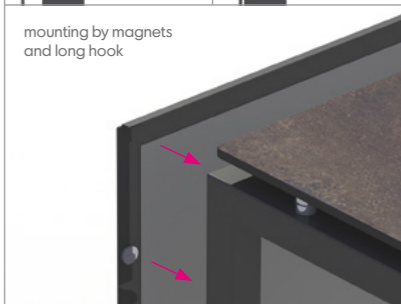
option
base: 102, 103, 104 | more options see page 130
cover: no more options

side view 1

side view 2



mounting by magnets
and long hook



FRONTBLIND_STAGE_STRIPE_COVERED

FRONTBLIND_STAGE_L_STRIPES
 Item No.: VE-38062100622
 [LxWxH]: 77.2" x 32.4" x 0.7"
 weight: 30.9 lb

FRONTBLIND_STAGE_S_164_STRIPES
 Item No.: VE-38064100622
 [LxWxH]: 64.6" x 32.4" x 0.7"
 weight: 26.0 lb

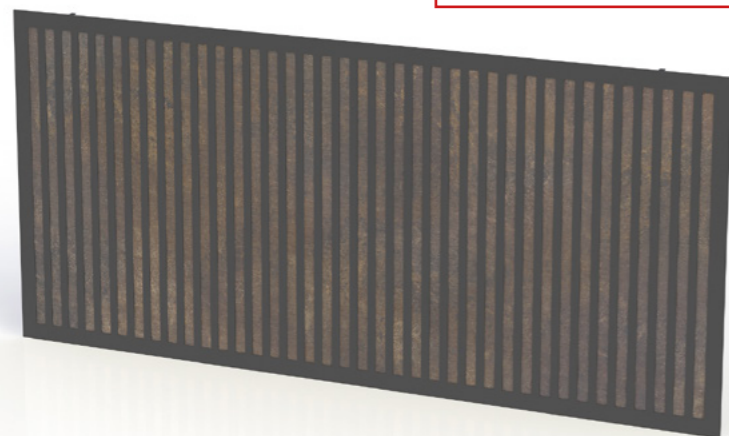
FRONTBLIND_STAGE_XS_STRIPES
 Item No.: VE-38066100622
 [LxWxH]: 31.5" x 32.4" x 0.7"
 weight: 12.8 lb

FRONTBLIND_STAGE_M_STRIPES
 Item No.: VE-38063100622
 [LxWxH]: 70.9" x 32.4" x 0.7"
 weight: 28.7 lb

FRONTBLIND_STAGE_S_STRIPES
 Item No.: VE-38065100622
 [LxWxH]: 63.0" x 32.4" x 0.7"
 weight: 25.1 lb

suitable for all STAGE tables
 buffet height = 36.8"

FRONTBLINDS/available in five
 sizes/suitable for L, M, S_164, S and
 XS length



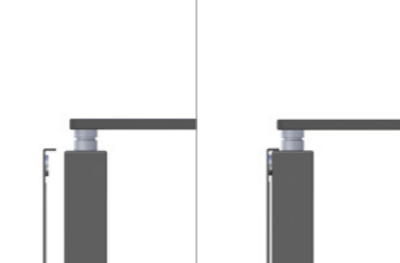
MATERIAL+COLOR

basic
 base: 100, 101
 cover: 620, 621, 622

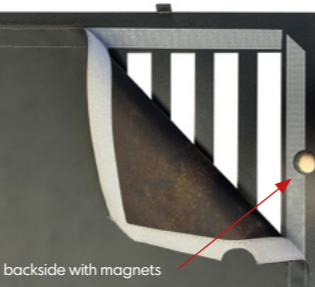
option
 base: 102, 103, 104 | more options see page 130
 cover: no more options

side view 1

side view 2



mounting by magnets
 and small hooks



backside with magnets

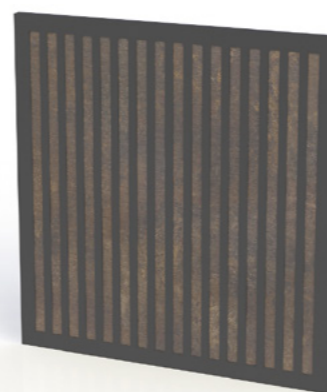
SIDEBLIND_STAGE_STRIPE_COVERED

SIDEBLIND_STAGE_80_STRIPES
 Item No.: VE-38067
 [LxWxH]: 31.5" x 32.4" x 0.7"
 weight: 12.8 lb

SIDEBLIND_STAGE_50_STRIPES
 Item No.: VE-38068100622
 [LxWxH]: 19.7" x 32.4" x 0.7"
 weight: 11.0 lb

suitable for all STAGE tables
 buffet height = 36.8"

SIDEBLINDS/available in
 two sizes for 31.5" and
 19.7" buffet depth



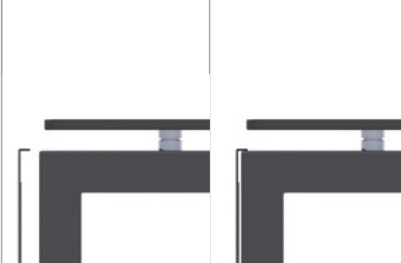
MATERIAL+COLOR

basic
 base: 100, 101
 cover: 620, 621, 622

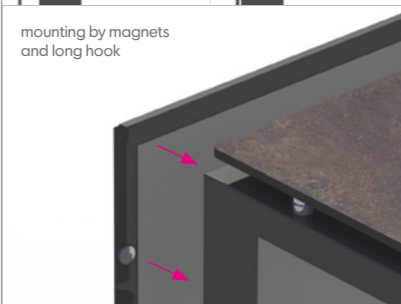
option
 base: 102, 103, 104 | more options see page 130
 cover: no more options

side view 1

side view 2



mounting by magnets
 and long hook



FRONTBLIND_STAGE

FRONTBLIND_STAGE_L
Item No.: VE-38043100402
[LxWxH]: 77.2" x 32.4" x 0.7"
weight: 14.3 lb

FRONTBLIND_STAGE_S_164
Item No.: VE-38045100402
[LxWxH]: 64.6" x 32.4" x 0.7"
weight: 12.1 lb

FRONTBLIND_STAGE_XS
Item No.: VE-38047100402
[LxWxH]: 31.5" x 32.4" x 0.7"
weight: 6.0 lb

FRONTBLIND_STAGE_M
Item No.: VE-38044100402
[LxWxH]: 70.9" x 32.4" x 0.7"
weight: 13.2 lb

FRONTBLIND_STAGE_S
Item No.: VE-38046100402
[LxWxH]: 63.0" x 32.4" x 0.7"
weight: 11.7 lb

suitable for all STAGE tables
buffet height = 36.8"

FRONTBLINDS/available in five
sizes/suitable for L, M, S_164, S and
XS length



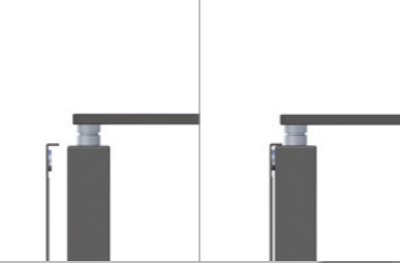
MATERIAL+COLOR

basic
base: 100, 101
cover: 401, 402

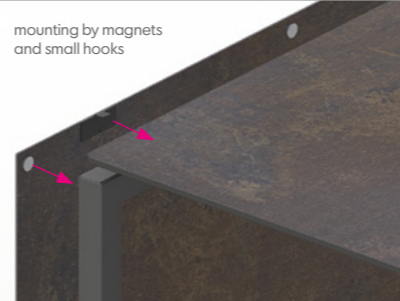
option
base: 102, 103, 104 | more options see page 130
cover: 412, 414, 415 | more options see page 135

side view 1

side view 2



mounting by magnets
and small hooks



small hook (glued on the
compact laminate panel)

SIDEBLIND_STAGE

SIDEBLIND_STAGE_80
Item No.: VE-38048100402
[LxWxH]: 31.5" x 32.4" x 0.7"
weight: 6.0 lb

SIDEBLIND_STAGE_50
Item No.: VE-38049100402
[LxWxH]: 19.7" x 32.4" x 0.7"
weight: 3.7 lb

suitable for all STAGE tables
buffet height = 36.8"

SIDEBLINDS/available in
two sizes for 31.5" and
19.7" buffet depth



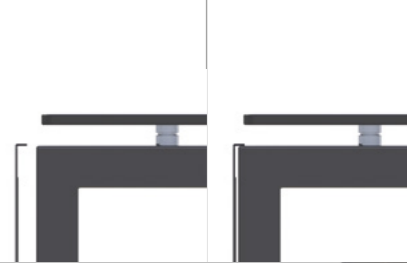
MATERIAL+COLOR

basic
base: 100, 101
cover: 401, 402

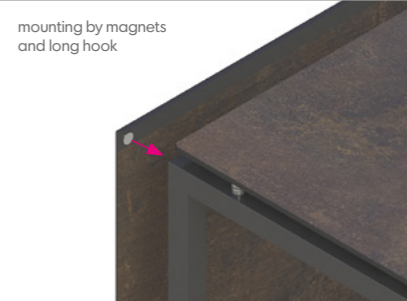
option
base: 102, 103, 104 | more options see page 130
cover: 412 | more options see page 135

side view 1

side view 2



mounting by magnets
and long hook



long hook (glued on the
compact laminate panel)



FRONTBLIND_APERTURE_STAGE

FRONTBLIND_APERTURE_STAGE_L
 Item No.: VE-38057100402
 [LxWxH]: 77.2" x 32.4" x 1.1"
 weight: 14.3 lb

FRONTBLIND_APERTURE_STAGE_M
 Item No.: VE-38058100402
 [LxWxH]: 70.9" x 32.4" x 1.1"
 weight: 13.2 lb

FRONTBLIND_APERTURE_STAGE_S_164
 Item No.: VE-38059100402
 [LxWxH]: 64.6" x 32.4" x 1.1"
 weight: 12.1 lb

FRONTBLIND_APERTURE_STAGE_S
 Item No.: VE-38060100402
 [LxWxH]: 63.0" x 32.4" x 1.1"
 weight: 11.7 lb

FRONTBLIND_APERTURE_STAGE_XS
 Item No.: VE-38061100402
 [LxWxH]: 31.5" x 32.4" x 1.1"
 weight: 6.0 lb

suitable for all STAGE tables
 buffet height = 36.8"

FRONTBLINDS/available in five
 sizes/suitable for L, M, S_164, S and
 XS length



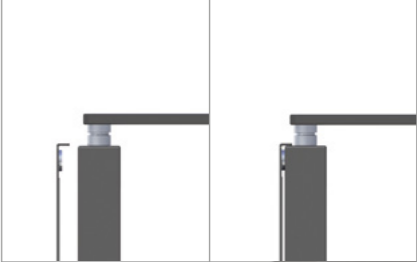
MATERIAL+COLOR

basic
 base: 100, 101
 cover: 401, 402

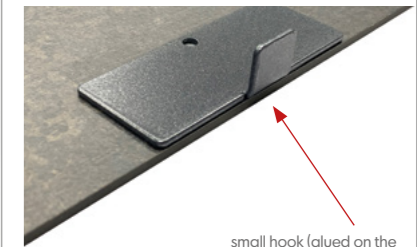
option
 base: 102, 103, 104 | more options see page 130
 cover: 412, 414, 415 | more options see page 135

side view 1

side view 2



mounting by magnets
 and small hooks



small hook (glued on the
 compact laminate panel)

SHELF_47_STAGE_80

SHELF_47_STAGE_80_L
Item No.: VE-80083100402
[LxWxH]: 74.8" x 28.7" x 16.6"
weight: 52.0 lb

SHELF_47_STAGE_80_S_164
Item No.: VE-80085100402
[LxWxH]: 62.2" x 28.7" x 16.6"
weight: 47.0 lb

SHELF_47_STAGE_80_XS
Item No.: VE-80087100402
[LxWxH]: 29.1" x 28.7" x 16.6"
weight: 23.4 lb

SHELF_47_STAGE_80_M
Item No.: VE-80084100402
[LxWxH]: 68.5" x 28.7" x 16.6"
weight: 50.5 lb

SHELF_47_STAGE_80_S
Item No.: VE-80086100402
[LxWxH]: 60.6" x 28.7" x 16.6"
weight: 49.4 lb

3 x U-Bolts (size: L/M/S_164)



4 x U-Bolts (size: S)



2 x U-Bolts (size: XS)



FRONTBLIND APERTURE
requires SHELF_47



MATERIAL+COLOR

basic
base: 100, 101
shelf: 401, 402

option
base: 102, 103, 104 | more options see page 130
shelf: 412, 414, 415 | more options see page 135

depth = 31.5"

SHELF_47_STAGE_50

SHELF_47_STAGE_50_L
Item No.: VE-50044100402
[LxWxH]: 74.8" x 16.9" x 16.6"
weight: 31.3 lb

SHELF_47_STAGE_50_S_164
Item No.: VE-50046100402
[LxWxH]: 62.2" x 16.9" x 16.6"
weight: 29.3 lb

SHELF_47_STAGE_50_XS
Item No.: VE-50048100402
[LxWxH]: 29.1" x 16.9" x 16.6"
weight: 15.2 lb

SHELF_47_STAGE_50_M
Item No.: VE-50045100402
[LxWxH]: 68.5" x 16.9" x 16.6"
weight: 30.6 lb

SHELF_47_STAGE_50_S
Item No.: VE-50047100402
[LxWxH]: 60.6" x 16.9" x 16.6"
weight: 31.7 lb

3 x U-Bolts (size: L/M/S_164)



4 x U-Bolts (size: S)



2 x U-Bolts (size: XS)



FRONTBLIND APERTURE
requires SHELF_47



MATERIAL+COLOR

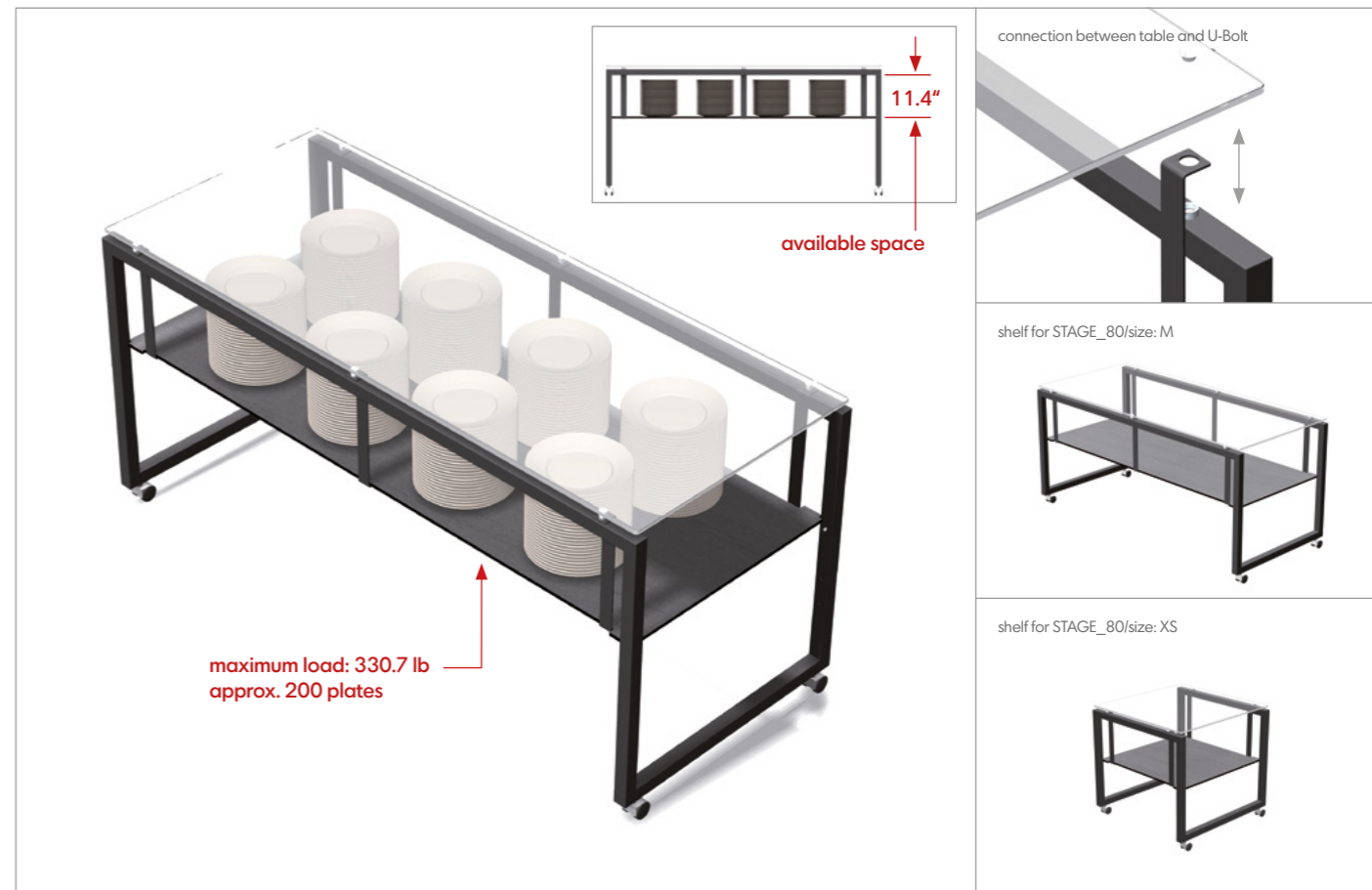
basic
base: 100, 101
shelf: 401, 402

option
base: 102, 103, 104 | more options see page 130
shelf: 412, 414, 415 | more options see page 135

depth = 19.7"



SHELF_STAGE



SHELF_STAGE_80

SHELF_STAGE_80_L
Item No.: VE-80010100402
[LxWxH]: 74.8" x 28.7" x 13.9"
weight: 50.7 lb

SHELF_STAGE_80_S_164
Item No.: VE-80058100402
[LxWxH]: 62.2" x 28.7" x 13.9"
weight: 45.6 lb

SHELF_STAGE_80_XS
Item No.: VE-80012100402
[LxWxH]: 29.1" x 28.7" x 13.9"
weight: 22.5 lb

SHELF_STAGE_80_M
Item No.: VE-80011100402
[LxWxH]: 68.5" x 28.7" x 13.9"
weight: 49.2 lb

SHELF_STAGE_80_S
Item No.: VE-80038100402
[LxWxH]: 60.6" x 28.7" x 13.9"
weight: 47.6 lb



MATERIAL+COLOR

basic
base: 100, 101
shelf: 401, 402

option
base: 102, 103, 104 | more options see page 130
shelf: 412, 414, 415 | more options see page 135

depth = 31.5"

3 x U-Bolts (size: L/M/S_164)



4 x U-Bolts (size: S)



2 x U-Bolts (size: XS)



SHELF_STAGE_50

SHELF_STAGE_50_L
Item No.: VE-50005100402
[LxWxH]: 74.8" x 16.9" x 13.9"
weight: 30.0 lb

SHELF_STAGE_50_S_164
Item No.: VE-50023100402
[LxWxH]: 62.2" x 16.9" x 13.9"
weight: 28.0 lb

SHELF_STAGE_50_XS
Item No.: VE-50007100402
[LxWxH]: 29.1" x 16.9" x 13.9"
weight: 14.3 lb

SHELF_STAGE_50_M
Item No.: VE-50006100402
[LxWxH]: 68.5" x 16.9" x 13.9"
weight: 29.3 lb

SHELF_STAGE_50_S
Item No.: VE-50021100402
[LxWxH]: 60.6" x 16.9" x 13.9"
weight: 30.0 lb



MATERIAL+COLOR

basic
base: 100, 101
shelf: 401, 402

option
base: 102, 103, 104 | more options see page 130
shelf: 412, 414, 415 | more options see page 135

depth = 19.7"

3 x U-Bolts (size: L/M/S_164)



4 x U-Bolts (size: S)



2 x U-Bolts (size: XS)



SHELF_LOW_STAGE_80

SHELF_LOW_STAGE_80_L
Item No.: VE-80068100402
[LxWxH]: 76.8" x 29.1" x 2.0"
weight: 54.9 lb

SHELF_LOW_STAGE_80_S_164
Item No.: VE-80070100402
[LxWxH]: 64.2" x 29.1" x 2.0"
weight: 46.3 lb

SHELF_LOW_STAGE_80_XS
Item No.: VE-80064402
[LxWxH]: 31.1" x 29.1" x 0.4"
weight: 18.3 lb

SHELF_LOW_STAGE_80_M
Item No.: VE-80069100402
[LxWxH]: 70.5" x 29.1" x 2.0"
weight: 50.3 lb

SHELF_LOW_STAGE_80_S
Item No.: VE-80071100402
[LxWxH]: 62.6" x 29.1" x 2.0"
weight: 45.0 lb



MATERIAL+COLOR

basic
base: 100
shelf: 401, 402

option
base: no more options
shelf: 412, 414, 415 | more options see page 135

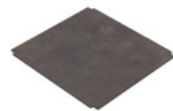
size: L/M/S_164/S
underside always with metal strut (top view)



size: L/M/S_164/S
underside always with metal strut (bottom view)



size: XS
underside always without metal strut (both sides look the same)



SHELF_LOW_STAGE_50

SHELF_LOW_STAGE_50_L
Item No.: VE-50032100402
[LxWxH]: 76.8" x 17.3" x 2.0"
weight: 33.1 lb

SHELF_LOW_STAGE_50_S_164
Item No.: VE-50034100402
[LxWxH]: 64.2" x 17.3" x 2.0"
weight: 24.3 lb

SHELF_LOW_STAGE_50_XS
Item No.: VE-50026402
[LxWxH]: 31.1" x 17.3" x 0.4"
weight: 11.2 lb

SHELF_LOW_STAGE_50_M
Item No.: VE-50033100402
[LxWxH]: 70.5" x 17.3" x 2.0"
weight: 31.1 lb

SHELF_LOW_STAGE_50_S
Item No.: VE-50035100402
[LxWxH]: 62.6" x 17.3" x 2.0"
weight: 22.0 lb



MATERIAL+COLOR

basic
base: 100
shelf: 401, 402

option
base: no more options
shelf: 412, 414, 415 | more options see page 135

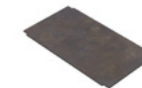
size: L/M/S_164/S
underside always with metal strut (top view)



size: L/M/S_164/S
underside always with metal strut (bottom view)



size: XS
underside always without metal strut (both sides look the same)

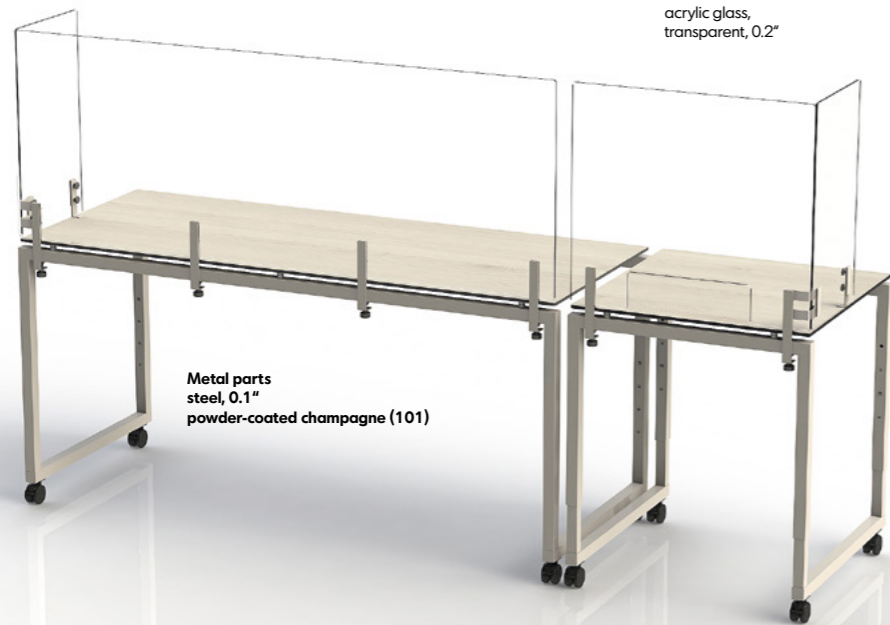


FRONTSIELD

Protect your VENTA buffet with transparent acrylic shields

The new sneezeguard is available as one side or double side version.

Shield:
acrylic glass,
transparent, 0.2"



Metal parts
steel, 0.1"
powder-coated champagne (101)

application:

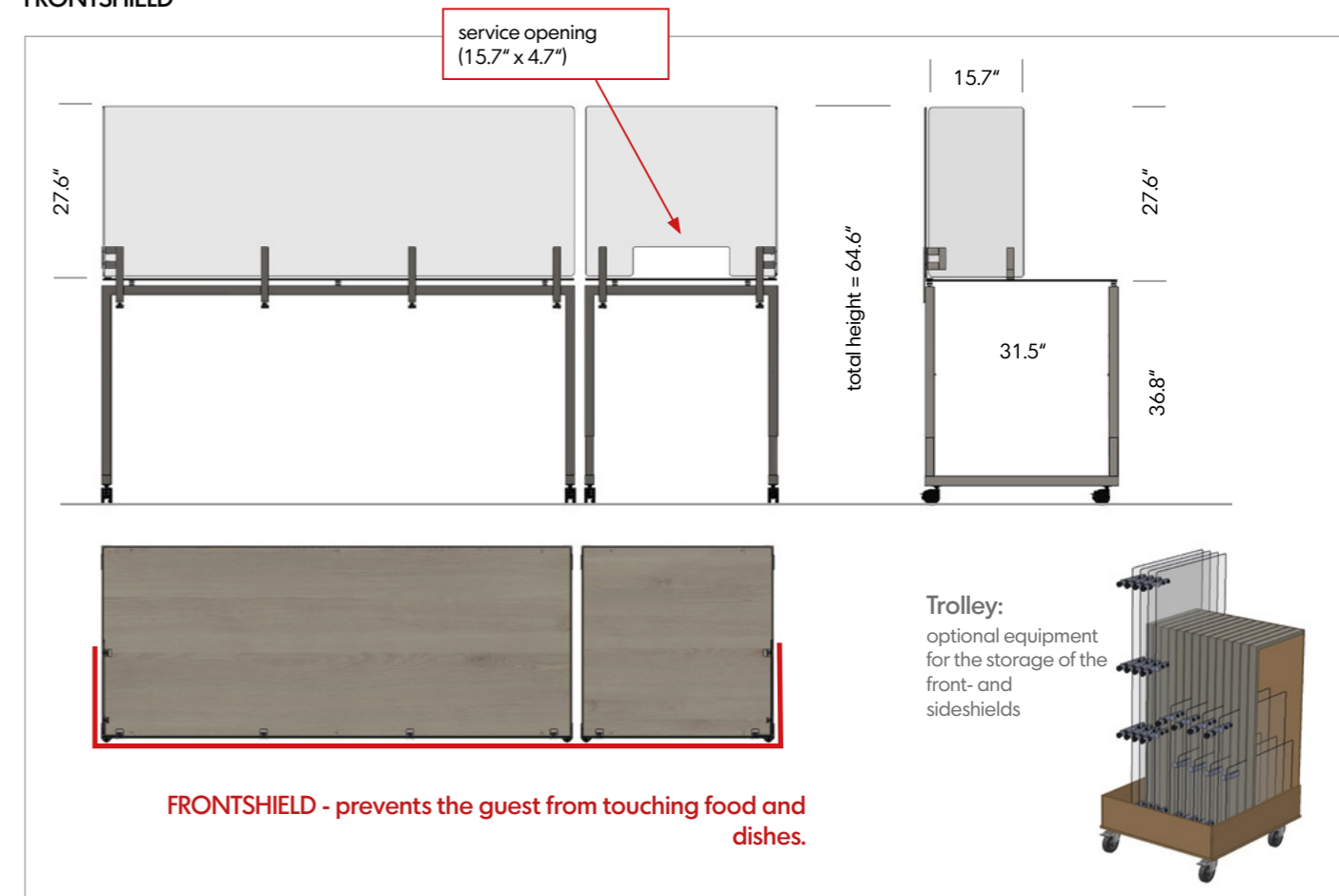
Mount the transparent acrylic glass to your VENTA table and protect your guests from disease by preventing the guests from touching food and dishes.

A service employee behind the table arranges the guest's selection on a plate and serves the plate through the service opening.

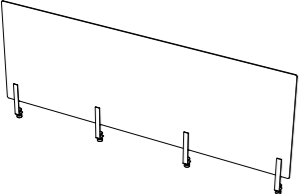
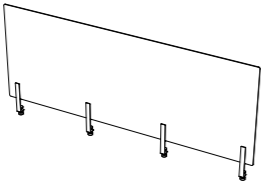
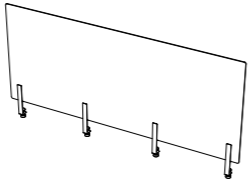
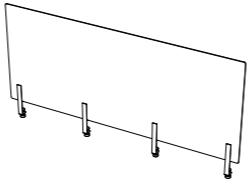
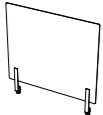
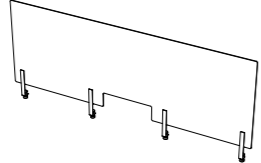
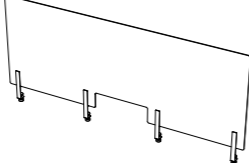
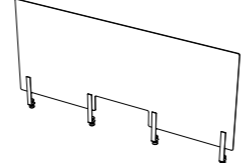
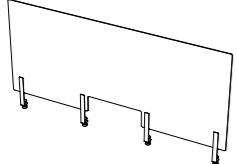
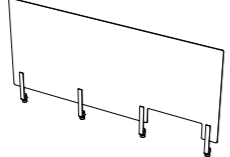
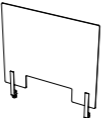
Every FRONTSIELD can be mounted with special clamps on the table base frame.

The SIDESHIELD will be mounted on an already installed FRONTSIELD. The material of the clamps is stainless steel with powder coating according to the color of the base frame. The shield itself is made in transparent acrylic glass.

FRONTSIELD



FRONTSHIELD

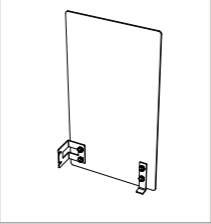
<p>FRONTSHIELD_STAGE_L_70 Item No.: 66043 [LxWxH]: 76.8" x 1.7" x 32.3"</p> 	<p>FRONTSHIELD_STAGE_M_70 Item No.: 66044 [LxWxH]: 70.5" x 1.7" x 32.3"</p> 	<p>FRONTSHIELD_STAGE_S_164_70 Item No.: 66045 [LxWxH]: 64.2" x 1.7" x 32.3"</p> 	<p>FRONTSHIELD_STAGE_S_70 Item No.: 66046 [LxWxH]: 62.6" x 1.7" x 32.3"</p> 
<p>FRONTSHIELD_STAGE_XS_70 Item No.: 66047 [LxWxH]: 31.1" x 1.7" x 32.3"</p> 	<p>FRONTSHIELD_APERTURE_STAGE_L_70 Item No.: 66049 [LxWxH]: 76.8" x 1.7" x 32.3"</p> 	<p>FRONTSHIELD_APERTURE_STAGE_M_70 Item No.: 66050 [LxWxH]: 70.5" x 1.7" x 32.3"</p> 	<p>FRONTSHIELD_AP_STAGE_S_164_70 Item No.: 66051 [LxWxH]: 64.2" x 1.7" x 32.3"</p> 
<p>FRONTSHIELD_APERTURE_STAGE_S_70 Item No.: 66052 [LxWxH]: 62.6" x 1.7" x 32.3"</p> 	<p>FRONTSHIELD_SIDE_AP_STAGE_S_70 Item No.: 66053 [LxWxH]: 62.6" x 1.7" x 32.3"</p> 	<p>FRONTSHIELD_APERTURE_STAGE_XS_70 Item No.: 66055 [LxWxH]: 31.1" x 1.7" x 32.3"</p> 	

SIDESHIELDS

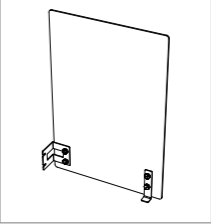
The picture shows the right SIDESHIELD (view from the backside). It is also possible to mount the metal parts on the other side and create the left SIDESHIELD.

Version to cover the half side of the depth of STAGE_80 table.

SIDESHIELD_STAGE_39_70
Item No.: 66048
[LxWxH]: 15.4" x 1.7" x 32.3"




SIDESHIELD_STAGE_48_70
Item No.: 66057
[LxWxH]: 18.9" x 1.7" x 32.3"



The picture shows the right SIDESHIELD (view from the backside). It is also possible to mount the metal parts on the other side and create the left SIDESHIELD.

Version to cover the complete depth of STAGE_50 table.



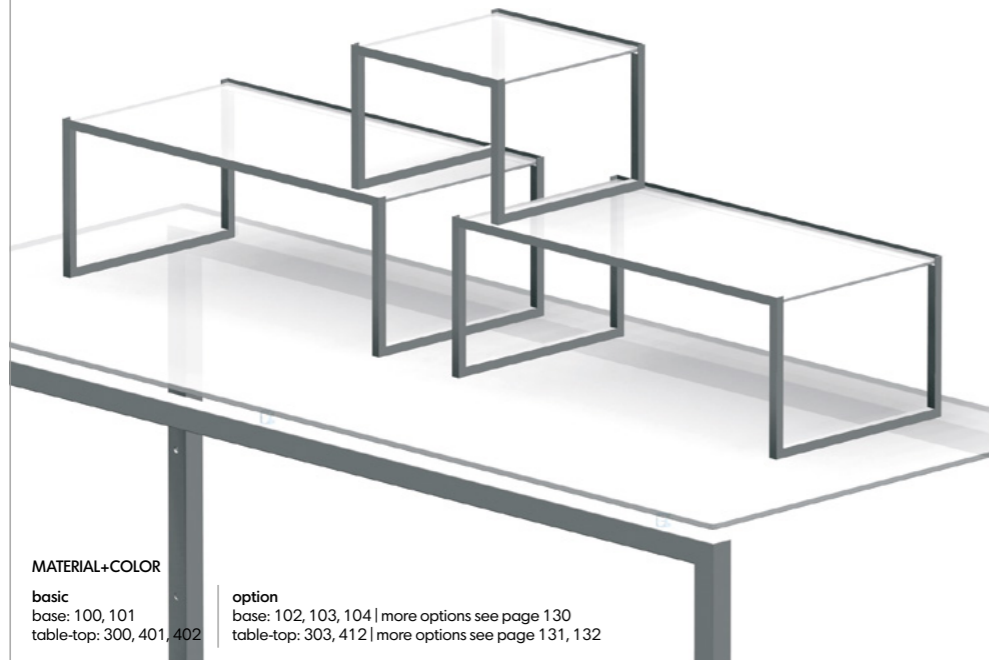
Both versions can only be mounted on an already installed FRONTSHIELD.

STAGE_ETAGERE | set of 4

Item No.: VE-32001100300
 L: 29.5" x 15.7" x 11.0"
 M: 27.6" x 14.2" x 10.0"
 XS: 12.6" x 12.6" x 9.1" (two pieces)
 total weight: 40.8 lb

Table-top
 safety glass 0.2"
 weight: 9.7 lb/8.2 lb/2 x 3.3 lb

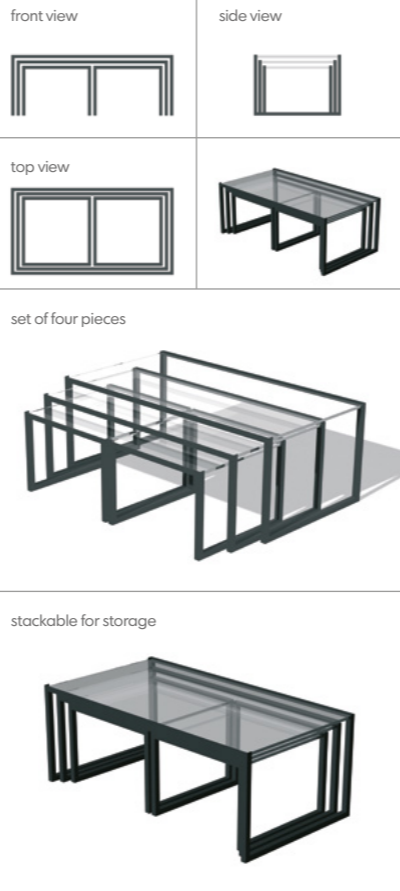
Base
 steel, powder-coated anthracite
 profile 0.6" x 0.6"
 weight: 3.1 lb/2.9 lb/2 x 1.3 lb



MATERIAL+COLOR

basic
 base: 100, 101
 table-top: 300, 401, 402

option
 base: 102, 103, 104 | more options see page 130
 table-top: 303, 412 | more options see page 131, 132



STAGE_ETAGERE_COOL

Item No.: VE-32005100303
 [LxWxH]: 15.7" x 15.7" x 5.9"
 weight: 15.4 lb

Base
 steel, powder-coated anthracite
 profile 0.6" x 0.6"
 weight: 15.4 lb

Table-Top
 safety glass 0.2" white glass, underside
 white colored,
 weight: 4.9 lb

Bowl (for COOL-plates)
 steel, .04" bended, powder-coated
 weight: 3.3 lb

COOL-Plate
 13.8" x 13.8" x 1.0"
 polystyrol, black
 weight: 5.3 lb

2h cooling
41°-50°F
 on the glass surface
 without electricity

works only with
 glass surface

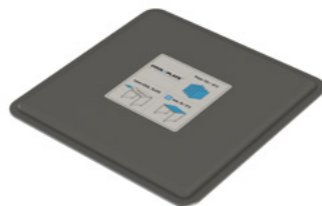


MATERIAL+COLOR

basic
 base: 100, 101
 table-top: 303, 307

option
 base: 102, 103, 104 | more options see page 130
 table-top: 308, 309, 310 | more options see page 131

VE-66003 / COOL_PLATE



explosion view/main parts



VE-99129 / Trolley_COOL_PLATES_8



Hot Buffet

Chafing-Dish



STAGE_80_M_CHAFING-DISH_4

Item No.: VE-81078100402
[LxWxH]: 70.9" x 31.5" x 33.7"
weight: 124.1 lb

Base
2 x main frame (VE-15801) 23.4 lb
2 x table leg (VE-15805) 13.7 lb
steel, powder-coated anthracite (100)
profile 1.6" x 1.6" with height
compensation

4 x Castor (item-no.: VE-11716)
diameter = 2.6"
weight: 1.1 lb

Height adjustable:
33.7" (lowest height)
36.8", 40.0", 43.1"

Table-Top (VE-11102)
compact panel, 0.4"
decor: ceramic anthracite
weight: 80.0 lb

2 x Magnetic cable duct (VE-11765)
[LxWxH]: 30.3" x 1.4" x 0.8"
weight: 2.1 lb
steel, .04" bended, powder-coated
anthracite

4 x Magnetic holder (VE-11762)
[LxWxH]: 6.8" x 2.6" x 0.9"
weight: 0.4 lb
steel, .04" bended, powder-coated
anthracite

perfect system
to present warm food in integ-
rated chafing-dish



MATERIAL+COLOR

basic
base: 100, 101
table-top: 401, 402

option
base: 102, 103, 104 | more options see page 130
table-top: 412, 414, 415 | more options see page 132

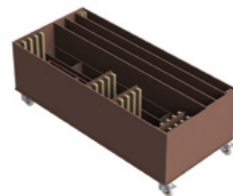
combination of STAGE_80_M_CHAFING-DISH_4 and
STAGE_80_XS_CHAFING-DISH_2 + BLUNDS



top view



Item No.: VE-99144
Trolley for max. 2 x table 80_M_CHAFING-DISH



weight: 143.3 lb [empty]/339.5 lb [full]

STAGE_80_XS_CHAFING-DISH_2

Item No.: VE-81080100402
[LxWxH]: 31.5" x 31.5" x 30.5"
weight: 74.1 lb

Base
2 x main frame (VE-15804) 14.6 lb
2 x table leg (VE-15805) 13.7 lb
steel, powder-coated anthracite (100)
profile 1.6" x 1.6" with height
compensation

4 x Castor (item-no.: VE-11716)
diameter = 2.6"
weight: 1.1 lb

Height adjustable:
30.5" (lowest height)
33.7", 36.8", 40.0"

Table-Top (VE-11054)
compact panel, 0.4"
decor: ceramic anthracite
weight: 39.7 lb

1 x Magnetic cable duct (VE-11765)
[LxWxH]: 30.3" x 1.4" x 0.8"
weight: 2.1 lb
steel, .04" bended, powder-coated
anthracite

2 x Magnetic holder (VE-11762)
[LxWxH]: 6.8" x 2.6" x 0.9"
weight: 0.4 lb
steel, .04" bended, powder-coated
anthracite

system suitable for
chafing-dish units
by WMF



MATERIAL+COLOR

basic
base: 100, 101
table-top: 401, 402

option
base: 102, 103, 104 | more options see page 130
table-top: 412, 414, 415 | more options see page 132

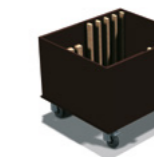
combination of STAGE_80_M_CHAFING-DISH_4 and
STAGE_80_XS_CHAFING-DISH_2



top view



Item No.: VE-99145
trolley for max. 2 x table 80_XS_CHAFING-DISH



weight: 110.2 lb [empty]/229.3 lb [full]

STAGE_80_M_CHAFING-DISH_3

Item No.: VE-81079100402
[LxWxH]: 70.9" x 31.5" x 33.7"
weight: 123.7 lb

Base
2 x main frame (VE-15801) 23.4 lb
2 x table leg (VE-15805) 13.7 lb
steel, powder-coated anthracite (100)
profile 1.6" x 1.6" with height
compensation

4 x Castor (item-no.: VE-11716)
diameter = 2.6"
weight: 1.1 lb

Height adjustable:
33.7" (lowest height)
36.8", 40.0", 43.1"

Table-Top (VE-11103)
compact panel, 0.4"
decor: ceramic anthracite
weight: 80.0 lb

2 x Magnetic cable duct (VE-11765)
[LxWxH]: 30.3" x 1.4" x 0.8"
weight: 2.1 lb
steel, .04" bended, powder-coated
anthracite

3 x Magnetic holder (VE-11762)
[LxWxH]: 6.8" x 2.6" x 0.9"
weight: 0.4 lb
steel, .04" bended, powder-coated
anthracite

perfect system
to present warm food in integ-
rated chafing-dish



MATERIAL+COLOR

basic
base: 100, 101
table-top: 401, 402

option
base: 102, 103, 104 | more options see page 130
table-top: 412, 414, 415 | more options see page 132

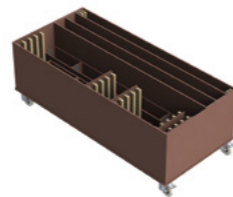
STAGE_80_M_CHAFING-DISH_3 + BLINDS



top view



Item No.: VE-99144
Trolley for max. 2 x table 80_M_CHAFING-DISH



weight: 143.3 lb [empty]/346.1 lb [full]

STAGE_80_XS_CHAFING-DISH_1

Item No.: VE-81080100402
[LxWxH]: 31.5" x 31.5" x 30.5"
weight: 71.7 lb

Base
2 x main frame (VE-15804) 14.6 lb
2 x table leg (VE-15805) 13.7 lb
steel, powder-coated anthracite (100)
profile 1.6" x 1.6" with height
compensation

4 x Castor (item-no.: VE-11716)
diameter = 2.6"
weight: 1.1 lb

Height adjustable:
30.5" (lowest height)
33.7", 36.8", 40.0"

Table-Top (VE-11057)
compact panel, 0.4"
decor: ceramic anthracite
weight: 39.7 lb

1 x Magnetic cable duct (VE-11765)
[LxWxH]: 30.3" x 1.4" x 0.8"
weight: 2.1 lb
steel, .04" bended, powder-coated
anthracite

1 x Magnetic holder (VE-11762)
[LxWxH]: 6.8" x 2.6" x 0.9"
weight: 0.4 lb
steel, .04" bended, powder-coated
anthracite

system suitable for
chafing-dish units
by WMF



MATERIAL+COLOR

basic
base: 100, 101
table-top: 401, 402

option
base: 102, 103, 104 | more options see page 130
table-top: 412, 414, 415 | more options see page 132

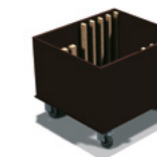
combination of STAGE_80_M_CHAFING-DISH_3 and
STAGE_80_XS_CHAFING-DISH_1



top view



Item No.: VE-99145
Trolley for max. 2 x table 80_XS_CHAFING-DISH



weight: 110.2 lb [empty]/229.3 lb [full]

STAGE_50_M_CHAFING-DISH_2

Item No.: VE-51042100402
[LxWxH]: 70.9" x 19.7" x 33.7"
weight: 86.9 lb

Base
2 x main frame (VE-15801) 23.4 lb
2 x table leg (VE-15806) 11.0 lb
steel, powder-coated anthracite (100)
profile 1.6" x 1.6" with height
compensation

4 x Castor (item-no.: VE-11716)
diameter = 2.6"
weight: 1.1 lb

Height adjustable:
33.7" (lowest height)
36.8", 40.0", 43.1"

Table-Top (VE-11104)
compact panel, 0.4"
decor: ceramic anthracite
weight: 46.3 lb

1 x Magnetic cable duct (VE-11765)
[LxWxH]: 30.3" x 1.4" x 0.8"
weight: 2.1 lb
steel, .04" bended, powder-coated
anthracite

2 x Magnetic holder (VE-11762)
[LxWxH]: 6.8" x 2.6" x 0.9"
weight: 0.4 lb
steel, .04" bended, powder-coated
anthracite

perfect system
to present warm food in
integrated chafing-dish



MATERIAL+COLOR

basic
base: 100, 101
table-top: 401, 402

option
base: 102, 103, 104 | more options see page 130
table-top: 412, 414, 415 | more options see page 132

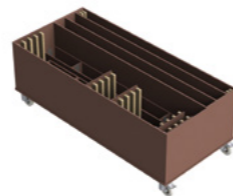
combination of STAGE_50_M_CHAFING-DISH_2 and
STAGE_50_XS_CHAFING-DISH_1 + SHELF



top view



Item No.: VE-99144
Trolley for max. 2 x table 50_M_CHAFING-DISH



weight: 143.3 lb [empty]/339.5 lb [full]

STAGE_50_XS_CHAFING-DISH_1

Item No.: VE-51043100402
[LxWxH]: 31.5" x 31.5" x 30.5"
weight: 64.2 lb

Base
2 x main frame (VE-15804) 14.6 lb
2 x table leg (VE-15806) 11.0 lb
steel, powder-coated anthracite (100)
profile 1.6" x 1.6" with height
compensation

4 x Castor (item-no.: VE-11716)
diameter = 2.6"
weight: 1.1 lb

Height adjustable:
30.5" (lowest height)
33.7", 36.8", 40.0"

Table-Top (VE-11057)
compact panel, 0.4"
decor: ceramic anthracite
weight: 29.5 lb

1 x Magnetic cable duct (VE-11765)
[LxWxH]: 30.3" x 1.4" x 0.8"
weight: 2.1 lb
steel, .04" bended, powder-coated
anthracite

1 x Magnetic holder (VE-11762)
[LxWxH]: 6.8" x 2.6" x 0.9"
weight: 0.4 lb
steel, .04" bended, powder-coated
anthracite

system suitable for
chafing-dish units
by WMF



MATERIAL+COLOR

basic
base: 100, 101
table-top: 401, 402

option
base: 102, 103, 104 | more options see page 130
table-top: 412, 414, 415 | more options see page 132

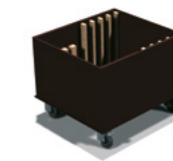
combination of STAGE_50_M_CHAFING-DISH_2 and
STAGE_50_XS_CHAFING-DISH_1



top view



Item No.: VE-99145
Trolley for max. 2 x table 50_XS_CHAFING-DISH



weight: 110.2 lb [empty]/273.4 lb [full]

Cold Buffet

Cooling Plate | Ice Well





COOL-Table

Our exclusive STAGE_80_XS_COOL table with integrated cold plates works without the need for any power cables.

You place this table anywhere in the room – no need for power sockets.

Before use, the cold plates must be stored in the freezer room of the hotel or event location for around twelve hours at 0°F. Then the COOL table can be used for approximately five hours.

The temperature of the table surface is approx. 41°F. The table is designed for indoor use with an ambient temperature of approx. 70°F.

Outdoor use with higher temperatures is not possible.

STAGE_80_XS_COOL

Item No.: VE-81007100307
[LxWxH]: 31.5" x 31.5" x 30.5"
weight: 107.1 lb

Base
2 x main frame (VE-15804) 14.6 lb
2 x table leg (VE-15805) 13.7 lb
steel, powder-coated anthracite (100)
profile 1.6" x 1.6" with height
compensation

Bowl_80_XS_COOL
(VE-15001)
metal, powder-coated, anthracite
weight: 18.3 lb

Table-top
(VE-13006)
safety glass 0.4" 31.1" x 31.1"
underside black colored,
weight: 33.1 lb

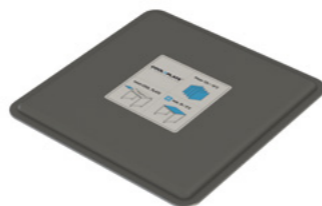
COOL PLATE (4x)
(VE-66003)
13.8" x 13.8" x 1.0"
polystyrene, color: black
weight: 5.3 lb

4 x Castor (item-no.: VE-11716)
diameter = 2.6"
weight: 1.1 lb

5h cooling
41°-50°F
on the table surface
without electricity

Preparation:
Place the COOL-PLATE for 12
hours inside a freezer at 0°F
in vertical position.

VE-66003 / COOL_PLATE



explosion view



works only with
glass surface

height can be
adjusted
(30.5" - 39.6")

MATERIAL+COLOR

basic
base: 100, 101
table-top: none

option
base: 102, 103, 104 | more options see page 130
table-top: 303, 307, 308 | more options see page 131

STAGE_50_XS_COOL

Item No.: VE-51029100402
[LxWxH]: 31.5" x 19.7" x 30.5"
weight: 69.2 lb

Base
2 x main frame (VE-15804) 14.6 lb
2 x table leg (VE-15806) 11.0 lb
steel, powder-coated anthracite (100)
profile 1.6" x 1.6" with height
compensation

Bowl_50_XS_COOL
(VE-15007)
metal, powder-coated, anthracite
weight: 11.0 lb

Table-top
(VE-13029)
safety glass 0.4" 31.1" x 19.3"
underside black colored,
weight: 20.9 lb

COOL PLATE (2x)
(VE-66003)
13.8" x 13.8" x 1.0"
polystyrene, color: black
weight: 5.3 lb

4 x Castor (item-no.: VE-11716)
diameter = 2.6"
weight: 1.1 lb

5h cooling
41°-50°F
on the table surface
without electricity

Preparation:
Place the COOL-PLATE for 12
hours inside a freezer at 0°F
in vertical position.

works only with
glass surface

height can be
adjusted
(30.5" - 39.6")

MATERIAL+COLOR

basic
base: 100, 101
table-top: none

option
base: 102, 103, 104 | more options see page 130
table-top: 303, 307, 308 | more options see page 131

VE-99129 / Trolley_COOL_PLATES_8



VE-99132 / Trolley_COOL_PLATES_4B



weight: 137.3 lb [empty] / 306.7 lb [full]



STAGE_80_XS_ICE_WELL

The ICE WELL with a depth of 7.9" is designed for cooling bottles. The entire well is filled with ice cubes. The well is equipped with a drainage tap and thus offers the possibility to drain the entire contents (melted ice = water) after use. A bucket can be placed under the table when the shut-off valve gets opened. In addition, a 1/1 GN grid basket can be used in the ice well. In this way the not yet melted ice can be easily removed. The ice well is available in two sizes (31.5" x 31.5" and 19.7" x 31.5") for a buffet depth of 31.5". The tub can be closed with the supplied insert plates (two pieces each) so that the table top can be used as a shelf.



Item No.: 81092100414

Useful Equipment

The perforated 1/1 GN container help you to remove the ice cubes out of the ICE WELL.



Drain Tap

STAGE_80_XS_ICE_WELL

Item No.: VE-81092100402
[LxWxH]: 31.5" x 31.5" x 30.5"
weight: 104.3 lb

Base
2 x main frame (VE-15804) 14.6 lb
2 x table leg (VE-15805) 13.7 lb
steel, powder-coated anthracite (100)
profile 1.6" x 1.6" with height
compensation

4 x Castor (item-no.: VE-11716)
diameter = 2.6"
weight: 1.1 lb

Height adjustable / grid = 3.1"
30.5" (lowest height)
33.7", 36.8", 40.0"

Table-top (VE-14059)
compact laminate 0.4"
ceramic anthracite (402)
weight: 9.3 lb

Housing_80_XS_ICE_WELL
(VE-15041)
metal, powder-coated, anthracite
weight: 48.9 lb

table opening closed with lid



explosion view



height can be
adjusted
(30.5" - 40.0")

MATERIAL+COLOR

basic
base: 100, 101
table-top: 401, 402

option
base: 102, 103, 104 | more options see page 130
table-top: 412, 414, 415 | more options see page 132

STAGE_50_XS_ICE_WELL

Item No.: VE-51092100402
[LxWxH]: 31.5" x 19.7" x 30.5"
weight: 77.2 lb

Base
2 x main frame (VE-15804) 14.6 lb
2 x table leg (VE-15806) 11.0 lb
steel, powder-coated anthracite (100)
profile 1.6" x 1.6" with height
compensation

4 x Castor (item-no.: VE-11716)
diameter = 2.6"
weight: 1.1 lb

Height adjustable:
30.5" (lowest height)
33.7", 36.8", 40.0"

Table-top (VE-14060)
compact laminate 0.4"
ceramic anthracite (402)
weight: 7.3 lb

Housing_50_XS_ICE_WELL
(VE-15042)
metal, powder-coated, anthracite
weight: 31.1 lb

table opening closed with lid



explosion view



height can be
adjusted
(30.5" - 40.0")

MATERIAL+COLOR

basic
base: 100, 101
table-top: 401, 402

option
base: 102, 103, 104 | more options see page 130
table-top: 412, 414, 415 | more options see page 132

Service Furniture

Backbar | Service-Cart | Rack | Coffee Stations | Cupboard | Hospi Desk





STAGE_50_BACKBAR_160

STAGE_50_BACKBAR_160
 Item No.: VE-34101100402
 [LxWxH]: 63.0" x 19.7" x 71.9"
 weight: 218.3 lb

metal parts / 1
 Item No.: VE-15816100
 [LxWxH]: 72.0" x 19.7" x 5.9"
 weight: 48.5 lb

metal parts / 2
 Item No.: VE-15817100
 [LxWxH]: 59.4" x 12.2" x 1.6"
 weight: 38.6 lb

top and bottom shelf (2 x)
 Item No.: VE-14071402
 [LxWxH]: 72.0" x 19.7" x 5.9"
 weight: 26.0 lb

middle shelf (3 x)
 Item No.: VE-14072402
 [LxWxH]: 59.4" x 12.2" x 1.6"
 weight: 26.0 lb

4 x Castor
 item-no.: VE-11716
 diameter = 2.6"
 weight: 1.1 lb

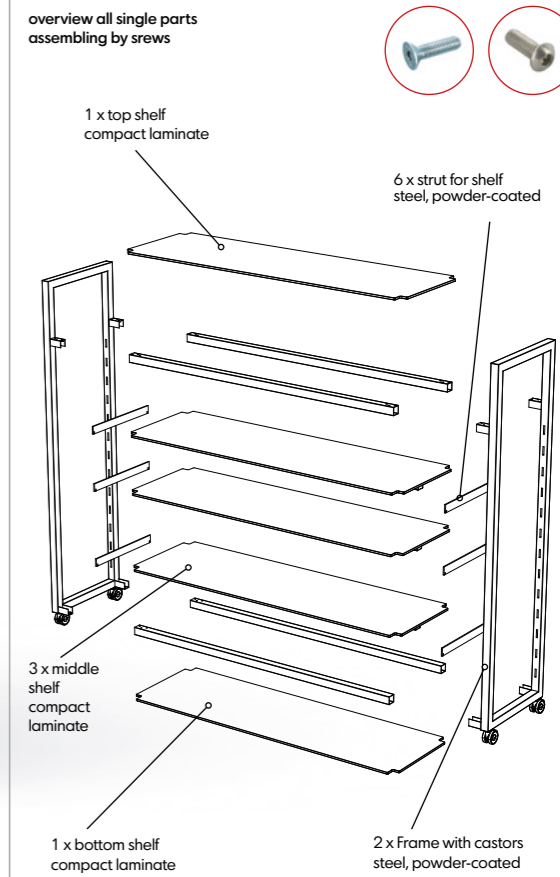


MATERIAL+COLOR

basic
 base: 100,101
 shelf: 401, 402

option
 base: 102, 103, 104 | more options see page 130
 shelf: 412, 414, 415 | more options see page 135

overview all single parts
 assembling by screws





STAGE_50_XS_SERVICE-CART

Item No.: VE-51041101401401
 [LxWxH]: 31.5" x 19.7" x 36.8"
 total weight: 71.7 lb

Base
 2 x main frame (VE-15804) 14.6 lb
 2 x table leg (VE-15806) 11.0 lb
 steel, powder-coated champagne (101)
 profile 1.6" x 1.6" with height
 compensation

4 x Castor (item-no.: VE-11716)
 diameter = 2.6"
 weight: 1.1 lb

Height adjustable:
 30.5" (lowest height)
 33.7", 36.8", 40.0"

Table-top (VE-14018)
 compact laminate 0.4"
 premium white (401)
 weight: 19.4 lb

SHELF_STAGE_50_XS
Item No.: VE-50007100401
 [LxWxH]: 29.1" x 16.9" x 13.9"
 weight: 14.3 lb

SHELF_LOW_STAGE_50_XS
Item No.: VE-50026401
 [LxWxH]: 31.1" x 17.3" x 0.4"
 weight: 11.2 lb

Additional Equipment
 (please order separately)
 blinds in metal with decor cut-outs
 (BAMBOO, LEAF, STRIPES design) or in
 compact panel (thickness of 0.1"),
 decor: e.g. ceramic anthracite and
 many more options



The small buffet table **STAGE_50_XS** and two additional shelves result in a new product: the **VENTA SERVICE-CART**.

This very useful table offers a wide range of applications:

Small ordering table for serving, as a small tea trolley for meetings or simply equipped with a blind as practical storage space.

MATERIAL+COLOR

basic
 base: 100,101
 table-top: 401, 402
 shelf: 401, 402

option
 base: 102, 103, 104 | more options see page 130
 table-top: 412, 414, 415 | more options see page 132
 shelf: 412, 414, 415 | more options see page 132



STAGE_80_XS_RACK

STAGE_80_XS_RACK
 Item No.: VE-81088264402
 [LxWxH]: 31.5" x 31.5" x 36.8"
 weight: 241.8 lb

Rack
 chipboard, coated, all-round with
 ABS edge, material thickness: 1.5"

Table-top
 Item No.: VE-14018
 compact laminate 0.4"
 ceramic anthracite (402)
 weight: 19.4 lb

Castor (4 pieces)
 Item No.: VE-11716
 diameter = 2.6"
 weight: 1.1 lb

Alternative:

Table-top (VE-13006)
 safety glass 0.4"
 transparent (300),
 white colored (303)
 weight: 33.1 lb



SPECIAL FEATURES:

magnetic „WOOD“
 It is possible to close the rack
 with the VENTA Frontblind

frontside with three compart-
 ments / backside with two
 compartments

VE-81088267401 / side with three compartments



VE-81088267401 / side with two compartments



MATERIAL+COLOR

basic
 rack: 264, 267
 table-top: 401, 402

option
 rack: no other color options
 table-top: 412, 414, 415 | more options see page 132

Coffee Station + Cupboard

Square | Rectangular



STAGE_80_COFFEE_STATION_SQ

Item No.: VE-81017101267401
 [LxWxH]: 31.5" x 31.5" x 36.8"
 weight: 154.3 lb

Base
 steel, powder-coated champagne (101)
 profile 1.6" x 1.6" castors
 diameter=3.0" (all with brake)

Table-Top
 compact laminate 0.4" with one hole for
 disposal of coffee dregs
 decor: premium white (401)

Designed for WMF
 coffee machine (1500 S),
 but can be customized also
 for other brands.



Only available on castors
 diameter = 3.0"

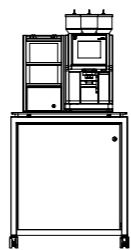
MATERIAL+COLOR

basic
 base: 100, 101
 cupboard: 267, 268
 table-top: 401, 402

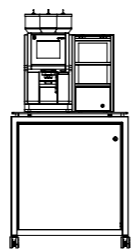
option
 base: 102, 103, 104 | more options see page 130
 cupboard: 254, 255, 260 | more options see page 132
 table-top: 412, 414, 415 | more options see page 132



setup 1 (standard)



setup 2



STAGE_80_COFFEE_STATION_RE

Item No.: VE-80017100267401
 [LxWxH]: 31.5" x 31.5" x 36.8"
 weight: 176.4 lb

Base
 steel, powder-coated anthracite (100)
 profile 1.6" x 1.6" castors
 diameter=3.0" (all with brake)

Table-Top
 compact laminate, 0.4" with one hole for
 disposal of coffee dregs
 decor: ceramic anthracite (402)

Designed for WMF
 coffee machine (1500 S),
 but can be customized also
 for other brands.

Cupboard
 melamine faced, chipboard 0.7" two doors which can be locked,
 decor: ceramic anthracite (402)



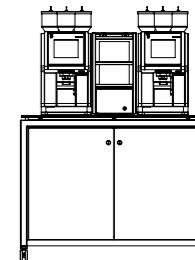
Only available on castors
 diameter = 3.0"

MATERIAL+COLOR

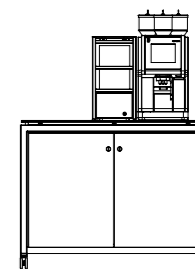
basic
 base: 100, 101
 cupboard: 267, 268
 table-top: 401, 402

option
 base: 102, 103, 104 | more options see page 130
 cupboard: 254, 255, 260 | more options see page 132
 table-top: 412, 414, 415 | more options see page 132

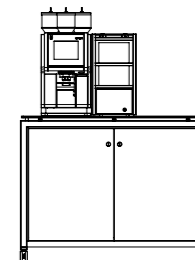
setup 1
 (standard)



setup 2



setup 3



STAGE_80_CUPBOARD_SQ

Item No.: VE-81043100268402
[LxWxH]: 31.5" x 31.5" x 36.8"
weight: 154.3 lb

Base
steel, powder-coated anthracite (100)
profile 1.6" x 1.6" castors
diameter=3.0" (all with brake)

Table-Top (VE-14018)
compact laminate, 0.4"
decor: ceramic anthracite (402)
weight: 19.4 lb

Cupboard
melamine faced, chipboard 0.7"
one door which can be locked,
decor: ceramic anthracite (402)

The cupboard has inside two shelves.
The height of the shelves is adjustable.
One door which can be locked.

Please define the door stop side when
you place an order (where the hinges
should be fixed).



MATERIAL+COLOR

basic
base: 100, 101
cupboard: 267, 268
table-top: 401, 402

option
base: 102, 103, 104 | more options see page 130
cupboard: 254, 255, 260 | more options see page 132
table-top: 412, 414, 415 | more options see page 132

Only available on castors
diameter = 3.0"

top view
hinge side has to be defined



two adjustable shelves inside



Alternative / Table-top (VE-13XXX)
safety glass 0.4" underside black colored (307)
weight: XXX kg



STAGE_80_CUPBOARD_RE

Item No.: VE-81082100268402
[LxWxH]: 47.2" x 31.5" x 36.8"
weight: 176.4 lb

Base
steel, powder-coated anthracite (100)
profile 1.6" x 1.6" castors
diameter=3.0" (all with brake)

Table-Top
compact panel, 0.4"
decor: ceramic anthracite (402)
weight: 22.0 lb

Cupboard
melamine faced, chipboard 0.7"
two doors which can be locked



MATERIAL+COLOR

basic
base: 100, 101
cupboard: 267, 268
table-top: 401, 402

option
base: 102, 103, 104 | more options see page 130
cupboard: 254, 255, 260 | more options see page 132
table-top: 412, 414, 415 | more options see page 132

Only available on castors
diameter = 3.0"

Alternative / Table-top (VE-13056)
safety glass 0.4" underside black colored (307),
weight: 50.7 lb



The cupboard has inside two shelves
in each side. The height of the shelves
is adjustable.





STAGE_50_L_HOSPI_DESK

Item No.: VE-51030100402
 [LxWxH]: 77.2" x 19.7" x 43.1"
 total weight: 70.8 lb

Base
 2 x main frame (VE-15800) 25.6 lb
 2 x table leg (VE-15806) 11.0 lb
 steel, powder-coated anthracite (100)
 profile 1.6" x 1.6" with height
 compensation

4 x Castor (item-no.: VE-11716)
 diameter = 2.6"
 weight: 1.1 lb

Height with BLINDS:
 43.1" (fix)

Table-top (VE-14020)
 compact laminate 0.4"
 ceramic anthracite (402)
 weight: 33.1 lb

1 x FRONTBLIND_STAGE_L_108
 Item No.: VE-38050100402
 [LxWxH]: 77.2" x 38.7" x 0.7"
 weight: 17.2 lb

2 x SIDEBLIND_STAGE_50_108
 Item No.: VE-38056100402
 [LxWxH]: 19.7" x 38.7" x 0.7"
 weight: 4.4 lb



MATERIAL+COLOR

basic
 base: 100,101
 table-top: 401, 402
 cover: 401, 402

option
 base: 102, 103, 104 | more options see page 130
 table-top: 412, 414, 415 | more options see page 132
 cover: 412, 414, 415 | more options see page 135

surface (compact panel / high
 pressure laminate) can be used
 for sticking logos (optional
 application)

OPTIONAL: SHELF_47

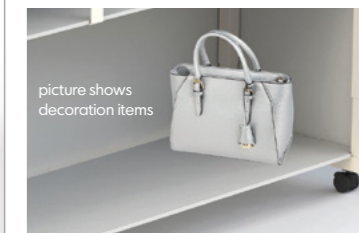


backside view



picture shows
 decoration items

OPTIONAL: SHELF_LOW



picture shows
 decoration items

Cocktail Area

Mobile Bar | High Tables | High Chair



Mobile Bar system with
Backbar and Stools

M Table (70.9" x 19.7")
S Table (63.0" x 31.5")



Mobile Bar Blinds

The Mobile Bar – a design experience, with an exclusive, modern design, flexibility and versatility.

The proven STAGE buffet system from our VENTA Interior program can be transformed into a mobile bar. Instead of the glass tops that are already part of all versions, we have added an additional table top option to our portfolio. The compact top is a durable plastic surface.

We use this top both as a tabletop and as a fascia, transforming a STAGE buffet table into a mobile bar in just a few seconds. With additional magnetic plates (FRONTBLIND and SIDEBLIND) the bar table (STAGE_80_M) is covered.

To make it perfect, you only need one more piece of furniture from the STAGE buffet system. With the STAGE_50_L buffet table as a counter, the mobile bar is ready for use. The table top of the STAGE_50_L can be made of a glass top (especially color matching) or a compact top. There are almost no limits to the possible combinations. The mobile bar can be adapted to the color theme of the room or the event theme.

We offer two standard versions of the mobile bar - the corresponding table frames in the standard colors anthracite and champagne and the table tops and blinds in ceramic anthracite and premium white.

STAGE_MOBILE_BAR_BLINDS (Table L + Table M + BLINDS)

Table: STAGE_50_L
Item No.: VE-51002100402
[LxWxH]: 77.2" x 19.7" x 36.8"
total weight: 70.8 lb
details on page: 32

Table: STAGE_80_M
Item No.: VE-81003100402
[LxWxH]: 70.9" x 31.5" x 33.7"
total weight: 78.9 lb
details on page: 29

FRONTBLIND_STAGE_M
Item No.: VE-38044100402
[LxWxH]: 70.9" x 32.4" x 0.7"
weight: 13.2 lb
details on page: 52

SIDEBLIND_STAGE_80
Item No.: VE-38048100402
[LxWxH]: 31.5" x 32.4" x 0.7"
weight: 6.0 lb
details on page: 53

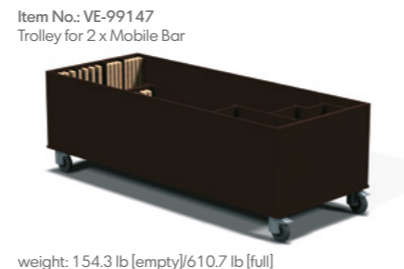
bar-system
applicable with all
STAGE-tables



MATERIAL+COLOR

basic
base: 100, 101
table-top: 300, 401, 402
cover: 401, 402

option
base: 102, 103, 104 | more options see page 130
table-top: 303, 305, 307 | more options see page 132
cover: 412, 414, 415 | more options see page 135



weight: 154.3 lb [empty]/610.7 lb [full]

STAGE_MOBILE_BAR_BLINDS (Table L + Table M + BLINDS)

perfect system
to build up a new
application in a few seconds ...

1 x STAGE_50_L
1 x STAGE_80_M
1 x FRONTBLIND_M
2 x SIDEBLIND_80

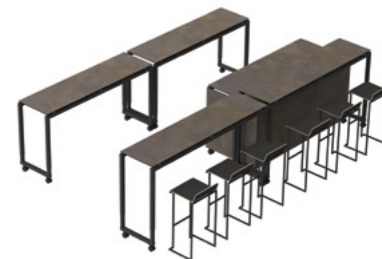
table-top size:
76.8" x 19.3"
material options:
compact panel
or glass top



table on wheels

space for equipment
(refrigerator/wastebin)

optional equipment/arrangement





SCAPE_70 _RO_105_T / versions of material + color



SCAPE_70_RO_105_T

Item No.: VE-24027100300300
 [LxWxH]: 27.6" x 27.6" x 41.3"
 weight: 41.4 lb

Lower-tray
 safety glass, d = 16.7" x 0.2"
 (VE-13014),
 weight: 3.3 lb

Base
 foldable base frame without side holder
 (VE-15051)
 steel, powder-coated anthracite (100)
 profile 1.2" x 1.2", weight: 16.1 lb

Table-top
 safety glass, d = 27.6" x 0.4",
 underside with 4 x connectors
 (VE-13007), weight: 22.0 lb

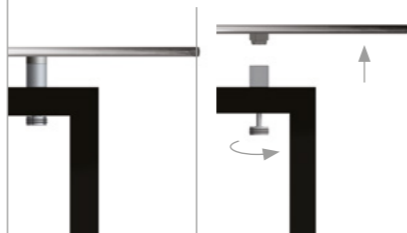


MATERIAL+COLOR

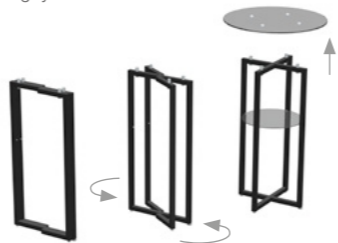
basic
 base: 100, 101
 table-top: 300, 401, 402

option
 base: 102, 103, 104 | more options see page 130
 table-top: 303, 412 | more options see page 131, 132

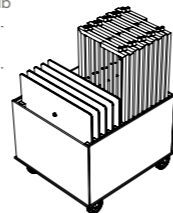
connection between table-top and base



folding-system



Item No.: VE-99137
 [LxWxH]: 30.7" x 34.3" x 26.4"
 weight: 99.2 lb



PLATE_37

Item No.: VE-31001100280
 [LxWxH]: 15.4" x 16.2" x 34.1"
 seat-height: 30.1"
 weight: 9.9 lb

Base
 steel, powder-coated anthracite
 profile 0.6" x 0.6"
 weight: 7.7 lb

Seat
 plywood 0.4" bent, black
 weight: 2.2 lb



MATERIAL+COLOR

basic
 base: 100, 101
 seat: 279, 280

option
 base: 102, 103, 104 | more options see page 130
 seat: no other color options

side view



back view



arrangement (3 x Stool_PLATE_37_WHITE)



Item No.: 99133
 Trolley for max. 10 x Stool_PLATE_37



weight: 35.3 lb [empty] / 134.5 lb [full]

STAGE_50_L

Item No.: VE-51002100402
L: 77.2" x 19.7" x 36.8"
total weight: 70.8 lb

Base
2 x main frame (VE-15800) 25.6 lb
2 x table leg (VE-15806) 11.0 lb
steel, powder-coated anthracite (100)
profile 1.6" x 1.6" with height
compensation

4 x Castor (item-no.: VE-11716-4)
diameter = 2.6"
weight: 1.1 lb

Height adjustable:
36.8" (lowest height)
40.0", 43.1", 46.3"

Table-top (VE-14020)
compact laminate 0.4"
ceramic anthracite (402)
weight: 33.1 lb

Alternative:

Table-top (VE-13026)
safety glass 0.4"
transparent (300),
white colored (303)
weight: 52.9 lb

height can
be adjusted
(36.8"-46.3")

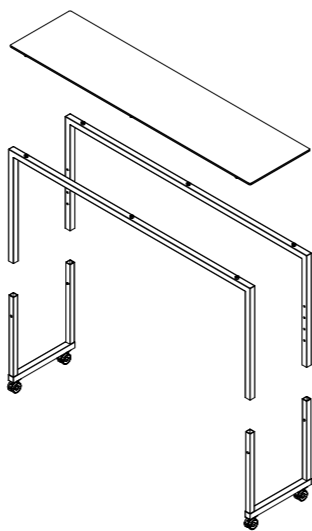


MATERIAL+COLOR

basic
base: 100, 101
table-top: 300, 401, 402

option
base: 102, 103, 104 | more options see page 130
table-top: 303, 412 | more options see page 131, 132

Assembly of individual parts without tools



Item No.: 99109
Trolley for 4 x STAGE_50_L (maximum load)



weight: 165.3 lb [empty] / 448.4 lb [full]

STAGE_50_M

Item No.: VE-51003100402
L: 77.2" x 19.7" x 33.7"
total weight: 64.2 lb

Base
2 x main frame (VE-15801) 23.4 lb
2 x table leg (VE-15806) 11.0 lb
steel, powder-coated anthracite (100)
profile 1.6" x 1.6" with height
compensation

4 x Castor (item-no.: VE-11716-4)
diameter = 2.6"
weight: 1.1 lb

Height adjustable:
33.7" (lowest height)
36.8", 40.0", 43.1"

Table-top (VE-14021)
compact laminate 0.4"
ceramic anthracite (402)
weight: 28.7 lb

Alternative:

Table-top (VE-13027)
safety glass 0.4"
transparent (300),
white colored (303)
weight: 48.5 lb

height can
be adjusted
(33.7"-43.1")

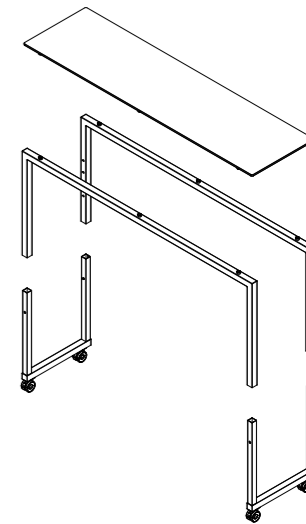


MATERIAL+COLOR

basic
base: 100, 101
table-top: 300, 401, 402

option
base: 102, 103, 104 | more options see page 130
table-top: 303, 412 | more options see page 131, 132

Assembly of individual parts without tools



Item No.: 99109
Trolley for 4 x STAGE_80_M (maximum load)



weight: 165.3 lb [empty] / 422.0 lb [full]

Foldable Tables

SCAPE | LEVEL

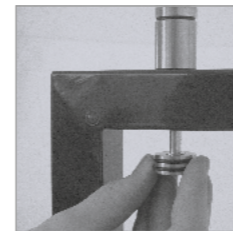


SCAPE_70 | Foldable Table System

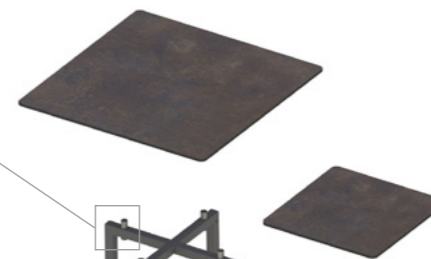
- > foldable table base
- > available in 3 heights (29.5" , 35.4" , 41.3")
- > with or without lower-tray
- > square or round table-top



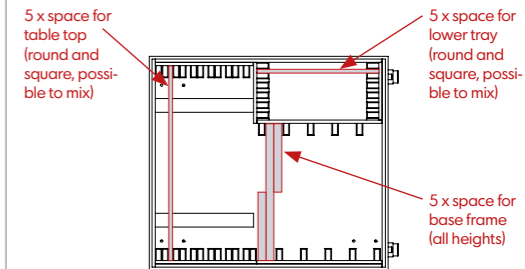
SCAPE_70 | Foldable Table System



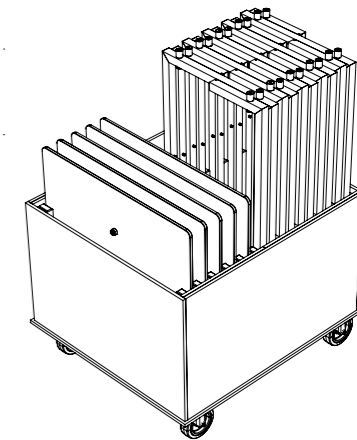
connection from the foot to the table top through a screw (not removable)



one adjustable foot on the bottom of the base frame



Item No.: VE-99137
[LxWxH]: 30.7" x 34.3" x 26.4"
weight: 99.2 lb



SCAPE_70_SQ_75

Item No.: VE-24010100402
[LxWxH]: 27.6" x 27.6" x 29.5"
total weight: 29.3 lb

Base
foldable base frame without side holder (VE-15046)
steel, powder-coated anthracite (100)
profile 1.2" x 1.2"
weight: 13.9 lb

Table-top
compact panel, 27.6" x 27.6" x 0.4" underside
with 4 x connectors (VE-14010)
weight: 15.4 lb



MATERIAL+COLOR

basic
base: 100, 101
table-top: 300, 401, 402

option
base: 102, 103, 104 | more options see page 130
table-top: 303, 412 | more options see page 131, 132

SCAPE_70_SQ_90

Item No.: VE-24011100402
[LxWxH]: 27.6" x 27.6" x 35.4"
total weight: 30.4 lb

Base
foldable base frame without side holder (VE-15047)
steel, powder-coated anthracite (100)
profile 1.2" x 1.2"
weight: 15.0 lb

Table-top
compact panel, 27.6" x 27.6" x 0.4" underside
with 4 x connectors (VE-14010)
weight: 15.4 lb



SCAPE_70_SQ_105

Item No.: VE-24012100402
[LxWxH]: 27.6" x 27.6" x 41.3"
total weight: 31.5 lb

Base
foldable base frame without side holder (VE-15048)
steel, powder-coated anthracite (100)
profile 1.2" x 1.2"
weight: 16.1 lb

Table-top
compact panel, 27.6" x 27.6" x 0.4" underside
with 4 x connectors (VE-14010)
weight: 15.4 lb



SCAPE_70_RO_75

Item No.: VE-24019100402
[LxWxH]: 27.6" x 27.6" x 29.5"
total weight: 26.0 lb

Base
foldable base frame without side holder (VE-15046)
steel, powder-coated anthracite (100)
profile 1.2" x 1.2"
weight: 13.9 lb

Table-top
compact panel, d = 27.6" x 0.4"
underside with 4 x connectors (VE-14007)
weight: 12.1 lb



MATERIAL+COLOR

basic
base: 100, 101
table-top: 300, 401, 402

option
base: 102, 103, 104 | more options see page 130
table-top: 303, 412 | more options see page 131, 132

SCAPE_70_RO_90

Item No.: VE-24020100402
[LxWxH]: 27.6" x 27.6" x 35.4"
total weight: 27.1 lb

Base
foldable base frame without side holder (VE-15047)
steel, powder-coated anthracite (100)
profile 1.2" x 1.2"
weight: 15.0 lb

Table-top
compact panel, d = 27.6" x 0.4"
underside with 4 x connectors (VE-14007)
weight: 12.1 lb



SCAPE_70_RO_105

Item No.: VE-24021100402
[LxWxH]: 27.6" x 27.6" x 41.3"
total weight: 28.2 lb

Base
foldable base frame without side holder (VE-15048)
steel, powder-coated anthracite (100)
profile 1.2" x 1.2"
weight: 16.1 lb

Table-top
compact panel, d = 27.6" x 0.4"
underside with 4 x connectors (VE-14007)
weight: 12.1 lb



SCAPE_70_SQ_75_T

Item No.: VE-24022100402
[LxWxH]: 27.6" x 27.6" x 29.5"
total weight: 35.1 lb

Base

foldable base frame with side holder (VE-15049)
steel, powder-coated anthracite (100)
profile 1.2" x 1.2" weight: 13.9 lb

Table-top

compact panel, 27.6" x 27.6" x 0.4" underside with 4 x
connectors (VE-14010), weight: 15.4 lb

Lower-tray

compact panel, 16.7" x 16.7" x 0.4" (VE-14031)
weight: 5.7 lb



MATERIAL+COLOR

basic

base: 100, 101
table-top: 300, 401, 402

option

base: 102, 103, 104 | more options see page 130
table-top: 303, 412 | more options see page 131, 132

SCAPE_70_SQ_90_T

Item No.: VE-24023100402
[LxWxH]: 27.6" x 27.6" x 35.4"
total weight: 36.2 lb

Base

foldable base frame with side holder (VE-15050)
steel, powder-coated anthracite (100)
profile 1.2" x 1.2" weight: 15.0 lb

Table-top

compact panel, 27.6" x 27.6" x 0.4" underside with 4 x
connectors (VE-14010), weight: 15.4 lb

Lower-tray

compact panel, 16.7" x 16.7" x 0.4" (VE-14031)
weight: 5.7 lb



SCAPE_70_SQ_105_T

Item No.: VE-24024100402
[LxWxH]: 27.6" x 27.6" x 41.3"
total weight: 37.3 lb

Base

foldable base frame with side holder (VE-15051)
steel, powder-coated anthracite (100)
profile 1.2" x 1.2" weight: 16.1 lb

Table-top

compact panel, 27.6" x 27.6" x 0.4" underside with 4 x
connectors (VE-14010), weight: 15.4 lb

Lower-tray

compact panel, 16.7" x 16.7" x 0.4" (VE-14031)
weight: 5.7 lb



SCAPE_70_RO_75_T

Item No.: VE-24025100402
[LxWxH]: 27.6" x 27.6" x 29.5"
total weight: 30.4 lb

Base

foldable base frame without side holder (VE-15049)
steel, powder-coated anthracite (100)
profile 1.2" x 1.2" weight: 13.9 lb

Table-top

compact panel, d = 27.6" x 0.4" underside with
4 x connectors (VE-14007), weight: 12.1 lb

Lower-tray

compact panel, d = 16.7" x 0.4" (VE-14031)
weight: 4.4 lb



MATERIAL+COLOR

basic

base: 100, 101
table-top: 300, 401, 402

option

base: 102, 103, 104 | more options see page 130
table-top: 303, 412 | more options see page 131, 132

SCAPE_70_RO_90_T

Item No.: VE-24026100402
[LxWxH]: 27.6" x 27.6" x 35.4"
total weight: 31.5 lb

Base

foldable base frame without side holder (VE-15050)
steel, powder-coated anthracite (100)
profile 1.2" x 1.2" weight: 15.0 lb

Table-top

compact panel, d = 27.6" x 0.4" underside with
4 x connectors (VE-14007), weight: 12.1 lb

Lower-tray

compact panel, d = 16.7" x 0.4" (VE-14031)
weight: 4.4 lb



SCAPE_70_RO_105_T

Item No.: VE-24027100402
[LxWxH]: 27.6" x 27.6" x 41.3"
total weight: 32.6 lb

Base

foldable base frame without side holder (VE-15051)
steel, powder-coated anthracite (100)
profile 1.2" x 1.2" weight: 16.1 lb

Table-top

compact panel, d = 27.6" x 0.4" underside with
4 x connectors (VE-14007), weight: 12.1 lb

Lower-tray

compact panel, d = 16.7" x 0.4" (VE-14031)
weight: 4.4 lb



SCAPE_180

Item No.: 24002100402
[LxWxH]: 70.9" x 27.6" x 35.4"
total weight: 66.8 lb

Base
foldable base frame (VE-15044)
steel, powder-coated anthracite (100)
profile 1.2" x 1.2" weight: 29.3 lb

Table-top
compact panel, 70.9" x 27.6" x 0.4"
underside with 7 x connectors
(VE-14011), weight: 37.5 lb

Height options
table height = 29.5" (VE-24001)
table height = 41.3" (VE-24003)

Alternative:

Table-top (VE-13001)
safety glass 0.4"
transparent (VE-13001300),
white colored (VE-13001303)
weight: 68.3 lb

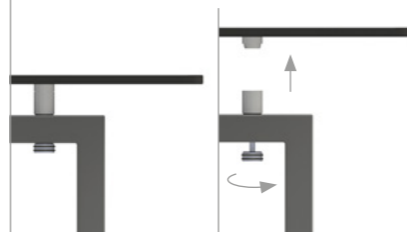


MATERIAL+COLOR

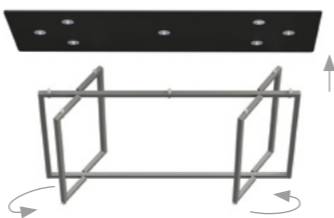
basic
base: 100, 101
table-top: 300, 401, 402

option
base: 102, 103, 104 | more options see page 130
table-top: 303, 412 | more options see page 131, 132

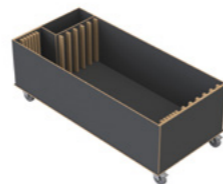
connection between table-top and base



folding-system



Item No.: 99136
Trolley for maximum 5 x SCAPE_180



weight: 158.7 lb [empty] / 492.7 lb [full]

LEVEL_150 | set of 3 items

Item No.: VE-26001100402
LEVEL_Table_150
[LxWxH]: 59.1" x 29.5" x 33.1"
weight: 41.9 lb

Base
foldable base frame (VE-15052)
steel, powder-coated anthracite (100)
profile 1.2" x 1.2" weight: 17.6 lb

Table-top
compact panel, 70.9" x 27.6" x 0.4"
underside with 3 x connectors
(VE-14011), weight: 24.3 lb

LEVEL_ETAGERE_100
[LxWxH]: 39.4" x 19.7" x 10.2"
weight: 16.8 lb

Feet
stainless steel, matt abraded
(VE-11224), weight: 3 x 1.5 lb

Table-top
compact panel, 39.4" x 19.7" x 0.4"
underside with 3 x connectors
(VE-14011), weight: 12.1 lb

LEVEL_ETAGERE_60
[LxWxH]: 23.6" x 11.8" x 7.9"
weight: 7.7 lb

Feet
stainless steel, matt abraded
(VE-11223), weight: 3 x 1.1 lb

Table-top
compact panel, 23.6" x 11.8" x 0.4"
underside with 3 x connectors
(VE-14011), weight: 4.4 lb



MATERIAL+COLOR

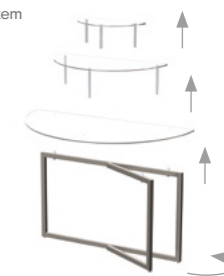
basic
base: 100, 101
table-top: 300, 401, 402

option
base: 102, 103, 104 | more options see page 130
table-top: 303, 412 | more options see page 131, 132

connection between table-top and feet



folding-system



Item No.: 99134
Trolley for max. 4 x LEVEL_150



weight: 169.8 lb [empty] / 435.2 lb [full]

Equipment

cable duct | rollerskate



CABLE_DUCT

Item No.: VE-11765
[LxWxH]: 30.3" x 1.4" x 0.8"
weight: 2.1 lb

Material
steel, .04" bended, powder-coated
anthracite

additional equip-
ment to hide the
cable

Item No.: VE-11766
[LxWxH]: 24.0" x 1.4" x 0.8"
weight: 1.9 lb

Material
steel, .04" bended, powder-coated
anthracite

Item No.: VE-11767
[LxWxH]: 15.7" x 1.4" x 0.8"
weight: 1.7 lb

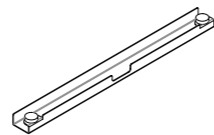
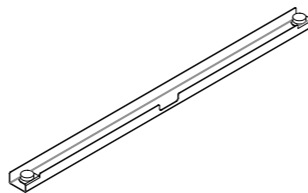
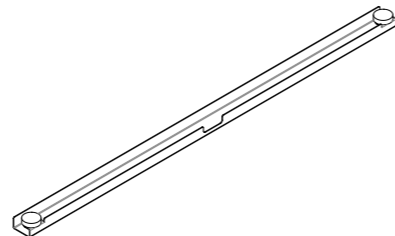
Material
steel, .04" bended, powder-coated
anthracite



MATERIAL+COLOR

basic
base: 100, 101

option
base: 102, 103, 104 | more options see page 130



ROLLERSKATE_QUADRO

Item No.: VE-66007
[LxWxH]: 23.6" x 23.6" x 3.9"
weight: 5.3 lb

Material
steel, 1.0" bended, powder-coated anthracite

additional equip-
ment to move the
table



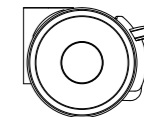
MATERIAL+COLOR

basic
base: 100, 101

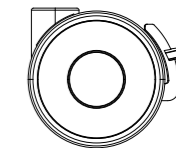
option
base: 102, 103, 104 | more options see page 130



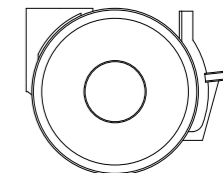
Item No.: VE-11715
[LxWxH]: 2.0" x 1.9" x 2.6" / diameter = 2.0" weight: 0.2
lb, material: housing polyamide, wheels: polyurethane



Item No.: VE-11716
[LxWxH]: 3.1" x 1.8" x 2.6" / diameter = 2.6" weight: 0.3
lb, material: housing polyamide, wheels: polyurethane



Item No.: VE-11741
[LxWxH]: 3.7" x 2.2" x 3.0" / diameter = 3.0" weight: 0.4
lb, material: housing polyamide, wheels: polyurethane



Material + Color

BASIC and OPTION

Büchin Design offers a wide range of materials and colors in two categories BASIC and OPTION.

The category LUXURY is only available for Gold and Silver colored glass tops.

All VENTA items have a unique five-digit item-number.

example: VE-24027 for the table model SCAPE_70_RO_105_T

To define the material+color of the model, just add the three-digit material code.

example: VE-24027 + 100 (base frame = anthracite) + 300 (table-top = glass, transparent) + 300 (lower-tray = glass, transparent).

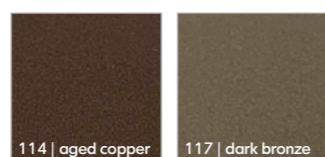
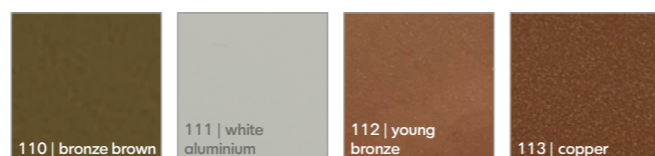
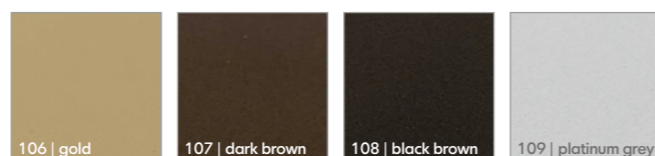
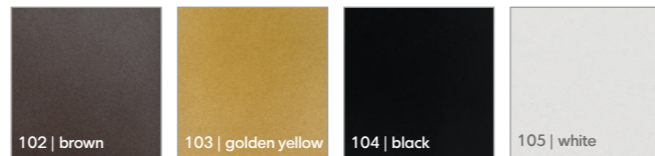


Metal | color options

BASIC | 2 colors



OPTION | 14 colors



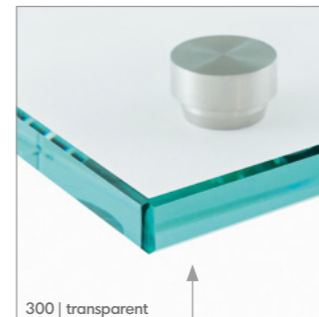
Code map:
 VE-XXXXXX~~XXXXXX~~
 item # base color top color

Additional Colors | select your color from IGP-range
 (number 58 / color code: IGP DURA face/pearl mica effect)

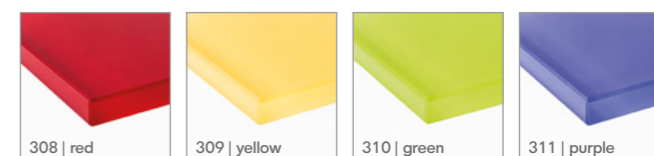
The images of the colors are similar but not binding.

Glass | color options

BASIC | only transparent glass (floatglass)

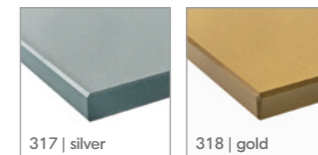


OPTION | eight colors



OPTION | choose any RAL color you like

LUXURY | two special metal colors



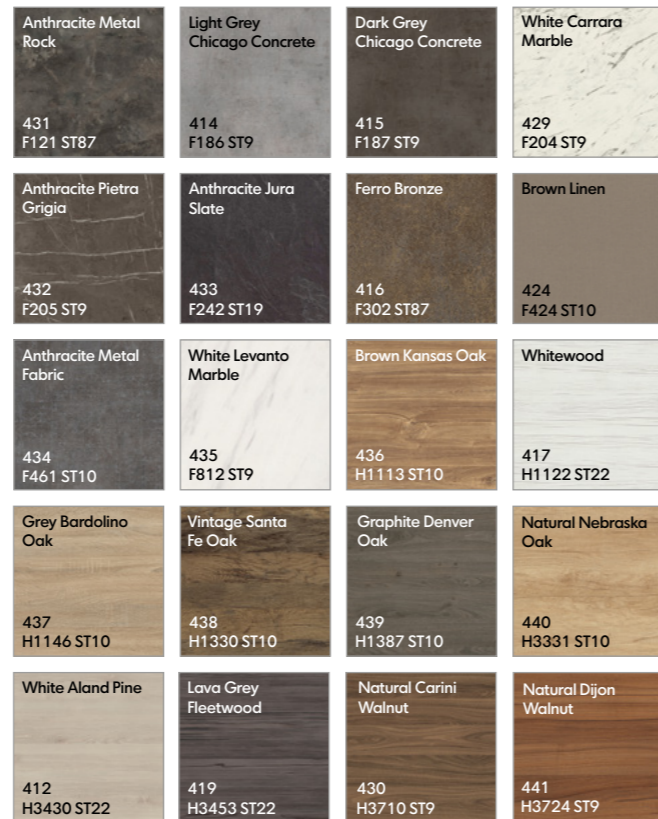
The images of the colors are similar but not binding.

Compact panel | color options

BASIC | two decor options (table-top, shelf, blind and chipboard)



OPTION | 20 decor options (table-top, shelf and chipboard)



Chipboard decor | color options

BASIC | 2 decor options



20 additional decor options (category OPTION)
All decor options available (see page 132)

melamine-faced chipboard, 0,7" decor similar to HPL

table-top material: compact panel, 0,4" (black core)



cupboard/ coffee station

BASIC | only 2 decor options | 1.5"



No other options for the rack color.

melamine-faced chipboard, 1,5" decor similar to HPL

table-top material: compact panel, 0,4" (black core)



rack

Plywood with HPL | color options

BASIC | two decor options

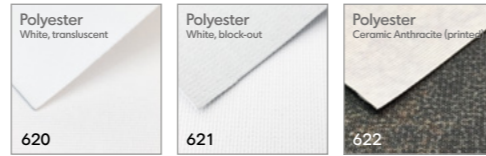


color-code



Polyester | color options

BASIC | three decor variations



cover on the back in polyester
example: polyester block-out, ceramic anthracite printed, VENTA-Code: 622



metal part in IGP-color
example: champagne, VENTA-Code: 101

The images of the colors are similar but not binding.

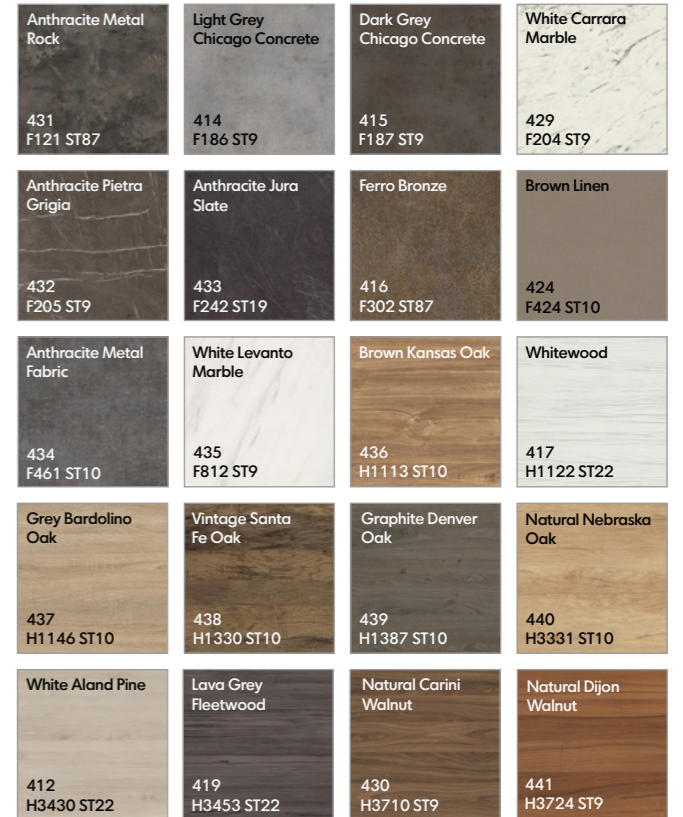
Compact panel | color options

BASIC | two decor options (blind)



The images of the colors are similar but not binding.

OPTION | 20 decor options (blinds)



ventadesign | 138

Worldwide | References

VENTA has designed exclusive furniture for the hotel, events and catering industry throughout the world. Our clients are based in a wide range of locations.

You can find all clients worldwide on our website:
www.ventadesign.com



North America | References



Exclusive Distributor for North America
 (United States, Canada and the Caribbean)



Client	City	Country
Calgary Marriott Downtown Hotel	Calgary	Canada
Delta Hotels Calgary Airport In-Terminal	Calgary	Canada
Holiday Inn Edmonton S - Ellerslie Road	Edmonton	Canada
JW Marriott Edmonton	Edmonton	Canada
Delta Hotels Bessborough	Saskatchewan	Canada
JW Marriott parq Vancouver	Vancouver	Canada
Circle at Paradisus Palma Real	Punta Cana	Dominican Republic
Iberostar Dominicana	Punta Cana	Dominican Republic
Iberostar Grand Hotel Bavaro	Punta Cana	Dominican Republic
Iberostar Rose Hall Beach	Montego Bay	Jamaica
Coral Level at Iberostar Selection Cancun	Cancún	Mexico
Iberostar Selection Cancún	Cancún	Mexico
Iberostar Grand Paraiso	Riviera Maya	Mexico
LondonHouse Chicago, C. Coll.by Hilton	Chicago, Illinois	USA
Cummins Inc.	Columbus, Indianapolis	USA
The Joule	Dallas	USA
The Ritz-Carlton, Naples	Naples, Florida	USA
InterContinental San Francisco	San Francisco	USA
The Ritz-Carlton, St. Thomas	St. Thomas, U.S. Virgin Islands	USA
Mandarin Oriental, Washington D.C.	Washington, D. C.	USA
The Ritz-Carlton, Washington, D.C.	Washington, D. C.	USA

Full Range Catalogs



Bauscher



Hepp



WMF



Playground



Luigi Bormioli



MyGlassStudio



ViDiVi



Dalebrook
Tableware



Dalebrook Buffet &
Retail Display



Dalebrook Omni



Senior Dining &
Care



Touch Free



Novelties Guide & More!
December 2020



BauscherHepp

6612 Fleetwood Drive • Suite 104 • Raleigh, NC 27612

888.840.4333 • info@bauscherhepp.com

www.bauscherhepp.com



[@bauscherheppusa](https://twitter.com/bauscherheppusa)



[@bauscherheppinc](https://facebook.com/bauscherheppinc)



[@bauscherheppusa](https://instagram.com/bauscherheppusa)



[BauscherHepp Inc.](https://linkedin.com/company/BauscherHepp)