



BauscherHepp



MyGlassStudio





### bento box dinner plates

intro .....	4
small square plate.....	10
small rectangular plate .....	12
small rectangular basket .....	14
large square plate .....	16
large square basket.....	18
large rectangular plate .....	20
large rectangular basket .....	22
long rectangular plate.....	24
large bento basket.....	26
service tray .....	30
accessories .....	32
buffet dinner plate servers.....	38

### modern lunch box

intro .....	48
small modern lunch box .....	52
medium modern lunch box .....	53
large modern lunch box .....	54
leather tiffin carrier.....	55

### cube cloche

intro .....	56
small cube cloche .....	60
small footed tray .....	61
medium cube cloche.....	62
medium footed tray .....	63
large cube cloche .....	64
large footed tray .....	65
rectangular cube cloche.....	66
rectangular footed tray.....	67



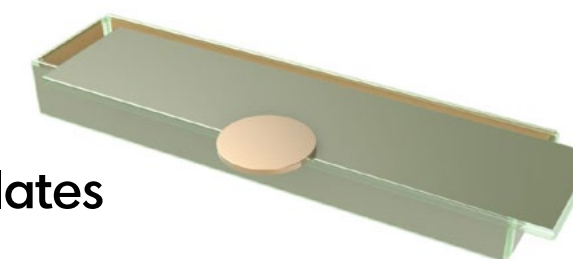


An all new touch-free dining solution

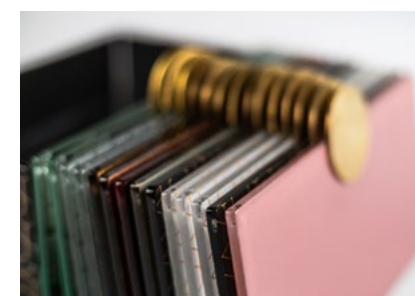


Made from ultra-hygienic, non-porous glass

## Bento Box Dinner Plates



- MyGlassStudio's innovative Bento Dinner Plates are a perfect solution to help restaurants and guests feel more secure dining out
- **Non-porous, ultra-hygienic glass** and matching lids protect food and provide peace of mind for guests
- **12 colors, 5 sizes, and a range of matching accessories** create endless opportunities to mix and match for **contactless dining out, in-room service, and touch-free buffet**
- Create Instagram-worthy moments for guests



Cover



Stack

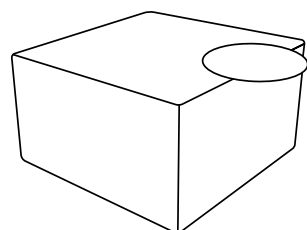


Serve

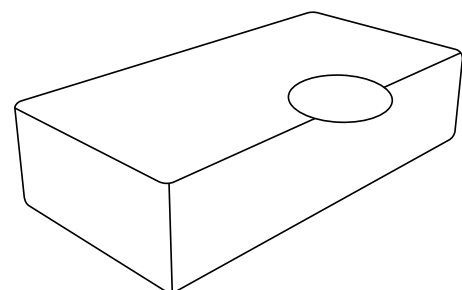




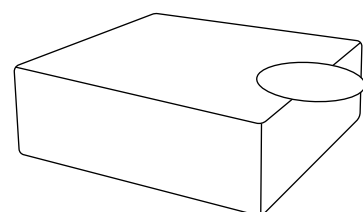
## 5 Sizes to Stack and Serve



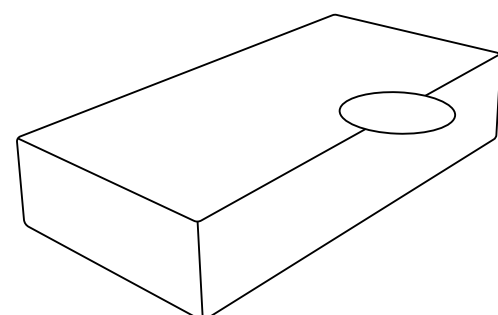
**Small Square Plate with Cover**  
**S5-S6-03**  
 4.3" x 4.3" x 2.6"  
 18.6 oz



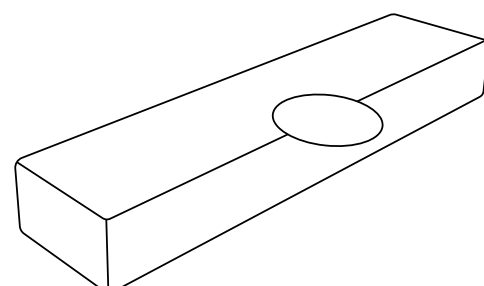
**Small Rectangular Plate with Cover**  
**S5-S6-04**  
 8.7" x 4.3" x 2.2"  
 32.0 oz



**Large Square Plate with Cover**  
**S5-S6-01**  
 5.5" x 5.5" x 2.2"  
 26.0 oz



**Large Rectangular Plate with Cover**  
**S5-S6-02**  
 11.0" x 5.5" x 2.4"  
 59.2 oz



**Long Rectangular Plate with Cover**  
**SC-17-16**  
 11.0" x 2.8" x 1.6"  
 16.2 oz





## 12 Colors to Mix & Match

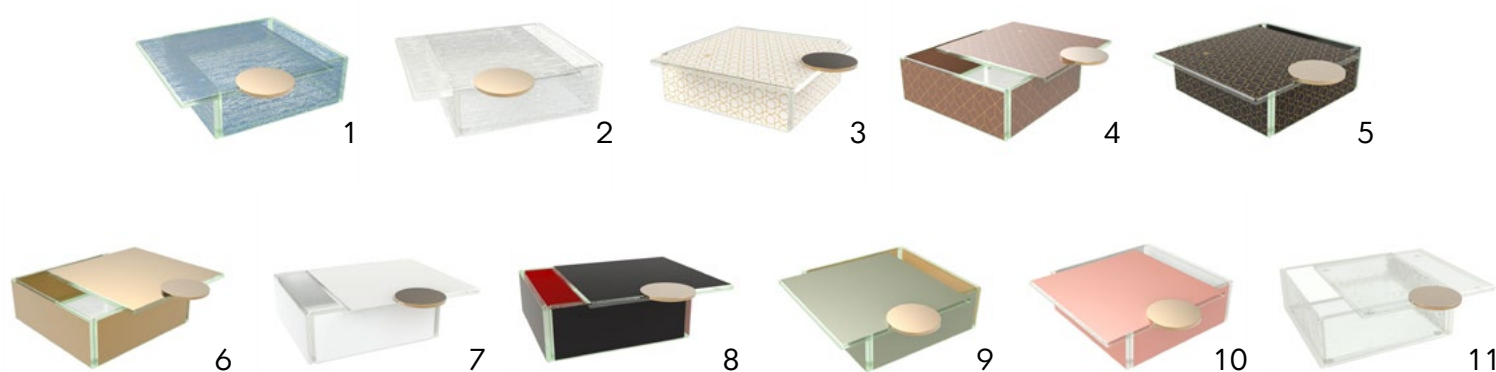


## Pantone's 2021 Colors of The Year



12. Ultimate Gray (with Illuminating Yellow interior): SS2730231

- This addition to our bento dinner plate collection was one of the first dinnerware product launches with Pantone's 2021 Colors of the Year
- The Bento Dinner Plate was redesigned for an aspirational and rocksolid New Year



### Patterns (Top)

1. Transparent Blue: CR123
2. Transparent White: CR422
3. White with Gold Art Deco Pattern: RHZ422021
4. Metallic Brown with Gold Art Deco Pattern: DMZ026021
5. Black with Gold Art Deco Pattern: RHZ43021

### Solids (Bottom)

6. Gold: SR21
7. White: SR422
8. Black (with Red interior): SS3843
9. Metallic Grey (with Gold interior): SS02910450
10. Metallic Pink (with White interior): SS4220370
11. Clear Transparent: X40

## Customization Options

- Choose from **200 color options** and a variety of patterns to bring your exact vision to life
- Contact your sales representative for more information



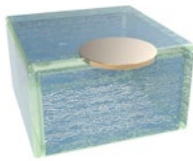


# Small Square Plate



Small Square Plate with Cover  
4.3" x 4.3" x 2.6"  
18.6 oz

The Small Square Plate is perfect to serve appetizers and sides such as soups, vegetables, salads, mashed potatoes and classic french fries. Due to its depth, you can present a bread bun to accompany a salad or a soup. The Small Square Plate is also ideal for serving desserts such as brownies, cookies, selection of ice cream or seasonal fruits. You can stack two square bentos next to each other on top of the rectangular one. In this way, you can present stir fried vegetables in the large one and have the rice and salad in the small square ones. For the bar lounge, it is great for snacks.



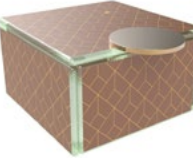
Transparent Blue  
Small Square Bento Side Plate  
Complete Kit S5-S6-03-CR123 8  
Plate P4-S6-05-CR123 4  
Cover S5-05-03-CR123 12



Transparent White  
Small Square Bento Side Plate  
Complete Kit S5-S6-03-CR422 8  
Plate P4-S6-05-CR422 4  
Cover S5-05-03-CR422 12



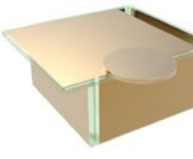
White with Gold Art Deco Pattern  
Small Square Bento Side Plate  
Complete Kit S5-S6-03-RHZ422021 8  
Plate P4-S6-05-RHZ422021 4  
Cover S5-05-03-RHZ422021 12



Metallic Brown with Gold Art Deco Pattern  
Small Square Bento Side Plate  
Complete Kit S5-S6-03-DMZ026021 8  
Plate P4-S6-05-DMZ026021 4  
Cover S5-05-03-DMZ026021 12



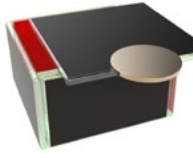
Black with Gold Art Deco Pattern  
Small Square Bento Side Plate  
Complete Kit S5-S6-03-RHZ43021 8  
Plate P4-S6-05-RHZ43021 4  
Cover S5-05-03-RHZ43021 12



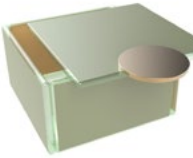
Gold Small Square Bento Side Plate  
Complete Kit S5-S6-03-SR21 8  
Plate P4-S6-05-SR21 4  
Cover S5-05-03-SR21 12



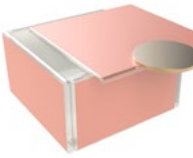
White Small Square Bento Side Plate  
Complete Kit S5-S6-03-SR422 8  
Plate P4-S6-05-SR422 4  
Cover S5-05-03-SR422 12



Black (with Red interior)  
Small Square Bento Side Plate  
Complete Kit S5-S6-03-SS3843 8  
Plate P4-S6-05-SS3843 4  
Cover S5-05-03-SS3843 12



Metallic Grey (with Gold interior)  
Small Square Bento Side Plate  
Complete Kit S5-S6-03-SS02910450 8  
Plate P4-S6-05-SS02910450 4  
Cover S5-05-03-SS02910450 12



Metallic Pink (with White interior)  
Small Square Bento Side Plate  
Complete Kit S5-S6-03-SS4220370 8  
Plate P4-S6-05-SS4220370 4  
Cover S5-05-03-SS4220370 12



Clear Transparent  
Small Square Bento Side Plate  
Complete Kit S5-S6-03-X40 8  
Plate P4-S6-05-X40 4  
Cover S5-05-03-X40 12

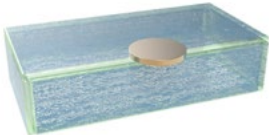


# Small Rectangular Plate



Small Rectangular Plate with Cover  
8.7" x 4.3" x 2.2"  
32.0 oz

The perfect size for a pasta portion, small club sandwich, veggie wraps or pad thai. Serve cavatelli or spaghetti and enclose the meal in a protected box for a "touchless" delivery. The Small Rectangular Plate is ideal for breakfast served in the room: tier two boxes (one with pancakes and one with eggs with bacon). In bars and lounges this is the perfect large appetizer plate to serve tempura and finger food in general. With its cover it also very useful as a lunch box for meeting rooms and board rooms for a light lunch.



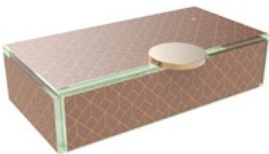
Transparent Blue  
Small Rectangular Plate  
Complete Kit S5-S6-04-CR123 6  
Plate RP-08-38-CR123 5  
Cover S5-05-04-CR123 12



Transparent White  
Small Rectangular Plate  
Complete Kit S5-S6-04-CR422 6  
Plate RP-08-38-CR422 5  
Cover S5-05-04-CR422 12



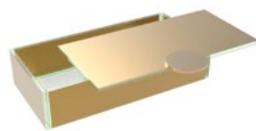
White with Gold Art Deco Pattern  
Small Rectangular Plate  
Complete Kit S5-S6-04-RHZ422021 6  
Plate RP-08-38-RHZ422021 5  
Cover S5-05-04-RHZ422021 12



Metallic Brown with Gold Art Deco Pattern  
Small Rectangular Plate  
Complete Kit S5-S6-04-DMZ026021 6  
Plate RP-08-38-DMZ026021 5  
Cover S5-05-04-DMZ026021 12



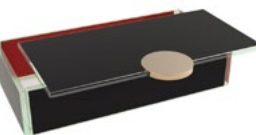
Black with Gold Art Deco Pattern  
Small Rectangular Plate  
Complete Kit S5-S6-04-RHZ43021 6  
Plate RP-08-38-RHZ43021 5  
Cover S5-05-04-RHZ43021 12



Gold Small Rectangular Plate  
Complete Kit S5-S6-04-SR21 6  
Plate RP-08-38-SR21 5  
Cover S5-05-04-SR21 12



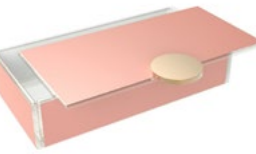
White Small Rectangular Plate  
Complete Kit S5-S6-04-SR422 6  
Plate RP-08-38-SR422 5  
Cover S5-05-04-SR422 12



Black (with Red interior)  
Small Rectangular Plate  
Complete Kit S5-S6-04-SS3843 6  
Plate RP-08-38-SS3843 5  
Cover S5-05-04-SS3843 12



Metallic Grey (with Gold interior)  
Small Rectangular Plate  
Complete Kit S5-S6-04-SS02910450 6  
Plate RP-08-38-SS02910450 5  
Cover S5-05-04-SS02910450 12



Metallic Pink (with White interior)  
Small Rectangular Plate  
Complete Kit S5-S6-04-SS4220370 6  
Plate RP-08-38-SS4220370 5  
Cover S5-05-04-SS4220370 12



Clear Transparent  
Small Rectangular Plate  
Complete Kit S5-S6-04-X40 6  
Plate RP-08-38-X40 5  
Cover S5-05-04-X40 12



Small Rectangular Basket



Small Rectangular Basket  
8.6" x 4.3" x 8.0"  
96.0 oz

The Small Rectangular Basket is made up of 3 tiered Small Rectangular Plates (RP-08-38), 1 Small Rectangular Cover (S5-05-04), and Small Rectangular Basket Handle (RP-90-45). An excellent solution for bar food and function rooms, in-room dining, small events and coffee breaks. You can serve main courses, finger foods, appetizers and desserts. Along with the small rectangular dinner plate, you can also tier 2 small square dinner plates if you want to serve small side dishes or a soup.



Transparent Blue  
Small Rectangular Basket with Pearl Grey Handle

Complete Kit	SC-18-10-CR123-PE	2	♡
Plate (x3)	RP-08-38-CR123	5	♡
Cover (x1)	S5-05-04-CR123	12	♡
Basket Handle (x1)	RP-90-45-PE	1	♡



Transparent White  
Small Rectangular Basket with White Handle

Complete Kit	SC-18-10-CR422-W	2	
Plate (x3)	RP-08-38-CR422	5	
Cover (x1)	S5-05-04-CR422	12	
Basket Handle (x1)	RP-90-45-W	1	



White with Gold Art Deco Pattern  
Small Rectangular Basket with Gold Handle

Complete Kit	SC-18-10-RHZ422021-G	2	♡
Plate (x3)	RP-08-38-RHZ422021	5	♡
Cover (x1)	S5-05-04-RHZ422021	12	♡
Basket Handle (x1)	RP-90-45-G	1	♡



Metallic Brown with Gold Art Deco Pattern  
Small Rectangular Basket with Gold Handle

Complete Kit	SC-18-10-DMZ026021-G	2	
Plate (x3)	RP-08-38-DMZ026021	5	
Cover (x1)	S5-05-04-DMZ026021	12	
Basket Handle (x1)	RP-90-45-G	1	♡



Black with Gold Art Deco Pattern  
Small Rectangular Basket with Black Handle

Complete Kit	SC-18-10-RHZ43021-BK	2	♡
Plate (x3)	RP-08-38-RHZ43021	5	♡
Cover (x1)	S5-05-04-RHZ43021	12	♡
Basket Handle (x1)	RP-90-45-BK	1	♡



Gold Small Rectangular Basket  
with Gold Handle

Complete Kit	SC-18-10-SR21-G	2	
Plate (x3)	RP-08-38-SR21	5	
Cover (x1)	S5-05-04-SR21	12	
Basket Handle (x1)	RP-90-45-G	1	♡



White Small Rectangular Basket  
with White Handle

Complete Kit	SC-18-10-SR422-W	2	
Plate (x3)	RP-08-38-SR422	5	
Cover (x1)	S5-05-04-SR422	12	
Basket Handle (x1)	RP-90-45-W	1	



Black (with Red interior)  
Small Rectangular Basket with Black Handle

Complete Kit	SC-18-10-SS3843-BK	2	
Plate (x3)	RP-08-38-SS3843	5	
Cover (x1)	S5-05-04-SS3843	12	
Basket Handle (x1)	RP-90-45-BK	1	♡



Metallic Grey (with Gold interior)  
Small Rectangular Basket with Pearl Grey Handle

Complete Kit	SC-18-10-SS02910450-PE	2	♡
Plate (x3)	RP-08-38-SS02910450	5	♡
Cover (x1)	S5-05-04-SS02910450	12	♡
Basket Handle (x1)	RP-90-45-PE	1	♡



Metallic Pink (with White interior)  
Small Rectangular Basket with White Handle

Complete Kit	SC-18-10-SS4220370-W	2	
Plate (x3)	RP-08-38-SS4220370	5	
Cover (x1)	S5-05-04-SS4220370	12	
Basket Handle (x1)	RP-90-45-W	1	



Clear Transparent  
Small Rectangular Basket with Pearl Grey Handle

Complete Kit	SC-18-10-X40-PE	2	♡
Plate (x3)	RP-08-38-X40	5	♡
Cover (x1)	S5-05-04-X40	12	♡
Basket Handle (x1)	RP-90-45-PE	1	♡

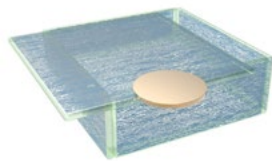


# Large Square Plate



Large Square Plate with Cover  
5.5" x 5.5" x 2.2"  
26.0 oz

The Large Square Plate can be used to serve small salads, risotto, starters, desserts, soups, and sides in a plate that will protect the meal, without compromising the eating experience. Actually it enhances it! As a welcome amenity, surprise your guests with a delicious food service solution, protected by the matching cover. It is also the perfect size for kids' meals such as pasta.



Transparent Blue  
Large Square Plate  
Complete Kit S5-S6-01-CR123 3  
Plate RP-08-71-CR123 3  
Cover S5-05-05-CR123 12



Transparent White  
Large Square Plate  
Complete Kit S5-S6-01-CR422 3  
Plate RP-08-71-CR422 3  
Cover S5-05-05-CR422 12



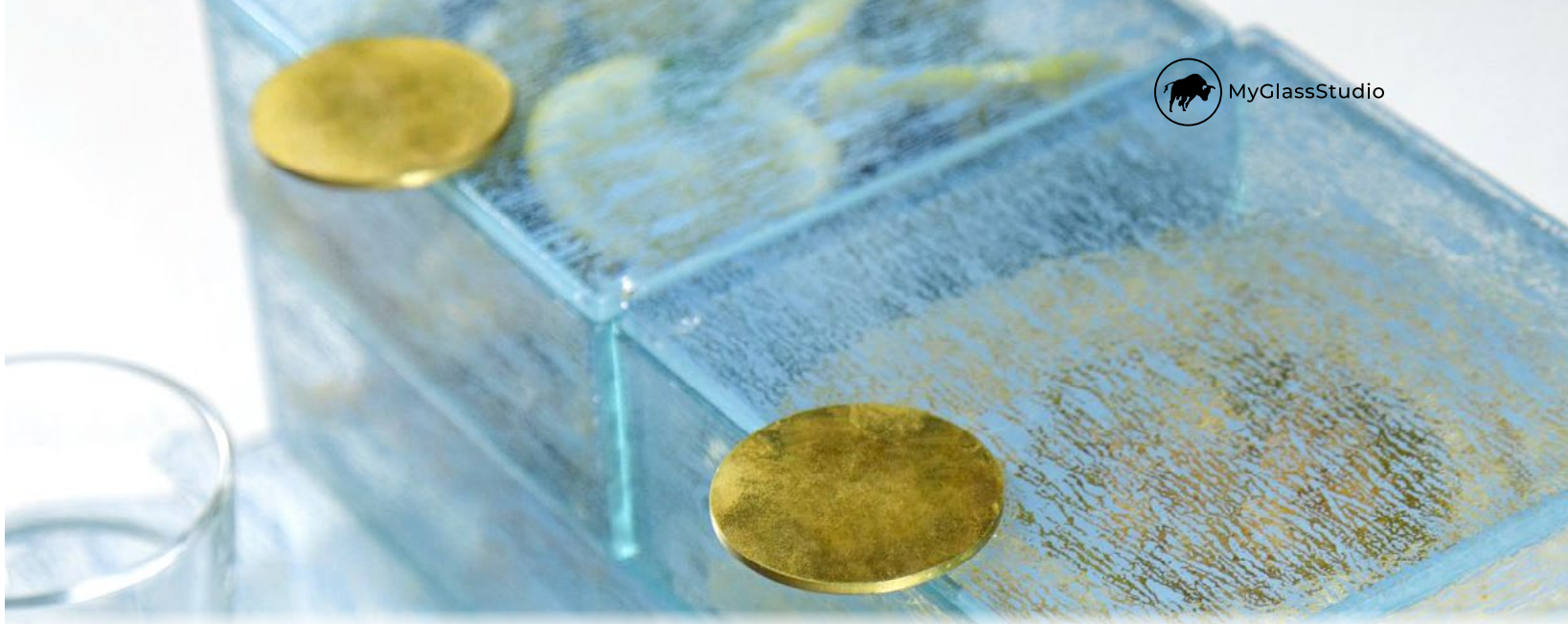
White with Gold Art Deco Pattern  
Large Square Plate  
Complete Kit S5-S6-01-RHZ422021 3  
Plate RP-08-71-RHZ422021 3  
Cover S5-05-05-RHZ422021 12



Metallic Brown with Gold Art Deco Pattern  
Large Square Plate  
Complete Kit S5-S6-01-DMZ026021 3  
Plate RP-08-71-DMZ026021 3  
Cover S5-05-05-DMZ026021 12



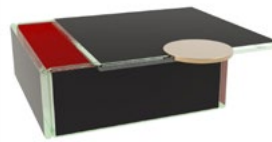
Black with Gold Art Deco Pattern  
Large Square Plate  
Complete Kit S5-S6-01-RHZ43021 3  
Plate RP-08-71-RHZ43021 3  
Cover S5-05-05-RHZ43021 12



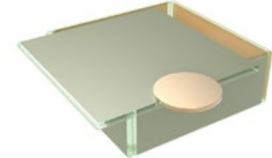
Gold Large Square Plate  
Complete Kit S5-S6-01-SR21 3  
Plate RP-08-71-SR21 3  
Cover S5-05-05-SR21 12



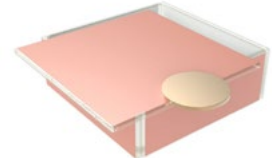
White Large Square Plate  
Complete Kit S5-S6-01-SR422 3  
Plate RP-08-71-SR422 3  
Cover S5-05-05-SR422 12



Black (with Red interior)  
Large Square Plate  
Complete Kit S5-S6-01-SS3843 3  
Plate RP-08-71-SS3843 3  
Cover S5-05-05-SS3843 12



Metallic Grey (with Gold interior)  
Large Square Plate  
Complete Kit S5-S6-01-SS02910450 3  
Plate RP-08-71-SS02910450 3  
Cover S5-05-05-SS02910450 12



Metallic Pink (with White interior)  
Large Square Plate  
Complete Kit S5-S6-01-SS4220370 3  
Plate RP-08-71-SS4220370 3  
Cover S5-05-05-SS4220370 12



Clear Transparent  
Large Square Plate  
Complete Kit S5-S6-01-X40 3  
Plate RP-08-71-X40 3  
Cover S5-05-05-X40 12



## Large Square Basket



### Large Square Basket

5.5" x 5.5" x 8.0"

78.0 oz

The Large Square Basket consists of 3 Large Square Plates (RP-08-71), 1 Large Square Cover (S5-05-05), and 1 Large Square Basket Holder (RP-90-43). It is the perfect way to serve light, in-room dining lunches or appetizers, as a room amenity "bowl" for cheese, sliced fruit and pastry amenities. It can also be used as a covered high tea stand for the tea lounge, for bar food and finger food in the bar, for appetizers in the restaurant, as well as for small events and meetings as a lunch bag.



### Transparent Blue Large Square Basket with Pearl Grey Handle

Complete Kit	SC-18-07-CR123-PE	②	♡
Plate (x3)	RP-08-71-CR123	③	♡
Cover (x1)	S5-05-05-CR123	⑫	♡
Basket Handle (x1)	RP-90-43-PE	①	♡



### Transparent White Large Square Basket with White Handle

Complete Kit	SC-18-07-CR422-W	②	
Plate (x3)	RP-08-71-CR422	③	
Cover (x1)	S5-05-05-CR422	⑫	
Basket Handle (x1)	RP-90-43-W	①	



### White with Gold Art Deco Pattern Large Square Basket with Gold Handle

Complete Kit	SC-18-07-RHZ422021-G	②	♡
Plate (x3)	RP-08-71-RHZ422021	③	♡
Cover (x1)	S5-05-05-RHZ422021	⑫	♡
Basket Handle (x1)	RP-90-43-G	①	♡



### Metallic Brown with Gold Art Deco Pattern Large Square Basket with Gold Handle

Complete Kit	SC-18-07-DMZ026021-G	②	
Plate (x3)	RP-08-71-DMZ026021	③	
Cover (x1)	S5-05-05-DMZ026021	⑫	
Basket Handle (x1)	RP-90-43-G	①	♡



### Black with Gold Art Deco Pattern Large Square Basket with Black Handle

Complete Kit	SC-18-07-RHZ43021-BK	②	♡
Plate (x3)	RP-08-71-RHZ43021	③	♡
Cover (x1)	S5-05-05-RHZ43021	⑫	♡
Basket Handle (x1)	RP-90-43-BK	①	♡



### Gold Large Square Basket with Gold Handle

Complete Kit	SC-18-07-SR21-G	②	
Plate (x3)	RP-08-71-SR21	③	
Cover (x1)	S5-05-05-SR21	⑫	
Basket Handle (x1)	RP-90-43-G	①	♡



### White Large Square Basket with White Handle

Complete Kit	SC-18-07-SR422-W	②	
Plate (x3)	RP-08-71-SR422	③	
Cover (x1)	S5-05-05-SR422	⑫	
Basket Handle (x1)	RP-90-43-W	①	



### Black (with Red interior) Large Square Basket with Black Handle

Complete Kit	SC-18-07-SS3843-BK	②	
Plate (x3)	RP-08-71-SS3843	③	
Cover (x1)	S5-05-05-SS3843	⑫	
Basket Handle (x1)	RP-90-43-BK	①	♡



### Metallic Grey (with Gold interior) Large Square Basket with Pearl Grey Handle

Complete Kit	SC-18-07-SS02910450-PE	②	♡
Plate (x3)	RP-08-71-SS02910450	③	♡
Cover (x1)	S5-05-05-SS02910450	⑫	♡
Basket Handle (x1)	RP-90-43-PE	①	♡



### Metallic Pink (with White interior) Large Square Basket with White Handle

Complete Kit	SC-18-07-SS4220370-W	②	
Plate (x3)	RP-08-71-SS4220370	③	
Cover (x1)	S5-05-05-SS4220370	⑫	
Basket Handle (x1)	RP-90-43-W	①	



### Clear Transparent Large Square Basket with Pearl Grey Handle

Complete Kit	SC-18-07-X40-PE	②	♡
Plate (x3)	RP-08-71-X40	③	♡
Cover (x1)	S5-05-05-X40	⑫	♡
Basket Handle (x1)	RP-90-43-PE	①	♡

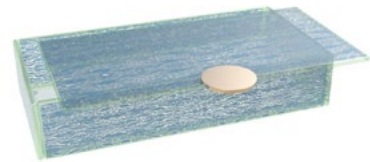


Large Rectangular Plate



Large Rectangular Plate  
11" x 5.5" x 2.4"  
59.2 oz

The size and depth of the plate is perfect to serve main dishes such as prime steak, fish fillet, Caesar salad, chicken roast, club sandwich, kebab, fish 'n' chips or an open faced burger. The large rectangular dinner plate is large enough to fit side greens, chips, or potatoes as well. Easy to cut steak, it will protect the meal and keep it warm from kitchen to table.



Transparent Blue  
Large Rectangular Plate  
Complete Kit S5-S6-02-CR123 (4) ♥  
Plate P4-S6-05-CR123 (4) ♥  
Cover S5-05-02-CR123 (12) ♥



Transparent White  
Large Rectangular Plate  
Complete Kit S5-S6-02-CR422 (4)  
Plate P4-S6-05-CR422 (4)  
Cover S5-05-02-CR422 (12)



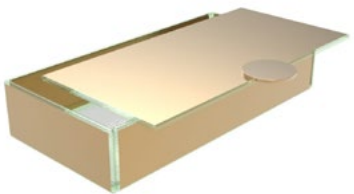
White with Gold Art Deco Pattern  
Large Rectangular Plate  
Complete Kit S5-S6-02-RHZ422021 (4) ♥  
Plate P4-S6-05-RHZ422021 (4) ♥  
Cover S5-05-02-RHZ422021 (12) ♥



Metallic Brown with Gold Art Deco Pattern  
Large Rectangular Plate  
Complete Kit S5-S6-02-DMZ026021 (4)  
Plate P4-S6-05-DMZ026021 (4)  
Cover S5-05-02-DMZ026021 (12)



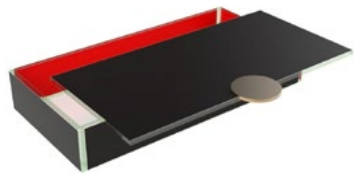
Black with Gold Art Deco Pattern  
Large Rectangular Plate  
Complete Kit S5-S6-02-RHZ43021 (4) ♥  
Plate P4-S6-05-RHZ43021 (4) ♥  
Cover S5-05-02-RHZ43021 (12) ♥



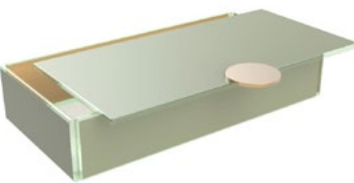
Gold Large Rectangular Plate  
Complete Kit S5-S6-02-SR21 (4)  
Plate P4-S6-05-SR21 (4)  
Cover S5-05-02-SR21 (12)



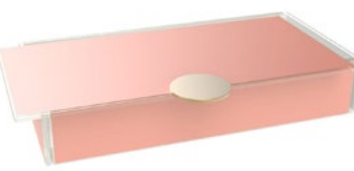
White Large Rectangular Plate  
Complete Kit S5-S6-02-SR422 (4)  
Plate P4-S6-05-SR422 (4)  
Cover S5-05-02-SR422 (12)



Black (with Red interior)  
Large Rectangular Plate  
Complete Kit S5-S6-02-SS3843 (4)  
Plate P4-S6-05-SS3843 (4)  
Cover S5-05-02-SS3843 (12)



Metallic Grey (with Gold interior)  
Large Rectangular Plate  
Complete Kit S5-S6-02-SS02910450 (4) ♥  
Plate P4-S6-05-SS02910450 (4) ♥  
Cover S5-S6-05-SS02910450 (12) ♥



Metallic Pink (with White interior)  
Large Rectangular Plate  
Complete Kit S5-S6-02-SS4220370 (4)  
Plate P4-S6-05-SS4220370 (4)  
Cover S5-S6-05-SS4220370 (12)



Clear Transparent  
Large Rectangular Plate  
Complete Kit S5-S6-02-X40 (4) ♥  
Plate P4-S6-05-X40 (4) ♥  
Cover S5-05-02-X40 (12) ♥



LargeTabletop Caddy



Large Tabletop Caddy  
11" x 5.5" x 8.0"  
59.0 oz

Use the Large Rectangular Plate with cover (S5-S6-02) and the metal handle of the Large Basket (RP-90-44) to present a unique tabletop caddy. Caddy can accomodate a bread basket, 2 or 4 cutlery cases, or sanitizing materials if needed. Stack up to 3 high.



Transparent Blue  
Large Tabletop Caddy with Pearl Grey Handle  
Complete Kit SC-18-12-CR123 ②♥  
Plate P2-S6-07-CR123 ④♥  
Cover S5-05-02-CR123 ⑫♥  
Basket Handle RP-90-44-PE ①♥



Transparent White  
Large Tabletop Caddy with White Handle  
Complete Kit SC-18-12-CR422 ②♥  
Plate P2-S6-07-CR422 ④♥  
Cover S5-05-02-CR422 ⑫♥  
Basket Handle RP-90-44-W ①♥



White with Gold Art Deco Pattern  
Large Tabletop Caddy with Gold Handle  
Complete Kit SC-18-12-RHZ422021 ②♥  
Plate P2-S6-07-RHZ422021 ④♥  
Cover S5-05-02-RHZ422021 ⑫♥  
Basket Handle RP-90-44-G ①♥



Metallic Brown with Gold Art Deco Pattern  
Large Tabletop Caddy with Gold Handle  
Complete Kit SC-18-12-DMZ026021 ②♥  
Plate P2-S6-07-DMZ026021 ④♥  
Cover S5-05-02-DMZ026021 ⑫♥  
Basket Handle RP-90-44-G ①♥



Black with Gold Art Deco Pattern  
Large Tabletop Caddy with Black Handle  
Complete Kit SC-18-12-RHZ43021 ②♥  
Plate P2-S6-07-RHZ43021 ④♥  
Cover S5-05-02-RHZ43021 ⑫♥  
Basket Handle RP-90-44-BK ①♥



Gold Large Tabletop Caddy with Gold Handle  
Complete Kit SC-18-12-SR21 ②♥  
Plate P2-S6-07-SR21 ④♥  
Cover S5-05-02-SR21 ⑫♥  
Basket Handle RP-90-44-G ①♥



White Large Tabletop Caddy with White Handle  
Complete Kit SC-18-12-SR422 ②♥  
Plate P2-S6-07-SR422 ④♥  
Cover S5-05-02-SR422 ⑫♥  
Basket Handle RP-90-44-W ①♥



Black (with Red interior)  
Large Tabletop Caddy with Black Handle  
Complete Kit SC-18-12-SS3843 ②♥  
Plate P2-S6-07-SS3843 ④♥  
Cover S5-05-02-SS3843 ⑫♥  
Basket Handle RP-90-44-BK ①♥



Metallic Grey (with Gold interior)  
Large Tabletop Caddy with Pearl Grey Handle  
Complete Kit SC-18-12-SS02910450 ②♥  
Plate P2-S6-07-SS02910450 ④♥  
Cover S5-05-02-SS02910450 ⑫♥  
Basket Handle RP-90-44-PE ①♥



Metallic Pink (with White interior)  
Large Tabletop Caddy with White Handle  
Complete Kit SC-18-12-SS4220370 ②♥  
Plate P2-S6-07-SS4220370 ④♥  
Cover S5-05-02-SS4220370 ⑫♥  
Basket Handle RP-90-44-W ①♥



Clear Transparent  
Large Tabletop Caddy with Pearl Grey Handle  
Complete Kit SC-18-12-X40 ②♥  
Plate P2-S6-07-X40 ④♥  
Cover S5-05-02-X40 ⑫♥  
Basket Handle RP-90-44-PE ①♥

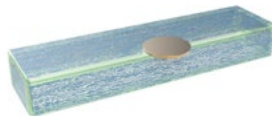


# Long Rectangular Plate

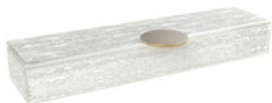


Long Rectangular Plate with Cover  
11.0" x 2.8" x 1.6"  
16.2 oz

This versatile appetizer plate is great for small bites or appetizers and can be stacked on top of the Large Rectangular Plate (S5-S6-02). This plate is also useful as a cutlery case and a dipping bowl tray. As a cutlery case, it is a unique decorative object for the table setting, but at the same time it provides the perception of "cleanliness and sanitation" as well as the sense of a "personal" rather than a communal cutlery set. Operationally, restaurants can reduce costs since cutlery case presets can be ready in the service station and tables can be turned faster. Finally, it is great as a passing or canape tray for canapes in cocktail parties and receptions.



Transparent Blue  
Long Rectangular Plate  
Complete Kit SC-17-16-CR123 (8) ♥  
Plate SC-17-17-CR123 (8) ♥  
Cover S5-05-07-CR123 (12) ♥



Transparent White  
Long Rectangular Plate  
Complete Kit SC-17-16-CR422 (8)  
Plate SC-17-17-CR422 (8)  
Cover S5-05-07-CR422 (12)



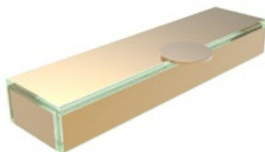
White with Gold Art Deco Pattern  
Long Rectangular Plate  
Complete Kit SC-17-16-RHZ422021 (8) ♥  
Plate SC-17-17-RHZ422021 (8) ♥  
Cover S5-05-07-RHZ422021 (12) ♥



Metallic Brown with Gold Art Deco Pattern  
Long Rectangular Plate  
Complete Kit SC-17-16-DMZ026021 (8)  
Plate SC-17-17-DMZ026021 (8)  
Cover S5-05-07-DMZ026021 (12)



Black with Gold Art Deco Pattern  
Long Rectangular Plate  
Complete Kit SC-17-16-RHZ43021 (8) ♥  
Plate SC-17-17-RHZ43021 (8) ♥  
Cover S5-05-07-RHZ43021 (12) ♥



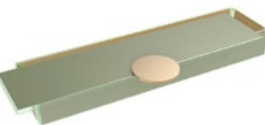
Gold Long Rectangular Plate  
Complete Kit SC-17-16-SR21 (8)  
Plate SC-17-17-SR21 (8)  
Cover S5-05-07-SR21 (12)



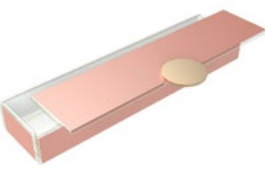
White Long Rectangular Plate  
Complete Kit SC-17-16-SR422 (8)  
Plate SC-17-17-SR422 (8)  
Cover S5-05-07-SR422 (12)



Black Long Rectangular Plate  
Complete Kit SC-17-16-SS3843 (8)  
Plate SC-17-17-SS3843 (8)  
Cover S5-05-07-SS3843 (12)



Metallic Grey  
Long Rectangular Plate  
Complete Kit SC-17-16-SS02910450 (8) ♥  
Plate SC-17-17-SS02910450 (8) ♥  
Cover S5-05-07-SS02910450 (12) ♥



Metallic Pink  
Long Rectangular Plate  
Complete Kit SC-17-16-SS4220370 (8)  
Plate SC-17-17-SS4220370 (8)  
Cover S5-05-07-SS4220370 (12)



Clear Transparent  
Long Rectangular Plate  
Complete Kit SC-17-16-X40 (8) ♥  
Plate SC-17-17-X40 (8) ♥  
Cover S5-05-07-X40 (12) ♥



Large Bento Basket



Large Bento Basket  
11" x 5.5" x 8.0"  
144.0 oz

The Large Bento Basket consists of 1 Large Rectangular Plate (P2-S6-07), 2 Large Square Plates ( RP-08-71), 2 Long Rectangular Plates (SC-17-17), and 2 Long Rectangular Covers (S5-05-07). This “picnic” basket is great for in-room dining as well as for delivery with buggies in resort villas. Basket holds the Large Rectangular Plate which can hold the main course. In the Large Square Plates you can have the appetizer, salad, dessert, or side dishes. The Long Rectangular Plates can be used in a variety of ways: the first as a condiment tray (by adding the square condiment bowls) and the second as the cutlery case (optionally, along with napkin holder, salt and pepper holder and cutlery rest).



Transparent Blue  
Large Bento Basket with Pearl Grey Handle

Complete Kit	SC-18-08-CR123-PE	② ♡
Large Rectangular Plate (x1)	P2-S6-07-CR123	④ ♡
Large Square Plate (x2)	RP-08-71-CR123	③ ♡
Long Rectangular Plate (x2)	SC-17-17-CR123	⑧ ♡
Long Rectangular Plate Cover (x2)	S5-05-07-CR123	⑫ ♡
Basket Handle (x1)	RP-90-44-PE	① ♡



Transparent White  
Large Bento Basket with White Handle

Complete Kit	SC-18-08-CR422-W	②
Large Rectangular Plate (x1)	P2-S6-07-CR422	④
Large Square Plate (x2)	RP-08-71-CR422	③
Long Rectangular Plate (x2)	SC-17-17-CR422	⑧
Long Rectangular Plate Cover (x2)	S5-05-07-CR422	⑫
Basket Handle (x1)	RP-90-44-W	①



White with Gold Art Deco Pattern  
Large Bento Basket with Gold Handle

Complete Kit	SC-18-08-RHZ422021-G	② ♡
Large Rectangular Plate (x1)	P2-S6-07-RHZ422021	④ ♡
Large Square Plate (x2)	RP-08-71-RHZ422021	③ ♡
Long Rectangular Plate (x2)	SC-17-17-RHZ422021	⑧ ♡
Long Rectangular Plate Cover (x2)	S5-05-07-RHZ422021	⑫ ♡
Basket Handle (x1)	RP-90-44-G	① ♡



Metallic Brown with Gold Art Deco Pattern  
Large Bento Basket with Gold Handle

Complete Kit	SC-18-08-DMZ026021-G	② ♡
Large Rectangular Plate (x1)	P2-S6-07-DMZ026021	④ ♡
Large Square Plate (x2)	RP-08-71-DMZ026021	③ ♡
Long Rectangular Plate (x2)	SC-17-17-DMZ026021	⑧ ♡
Long Rectangular Plate Cover (x2)	S5-05-07-DMZ026021	⑫ ♡
Basket Handle (x1)	RP-90-44-G	① ♡



Black with Gold Art Deco Pattern  
Large Bento Basket with Black Handle

Complete Kit	SC-18-08-RHZ43021-BK	② ♡
Large Rectangular Plate (x1)	P2-S6-07-RHZ43021	④ ♡
Large Square Plate (x2)	RP-08-71-RHZ43021	③ ♡
Long Rectangular Plate (x2)	SC-17-17-RHZ43021	⑧ ♡
Long Rectangular Plate Cover (x2)	S5-05-07-RHZ43021	⑫ ♡
Basket Handle (x1)	RP-90-44-BK	① ♡





A full course in one delivery: the Large Bento Basket can be placed outside the guest's room on a folding butler tray and work as a "knock and drop" delivery.



<b>Gold Large Bento Basket with Gold Handle</b>	
Complete Kit	SC-18-08-SR21-G (2)
Large Rectangular Plate (x1)	P2-S6-07-SR21 (4)
Large Square Plate (x2)	RP-08-71-SR21 (3)
Long Rectangular Plate (x2)	SC-17-17-SR21 (8)
Long Rectangular Plate Cover (x2)	S5-05-07-SR21 (12)
Basket Handle (x1)	RP-90-44-G (1) ♥



<b>White Large Bento Basket with White Handle</b>	
Complete Kit	SC-18-08-SR422-W (2)
Large Rectangular Plate (x1)	P2-S6-07-SR422 (4)
Large Square Plate (x2)	RP-08-71-SR422 (3)
Long Rectangular Plate (x2)	SC-17-17-SR422 (8)
Long Rectangular Plate Cover (x2)	S5-05-07-SR422 (12)
Basket Handle (x1)	RP-90-44-W (1)



<b>Black (with Red interior) Large Bento Basket with Black Handle</b>	
Complete Kit	SC-18-08-SS3843-BK (2)
Large Rectangular Plate (x1)	P2-S6-07-SS3843 (4)
Large Square Plate (x2)	RP-08-71-SS3843 (3)
Long Rectangular Plate (x2)	SC-17-17-SS3843 (8)
Long Rectangular Plate Cover (x2)	S5-05-07-SS3843 (12)
Basket Handle (x1)	RP-90-44-BK (1) ♥



<b>Metallic Grey (with Gold interior) Large Bento Basket with Pearl Grey Handle</b>	
Complete Kit	SC-18-08-SS02910450-PE (2) ♥
Large Rectangular Plate (x1)	P2-S6-07-SS02910450 (4) ♥
Large Square Plate (x2)	RP-08-71-SS02910450 (3) ♥
Long Rectangular Plate (x2)	SC-17-17-SS02910450 (8) ♥
Long Rectangular Plate Cover (x2)	S5-05-07-SS02910450 (12) ♥
Basket Handle (x1)	RP-90-44-PE (1) ♥



<b>Metallic Pink (with White interior) Large Bento Basket with White Handle</b>	
Complete Kit	SC-18-08-SS4220370-W (2)
Large Rectangular Plate (x1)	P2-S6-07-SS4220370 (4)
Large Square Plate (x2)	RP-08-71-SS4220370 (3)
Long Rectangular Plate (x2)	SC-17-17-SS4220370 (8)
Long Rectangular Plate Cover (x2)	S5-05-07-SS4220370 (12)
Basket Handle (x1)	RP-90-44-W (1)



<b>Clear Transparent Large Bento Basket with Pearl Grey Handle</b>	
Complete Kit	SC-18-08-X40-PE (2) ♥
Large Rectangular Plate (x1)	P2-S6-07-X40 (4) ♥
Large Square Plate (x2)	RP-08-71-X40 (3) ♥
Long Rectangular Plate (x2)	SC-17-17-X40 (8) ♥
Long Rectangular Plate Cover (x2)	S5-05-07-X40 (12) ♥
Basket Handle (x1)	RP-90-44-PE (1) ♥





# Service Tray / Placemat / Charger Plate



Service Tray  
12" x 12" x 0.8"  
⑥

A tray for use in restaurants or banquets on which the dishes can be served one by one on a single tray or charger, thus replacing the placemat. The tray grants versatility in the bento dinner plate layout, allowing the use of dinner plates from both the small and the large pair to be combined.



Transparent Blue  
Service Tray  
S1-F3-41-CR123



Transparent White  
Service Tray  
S1-F3-41-CR422



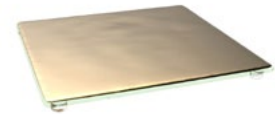
White with Gold Art Deco Pattern  
Service Tray  
S1-F3-41-RHZ422021



Metallic Brown with Gold Art Deco Pattern  
Service Tray  
S1-F3-41-DMZ026021



Black with Gold Art Deco Pattern  
Service Tray  
S1-F3-41-RHZ43021



Gold Service Tray  
S1-F3-41-SR21



Transparent Service Tray  
S1-F3-41-X40



Black Service Tray  
S1-F3-41-SR43 ♡



## Bento Box Accessories



## Cover Holder



**Cover Holder**  
1.8" x 0.6"  
20

Use the cover holder to safely place and hold the lid of the bento dinner plates for a lux and safe presentation.



**Black Cover Holder**  
SC-18-13-BK



**Gold Cover Holder**  
SC-18-13-G



**White Cover Holder**  
SC-18-13-W

## Napkin Ring



**Napkin Ring**  
2.4" x 1.0" x 1.2"  
8

A napkin ring with 2 round handmade glass beads and metal ring. Envelope napkin, cutlery set or chopsticks as well as the salt tasting spoon and offer them together inside the cutlery case.



**Black Napkin Ring**  
SC-00-10-X40-BK



**Gold Napkin Ring**  
SC-00-10-X40-G



**White Napkin Ring**  
SC-00-10-X40-W



Cutlery / Chopstick Rests



Cutlery / Chopstick Rests  
2.4" x 1.0" x 0.4"  
(32)

A chopstick or cutlery rest for fine dining table setting. It can be placed inside the cutlery case along with the napkin ring, cutlery set and napkin.

Condiment Bowls and  
Condiment Spoons

Condiment Bowls  
2.4" x 2.4" x 0.8"  
1.0 oz  
(6)

Condiment Spoons  
2.4" x 0.7" x 0.3"  
(24)

You can place 4 mini condiment bowls along with their individual condiment spoons inside the Long Rectangular Dinner Plate, transforming it into a dipping bowl set.



Black Chopstick / Cutlery Rest  
SC-17-13-SR43



Brown Chopstick / Cutlery Rest  
SC-17-13-SR026



Gold Chopstick / Cutlery Rest  
SC-17-13-SR21



Grey Chopstick / Cutlery Rest  
SC-17-13-SR0450



White Chopstick / Cutlery Rest  
SC-17-13-SR422



Transparent  
Chopstick / Cutlery Rest  
SC-17-13-X40



Black Condiment  
Bowl  
B5-S4-04-SR43



Brown Condiment  
Bowl  
B5-S4-04-SR026



Gold Condiment  
Bowl  
B5-S4-04-SR21



Grey Condiment  
Bowl  
B5-S4-04-SR0450



White Condiment  
Bowl  
B5-S4-04-SR422



Transparent  
Condiment Bowl  
B5-S4-04-X40



Black Condiment  
Spoon  
SC-01-13-BL



Copper Condiment  
Spoon  
SC-01-13-CP



Gold Condiment  
Spoon  
SC-01-13-GS



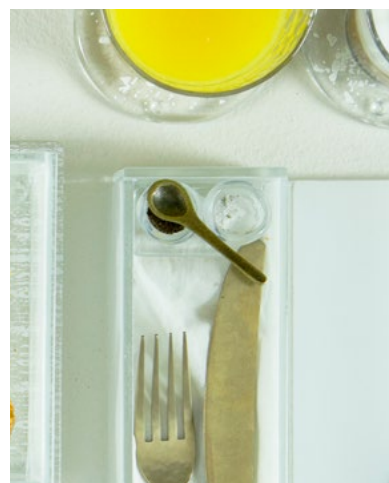
Bronze Condiment  
Spoon  
SC-01-13-BG



Silver Condiment  
Spoon  
SC-01-13-SS



## Salt & Pepper Holder with Salt Spoon



**Salt & Pepper Holder with Salt Spoon**  
2.3" x 1.2" x 0.7"  
⑥

The Salt & Pepper Holder comes with a Salt Spoon and can be placed inside the Long Rectangular Plate. You might also want to add a napkin ring and a pair of cutlery rests to create a proper personal cutlery case.



**Black Salt & Pepper Holder with Salt Spoon**  
SC-04-07-SR43-BL ♡



**Brown Salt & Pepper Holder with Salt Spoon**  
SC-04-07-SR026-BG



**Gold Salt & Pepper Holder with Salt Spoon**  
SC-04-07-SR21-GS ♡



**White Salt & Pepper Holder with Salt Spoon**  
SC-04-07-SR422-SS ♡



**Transparent Salt & Pepper Holder with Salt Spoon**  
SC-04-07-X40-SS ♡

## Wine Glass Holder



**Wine Glass Holder**  
2.7" x 2.7" x 1.5"  
②

Easily carry both food and wine in one hand by attaching the Wine Glass Holder to the side of the Long Rectangular Dinner Plate. A convenient solution for cocktail parties and receptions.



**Black Wine Holder**  
SC-07-11-BK



**Gold Wine Holder**  
SC-07-11-G ♡



**White Wine Holder**  
SC-07-11-W

## Plate Dividers



**Large Plate Divider**  
11.0" x 5.0" x 1.6"  
⑥

Large Plate Divider for the Large Rectangular Plate (S5-S6-02) to divide the plate in 6 parts. Turn the Large Rectangular Plate into a Japanese bento box using the inox metal divider. It can also be used for spa or room amenities for chocolates or petit fours and at the bar for canapes and finger food.



**Black Large Plate Divider**  
RP-90-46-BK



**Gold Large Plate Divider**  
RP-90-46-G



**White Large Plate Divider**  
RP-90-46-W



**Small Plate Divider**  
5.0" x 2.3" x 1.6"  
①⑥

Small Plate Divider for the Large Rectangular Plate (S5-S6-02), to divide the plate in 3 parts, a larger area and two small areas. Can also be used with the Large Square Plate (S5-S6-01), to either divide the plate in 3 parts or in 4 parts by using 2 dividers back-to-back.



**Black Small Plate Divider**  
RP-90-48-BK



**Gold Small Plate Divider**  
RP-90-48-G

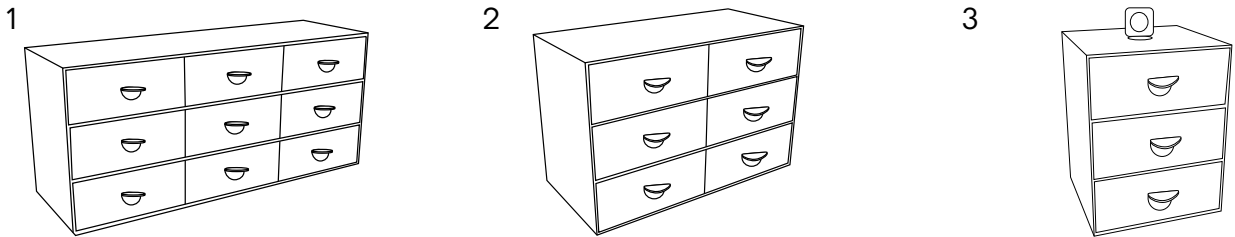


**White Small Plate Divider**  
RP-90-48-W



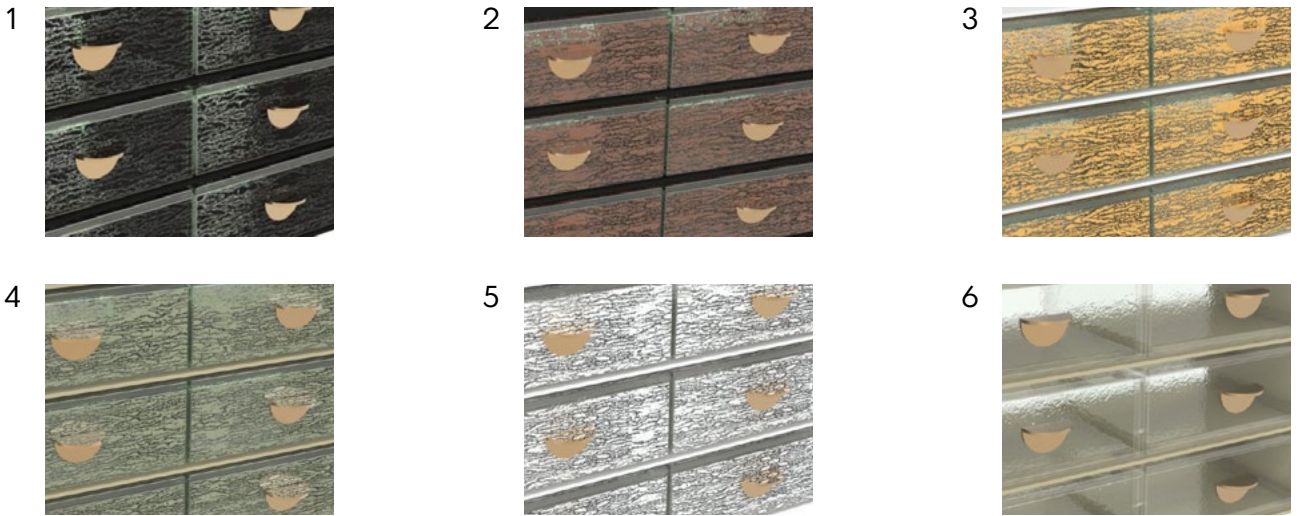


# Buffet Dinner Plate Servers



## Sizes

1. 9-Part: F2-16-09
2. 6-Part: F2-16-10
3. 3-Part: F2-16-08



## Drawer Colors

1. Crackled Black: CR43
2. Crackled Brown: CR026
3. Crackled Gold: CR021
4. Crackled Grey: CR0450
5. Crackled White: CR422
6. Transparent: X40



## Server Colors

1. Black: BK
2. White: W
3. Pearl Grey: PE



9-Part Buffet Dinner Plate Server



9-Part Buffet Dinner Plate Server  
17.1" x 5.5" x 7.7"

Buffet Dinner Plate Server with 9 Bento Lunch Box Drawers with handles and covers for individual portions for the post-COVID world. Two or more Buffet Servers can be stacked one on top of the other. Buffet Server can be refilled from the back (both sides are open) and guests can retrieve from the front. Buffet Server can be placed back to back and guests can retrieve from both sides. A solution for executive lounges, coffee breaks and small events



9-Part Crackled Black Buffet Dinner Plate Server			
Complete Kit	F2-16-09-CR43-BK	(2)	♥
Plate (x9)	RP-08-74-CR43	(8)	♥
Cover (x9)	S5-05-06-CR43	(24)	♥
Server Frame	F2-15-04-BK	(1)	♥



9-Part Crackled Brown Buffet Dinner Plate Server			
Complete Kit	F2-16-09-CR026-BK	(2)	
Plate	RP-08-74-CR026	(8)	
Cover (x9)	S5-05-06-CR026	(24)	
Server Frame	F2-15-04-BK	(1)	♥



9-Part Crackled Gold Buffet Dinner Plate Server			
Complete Kit	F2-16-09-CR021-W	(2)	
Plate	RP-08-74-CR021	(8)	
Cover (x9)	S5-05-06-CR021	(24)	
Server Frame	F2-15-04-W	(1)	



9-Part Crackled Grey Buffet Dinner Plate Server			
Complete Kit	F2-16-09-CR0450-PE	(2)	♥
Plate	RP-08-74-CR0450	(8)	♥
Cover (x9)	S5-05-06-CR0450	(24)	♥
Server Frame	F2-15-04-PE	(1)	♥



9-Part Crackled White Buffet Dinner Plate Server			
Complete Kit	F2-16-09-CR422-W	(2)	
Plate	RP-08-74-CR422	(8)	
Cover (x9)	S5-05-06-CR422	(24)	
Server Frame	F2-15-04-W	(1)	



9-Part Transparent Buffet Dinner Plate Server			
Complete Kit	F2-16-09-X40-PE	(2)	♥
Plate	RP-08-74-X40	(8)	♥
Cover (x9)	S5-05-06-X40	(24)	♥
Server Frame	F2-15-04-PE	(1)	♥



6-Part Buffet Dinner Plate Server



6-Part Buffet Dinner Plate Server  
11.3" x 5.5" x 7.7"

Buffet bento server with 6 bento lunch box drawers with handles and covers for individual portions. Two or more bento servers can be stacked one on top of the other. Bento server can be refilled from the back (both sides are open) and guests can retrieve from the front. Bento servers can be placed back to back and guests can retrieve from both sides. A solution for room amenities, executive lounges, coffee breaks and small events.



6-Part Crackled Black Buffet Dinner Plate Server			
Complete Kit	F2-16-10-CR43-BK	(2)	♥
Plate (x6)	RP-08-74-CR43	(4)	♥
Cover (x6)	S5-05-06-CR43	(12)	♥
Server Frame	F2-15-05-BK	(1)	♥



6-Part Crackled Brown Buffet Dinner Plate Server			
Complete Kit	F2-16-10-CR026-BK	(2)	
Plate (x6)	RP-08-74-CR026	(4)	
Cover (x6)	S5-05-06-CR026	(12)	
Server Frame	F2-15-05-BK	(1)	♥



6-Part Crackled Gold Buffet Dinner Plate Server			
Complete Kit	F2-16-10-CR021-W	(2)	
Plate (x6)	RP-08-74-CR021	(4)	
Cover (x6)	S5-05-06-CR021	(12)	
Server Frame	F2-15-05-W	(1)	



6-Part Crackled Grey Buffet Dinner Plate Server			
Complete Kit	F2-16-10-CR0450-PE	(2)	♥
Plate (x6)	RP-08-74-CR0450	(4)	♥
Cover (x6)	S5-05-06-CR0450	(12)	♥
Server Frame	F2-15-05-PE	(1)	♥



6-Part Crackled White Buffet Dinner Plate Server			
Complete Kit	F2-16-10-CR422-W	(2)	
Plate (x6)	RP-08-74-CR422	(4)	
Cover (x6)	S5-05-06-CR422	(12)	
Server Frame	F2-15-05-W	(1)	



6-Part Transparent Buffet Dinner Plate Server			
Complete Kit	F2-16-10-X40-PE	(2)	♥
Plate (x6)	RP-08-74-X40	(4)	♥
Cover (x6)	S5-05-06-X40	(12)	♥
Server Frame	F2-15-05-PE	(1)	♥



3-Part Buffet Dinner Plate Server



3-Part Buffet Dinner Plate Server  
5.6" x 5.5" x 7.7"

The 3-part bento server can be used as an afternoon tea bento box for lounges or even for VIP amenities in hotel to place petit fours, chocolates and fruits. The 3 part high tea box comes with a handle to carry and 3 bento lunch box drawers with handles and covers for individual portions.



3-Part Crackled Black Buffet Dinner Plate Server			
Complete Kit	F2-16-08-CR43-BK	(3)	♥
Plate (x6)	RP-08-74-CR43	(4)	♥
Cover (x6)	S5-05-06-CR43	(12)	♥
Server Frame	F2-15-06-BK	(3)	♥



3-Part Crackled Brown Buffet Dinner Plate Server			
Complete Kit	F2-16-08-CR026-BK	(3)	
Plate (x6)	RP-08-74-CR026	(4)	
Cover (x6)	S5-05-06-CR026	(12)	
Server Frame	F2-15-06-BK	(3)	♥



3-Part Crackled Gold Buffet Dinner Plate Server			
Complete Kit	F2-16-08-CR021-W	(3)	
Plate (x6)	RP-08-74-CR021	(4)	
Cover (x6)	S5-05-06-CR021	(12)	
Server Frame	F2-15-06-W	(3)	



3-Part Crackled Grey Buffet Dinner Plate Server			
Complete Kit	F2-16-08-CR0450-PE	(3)	♥
Plate (x6)	RP-08-74-CR0450	(4)	♥
Cover (x6)	S5-05-06-CR0450	(12)	♥
Server Frame	F2-15-06-PE	(3)	♥



3-Part Crackled White Buffet Dinner Plate Server			
Complete Kit	F2-16-08-CR422-W	(3)	
Plate (x6)	RP-08-74-CR422	(4)	
Cover (x6)	S5-05-06-CR422	(12)	
Server Frame	F2-15-06-W	(3)	



3-Part Transparent Buffet Dinner Plate Server			
Complete Kit	F2-16-08-X40-PE	(3)	♥
Plate (x6)	RP-08-74-X40	(4)	♥
Cover (x6)	S5-05-06-X40	(12)	♥
Server Frame	F2-15-06-PE	(3)	♥



## Buffet Food Labels for Server



### Buffet Food Labels for Server

1.8" x 1.0"

⑩

Coffee break buffet food labels for the 3, 6 and 9-Part Bento Server. Keep Milk, Coffee, Decaf, Tea and Sugar in individual portions inside the bento server drawers. Includes 1 of each label.



Buffet Food Labels  
F2-01-00-G







## Modern Lunch Box



- The word "lunch box" evokes images of a child's cafeteria, but the Modern Lunch Box couldn't be further from that idea
- The **sustainable, non-plastic solution** for eco-conscious bars, restaurants, and hotels
- Colorful lids keep germs out and act as a flat plate for a dual-purpose solution
- Addition of Black Elastic Strap keeps lids even more **secure during transport** and provides peace of mind for guests



Secure



Transport

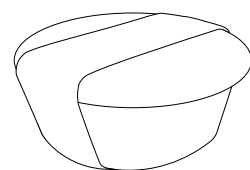


Reveal

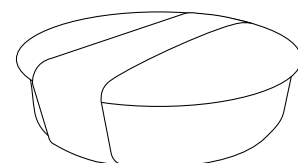




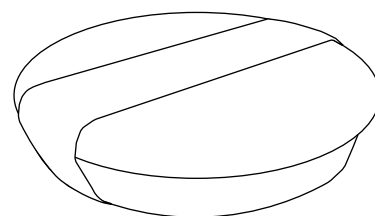
## 3 Versatile Sizes



**Small Modern Lunch Box**  
**S5-C2-05**  
 4.3" dia. x 2.2"  
 8.1 oz



**Medium Modern Lunch Box**  
**S5-C2-07**  
 6.0" dia. x 1.8"  
 18.6 oz



**Large Modern Lunch Box**  
**S5-C2-03**  
 7.7" dia. x 2.0"  
 23.7 oz



## 5 Stunning Colors



### Lid Colors

1. Grey: SR0232
2. Pink: SR0370
3. Leather Brown: SR281
4. Mint: SR0450
5. Cream: SR412





# Small Modern Lunch Box



## Small Modern Lunch Box

4.3" dia. x 2.2"  
8.1 oz

The Small Modern Lunch Box design with elastic band is perfect to serve amuse soups or desserts, such as ice cream or brownies. This set of bowl with cover includes a deep side dish plate in white and a colored cover wrapped with an elastic black band. It can be used in the bar as an olive dish or nut bowl or in the buffet as a tasting plate with lid. The lid can be used as a flat plate or mini appetizer plate.



## Small Grey Modern Lunch Box

Complete Kit	S5-C2-05-SR0232	8	♥
Bowl	B5-C2-22-SR422	8	♥
Lid	P4-C2-04-SR0232	16	♥
Elastic Band	S5-C2-06	1	♥



## Small Pink Modern Lunch Box

Complete Kit	S5-C2-05-SR0370	8	♥
Bowl	B5-C2-22-SR422	8	♥
Lid	P4-C2-04-SR0370	16	♥
Elastic Band	S5-C2-06	1	♥



## Small Leather Brown Modern Lunch Box

Complete Kit	S5-C2-05-SR281	8	♥
Bowl	B5-C2-22-SR422	8	♥
Lid	P4-C2-04-SR281	16	♥
Elastic Band	S5-C2-06	1	♥



## Small Mint Modern Lunch Box

Complete Kit	S5-C2-05-SR0450	8	♥
Bowl	B5-C2-22-SR422	8	♥
Lid	P4-C2-04-SR0450	16	♥
Elastic Band	S5-C2-06	1	♥



## Small Cream Modern Lunch Box

Complete Kit	S5-C2-05-SR412	8	♥
Bowl	B5-C2-22-SR422	8	♥
Lid	P4-C2-04-SR412	16	♥
Elastic Band	S5-C2-06	1	♥

# Medium Modern Lunch Box



## Medium Modern Lunch Box

6.0" dia. x 1.8"  
18.6 oz

The Medium Modern Lunch Box design with elastic band is ideal to serve desserts, small appetizers and side dishes such as a portion of rice or french fries. The covered plate set includes a deep plate in white and a colored cover wrapped with an elastic black band. The plate cover can also be used as side plate to the main meal



## Medium Grey Modern Lunch Box

Complete Kit	S5-C2-07-SR0232	4	♥
Bowl	B1-C2-22-SR422	4	♥
Lid	P4-C2-05-SR0232	12	♥
Elastic Band	S5-C2-08	1	♥



## Medium Pink Modern Lunch Box

Complete Kit	S5-C2-07-SR0370	4	♥
Bowl	B1-C2-22-SR422	4	♥
Lid	P4-C2-05-SR0370	12	♥
Elastic Band	S5-C2-08	1	♥



## Medium Leather Brown Modern Lunch Box

Complete Kit	S5-C2-07-SR281	4	♥
Bowl	B1-C2-22-SR422	4	♥
Lid	P4-C2-05-SR281	12	♥
Elastic Band	S5-C2-08	1	♥



## Medium Mint Modern Lunch Box

Complete Kit	S5-C2-07-SR0450	4	♥
Bowl	B1-C2-22-SR422	4	♥
Lid	P4-C2-05-SR0450	12	♥
Elastic Band	S5-C2-08	1	♥



## Medium Cream Modern Lunch Box

Complete Kit	S5-C2-07-SR412	4	♥
Bowl	B1-C2-22-SR422	4	♥
Lid	P4-C2-05-SR412	12	♥
Elastic Band	S5-C2-06	1	♥



## Large Modern Lunch Box



**Large Modern Lunch Box**  
7.7" dia. x 2.0"  
23.7 oz

Serve pasta, chicken wings, veggie wraps and Pad Thai in the Large Modern Lunch Box. Combine the deep plate in white with a colored cover wrapped with an elastic black band. A covered lunchbox design that will protect the meal, without compromising the dining experience! Actually it enhances it! The plate cover is also a great appetizer plate for prawns or summer rolls.



Large Grey Modern Lunch Box		
Complete Kit	S5-C2-03-SR0232	③ ♥
Bowl	B2-C2-22-SR422	④ ♥
Lid	P3-C2-01-SR0232	⑩ ♥
Elastic Band	S5-C2-04	① ♥



Large Pink Modern Lunch Box		
Complete Kit	S5-C2-03-SR0370	③ ♥
Bowl	B2-C2-22-SR422	④ ♥
Lid	P3-C2-01-SR0370	⑩ ♥
Elastic Band	S5-C2-04	① ♥



Large Leather Brown Modern Lunch Box		
Complete Kit	S5-C2-03-SR281	③ ♥
Bowl	B2-C2-22-SR422	④ ♥
Lid	P3-C2-01-SR281	⑩ ♥
Elastic Band	S5-C2-04	① ♥



Large Mint Modern Lunch Box		
Complete Kit	S5-C2-03-SR0450	③ ♥
Bowl	B2-C2-22-SR422	④ ♥
Lid	P3-C2-01-SR0450	⑩ ♥
Elastic Band	S5-C2-04	① ♥



Large Cream Modern Lunch Box		
Complete Kit	S5-C2-03-SR412	③ ♥
Bowl	B2-C2-22-SR422	④ ♥
Lid	P3-C2-01-SR412	⑩ ♥
Elastic Band	S5-C2-04	① ♥

## Leather Tiffin Carrier



**Leather Tiffin Carrier**  
7.9" x 4.7" x 13.4"  
①

The Tiffin Carrier is made of black leather. It can be used for 2 or 3 Large Lunchboxes (code S5-C2-03) tiered together with their cover. Deliver the meal in a unique way to resort villas as a “knock and drop” or as a picnic basket to guests for their day out at the beach. It is also a great solution for bars and lounges to deliver small appetizers, finger food, snacks, or even afternoon tea service.



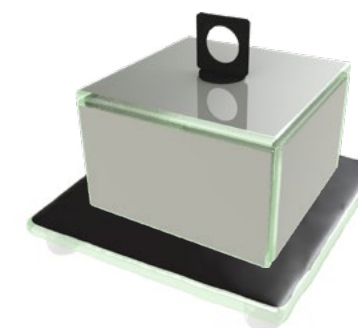
**Leather Tiffin Carrier**  
RP-90-47-LBK ♥



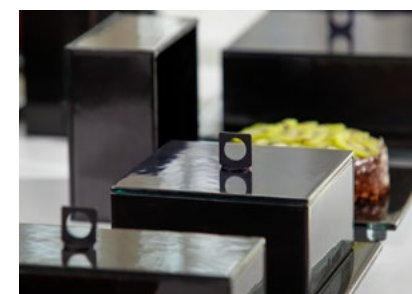




## Cube Cloche



- Compared to traditional room service metal covers which are associated with "old style" hospitality service, the Cube Cloche is infused with a modern Art Deco design sensibility.
- A truly modern and foodstagrammable, **alternative to the "service under the bell" experience.**
- Set up a sophisticated display and be assured that there will be no noise when lifting or placing down the food cloche. All **cloches and trays** are equipped with anti-slip bumpers.



Banquet



In-Room

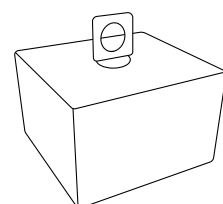


Tabletop

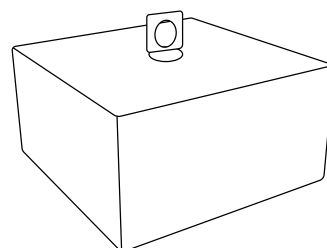




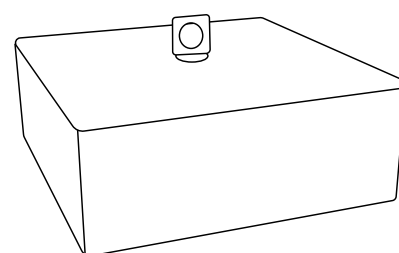
## 4 Sizes and Neutral Colors



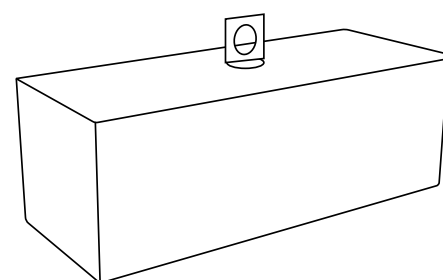
**Small Cube Cloche**  
**S5-S6-06**  
4.3" x 4.3" x 4.0"



**Medium Cube Cloche**  
**S5-S6-07**  
6.9" x 6.9" x 4.7"



**Large Cube Cloche**  
**S5-S6-08**  
9.0" x 9.0" x 4.7"



**Rectangular Cube Cloche**  
**S5-S6-09**  
11.0" x 4.3" x 5.0"



4



2



3



1

1. Transparent: X40
2. Silver: SR0231
3. Gold: SR0291
4. Black: SR43

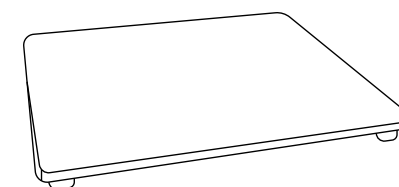
## Coordinated Footed Trays in Bold Hues



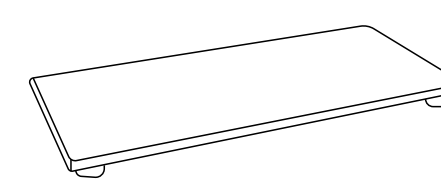
**Small Footed Tray**  
**S2-F3-08**  
5.9" x 5.9" x 0.9"



**Medium Footed Tray**  
**S1-F3-90**  
8.7" x 8.7" x 0.8"



**Large Footed Tray**  
**S1-F3-41**  
11.8" x 11.8" x 0.8"



**Rectangular Footed Tray**  
**S1-F3-89**  
11.0" x 4.3" x 5.0"



1



2



3



4

1. Black: SR43
2. Green: SR570
3. Orange: SR27
4. Pink: SR33





## Small Cube Cloche & Small Footed Tray



**Small Cube Cloche**

4.3" x 4.3" x 4.0"

④

The small square glass cake dome is ideal to cover hotel welcome amenities and turndown amenities in the guest room of the hotel. The cube cloche is also great for dessert presentations for fine dining experience and pastry display. The food cloches come with a black metal handle that is suitable for outdoor use.



**Small Transparent Cube Cloche**

S5-S6-06-X40-BK ♡



**Small Silver Cube Cloche**

S5-S6-06-SR0231-BK



**Small Gold Cube Cloche**

S5-S6-06-SR0291-BK



**Small Black Cube Cloche**

S5-S6-06-SR43-BK



**Small Footed Tray**

5.9" x 5.9" x 0.9"

⑧



**Small Black Footed Tray**

S2-F3-08-SR43 ♡



**Small Green Footed Tray**

S2-F3-08-SR570



**Small Orange Footed Tray**

S2-F3-08-SR27



**Small Pink Footed Tray**

S2-F3-08-SR33



# Medium Cube Cloche & Medium Footed Tray



Medium Cube Cloche

6.9" x 6.9" x 4.7"

④

The medium square cube cloche can be used for hotel welcome amenities, such as a cheese selection or fruits. The medium bento cover is also ideal for fine dining dessert presentation in the restaurant or as a glass cake dome at the dessert section of the buffet.



Medium Footed Tray

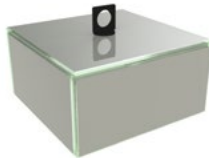
8.7" x 8.7" x 0.8"

⑥



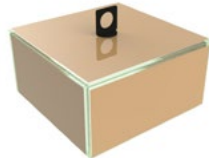
Medium Transparent Cube Cloche

S5-S6-07-X40-BK



Medium Silver Cube Cloche

S5-S6-07-SR0231-BK



Medium Gold Cube Cloche

S5-S6-07-SR0291-BK



Medium Black Cube Cloche

S5-S6-07-SR43-BK



Medium Black Footed Tray

S1-F3-90-SR43



Medium Green Footed Tray

S1-F3-90-SR570



Medium Orange Footed Tray

S1-F3-90-SR27



Medium Pink Footed Tray

S1-F3-90-SR33



# Large Cube Cloche & Large Footed Tray



**Large Cube Cloche**  
9.0" x 9.0" x 4.7"  
④

The large square cube cake dome has the ideal dimensions for a large cake. Made primary for the dessert section of the buffet, however it can also be used to cover hotel welcome amenities, such as cheeses and fruits or present your VIP amenities or even in a fine dining restaurant for dessert presentation.



**Large Footed Tray**  
11.8" x 11.8" x 0.8"  
⑥



**Large Transparent Cube Cloche**  
S5-S6-08-X40-BK ♡



**Large Silver Cube Cloche**  
S5-S6-08-SR0231-BK



**Large Gold Cube Cloche**  
S5-S6-08-SR0291-BK



**Large Black Cube Cloche**  
S5-S6-08-SR43-BK



**Large Black Footed Tray**  
S1-F3-41-SR43 ♡



**Large Green Footed Tray**  
S1-F3-41-SR570



**Large Orange Footed Tray**  
S1-F3-41-SR27



**Large Pink Footed Tray**  
S1-F3-41-SR33



# Rectangular Cloche & Rectangular Footed Tray



**Rectangular Cloche**  
 11.0" x 4.3" x 5.0"  
 ③

The rectangular cube dome is ideal for dessert and cake presentation for the buffet. It is very easy to use in the buffet as it can be stacked on its side. It can also be used in the room to cover hotel welcome amenities, such as desserts or a cheese platter with fruits.



**Rectangular Tray**  
 12.3" x 5.9" x 0.8"  
 ⑥



**Rectangular Transparent Cloche**  
 S5-S6-09-X40-BK ♡

**Rectangular Silver Cloche**  
 S5-S6-09-SR0231-BK

**Rectangular Gold Cloche**  
 S5-S6-09-SR0291-BK

**Rectangular Black Cloche**  
 S5-S6-09-SR43-BK



**Rectangular Black Footed Tray**  
 S1-F3-89-SR43 ♡

**Rectangular Green Footed Tray**  
 S1-F3-89-SR570

**Rectangular Orange Footed Tray**  
 S1-F3-89-SR27

**Rectangular Pink Footed Tray**  
 S1-F3-89-SR33



## Full Range Catalogs



Bauscher



Hepp



WMF



Playground



Studio Raw  
Customized



Studio Raw  
Premium



Luigi Bormioli



ViDiVi



Dalebrook  
Tableware



Dalebrook Buffet &  
Retail Display



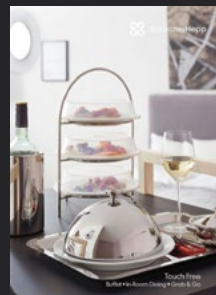
Dalebrook Omni



VENTA



Senior Dining &  
Care



Touch Free



Novelties  
Guide



# BauscherHepp

6612 Fleetwood Drive • Suite 104 • Raleigh, NC 27612

888.840.4333 • [info@bauscherhepp.com](mailto:info@bauscherhepp.com)

[www.bauscherhepp.com](http://www.bauscherhepp.com)

