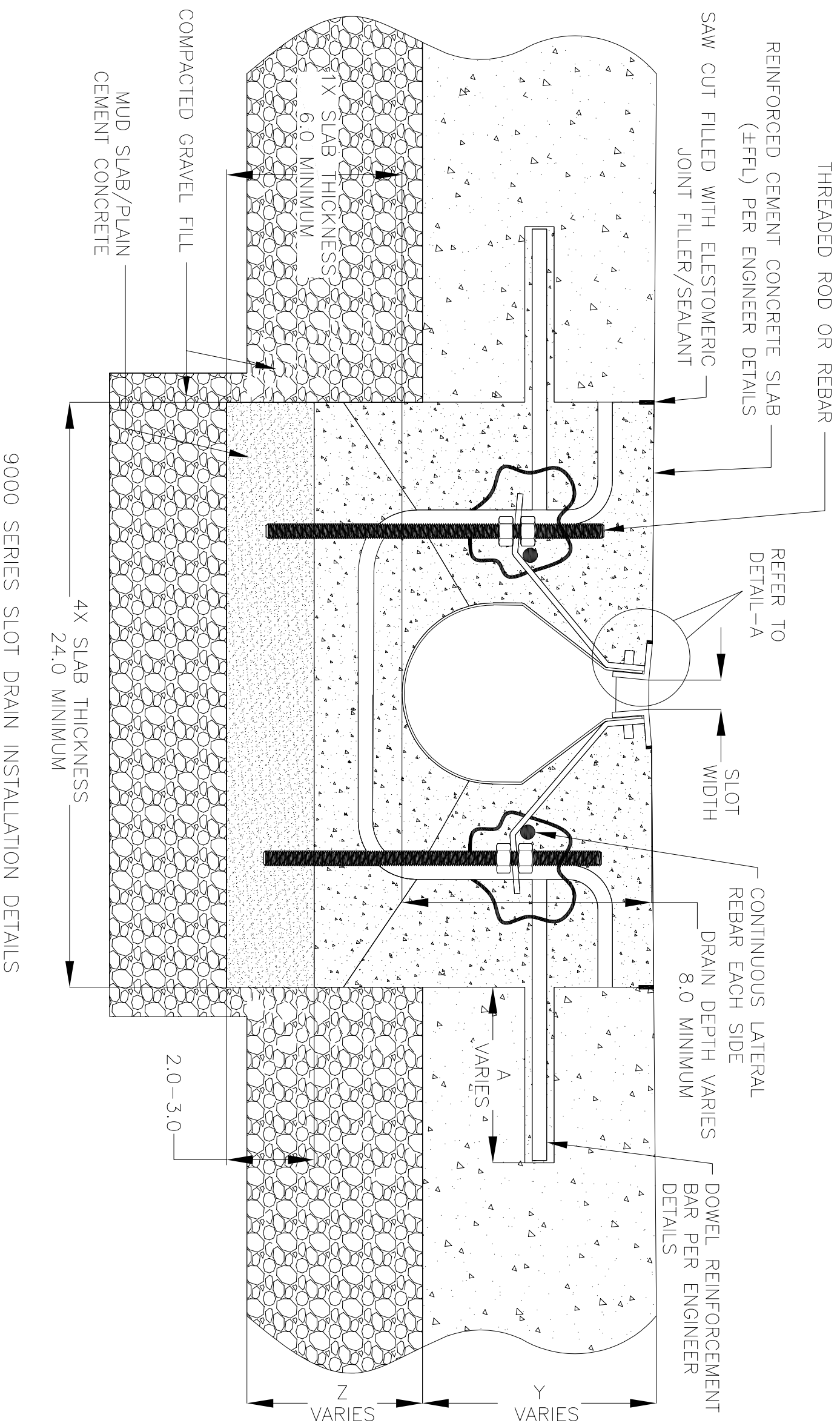
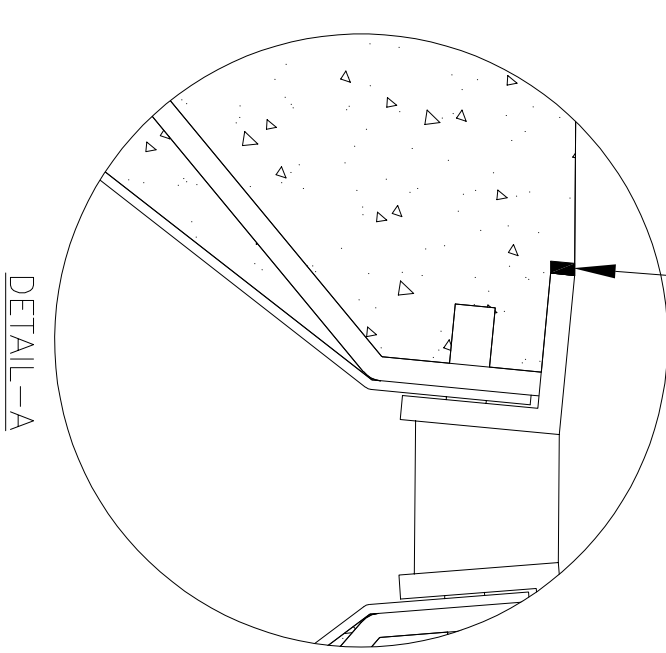
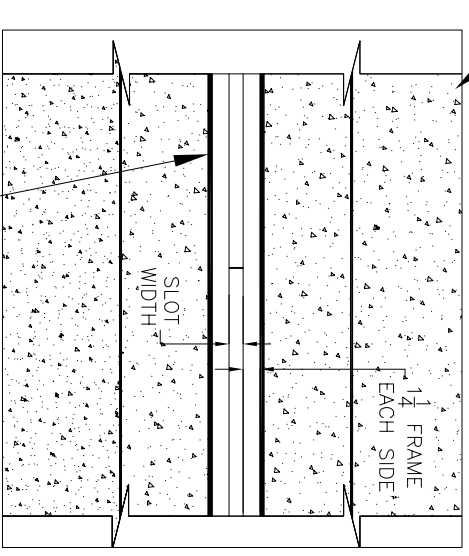


NOTES: UNLESS OTHERWISE SPECIFIED

1. ALL DIMENSIONS ARE IN INCHES.
2. DRAIN BODY MATERIAL: 14GA STAINLESS STEEL T304/T316
3. SPECIFYING ENGINEER IS RESPONSIBLE FOR CONCRETE ENCASUREMENT AND REINFORCING BASED UPON APPLICATION AND LOCAL CODES.
4. REFER TO <https://info.slotdrainsystems.com/installresources> FOR INSTALLATION INSTRUCTIONS.



REINFORCED CEMENT CONCRETE SLAB (±FFL) PER ENGINEER DETAILS



9000 SERIES SLOT DRAIN INSTALLATION DETAILS

REVISIONS			
REV	DESCRIPTION	DATE	BY
0	INITIAL RELEASE - RO	12/2/2019	DK
1	UPDATED DRAIN LAYOUT	12/2/2020	DK
2	UPDATED THE REBAR DETAILS	7/13/2021	DK

855.497.7508
info@slotdrainsystems.com
www.slotdrainsystems.com

DRAWING TITLE		DRAWING NO.	
CONCRETE FLOOR-RETROFIT INSTALLATION		IN-SD9000-101-R2	
DRAIN SERIES		SIZE	SCALE
9000 SERIES SLOT DRAIN		B	NTS
REV.		SHEET	
2		1 OF 1	

ALL DRAWINGS ARE THE EXCLUSIVE PROPERTY OF SLOT DRAIN SYSTEMS. ANY REPRODUCTION IN PART OR IN WHOLE IS PROHIBITED WITHOUT PROPER CONSENT.