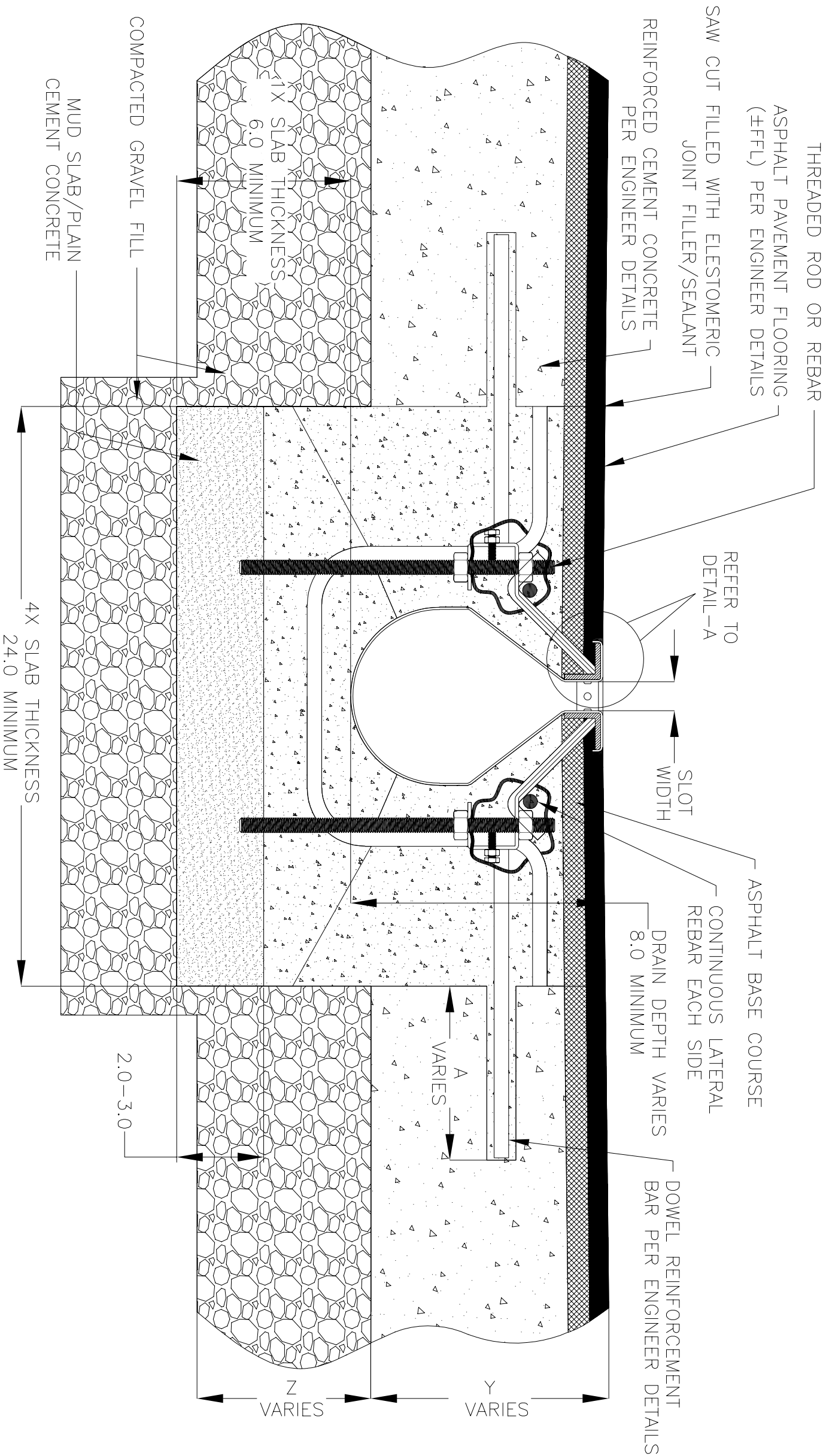


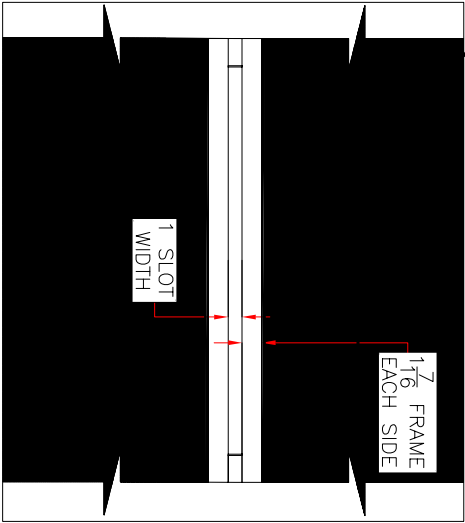
NOTES: UNLESS OTHERWISE SPECIFIED

1. ALL DIMENSIONS ARE IN INCHES.
2. DRAIN BODY MATERIAL: 14GA STAINLESS STEEL T304/T316
3. SPECIFYING ENGINEER IS RESPONSIBLE FOR CONCRETE ENCASEMENT AND REINFORCING BASED UPON APPLICATION AND LOCAL CODES.
4. REFER TO <https://info.slotdrainsystems.com/installresources> FOR INSTALLATION INSTRUCTIONS.

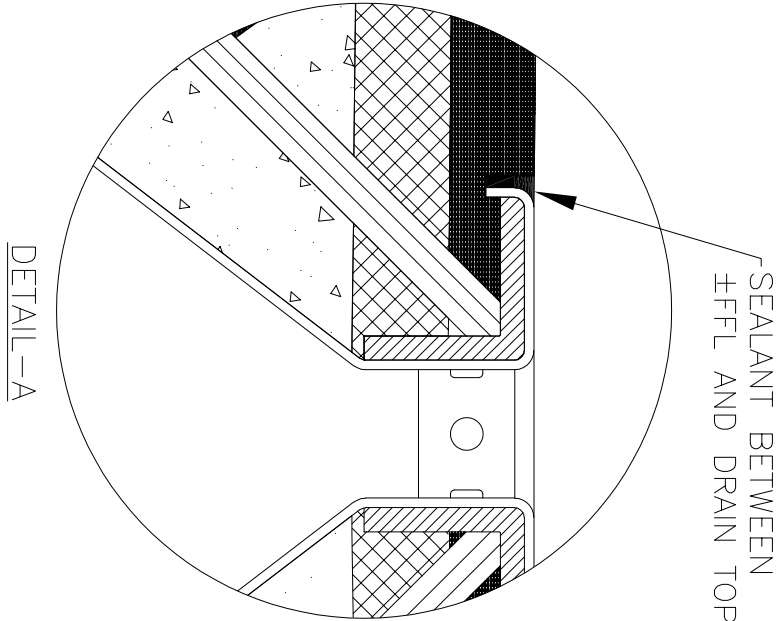


10000 SERIES SLOT DRAIN INSTALLATION DETAILS

ASPHALT FLOORING (±FFL)
PER ENGINEER DETAILS



PLAN VIEW



| REVISIONS | | | |
|-----------|-----------------------------|-----------|----|
| REV | DESCRIPTION | DATE | BY |
| 0 | INITIAL RELEASE – R0 | 12/2/2019 | DK |
| 1 | UPDATED DRAIN LAYOUT | 12/2/2020 | DK |
| 2 | REMOVED THE CONCRETE REBARS | 7/13/2021 | DK |

SLOT DRAIN[®]
SYSTEMS

855.497.7508
info@slotdrainsystems.com
www.slotdrainsystems.com

| DRAWING TITLE | | | |
|-------------------------------------|------|-------|--------|
| ASPHALT FLOOR-RETROFIT INSTALLATION | | | |
| DRAIN SERIES | | | REV. |
| 10000 SERIES SLOT DRAIN | | | 2 |
| DWG NO. | SIZE | SCALE | SHEET |
| IN-SD10000-102-R2 | B | NTS | 1 OF 1 |

ALL DRAWINGS ARE THE EXCLUSIVE PROPERTY OF SLOT DRAIN SYSTEMS. ANY REPRODUCTION IN PART OR IN WHOLE IS PROHIBITED WITHOUT PROPER CONSENT.