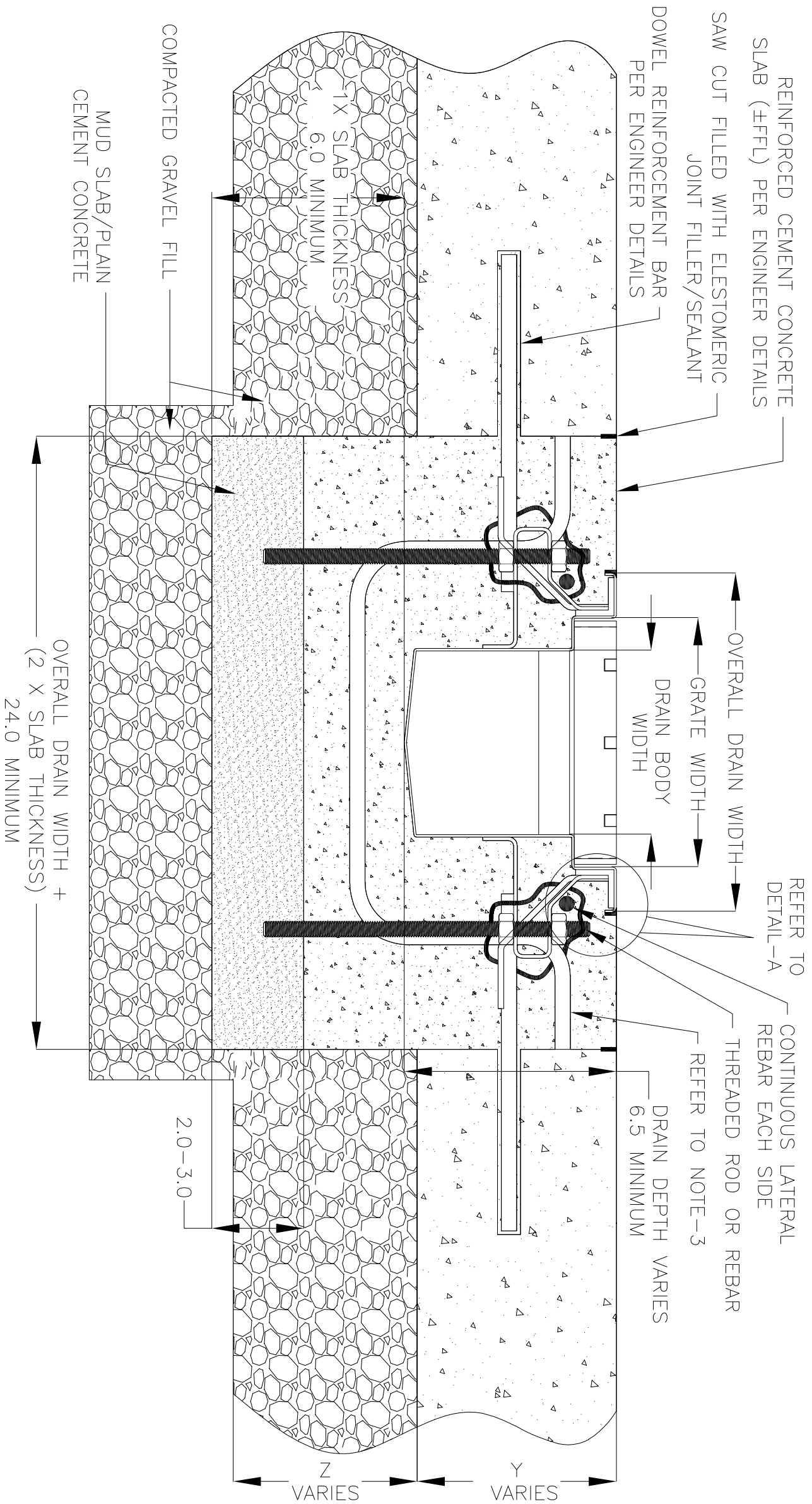
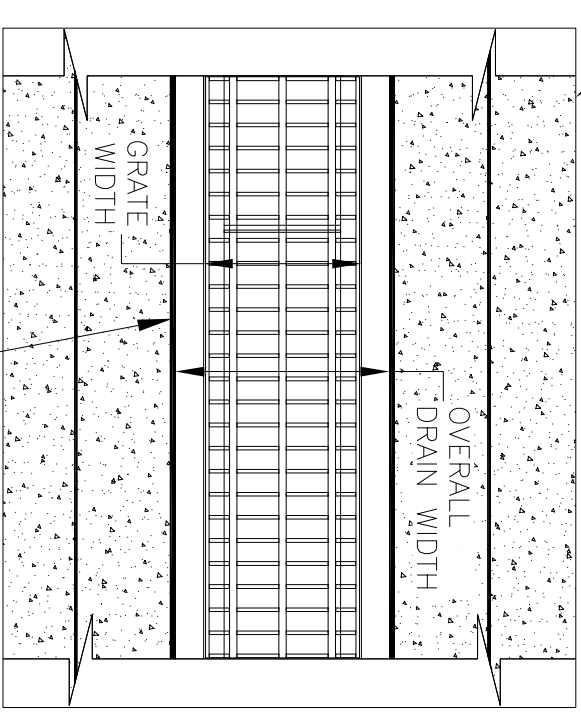


NOTES: UNLESS OTHERWISE SPECIFIED

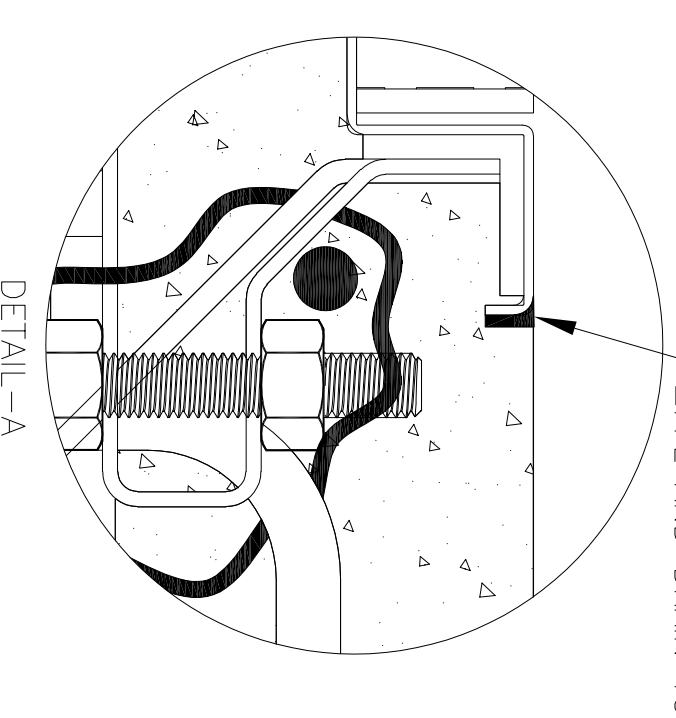
1. ALL DIMENSIONS ARE IN INCHES.
2. DRAIN BODY MATERIAL: 14GA STAINLESS STEEL T304/T316
3. GRATING: PLAN/SERRATED BAR GRATING, UPTO 'E' LOAD CLASS AVAILABLE.
4. SPECIFYING ENGINEER IS RESPONSIBLE FOR CONCRETE ENCASMENT AND REINFORCING BASED UPON APPLICATION AND LOCAL CODES.
5. REFER TO <https://info.slotdrainsystems.com/installresources> FOR INSTALLATION INSTRUCTIONS.



REINFORCED CEMENT CONCRETE SLAB (FFFL) PER ENGINEER DETAILS



PLAN VIEW



DETAIL-A

FOOD SAFE 'V' BOTTOM TRENCH DRAIN INSTALLATION DETAILS

REVISIONS

REV	DESCRIPTION	DATE	BY
0	INITIAL RELEASE - R0	2/3/2020	DK
1	UPDATED DRAIN LAYOUT & REBAR DETAILS	9/14/2021	DK

SLOT DRAIN SYSTEMS
 855.497.7508
 info@slotdrainsystems.com
 www.slotdrainsystems.com

DRAWING TITLE				CONCRETE FLOOR-RETROFIT INSTALLATION			
DRAIN SERIES				FOOD SAFE 'V' BOTTOM TRENCH DRAIN			
DWG NO.	SIZE	SCALE	SHEET	DWG NO.	SIZE	SCALE	SHEET
IN-FTV-102-R1	B	NTS	1 OF 1	IN-FTV-102-R1	B	NTS	1 OF 1

ALL DRAWINGS ARE THE EXCLUSIVE PROPERTY OF SLOT DRAIN SYSTEMS. ANY REPRODUCTION IN PART OR IN WHOLE IS PROHIBITED WITHOUT PROPER CONSENT.