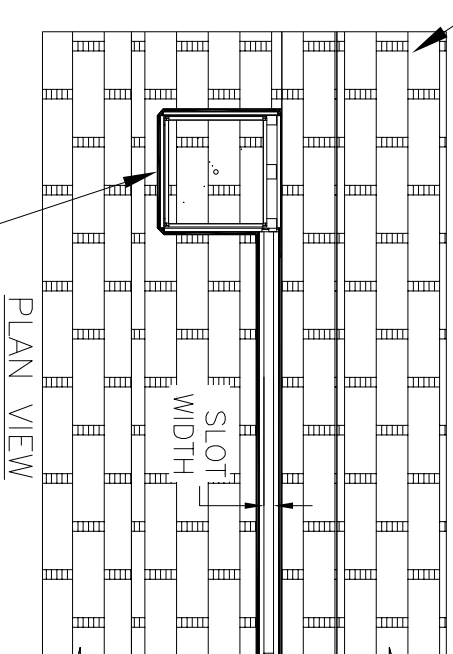
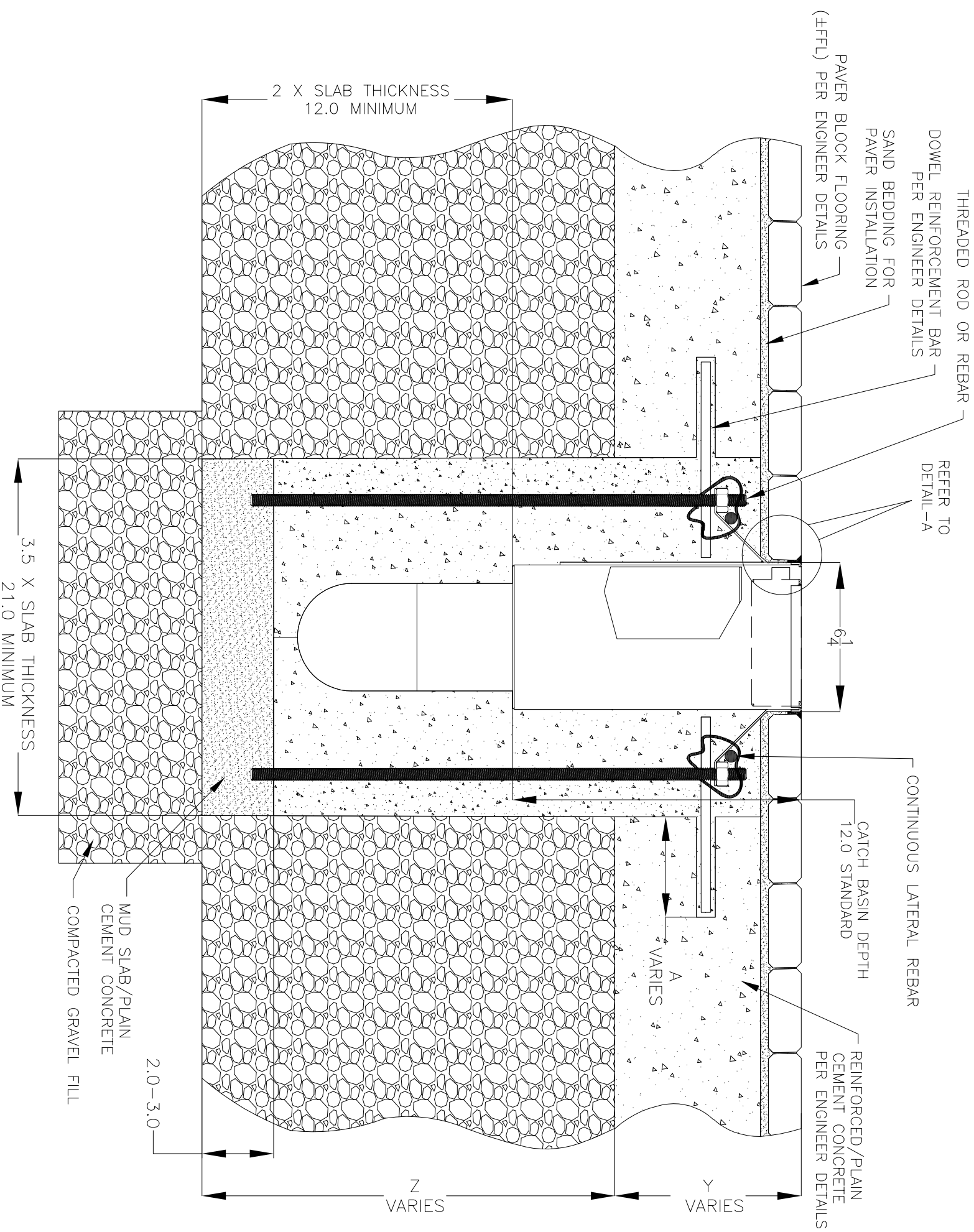


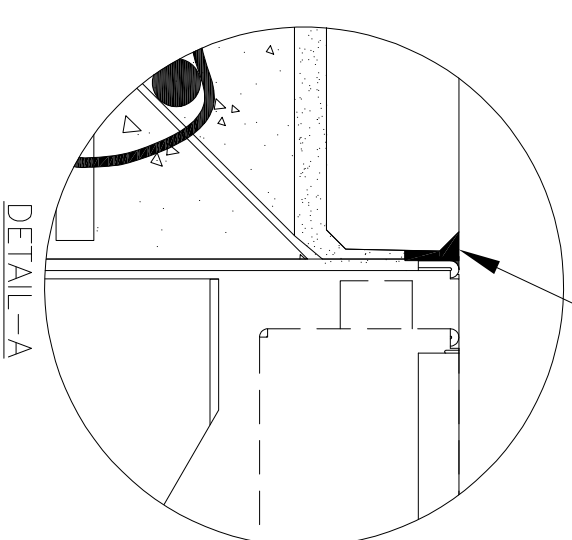
NOTES: UNLESS OTHERWISE SPECIFIED

1. ALL DIMENSIONS ARE IN INCHES.
2. CATCH BASIN BODY MATERIAL: 14GA STAINLESS STEEL T304/T316
3. SPECIFYING ENGINEER IS RESPONSIBLE FOR CONCRETE ENCASEMENT AND REINFORCING BASED UPON APPLICATION AND LOCAL CODES.
4. REFER TO <https://info.slotdrainsystems.com/installresources> FOR INSTALLATION INSTRUCTIONS.

PAVER BLOCK FLOORING
(±FFL) PER ENGINEER DETAILS



SEALANT BETWEEN ±FFL
AND CATCH BASIN TOP



DRAWING TITLE
PAVER BLOCK FLOOR-RETROFIT-FLOOR INSTALL

DRAIN SERIES
6X6X12 NON FG 4000 CATCH BASIN WITH PANLID

DWG NO. IN-4000-6X6X12PFPANLID-111-R1

SIZE B SCALE NTS SHEET 1 OF 1

6X6X12 NON FG 4000 CATCH BASIN INSTALLATION DETAILS

ALL DRAWINGS ARE THE EXCLUSIVE PROPERTY OF SLOT DRAIN SYSTEMS. ANY REPRODUCTION IN PART OR IN WHOLE IS PROHIBITED WITHOUT PROPER CONSENT.

REVISIONS		DATE	BY
REV	DESCRIPTION		
0	INITIAL RELEASE - R0	11/20/2019	DK
1	UPDATED DRAWING LAYOUT & REBAR DETAILS	7/14/2021	DK