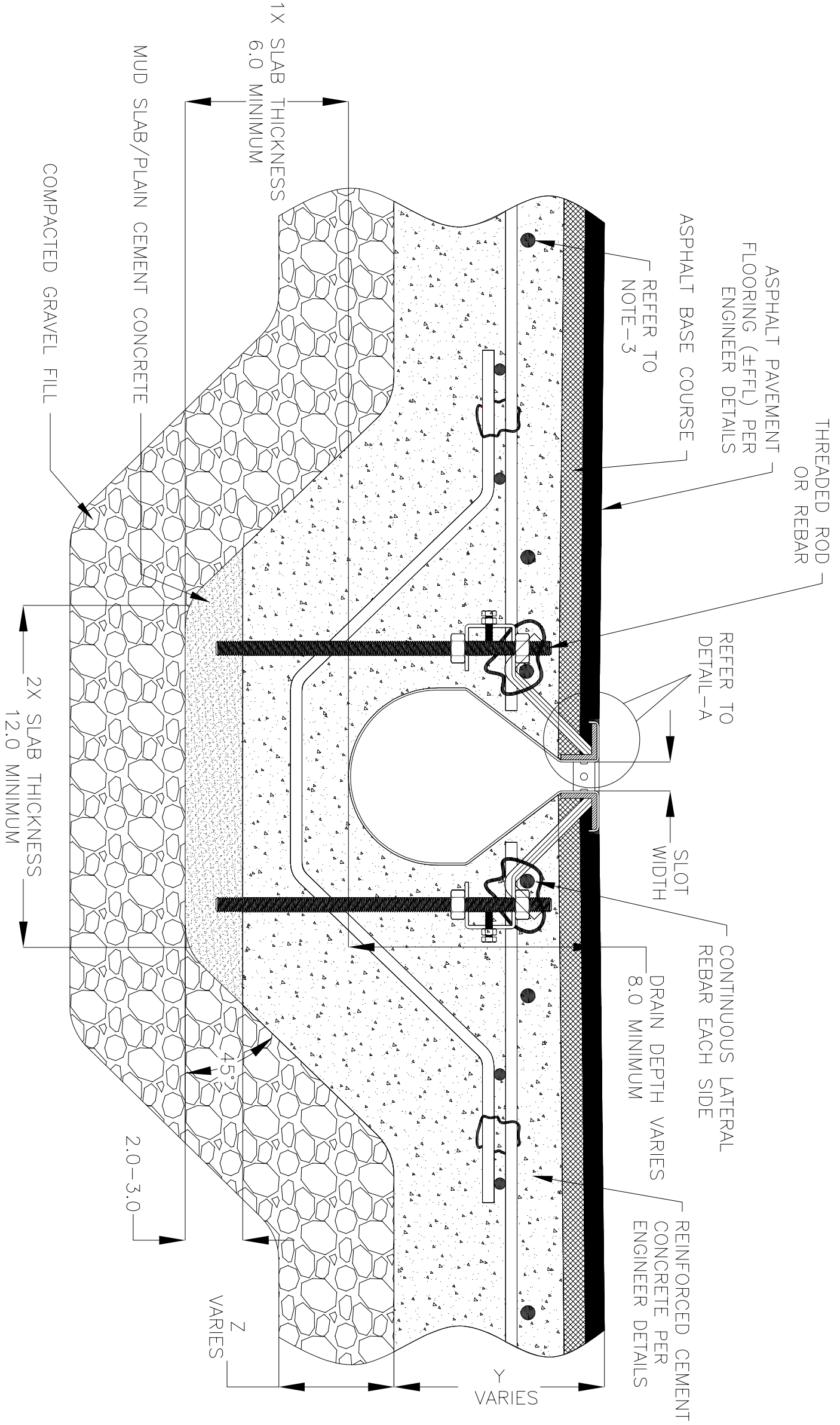


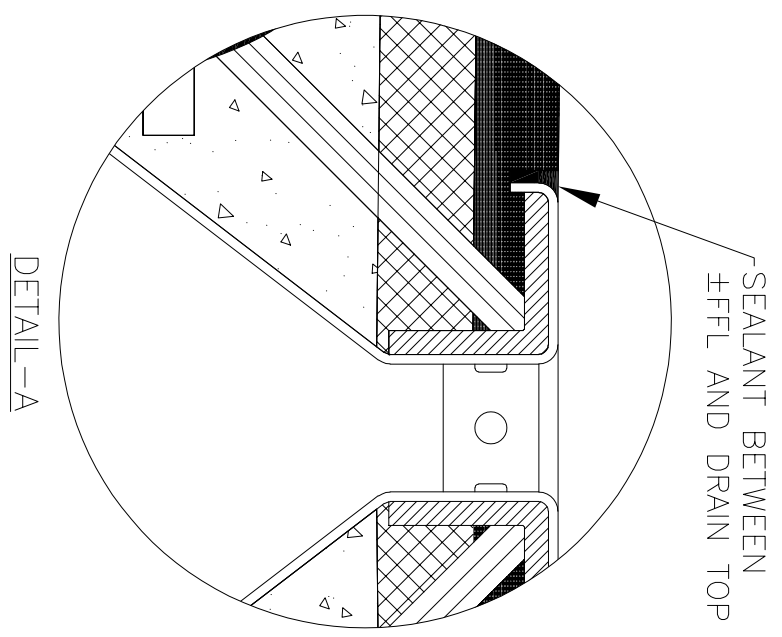
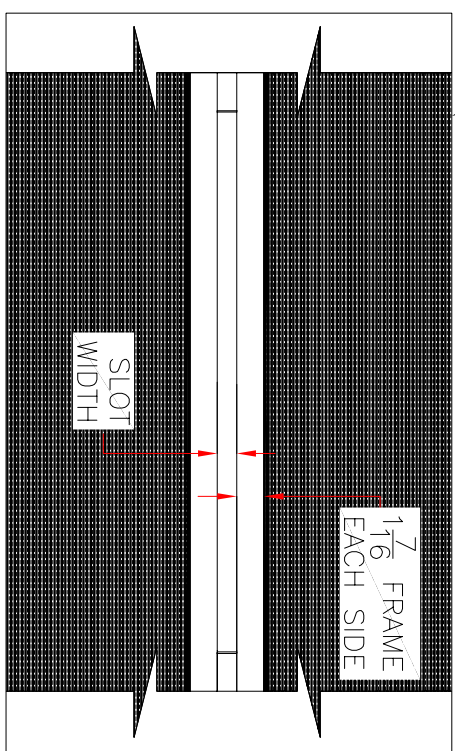
NOTES: UNLESS OTHERWISE SPECIFIED

1. ALL DIMENSIONS ARE IN INCHES.
2. DRAIN BODY MATERIAL: 14GA STAINLESS STEEL T304/T316
3. SPECIFYING ENGINEER IS RESPONSIBLE FOR CONCRETE ENCASUREMENT AND REINFORCING BASED UPON APPLICATION AND LOCAL CODES.
4. REFER TO <https://info.slotdrainsystems.com/installresources> FOR INSTALLATION INSTRUCTIONS.



ASPHALT PAVEMENT FLOORING (±FFL) PER ENGINEER DETAILS

REVISIONS		DATE	BY
REV	DESCRIPTION		
0	INITIAL RELEASE - R0	6/8/2019	DK
1	UPDATED DRAIN SECTIONS.	12/2/2019	DK
2	UPDATED DRAIN LAYOUT	12/2/2020	DK
3	UPDATED THE REBAR DETAILS	7/13/2021	DK



10000 SERIES SLOT DRAIN INSTALLATION DETAILS

ALL DRAWINGS ARE THE EXCLUSIVE PROPERTY OF SLOT DRAIN SYSTEMS. ANY REPRODUCTION IN PART OR IN WHOLE IS PROHIBITED WITHOUT PROPER CONSENT.

SLOT DRAIN SYSTEMS
 855.497.7508
 info@slotdrainsystems.com
 www.slotdrainsystems.com

DRAWING TITLE		REV.	
ASPHALT FLOOR-NEW CONSTRUCTION INSTALLATION		3	
DRAIN SERIES		10000 SERIES SLOT DRAIN	
DWG NO.	SIZE	SCALE	SHEET
IN-SD10000-002-R3	B	NTS	1 OF 1